

1 Preliminary Site Plan
1" = 10'-0"

ISS.	DATE	DESCRIPTION OF ISSUE	CHK
1	05/16/12	PRELIMINARY	
2	05/30/12	PROGRESS	

EMANUEL ENGINEERING, INC.
CIVIL AND STRUCTURAL CONSULTANTS
118 PORTSMOUTH AVE
STRATHAM, NH 03885
(603) 772-4400
(603) 772-4487

THE STRUCTURAL "PROFESSIONAL ENGINEER" STAMP AFFIXED TO THIS DRAWING DOES NOT COVER OTHER DISCIPLINES SUCH AS ARCHITECTURAL, MECHANICAL, ELECTRICAL, PLUMBING, LIFE SAFETY, ETC.

NH

Exeter Swim Association
Pool Enclosure
4 Hampton Road

Exeter

PREPARED FOR:

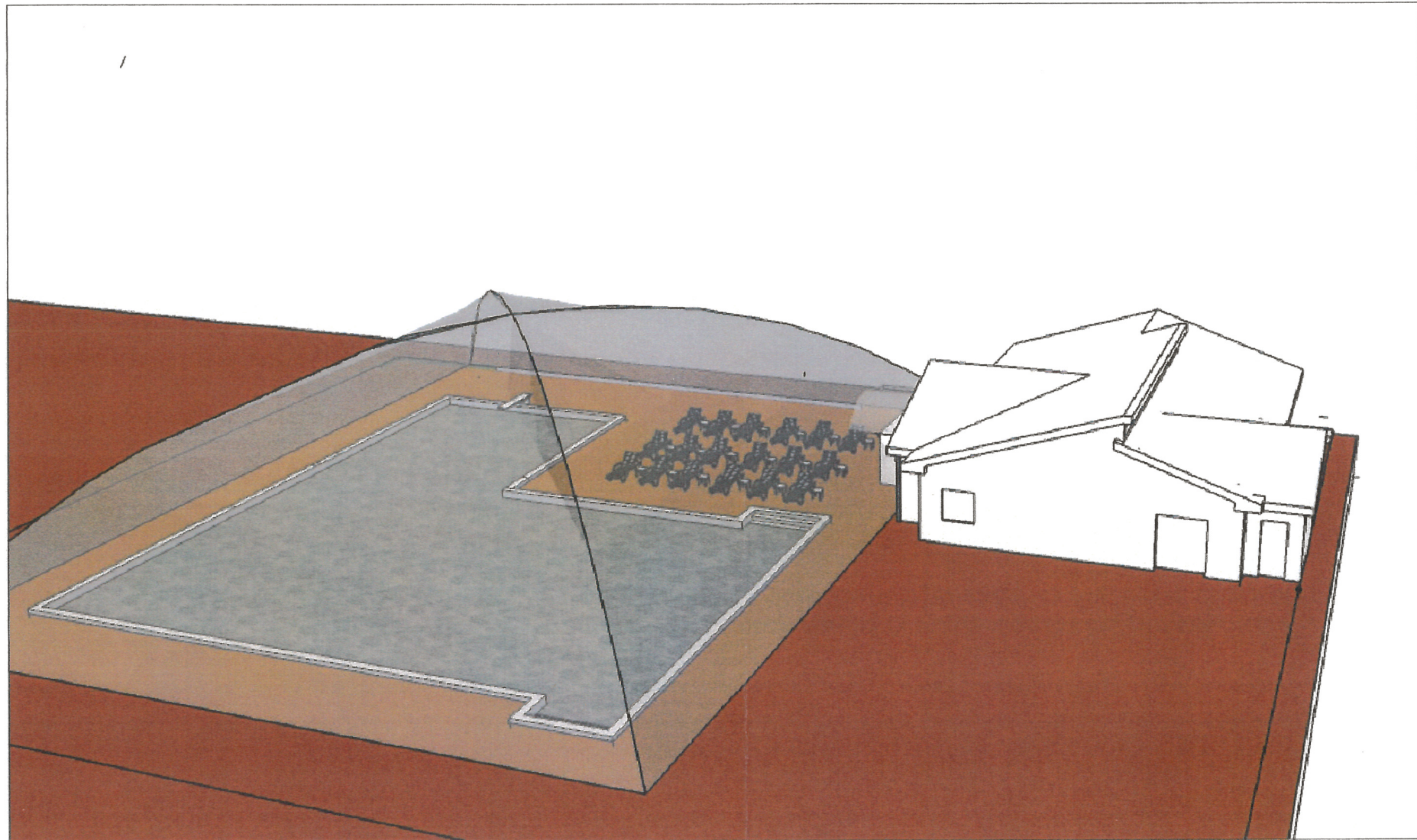
DESIGNED BY: APM
CHECKED BY: -
DRAFTED BY: RHG
CHECKED BY: APM
STAMP:


PROGRESS

Preliminary Site Plan

JOB #: 12-060
SCALE: AS NOTED
DWG: 1 OF 1

C1



 **EMANUEL
ENGINEERING, INC.**
CIVIL AND STRUCTURAL CONSULTANTS
118 PORTSMOUTH AVE.
STRATHAM, NH 03885
(p) 603.772.4400
(f) 603.772.4487

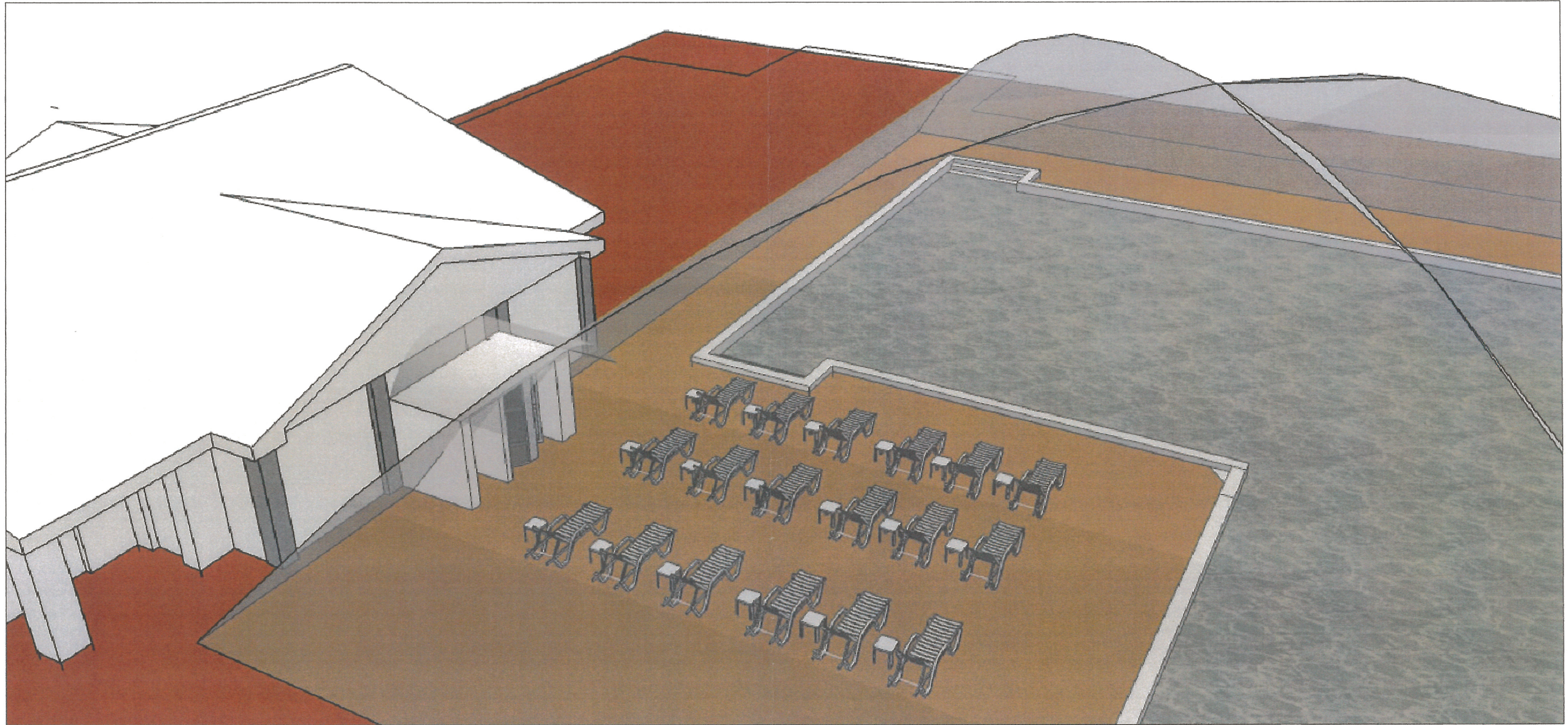



PO Box 766
Exeter, New Hampshire 03833
Tel.: 603.502.3472


Daniel R. Healy
Pool House Addition
Exeter, NH

June 1, 2012

 **THA ARCHITECTS, LLC**
ARCHITECTURE • PLANNING • CONSULTING • INTERIOR DESIGN
105 WILLOW BROOK AVENUE • STRATHAM, NEW HAMPSHIRE 03885
Tel: (603) 770-2491 • Fax: (603) 773-0238 • WWW.THAARC.COM
© 2012 THA Architects LLC




EMANUEL ENGINEERING, INC.
 CIVIL AND STRUCTURAL CONSULTANTS
 118 PORTSMOUTH AVE.
 STRATHAM, NH 03885
 (p) 603.772.4400
 (f) 603.772.4487


EXETER
 PO Box 766
 Exeter, New Hampshire 03833
 Tel.: 603.502.3472

Daniel R. Healy
Pool House Addition
 Exeter, NH
 June 1, 2012


THA ARCHITECTS, LLC
 ARCHITECTURE ■ PLANNING ■ CONSULTING ■ INTERIOR DESIGN
 105 WILLOW BROOK AVENUE ■ STRATHAM, NEW HAMPSHIRE 03885
 Tel: (603) 770-2491 ■ Fax: (603) 773-0238 ■ WWW.THAARC.COM
 © 2012 THA Architects LLC