



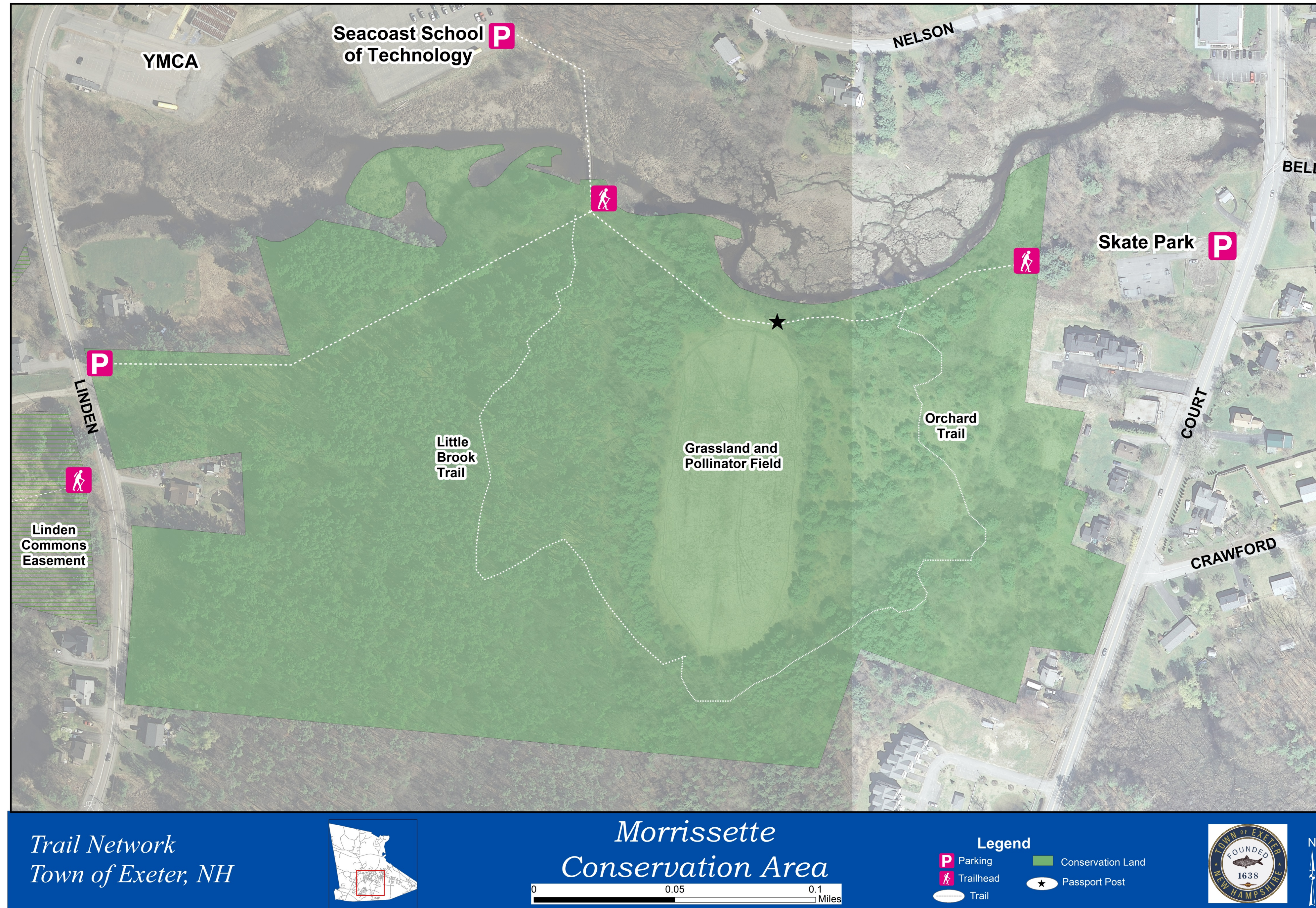
MORRISSETTE CONSERVATION AREA

NATURAL RESOURCES

The Morrissette Property is comprised of a 36 acre parcel with a small trail system connecting Linden Street to Court Street on the south side of the Little River. A small bridge north of the property over the Little River also connects this land to the YMCA, Seacoast School of Technology, and the Great Bay Charter School, providing opportunities for hands on learning experiences.

This property protects a unique combination of woodlands, shrubs, riparian river corridor and an open grassy field, supporting a wide variety of species for food, cover and breeding -- all within a short walk from downtown. In order to keep the fields open, the Conservation Commission conducts late season mowing of the land. This allows time for birds to nest and their young to disperse and allows bees and butterflies to feed off the wildflowers and allows those flowers to spread their seed before winter. Protecting a vegetated buffer along the shoreline of the Little River is also an essential component to keeping the river healthy.

Grassland and shrublands are declining habitats in the northeast. Preservation of these areas through land conservation affords long term protection for important wildlife such as the ruffed grouse, and the American woodcock whose mating flight is a welcomed sight each spring.



ACQUISITION AND HISTORY

The Morrissette Property was donated to the Town by the Exeter School District to offset impacts from the High School construction. When owned by the school, the footbridge provided access to the large open field which was formerly the football.

Prior to the school's ownership, this land was owned by Joseph and Lillian Morrissette who farmed the land. The remnants of their apple orchard are signs of its farming history. Today these apple trees are managed to provide food for deer, turkey and other wildlife.

ACTIVITIES

The property may be enjoyed by the public for passive recreation including hiking and bird watching. Wheeled and motorized vehicles, camping and fires are prohibited. In the winter, cross-country skiing and snowshoeing enable year-round exploration of the area.

In addition, this property is included in the Conservation Commission's Trail Passport Program--a fun way for families to explore a small portion of Exeter's Conservation Lands. Passport Books and more information are available on the Town's webpage

Visitors can travel between Linden Street, the Skate park on Court Street, and continue across the street to Gilman Park and the Phillips Exeter Sports Complex.

Please be aware that the tall grass is prime habitat for ticks. Dogs are welcome but must be leashed and cleaned up after.



Photo circa 1950s courtesy of the Morrissette Family

USE LIMITATIONS:

