

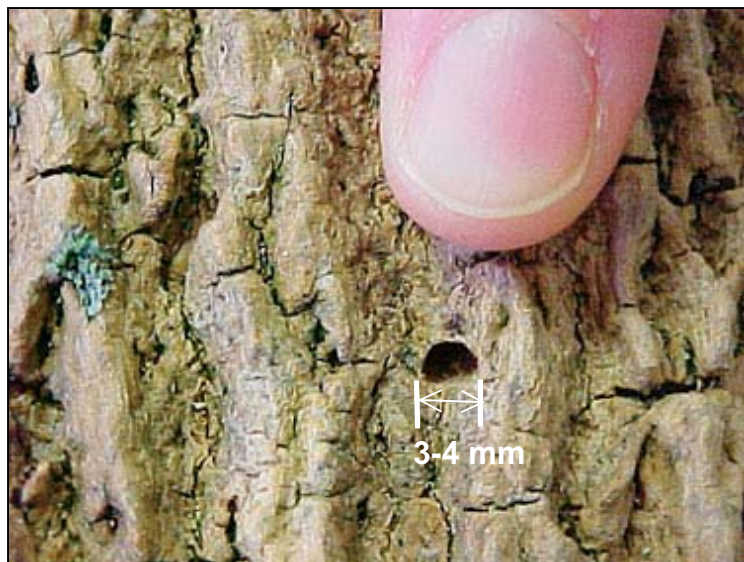
Emerald Ash Borer Field Guide



EAB larvae
Agrilus planipennis



EAB gallery
and exit hole
(1/18 inch)



Signs of EAB attack in bark
1/18 inch exit hole



EAB adult
(1/2 inch) and
gallery
Look for adults –
May through July





D-shaped exit holes, 1/18 inch



Look closely for the
d-shaped exit hole,
1/18 inch



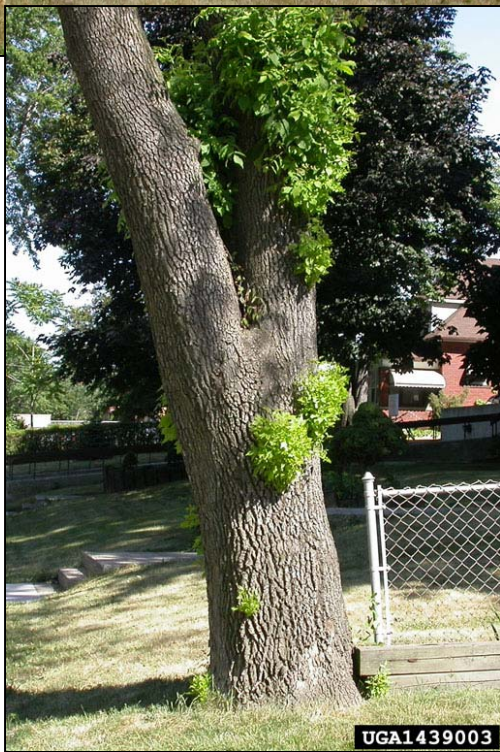
Canker formed from EAB infestation.
Note WINDING galleries



Typical crack at
infested region of
bole



Epicormic branching
associated with
infested tree



Sprouts beneath
infested area of bole



Dying branches possibly associated with infested ash



Possible early symptoms of EAB attack



Possible EAB symptoms -later stage of infestation



Woodpeckers may be a sign of EAB
or other borer or bark beetle
infestation

Ash leaves, compound and opposite



Healthy ash trees

