



TOWN OF EXETER, NEW HAMPSHIRE

10 FRONT STREET • EXETER, NH • 03833-3792 • (603) 778-0591 • FAX 772-4709

www.exeternh.gov

PUBLIC NOTICE EXETER CONSERVATION COMMISSION

Monthly Meeting

The Exeter Conservation Commission will meet in the Nowak Room, Exeter Town Offices at 10 Front Street, Exeter on **Tuesday, January 9th, 2018 at 7:00 P.M.**

Call to Order:

1. Introduction of Members Present
2. Public Comment

Action Items

1. Event Request: Snowshoe Hullabaloo (Ri Fahnestock, Sarah Sallade)
2. Committee Reports
 - a. Trails
 - i. Summer Trail – Fest Planning Sub Group
 - b. Property Management
 - i. Seedling Plantings
 - ii. Harvest Path and Opening/Invasive Baseline Map
 - iii. PEA Climate Action Day Activity Request (4/27)
 - iv. Draft CC Submission for Town Report
 - c. Outreach
 - i. Winter Outreach
 1. Full Moon Snowshoe
 2. Raynes Open Barn
 - d. CC Representatives Report on Other Committees
3. Approval of Minutes: December 5th Meeting
4. Correspondence and Other Business:
 - a. NHACC Survey
 - b. Request for Action on Off Leash Dogs
 - c. Request for Position on Use of Motorized Winter Trail Groomer in Henderson Swasey and Oaklands
5. Next Meeting: Date Scheduled (2/13/18), Submission Deadline (2/2/18)

Non Public Session

Non public session pursuant to RSA 91-A:3, II (d) for the consideration of the acquisition, sale, or lease of real or personal property

Bill Campbell, Chair

Exeter Conservation Commission

January 5th, 2018 Exeter Town Office, Exeter Public Library, and Town Departments.

T N F E T E
PLANN N EPA TMENT MEM AN M

Date: January 5, 2018
To: Conservation Commission Board Members
From: Kristen Murphy, Natural Resource Planner
Subject: January 9th Conservation Commission Meeting

1. Snowshoe Hullabaloo, Henderson Swasey Town Forest

Packet includes event application. Race course has not been modified from previous years with the exception of the C3i re-route portion which we do not have updated maps for.

Proposed Motion:

- *I move to*
 - APPROVE*
 - APPROVE WITH THE FOLLOWING CONDITIONS*
 - DENY FOR THE FOLLOWING REASONS**the use application for the February 24th Snowshoe Hullabaloo, as presented.*

2. Trail Fest Planning Subcommittee

Ri and Sarah have requested a meeting to discuss an approach for the 10th year anniversary of their event hosting in Exeter. Bill suggested we ID a subset of members from the Commission to participate in this discussion and set a date.

3. Seedling Order

Bill has suggested the Conservation Commission consider the purchase of seedling from the catalog in your packet for planting at the Henderson Swasey Town Forest Landing. If interested, the Commission needs a decision on what seedling category to purchase, the location of the planting (edges/throughout landing, etc). Additional cost may be associated with soil and a deer/rabbit cage for each seedling but we do not yet know those amounts. If supportive we will look into those costs.

Proposed Motion:

- *I move to*
 - APPROVE THE EXPENDITURE OF \$ [30] FROM THE CONSERVATION LAND MANAGEMENT BUDGET**For the purchase of ____ [category] ____ seedlings for planting ____ [location] ____.*

4. Harvest Path and Opening/Invasive Baseline Map

In July the Conservation Commission approved a contract with Charlie Moreno to map the harvest paths, wildlife openings, and document the presence of invasive plants in those openings in Henderson Swasey. Attached is his data for your use in management of these areas.

5. PEA Climate Action Day Activity Request (4/27)

Bill received a request for another project with PEA's Climate Action Day. He is looking for project ideas .

6. 2017 Annual Report

Attached is a draft copy of the annual report submission. Please review and provide comments by the end of the week.

7. Winter Outreach: Full Moon Snowshoe and Raynes Open Barn

The Commission should decide if they would like to host a full-moon snowshoe event in 2018. A possible alternative location that alleviates planning challenges of Raynes is the Morrissette property.

Full 1/31: possible dates 2/2 Fri (rise at 7:45 pm), 2/3 Sat (rise at 8:55)

Full 3/1: possible dates - 3/2 Fri (rise at 6:31 pm), 3/3 Sat (rise at 7:40) – note: Feb school vac

If support, ID a location, CC lead, members for assistance and select date.

Raynes Open Barn:

We could still highlight the Raynes property by hosting “open barn” for hot chocolate during the day monthly during the winter for a set # of hours. Given the hard cold, the Commission could request DPW support by plowing a larger parking area. People could arrive and play at their own leisure and return to the barn for hot cocoa. 3rd Saturday would allow for added announcement at CC meeting.

If support, ID a CC lead, frequency and hours, size of parking area desired, and members for assistance.

8. Correspondence

a. **NHACC Survey:** Your packet contains an NHACC survey form. Please review and consider some suggestions for the meeting. I will compile and submit to NHACC. This would be a good way to help us with our annual planning.

Suggested topics: outreach events, trail needs, conservation land management goals, etc.

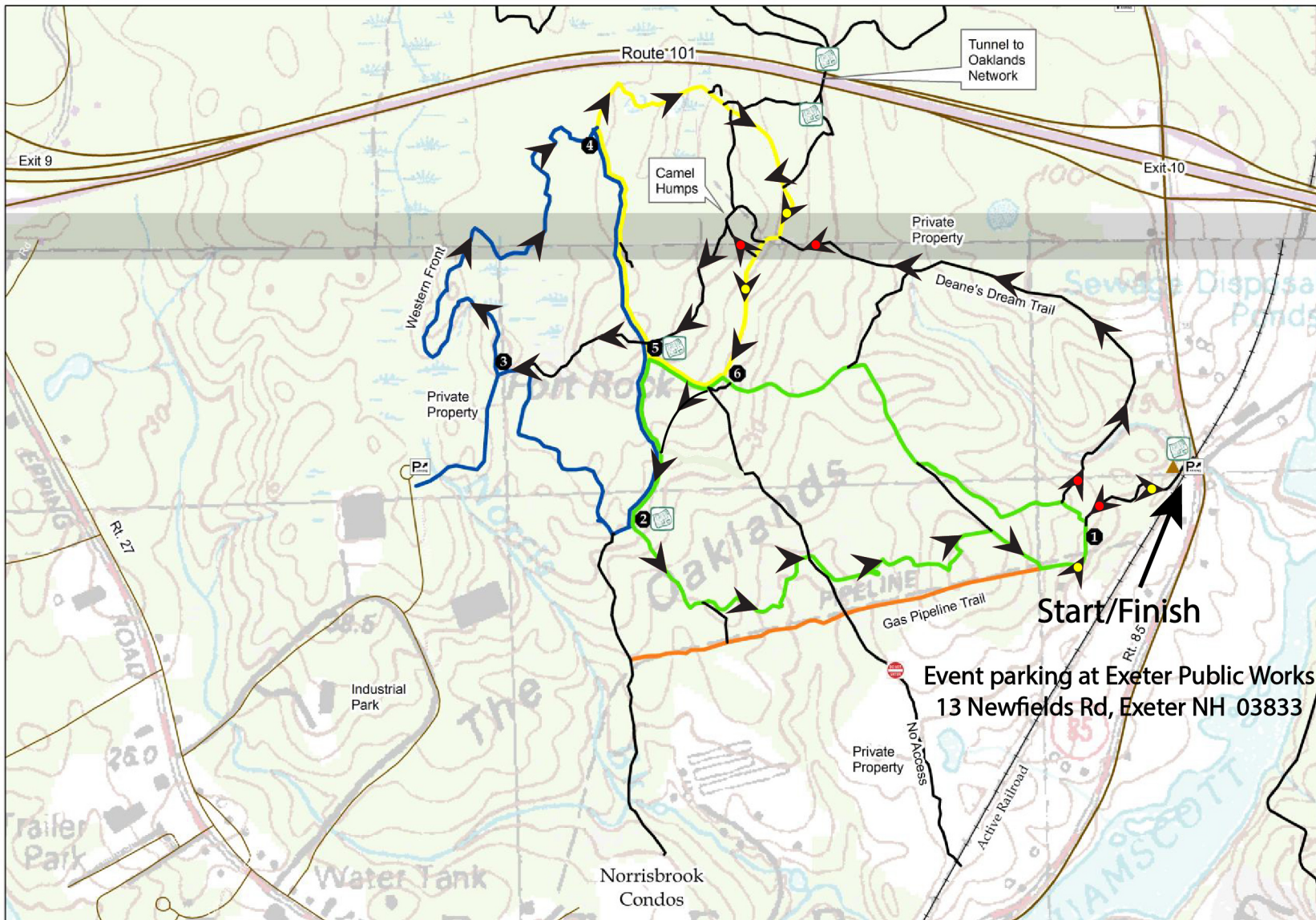
b. **Off-leash Dog Discussion:** David O’Hearn shared a [blog post](#) and [news article](#) on dog-related incident in Rye and requested the CC consider taking action on off leash dogs.

Suggested actions: Letter to the Editor, Memo to BOS if desired

c. **Winter Trail Grooming:** Bob Kelly reached out with interest in knowing the CC’s position on the use of trail grooming equipment in Henderson Swasey and Oaklands during the winter months. He and other trail users have discovered the small groomer pictured below that is currently being tested on trails in Atkinson and seem to be willing to purchase at their own expense. As this unit is still in development, it will likely not be ready for purchase until 2018 but given the level of interest, we thought having the Commission take a position on trail grooming would be important. My interpretation of the deed for the Henderson parcel seems to preclude this sort of activities but that may be a conservative approach. Other parcels allow the use of vehicles for trail maintenance. Both of these points should be considered. Some other points to consider (regardless of property) could include noise, exhaust, liability? and securing permissions from lands not entirely under CC control such as abutting easements and properties with interests held by others (HOAs, LCIP, LWCF).

Suggested actions: Review the portion of Henderson deed below, discuss whether this would be considered trail maintenance, and any other potential concerns. Take a position as to whether the Commission is

- Supportive
- not supportive,
- supportive with conditions _____,
- other



HENDERSON-SWASEY TRAIL NETWORK

This area is the result of donations by several generous individuals and has been set aside for conservation and recreation purposes. The parcels are managed by the Exeter Conservation Commission with the support of many dedicated volunteers.

Non-motorized activities including hiking, biking, skiing and snowshoeing allow for year-round enjoyment on established trails. Temporary closures may occur during very muddy or wet conditions. Closures will be posted at entrance kiosks and the Town of Exeter website.

Dogs are welcome but must be leashed and cleaned up after.

In accordance with Town Ordinances the following uses are not permitted:

- motorized vehicles
- horseback riding
- hunting

Please respect this land for the benefit of all users.

Report any misuse to the Town of Exeter at (603) 778-0591

— Green Loop (1.65 Miles)
— Blue Loop (1.75 Miles)
— Yellow Loop (0.98 Miles)
— Gas Pipeline (0.50 Miles)
— Additional Trails

P Map Locations — Local Roads
 Non Maintained Roads
 Trail Posts — State Roads
 End of Access — Railroad
 Kiosk — Private Property
 Parking — Parcel Lines
 Other towns
 Exeter

Legend

Trail Network
Town of Exeter, NH

Henderson - Swasey Network

Please note: Some trails cross onto private property. The landowners have allowed the use of the trails, but please respect their property.



Please visit our website at

www.nhnurseries.com

to see sample pictures of these and other species
in this catalog.

SPECIALTY PACKAGES

Our specialty packages consist of 25 assorted seedlings (5 each of 5 different species) color coded for easy identification. Each seedling will average 6 to 12" tall. Each package is a 2' x 3' poly-lined Kraft paper bag and will easily fit in the trunk of a small car. Flowering shrubs and trees will flower and produce fruit most abundantly when grown in full sunlight. **NOTE:** Occasionally we may need to substitute a species within a packet due to crop failure, winter damage or other circumstances beyond our control.

DOGWOOD PACKAGE - This package consists of 5 kinds of dogwood flowering shrubs native to NH. All are important to songbirds, providing nesting cover in spring and food sources from summer to fall. The package contains alternate-leaf dogwood, gray dogwood, red-osier dogwood, silky dogwood and yellow-osier dogwood. **Price-\$30 per pkg.**

NATIVE SPECIES PACKAGE - This package contains plants that are native to NH (present when European settlers arrived in the early 1600's). These species will grow on average to dry soils. The package contains native grapes, hazelnut, gray dogwood, Virginia rose and bayberry. **Price-\$30 per pkg.**

SONGBIRD/WILDLIFE PACKAGE - This package includes plants that provide seeds and berries that attract birds and other wildlife, whether summer visitors or year-round residents. A valuable source of natural food. The package contains American hazelnut, beach plum, elderberry, American cranberry, and Juneberry. **Price-\$30 per pkg.**

WETLANDS PACKAGE - These shrub species grow well in wetlands and saturated soils, including pond edges and stream banks. They will tolerate surface water during part of the growing season. The package contains winterberry holly, buttonbush, arrowwood, wetlands rose, and pussy willow. **Price-\$30 per pkg.**

DECIDUOUS TREE PACKAGE - These trees lose their leaves every fall. The seeds, nuts, or berries they produce are an important food source for a variety of birds and animals. This package contains black walnut, sugar maple, red oak, silver maple, and white oak. **Price-\$30 per pkg.**

CHRISTMAS TREE SAMPLER PACKAGE - This package allows one to test small quantities of different species to see which trees will grow best on a selected site. Conifer trees provide cover, nesting habitat, and food for a variety of songbirds and wildlife. This package contains 5 each of the following popular trees: balsam fir, Fraser fir, concolor fir, blue spruce and white spruce. **Price-\$30 per pkg. Maximum Order 5 Packages.**

SCREEN WINDBREAK PACKAGE - These conifers are great for providing a windbreak or screen, as well as nesting habitat and food for birds and animals. 5 each of red cedar, Norway spruce, white spruce, northern white cedar, and scotch pine will provide visual variety to a screen or windbreak. Plant 8-10 ft. apart. **Price-\$30 per pkg.**

NON NATIVE CONSERVATION SEEDLINGS

Disclaimer: These plants are primarily intended for wildlife and songbird use. Some species may contain toxins harmful to humans if consumed.

The following are 1 or 2-year old seedlings unless otherwise noted.
Heights are at least 6 to 12", and are available for the following prices:

Age	Size	Per 10	Per 25	Per 100
1-2 yr.	6-12"	\$15	\$25	\$80

CRABAPPLE, *Malus spp.* - Plant at least 10-15' apart; Fruit: abundant fruit usually persistent through winter. Wildlife value: used by numerous songbirds, game birds and mammals; a small tree. Mature height: 10-25'.

CRANBERRY, EUROPEAN Highbush, *Viburnum opulus* - Grows in wet to well-drained soils; spacing for hedgerows 4' apart, singular spacing 10' apart. Flowers/fruit: abundant red berries retained through the winter, eaten by grouse, turkey, deer and numerous songbirds. Plants browsed by deer, rabbits, mice. Mature height: 12-15'.

Crabapple





Moreno Forestry Associates
Skid Trails and Openings from 2016 Harvest
Henderson Swazey Town Forest
Exeter, NH
Map Drawn 12/22/2017

NH Rte 101

Newfields Rd

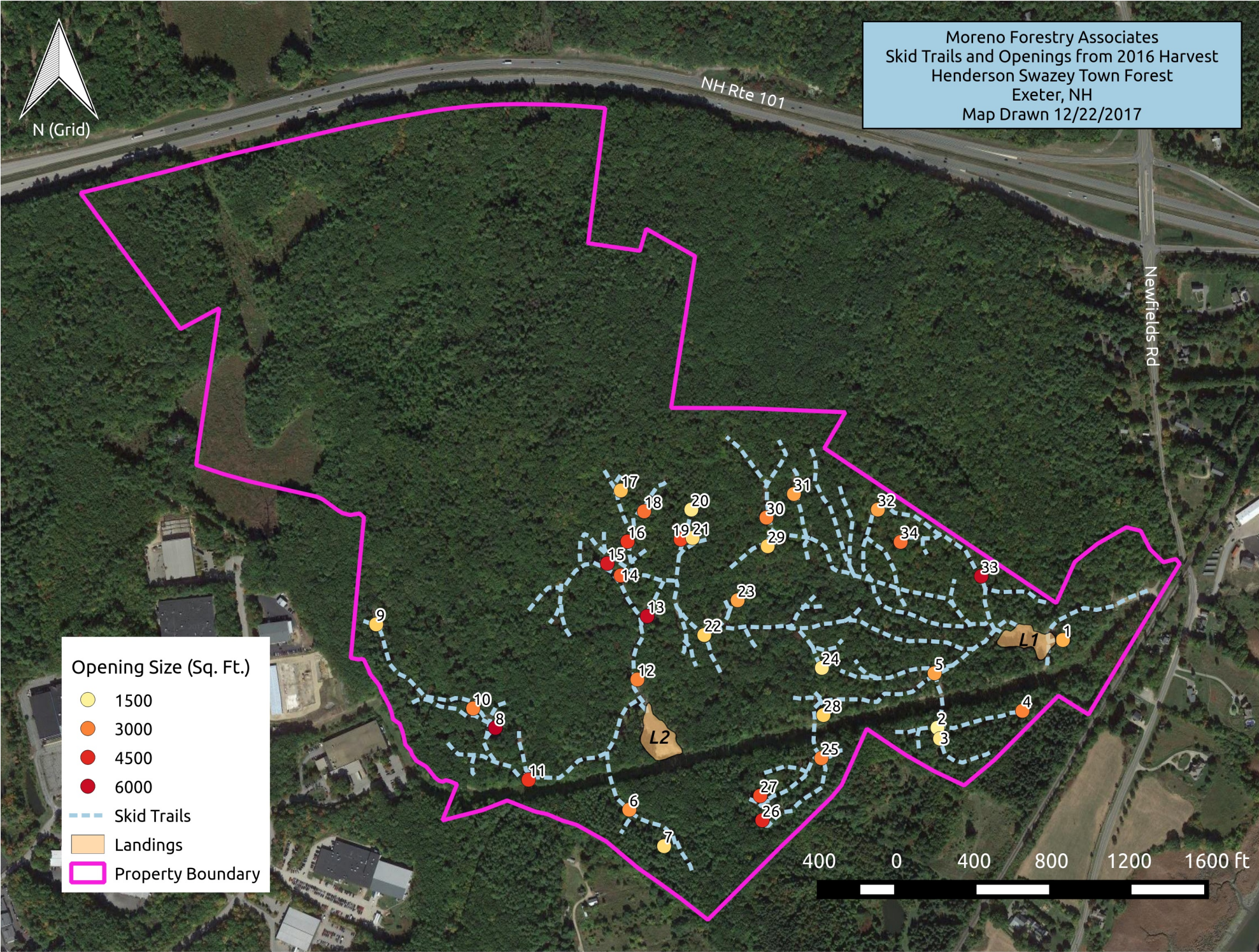
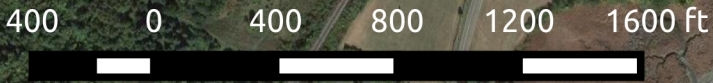
Opening Size (Sq. Ft.)

- 1500
- 3000
- 4500
- 6000

Skid Trails

Landings

Property Boundary



Regen opening #	Dimensions (ft.; approx.)	Area (sq. ft.; approx.)	Approx. configuration / orientation	Native regeneration	Invasives present	Notes			
1	90 x 25	2250	Ovoid; E-W	RM, GB	BB, MR	Skinny			
2	50 x 30	1500	Ovoid; n/a	Rubus	BB, MR				
3	40 x 40	1600	Circular; n/a	Rubus	BB, MR				
4	50 x 60	3000	Ovoid; n/a	RM, WA	GLB, BB				
5	40 x 60	2400	Shield; NE-SW	AB, RM, Rubus					
6	70 x 40	2800	Ovoid; NE-SW	ASP, RM, Rubus	BB				
7	70 x 25	1750	Ovoid; NE-SW	AB, RM, Rubus	BB	Skinny			
8	80 x 80	6400	Circular; n/a	AB, Rubus, PB, BC, SB, RO					
9	50 x 40	2000	Ovoid; n/a	SB, Rubus, AB, WH					
10	60 x 50	3000	Ovoid; n/a	AB, SB, RM, Rubus					
11	60 x 60	3600	Circular; n/a	RM, SB, AB, Rubus					
12	50 x 60	3000	Ovoid; n/a	BC, SB, Rubus					
13	100 x 60	6000	Kidney; n/a	AB, SB, Rubus, RO					
14	110 x 30	3300	Kidney; NW-SE	RM, SB, AB, Rubus					
15	110 x 50	5500	Ovoid; NW-SE	RM, SB, AB, Rubus					
16	60 x 60	3600	Circular; n/a	RM, SB, AB, Rubus					
17	70 x 30	2100	Ovoid; NW-SE	AB, SB, Rubus					
18	40 x 80	3200	Ovoid; NW-SE	AB, SB, Rubus					
19	70 x 50	3500	Ovoid; n/a	AB, RO, SB, Rubus					
20	40 x 40	1600	Circular; n/a	AB, SB					
21	60 x 30	1800	Ovoid; NE-SW	AB, RM, Rubus, SB					
22	40 x 50	2000	Circular; n/a	SB, RM, Rubus		Skid road intersection			
23	60 x 40	2400	Ovoid; E-W	AB, SB, RM					
24	40 x 40	1600	Circular; n/a	AB, SB, RM					
25	50 x 60	3000	Circular; n/a	RM, RO					
26	150 x 30	4500	Kidney; E-W	AB, ASP, Rubus					
27	70 x 50	3500	Ovoid; NW-SE	AB, Rubus					
28	45 x 45	2025	Circular; n/a	(minimal)					
29	50 x 40	2000	Ovoid; E-W	RM, AB					
30	50 x 60	3000	Ovoid; N-S	RM, AB, SB					
31	60 x 40	2400	Kidney; E-W	AB, RO					
32	80 x 30	2400	Ovoid; E-W	PB, AB, RO	GLB				
33	100 x 60	6000	Kidney; N-S	AB, RM, SB	GLB				
34	40 x 80	3200	Ovoid; NW-SE	AB, RM					
							Native Regeneration		
							Spp. Key	Common	Latin
							RM	Red maple	<i>Acer rubrum</i>
							SB	Black (sweet) birch	<i>Betula lenta</i>
							PB	Paper birch	<i>Betula papyrifera</i>
							GB	Gray birch	<i>Betula populifolia</i>
							WA	White ash	<i>Fraxinus americana</i>
							AB	American beech	<i>Fagus grandifolia</i>
							WH	Witch hazel	<i>Hamamelis virginiana</i>
							ASP	Aspen	<i>Populus spp.</i>
							BC	Black cherry	<i>Prunus serotina</i>
							RO	Red oak	<i>Quercus rubra</i>
							Rubus	Brambles (blackberry, raspberry)	<i>Rubus spp.</i>
							Invasive Species		
							Spp. Key	Common	Latin
							BB	Burning bush	<i>Euonymus alatus</i>
							GLB	Glossy buckthorn	<i>Frangula alnus</i>
							MR	Multiflora rose	<i>Rosa multiflora</i>

Town Report 2017

Conservation Commission Highlights



David O'Hearn leads a walk about the American woodcock.

Once again, the Conservation Commission hosted a busy year of public outreach and education events. In late April, they hosted an evening woodcock walk at the Morrissette Property. Participants learned about the quirky life of American woodcock and then ventured out to the fields to view their madding dance first hand. Also in the spring, the Natural Resource Planner and Chair of the Commission hosted several Philips Exeter Academy students during their Climate Action Day in the Henderson-Swasey Town Forest. Students helped to limit erosion potential by adding brush within the area utilized for logging. During the event,

students learned about the timber management plan and the importance of logging to ensure a diverse stand of trees which will help the forest be more climate-resilient. Also in the spring, the Commission sponsored the 26th annual Spring Tree program where Peter Waltz distributed over 200 seedlings to Lincoln Street students as they learned about the role of trees in our environment. Later in the spring, employees from Ben and Jerry's teamed with the Commission to "release apple trees" at the Morrissette property. This process involves trimming back brush to allow more light to reach apple trees and encourage fruit production as a food source for wildlife.

Two scouts worked toward their Eagle badge by constructing kiosks at the Morrissette Property (Daniel Stinson) and McDonnell Property (Caleb Mahoney) and installing interpretive signs that educate the public about the importance of these natural spaces. Also in the spring, it was with great celebration that the Town welcomed the natural upstream migration from alewives following removal of the Great Dam.



Eagle Scouts: Daniel Stinson and Caleb Mahoney.

Their return was documented in a short film by TV-98 available for viewing on YouTube. In early summer the Commission partnered with the Trail Committee and Comcast to host Comcast Cares Day at the Oaklands Town Forest. Employees from Comcast volunteered to help replace a long stretch of rotten planks along the red trail. This labor intensive task was well attended and helped to protect the sensitive wetland from impacts associated with trail use. The Commission partnered with NH Fish and Game Department to provide an educational workshop within the Forest Ridge neighborhood. This development is surrounded by sensitive vernal pools and through education we can help ensure residence understand the value of these species, encourage their involvement in submitting reports to NH Fish and

Game through the rare amphibian database and facilitate long term protection of these ephemeral wetland habitats.

The Commission fostered new relationships by signing a lease with the local Little Brook Farm for haying Raynes Farm and was rewarded in the Fall with the addition of this important barn to the NH State Register of Historic Places. The Chair and the Natural Resource Planner also worked with the Cooperative Middle School's science teacher Bob Johnson to provide a wetland, wetland buffer and water quality education program for 8th grade students. The Commission was also able to achieve its goal of 100% coverage of conservation lands in town by hiring two new interns who, together with the Natural Resource Planner and Commission members, worked to inspect all conservation lands in town for compliance with deed restrictions.



Commission Chair, Bill Campbell at the Morrissette footbridge.

It has been a busy year but as always, the Commission is thankful for the natural resources available to Exeter residents and has enjoyed working to provide personal connections with residents through our many active outreach programs.



Wildflowers at the Morrissette Conservation Area



New Hampshire Association of Conservation Commissions

SERVING NEW HAMPSHIRE'S COMMUNITIES SINCE 1970
54 Portsmouth Street, Concord, NH 03301 | (603) 224-7867 | www.nhacc.org

Annual Survey 2018

The NHACC is surveying its members so that we may find out what you are doing and so we may better serve you. Please discuss these questions at your next conservation commission meeting and return your answers to us by mail, email or scanned copy via email as soon as you are able. The more feedback we get from our members, the more responsive we can be to your needs. Thank you for your time and all that you do for conservation in NH.

1. What are the top 2 most important goals for your conservation commission?
 - a. How have you been successful in meeting your goals?
 - b. How can NHACC help you reach your goals?
2. What are the principal means or activities by which your conservation commission contributes to your Town?
3. Do other town boards seek the guidance of the conservation commission in natural resource protection?
4. Does your commission have a voice in issues related to: Natural Resource Inventories, mapping, conservation easements, Shoreland Protection, Steep Slopes, Wetlands, Lake Host, logging permits, and fundraising? Please let us know where you feel you have the most positive effect.
5. Are you proud of something you have done in the last few years that you would be willing to share on the Resource pages of our website Members section or in our E-news? If yes, please let us know what project you are working on and how it has been successful.
6. Do you have any specific suggestions for topics, resources for our website NHACC.org?
7. Which additional topics you would like to see covered in our E-newsletter?
8. NHACC regularly monitors legislation related to conservation on the state level and provides legislative updates for you. Is this activity helpful to you?
 - a. What legislative or state priorities would you like us to focus on?

9. What are you struggling with that you'd like us to help with?

10. What topics would you like NHACC to provide more regional training?

Please provide current contact information of your conservation commission members so that we may keep you informed with annual meeting mailers and E-news.

Town/City: _____

Member Name: _____

Address: _____

Town/Zip: _____

Email: _____ Can we add you to our E-news list? Yes/No

Member Name: _____

Address: _____

Town/Zip: _____

Email: _____ Can we add you to our E-news list? Yes/No

Member Name: _____

Address: _____

Town/Zip: _____

Email: _____ Can we add you to our E-news list? Yes/No

Member Name: _____

Address: _____

Town/Zip: _____

Email: _____ Can we add you to our E-news list? Yes/No

Member Name: _____

Address: _____

Town/Zip: _____

Email: _____ Can we add you to our E-news list? Yes/No

Updated 10/10/17

Position	First Name	Last Name	Membership	Term Expiration	Address	Phone	Email
BOS Representative	Anne	Surman	Term	4/30/2017	12 Hampton Falls Rd	778-3775	annesurman3@gmail.com
Vice-Chair	Carlos	Guindon	Voting	4/30/2019	50 Brookside Drive, K-7	772-4835	cguindon@comcast.net
Chair	Bill	Campbell	Voting	4/30/2018	111 High St	778-0410	wcampbell@exeter.edu
Treasurer	Andrew	Koff	Voting	4/30/2019	47 Brentwood Rd	244-8677	drewkoff@gmail.com
Clerk	Virginia	Raub	Voting	4/30/2018	3 Kathleen Drive	772-0844	coreyraub@comcast.net
	Alyson	Eberhart	Voting	4/30/2017	11 Kossuth St	580-5860	alysone@wildcats.unh.edu
	Todd	Piskovitch	Voting	4/30/2017	22 Forest St	686-9138	tpisk@comcast.net
	Marie	Richey	Voting	4/30/2018	7 Bell Ave, Apt C	484-888-2435	marie89.richey@gmail.com
	Dave	Short	Alternate	4/30/2018	11 Locuse St	944-1116	dshort11@myfairpoint.net
	Sally	Ward	Alternate	4/30/2018	54 Park Street	772-0838	Ward31@comcast.net



2056 066

In accepting this deed as a gift of the wooded section of Fort Rock Farm from the grantor, The Exeter Conservation Commission, for itself and its successors, exercising its powers under Chapter 36A of the New Hampshire Revised Statutes, binds itself to the following conditions and agrees to administer and maintain the property under the following multi-use concept:

(1) As a wildlife refuge, with activities usually incident to the administration thereof such as but not limited to lumbering and clearing; the planting of grains, shrubs and trees; and the digging of ponds to establish a prosperous habitat for birds, deer and other animals. There will be an absolute prohibition against hunting.

(2) As a recreational area, with trails for walking and places for picnicking but excluding camping, open fires, and motor traffic, except traffic under the control of the Commission for the purposes of lumbering and fire protection or activities permitted in paragraph (1). There will be an absolute prohibition against the use of snowmobiles or snow travelling vehicles or other motor propelled pleasure vehicles on any part of the described premises, whether used on or off an open highway or path.

(3) As a nature-study area, with emphasis on identification and other aids to the study of botany and zoology, and ecology and conservation.

(4) As a forestry area, demonstrating forestry practices with selective cutting under the direction of the Commission and County Forester.

Conservation Commission

12/5/17

Draft Minutes

Call to Order

1. Introduction

Present are Carlos Guindon, Bill Campbell, Dave Short, Virginia Raub, Andrew Koff, Sally Ward, Anne Surman, Alison Eberhardt and Kristin Murphy. The meeting was called to order by Chairman Campbell at 7:00pm.

2. Public Comment

There was no public comment.

Action Items:

3. A Wetland/Shoreland Conditional Use Permit application for a proposed multi-tenant Light Industry/Distribution Facility at 24 Continental Drive (Tax Map 56 Lot 3).

James Petropulos from Hayner/Swanson Inc. spoke about the property. He showed the commission the property on a map. It is located in the CT1 technology park zone. There are 8 lots total in the commercial park, with about 600 feet of common driveway to share with abutting properties. The lot overall is wooded with a mild topographic relief. The wetlands have been flagged and consist of a complex New England wooded wetland, mostly off the property.

Proposed is a 116,000 square foot light industrial distribution facility. The building will contain offices, warehouses, distribution, and light assembly. There will be 90 parking spaces out front, and a loading dock in the back. It will be serviced by the town water and sewer, and underground telephone and electric. There will be minor grading and utility work. The plans represent an impact of 38,800 square feet within the 40-foot wetland, of which 80% will be restored with groundcover. About 20% of impact will be impervious pavement.

The impact ~~are~~ to the Exeter sShoreland Protection District will be in the back and will be 72,000 square feet. For stormwater, they will have a small area catching water. Stormwater basins will contain a sediment base to remove grit. There are two conditional use applications; one for the wetland conservation district and one for the shoreland protection district.

They tried to balance the buffers in the front and back of the property. The impact areas are located in one isolated area. The buffers and stormwater areas provide protection to the Little River nearby. It was also agreed that the property would provide access from Continental Drive to the back area owned by the town. There is a 10 ft pedestrian easement running along the property line. He Mr. Petropulos showed the board potential areas where the wooded area could be accessed. They would like to put in access after the site's development.

Chairman Campbell asked if they were able to change the road so that it was not in the buffer. Mr. Petropulos said that they tried to follow the same route, and that they do not have additional tree clearing in the first 500ft. The buffer was previously disturbed and will be seeded. Brendan Quigley said

that there are options that could be discussed. Ms. Murphy also pointed out that the commission has the ability to make any suggestions to the planning board.

Chairman Campbell expressed his concern over the impervious surface that would be used, and asked if it could be pervious pavement instead. He mentioned a zoning ordinance that includes impervious surface rules. Mr. Petropulos said that they did not believe that the ordinance applied to this part of Little River. The problem with pervious pavement is that there is not good soil underneath, and water would not be able to move through.

Chairman Campbell also asked about snow storage, and Mr. Petropulos showed on the map where it would be, and that they will need to truck snow away when there is too much. Chairman Campbell suggested that they consider the runoff from the snow. He also asked that plantings be added to the nearby trail, and said that more staking and flagging on the site walk would have been helpful. Ms. Raub asked if there would be a retainer wall near the parking lot. Mr. Petropulos said the wall would be very short, and there would be a pathway to the stormwater area as well in case it needed to be maintained. Ms. Raub asked if they will be using any fill. Mr. Petropulos said there will be some in the perimeter, and the soils are such that it is better to bring in dirt.

Chairman Campbell brought up the 5 waiver requests. He was concerned about the waiver for a 75 foot setback for the parking area. Mr. Short mentioned the waiver request to not do a tree inventory. He talked about an oak tree where it would be nice to not have a disturbed area. Mr. Quigley said that the tree is likely not in the way of the development.

Mr. Quigley talked about the wetlands. He said that they differentiated between the wetlands, and that they tend to serve more of a buffer function although there is some water quality and habitat value. They are marginally important wetlands. There is a relatively small impact to them, which will not impact their function. The important wetlands are not being impacted by the development. The building is on the highest point of the site, and will not touch the wetlands near Little River.

Ms. Eberhardt said she would like to see more plantings go in, and also would like a clearer plan for snow storage and removal. The biggest priority of the commission is protecting Little River and the ecosystem it represents. They also wanted to identify the oak tree previously discussed and protect it. Mr. Petropulos said they will improve on the language and bring it to the planning board on the 28th.

MOTION: Ms. Raub moved to recommend to the planning board that the commission has no objections to the wetland and shoreland conditional use permit with ~~some~~ the following conditions:

- The Commission recommends that as a condition of approval, the owner work with the Commission to establish a mutually agreeable location for trail connection prior to issuance of Certificate of Occupancy in order to accommodate the 10' pedestrian right of way established during the subdivision of the industrial complex (D-26568).
- The Commission would like to see additional plantings proposed for the temporary buffer impact areas. They would like priority given to those areas within the buffer for the Exeter Shoreland Protection District to protect the sensitive resources affiliated with the Little River area, as well as the southwest corner of the development closest to the Little River footbridge, in order to reduce visibility of the project from the trail.

- The Commission is concerned about the proposed snow storage within the Exeter Shoreland Protection District. Given the slope and the proximity to the river, they feel snow storage should not be permitted in the western portion of this property due to lack of pre-treatment and potential impacts to the Little River and associated wetlands.
- The Commission would like to confirm that the large oak tree, located near the northwest portion of the property, is out of the project impact area and a note added to the plan identifying it as a tree to be protected.

for the conditional use permit at this property. Ms. Ward seconded the motion, and it passed unanimously.

4. Committee Reports
 a. Treasurer’s Report

Mr. Koff talked about the treasurer’s report. He said that there is some mowing money left since the commission only mowed half of the Morrisette property. The contract services are also under budget. Otherwise, everything is in line with the budget. Ms. Murphy said that the mowing hadn’t been done yet but they had been booked.

Mr. Koff also said there is \$1,000 in the new account for 80 Epping Road. There is stewardship monitoring tied to the easement for the back parcel of land. Ms. Murphy said that the \$1,000 was for monitoring in general, not only at that specific property. She also said she was discussing with finance about if that money will be managed in it’s own account or not.

Mr. Campbell said that instead of using money to fund someone to go to the Barry Conservation Camp, they may use it for signs for the Morrisette property and the Little River Conservation area.

MOTION: Ms. Eberhardt moved to expend not more than \$250 for the signs in the areas listed above. Ms. Raub seconded the motion, and it passed unanimously.

MOTION: Mr. Guindon move to approve the treasurer’s report. Ms. Raub seconded the motion, and it passed unanimously.

b. Property Management

Ms. Murphy said that they had sent a notice to the Barker conservation easement. The town had agreed that they could keep their sanders in place until they needed them, but that they would be removed from the easement afterwards. The sanders have since been removed.

c. Trails

Mr. Guindon spoke about Pete’s Path, and asked about how the road accessing it was regulated because he had seen tire tracks ~~on it and the around it, and it is around a~~ gas line. He suggested putting stones around the area so a vehicle could not just turn around in the area. He also said that the app he suggested at the last meeting for recording invasive areas, IPAYNE, has some issues and he has since been using Outsmart Invasives.

- d. Outreach
 - i. Barry Conservation Camp Contest Winner

There were no applications to the conservation commission for the contest before the deadline.

- e. CC Representatives Report on Other Committees
 - i. Fertilizer Amendment

There is a draft amendment that will go before the planning board. The healthy lawns and clean water committee have been working on it. People were having a difficult time finding sources of suitable compost due to the limitations, so they made some revisions to the language. Now, application of compost or organic products is allowed with an application rate and nitrogen limit. For turf, people also have the option of blending products between synthetic and organic products, and then gradually changing to organic products. It also has a higher annual allowance.

Mr. Guindon asked what the healthy lawns and clean water committee is under. Ms. Murphy said it was established by the board of selectmen. She suggested that the conservation commission write a statement endorsing the amendment. It would be enforced like other zoning ordinances, by code enforcement. She also mentioned the bill currently going through the state house of representatives which would prohibit use restrictions on fertilizer.

MOTION: Mr. Short moved to confirm that the conservation commission had reviewed the amendment, and supports it. Mr. Guindon seconded the motion, and it passed unanimously.

5. Approval of Minutes

Ms. Eberhardt is addressed as a “selectwoman” in the minutes. In one part, ESRLAC is mistakenly spelled as ERLAC.

MOTION: Mr. Koff moved to approve the minutes as amended. Ms. Eberhardt seconded the motion, and it passed unanimously.

Other Business:

Mr. Koff said that as far as the dues for ESRLAC are concerned, they should just leave it at \$100 and not \$200. Selectwoman Surman talked about the Lamprey River Association, and that Exeter needs a representative to their committee ~~in order to receive funding and other support.~~

6. Next Meeting: Date Scheduled (1/9/18), Submission Deadline (12/29/17)

Non-Public Session:

MOTION: Ms. Eberhardt moved to enter into a non-public session, pursuant to RSA 91A:3, II(d) for the consideration of the acquisition, sale, or lease of real or personal property. Ms. Ward seconded the motion, and it passed unanimously by roll call vote at 8:40pm.

Members returned from non-public session at 9:20 pm.

Mr. Short motioned to seal the minutes of the non-public session, seconded by Mr. Guindon. Roll call vote to seal the minutes passed unanimously.

Meeting adjourned at 9:25 pm.

Respectfully submitted by recording secretary Samantha Cave.