

Sep 10, 2021 - 4:46pm F:\MSC\Projects\47175 - Oak Street Extension - Exeter\47175_00 - Baker\Properties\47175_00 - C3D\Design\Production Drawings\Open Space\47175_00 - C-22-25_Drainage.dwg

TEST PIT 5001
0" 2.5Y 3/2 VERY DARK GRAYISH BROWN, SILT LOAM, WEAK FINE GRANULAR, MOIST FRIABLE
10" 2.5Y 4/3 OLIVE BROWN, SILT LOAM, MASSIVE, MOIST FRIABLE, 5% 2.5Y 5/6 LIGHT OLIVE BROWN, REDOXIMORPHIC CONCENTRATIONS AND 5% 2.5Y 4/2 DARK GRAYISH BROWN REDOXIMORPHIC DEPLETIONS
25" 2.5Y 4/3 OLIVE BROWN (PED INTERIORS) AND 2.5Y 5/1 GRAY (PED FACES), CLAY LOAM, BLOCKY, MOIST FIRM AND RESTRICTIVE
90" TERMINATED, NO REFUSAL, OBSERVED SLOW SEEP AT 30", ESTIMATED SEASONAL HIGH WATER TABLE (ESHWT) @ $\leq 10'$

TEST PIT 5002
0" 2.5Y 3/2 VERY DARK GRAYISH BROWN, SILT LOAM, WEAK FINE GRANULAR, MOIST FRIABLE
13" 2.5Y 5/3 LIGHT OLIVE BROWN, SILT LOAM, MASSIVE, MOIST FRIABLE
27" 2.5Y 5/2 GRAYISH BROWN, STONY SILT CLAY LOAM, MASSIVE/BLOCKY, MOIST FIRM AND RESTRICTIVE, 5% 2.5Y 5/1 GRAY REDOXIMORPHIC DEPLETIONS
78" TERMINATED, NO REFUSAL OR OBSERVED WATER, ESHWT @ 27"

TEST PIT 5005
0" 5Y 3/2 DARK OLIVE GRAY, LOAMY SAND (FILL), WEAK FINE GRANULAR, MOIST FRIABLE
10" 2.5Y 5/3 OLIVE, FINE SANDY LOAM (FILL), MASSIVE, MOIST FRIABLE, 10% 5Y 5/6 STRONG BROWN REDOXIMORPHIC CONCENTRATIONS
21" 5Y 2.5/1 BLACK, SILT LOAM, MASSIVE, MOIST TO WET FRIABLE
26" 10Y 4/1 DARK GREENISH GRAY, CLAY, MASSIVE, MOIST TO WET FIRM
54" TERMINATED, NO REFUSAL, OBSERVED STRONG SEEP AT CORNER 24" FROM SOIL SURFACE AND NUMEROUS SEEPS AT 10" ALL AROUND PIT, ESHWT @ 0"

(PIT WAS DUG MOSTLY WITHIN DRIVEWAY AS WETLANDS COME TO THE EDGE OF ROAD ON ONE SIDE AND THE WATER LINE IS BURIED WITHIN THE SHOULDER ON THE OTHER SIDE. PIT WAS EXCAVATED TO 54" TO MINIMIZE DISTURBANCE TO THE EXISTING DRIVEWAY AND CONTRACTOR WAS CONCERNED THAT PIT WILL SETTLE AND VEHICLES WILL GET STUCK.)

TEST PIT 5006
0" 2.5Y 3/1 VERY DARK GRAY, SILT LOAM (FILL), WEAK FINE GRANULAR, MOIST FRIABLE
4" 2.5Y 4/2 DARK GRAYISH BROWN, 2.5Y 3/1 VERY DARK GRAY, 2.5Y 5/2 GRAYISH BROWN, SILT LOAM (FILL), MASSIVE, MOIST TO WET - FRIABLE TO FIRM, NUMEROUS BRICKS AND BRICK PIECES
102" 5CY 6/1 GREENISH GRAY, SANDY CLAY, MASSIVE, MOIST TO WET FIRM AND RESTRICTIVE, MANY PROMINENT REDOXIMORPHIC FEATURES
126" TERMINATED, NO REFUSAL, SLOW SEEPS OBSERVED AT 102", SHWT INDETERMINABLE USING SOIL MORPHOLOGY - ESTIMATED @ 60"

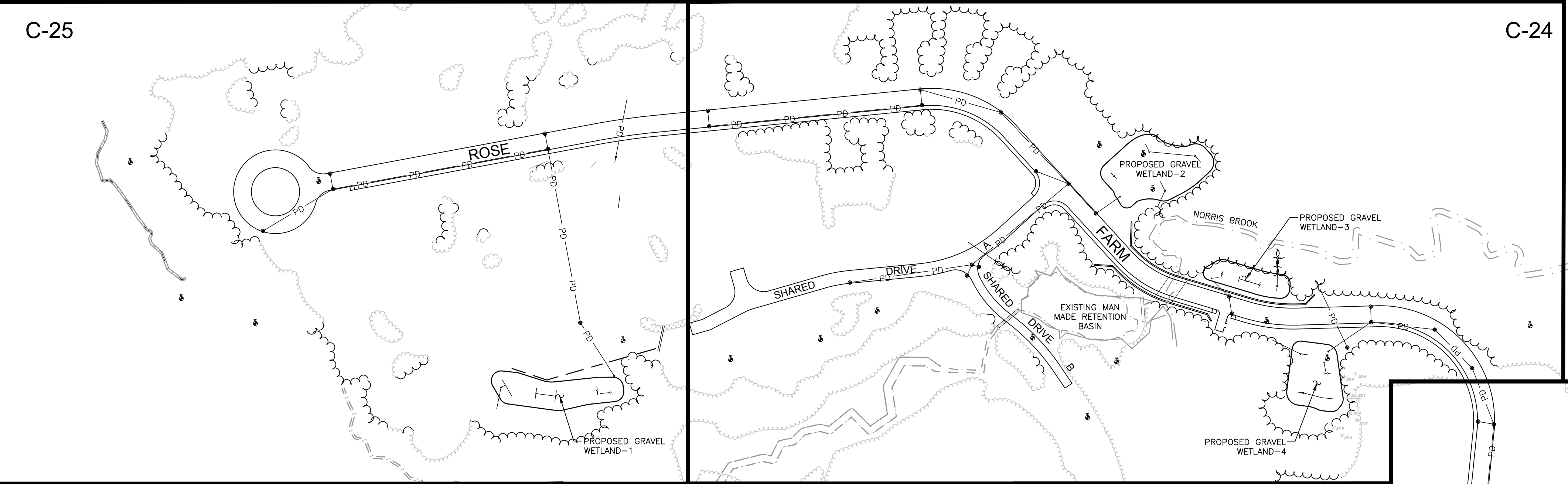
(PIT REPRESENTS [DREDGE] SPOILS FROM NEARBY MAN-MADE POND TO A DEPTH OF 102")

TEST PIT 5008
0" 10YR 2/2 VERY DARK BROWN, SANDY LOAM (FILL), WEAK FINE GRANULAR, MOIST FRIABLE
6" 2.5Y 5/2 GRAYISH BROWN, FINE SANDY LOAM (FILL), MASSIVE, MOIST VERY FRIABLE
13" 2.5Y 3/2 VERY DARK GRAYISH BROWN, SANDY LOAM (FILL), MASSIVE, VERY FRIABLE
42" 5Y 4/1 DARK GRAY, CLAY LOAM (FILL), MASSIVE/BLOCKY, MOIST FIRM AND RESTRICTIVE, MANY PROMINENT REDOXIMORPHIC FEATURES
96" TERMINATED, NO REFUSAL, SLOW SEEPS OBSERVED AT 42", SHWT INDETERMINABLE USING SOIL MORPHOLOGY - ESTIMATED @ $\leq 18'$

TEST PIT 5009
0" 10YR 3/3 DARK BROWN, FINE SANDY LOAM (FILL), MASSIVE, MOIST FRIABLE, ASPHALT PIECES
26" 2.5Y 5/2 GRAYISH BROWN, FINE SANDY LOAM (FILL), MASSIVE, MOIST VERY FRIABLE, 10% 10YR 5/8 YELLOWISH BROWN REDOXIMORPHIC CONCENTRATIONS AND 10% 10YR 6/1 REDOXIMORPHIC DEPLETIONS (LIKELY IMPORTED WITH FILL)
32" 10YR 2/2 VERY DARK BROWN, FINE SANDY LOAM (FILL), MASSIVE, MOIST FRIABLE, NUMEROUS BRICKS AND SMALL POCKETS OF SILT LOAM, CONCRETE SLAB PIECES OBSERVED
96" TERMINATED, NO REFUSAL OR OBSERVED WATER, SHWT INDETERMINABLE USING SOIL MORPHOLOGY - ESTIMATED @ $\leq 36'$

TEST PIT 5010
0" 10YR 3/3 DARK BROWN, FINE SANDY LOAM (FILL), MASSIVE, MOIST FRIABLE
18" 2.5Y 5/2 GRAYISH BROWN, FINE SANDY LOAM (FILL), MASSIVE, MOIST VERY FRIABLE, 10% 10YR 5/8 YELLOWISH BROWN REDOXIMORPHIC CONCENTRATIONS AND 10% 10YR 6/1 REDOXIMORPHIC DEPLETIONS (LIKELY IMPORTED WITH FILL)
24" 10YR 2/2 VERY DARK BROWN, FINE SANDY LOAM (FILL), MASSIVE, MOIST VERY FRIABLE, NUMEROUS BRICKS, SMALL POCKETS OF COAL ASH(?) AND POTTERY FRAGMENTS OBSERVED
108" TERMINATED, NO REFUSAL OR OBSERVED WATER, SHWT INDETERMINABLE USING SOIL MORPHOLOGY - ESTIMATED @ $\leq 36'$

C-25



TEST PIT 5011
0" 10YR 3/2 VERY DARK GRAYISH BROWN, STONY SANDY LOAM (FILL), MASSIVE, MOIST FRIABLE, REDOXIMORPHIC FEATURES (LIKELY IMPORTED WITH FILL)
60" 2.5Y 5/3 LIGHT OLIVE BROWN, SILT LOAM, MASSIVE, MOIST TO WET FRIABLE, MANY DISTINCT REDOXIMORPHIC FEATURES, LENSES OF FINE SAND
96" TERMINATED, NO REFUSAL, OBSERVED WATER AT 84", SHWT INDETERMINABLE USING SOIL MORPHOLOGY - ESTIMATED @ $\leq 36'$

TEST PIT 5012
0" 10YR 2/2 VERY DARK BROWN, LOAMY SAND, WEAK FINE GRANULAR, MOIST FRIABLE
8" 10YR 3/4 DARK YELLOWISH BROWN, LOAMY SAND, MASSIVE, MOIST FRIABLE
14" 10YR 5/6 YELLOWISH BROWN, FINE SAND, MASSIVE, MOIST FRIABLE, 3% 10YR 5/8 YELLOWISH BROWN REDOXIMORPHIC CONCENTRATIONS AND 3% 10YR 5/3 BROWN REDOXIMORPHIC DEPLETIONS
27" 2.5Y 5/2 GRAYISH BROWN, SILT LOAM, BLOCKY, MOIST FIRM, MANY PROMINENT REDOXIMORPHIC FEATURES
102" TERMINATED, NO REFUSAL OR OBSERVED WATER, ESHWT @ 14"

TEST PIT 5014
0" 2.5Y 3/2 VERY DARK GRAYISH BROWN, SILT LOAM, WEAK FINE GRANULAR, MOIST FRIABLE
8" 2.5Y 4/3 OLIVE BROWN, SILT LOAM, MASSIVE, MOIST FRIABLE, 1% 2.5Y 5/4 LIGHT OLIVE BROWN REDOXIMORPHIC CONCENTRATIONS AND 1% 2.5Y 5/2 GRAYISH BROWN REDOXIMORPHIC DEPLETIONS
17" 2.5Y 4/3 OLIVE BROWN, SILT LOAM, WEAK FINE ANGULAR BLOCKY, MOIST FIRM IN PLACE
32" 2.5Y 5/4 LIGHT OLIVE BROWN, FINE SAND, MODERATE MEDIUM PLATY, MOIST TO WET FIRM AND RESTRICTIVE, 10% 10YR 5/6 YELLOWISH BROWN REDOXIMORPHIC CONCENTRATIONS AND 10% 2.5Y 5/1 GRAY REDOXIMORPHIC DEPLETIONS
40" 2.5Y 5/4 LIGHT OLIVE BROWN, FINE SAND, MASSIVE, WET LOOSE
90" TERMINATED, NO REFUSAL, SIGNIFICANT WATER OBSERVED @ 36", ESHWT @ 8"

TEST PIT 5003
0" 2.5Y 3/2 VERY DARK GRAYISH BROWN, FINE SANDY LOAM, WEAK FINE GRANULAR, MOIST FRIABLE
8" 2.5Y 4/3 OLIVE BROWN, FINE SANDY LOAM, MASSIVE, MOIST FRIABLE, 5% 2.5Y 5/4 LIGHT OLIVE BROWN REDOXIMORPHIC CONCENTRATIONS AND 1% 2.5Y 5/1 GRAY REDOXIMORPHIC DEPLETIONS
20" 2.5Y 5/2 GRAYISH BROWN, SILT CLAY LOAM, MASSIVE/BLOCKY, MOIST FIRM TO VERY FIRM AND RESTRICTIVE, 30% 7.5YR 5/6 STRONG BROWN REDOXIMORPHIC CONCENTRATIONS
84" TERMINATED, NO REFUSAL OR OBSERVED WATER, ESHWT @ 20"

TEST PIT 5007
0" 2.5Y 3/2 VERY DARK GRAYISH BROWN, SILT LOAM, WEAK FINE GRANULAR, MOIST FRIABLE, MANY ROOTS
6" 2.5Y 4/3 OLIVE BROWN, SILT LOAM, WEAK FINE GRANULAR, MOIST FRIABLE
20" 2.5Y 5/2 GRAYISH BROWN, SILT CLAY LOAM, MASSIVE/BLOCKY, MOIST FIRM TO VERY FIRM AND RESTRICTIVE, 30% 7.5YR 5/6 STRONG BROWN REDOXIMORPHIC CONCENTRATIONS
84" TERMINATED, NO REFUSAL OR OBSERVED WATER, ESHWT @ 20"

TEST PIT 5013
0" 2.5Y 3/3 DARK OLIVE BROWN, VERY FINE SANDY LOAM, WEAK FINE GRANULAR, MOIST FRIABLE
6" 2.5Y 4/3 OLIVE BROWN, SILT LOAM, MASSIVE, MOIST FRIABLE
18" 2.5Y 4/2 DARK GRAYISH BROWN, SILT CLAY LOAM, MASSIVE/BLOCKY, MOIST FIRM AND RESTRICTIVE, 10% 2.5Y 5/6 LIGHT OLIVE BROWN REDOXIMORPHIC CONCENTRATIONS AND 5% 2.5Y 6/1 GRAY REDOXIMORPHIC DEPLETIONS
84" TERMINATED, NO REFUSAL OR OBSERVED WATER, ESHWT @ 18"

TEST PIT 5004
0" 2.5Y 3/2 VERY DARK GRAYISH BROWN, FINE SANDY LOAM, WEAK FINE GRANULAR, MOIST FRIABLE, MANY ROOTS
6" 2.5Y 4/3 OLIVE BROWN, SILT LOAM, MASSIVE, MOIST FRIABLE, 3% 2.5Y 5/6 LIGHT OLIVE BROWN REDOXIMORPHIC DEPLETIONS
18" 2.5Y 5/1 GRAY, SILT LOAM AND SILT CLAY LOAM, BLOCKY/PLATY, MOIST FIRM TO VERY FIRM AND RESTRICTIVE, 5% COARSE ANGULAR ROCK FRAGMENTS
66" TERMINATED, POSSIBLE REFUSAL, NO OBSERVED WATER, ESHWT @ $\leq 9'$

DRAINAGE NOTES

- 1. ALL STORM DRAIN LINES SHALL BE HIGH DENSITY POLYETHYLENE (HANCOR "HQ", ADS "N-12", OR APPROVED EQUAL) UNLESS OTHERWISE NOTED FOR ROOF DRAINS & CANOPY LEADERS.
- 2. ALL CATCH BASINS, MANHOLES, AND DRAIN LINES SHALL BE THOROUGHLY CLEANED OF ALL SEDIMENT AND DEBRIS AFTER ALL AREAS HAVE BEEN STABILIZED.
- 3. ALL MATERIALS AND CONSTRUCTION SHALL CONFORM WITH APPLICABLE TOWN, COUNTY, AND STATE CODES.
- 4. LENGTH OF PIPE IS PROVIDED FOR CONVENIENCE ONLY. ACTUAL PIPE LENGTH SHALL BE DETERMINED IN THE FIELD.
- 5. ALL PROPOSED MANHOLES, CATCH BASINS AND OTHER STORMWATER STRUCTURES SHALL BE SUBJECT TO REVIEW AND APPROVAL UNDER SUBMITTAL REQUIREMENTS.
- 6. ROAD AND DRAINAGE CONSTRUCTION SHALL CONFORM TO THE TYPICAL SECTIONS AND DETAILS SHOWN ON THE PLANS, AND SHALL MEET LOCAL STANDARDS AND THE REQUIREMENTS OF THE LATEST NHDOT STANDARD SPECIFICATIONS FOR ROADS AND BRIDGE CONSTRUCTION AND THE NHDOT STANDARD STRUCTURE DRAWINGS UNLESS OTHERWISE NOTED.
- 7. STORM DRAINAGE SYSTEM SHALL BE CONSTRUCTED TO LINE AND GRADE AS SHOWN ON THE PLANS. CONSTRUCTION METHODS SHALL CONFORM TO NHDOT STANDARD SPECIFICATIONS, SECTION 603. CATCH BASINS AND DRAIN MANHOLES SHALL CONFORM TO SECTION 604. ALL CATCH BASIN GRATES SHALL BE TYPE B AND CONFORM TO NHDOT STANDARDS AND SPECIFICATIONS UNLESS OTHERWISE NOTED.
- 8. ALL MANHOLES IN PAVEMENT SHALL HAVE RIMS SET TO FINISH GRADE REGARDLESS OF ANY ELEVATIONS OTHERWISE SHOWN.

PLANNING BOARD FILE #17-27

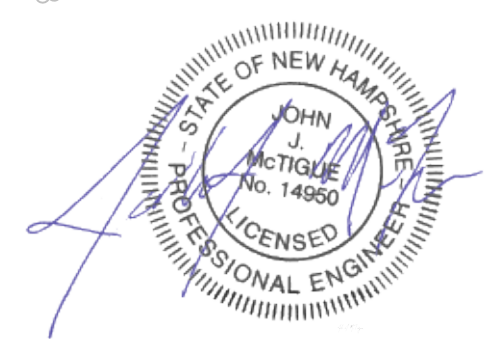
APPROVED BY THE EXETER PLANNING BOARD

ON _____ AND
CHAIRMAN: _____
SECRETARY: _____

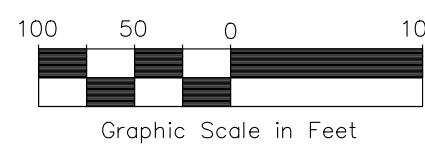


Copyright 2021 © Thomas F. Moran, Inc.
48 Constitution Drive, Bedford, N.H. 03110
All rights reserved. These plans and materials may not be copied, duplicated, replicated or otherwise reproduced in any form whatsoever without the prior written permission of Thomas F. Moran, Inc.
This plan is not effective unless signed by a duly authorized officer of Thomas F. Moran, Inc.
CONTACT DIG SAFE 72 BUSINESS HOURS PRIOR TO CONSTRUCTION

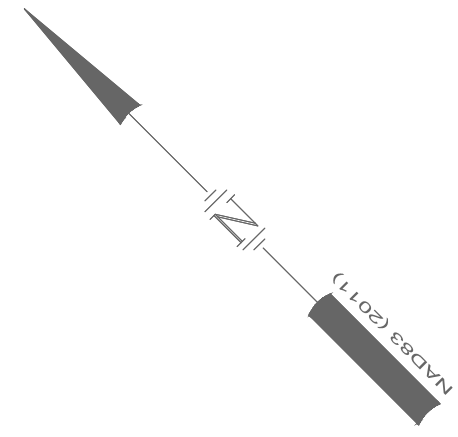
TAX MAP 54 LOTS 5, 6 & 7 TAX MAP 63 LOT 205
OVERALL DRAINAGE PLAN
EXETER ROSE FARM
FOREST STREET & OAK STREET EXTENSION
EXETER, NEW HAMPSHIRE, COUNTY OF ROCKINGHAM
BENJAMIN & JOAN DAGOSTINO REVOCABLE TRUST
OWNED BY
EXETER ROSE FARM, LLC & BENJAMIN & JOAN DAGOSTINO REVOCABLE TRUSTS
SCALE: 1"=100'
1"=200'
AUGUST 15, 2017



REV.	DATE	DESCRIPTION	DR	CK
9	02/09/21	REVISED PER AOT SUBMITTAL	JJM	
8	11/26/18	REVISED PER PLANNING BOARD COMMENTS	ETP	JJM
7	11/05/18	REVISED PER PLANNING BOARD COMMENTS	ETP	JJM
6	10/01/18	REVISED PER PLANNING BOARD COMMENTS	ETP	JJM
5	8/31/18	REVISED PER TRC COMMENTS	ETP	JJM
4	7/10/18	REVISED PER PLANNING BOARD COMMENTS	ETP	JJM
3	2/20/18	REVISED PER REVIEW COMMENTS	ETP	JJM
2	10/31/17	REVISED PER DESIGN REVIEW COMMENTS	ETP	JJM

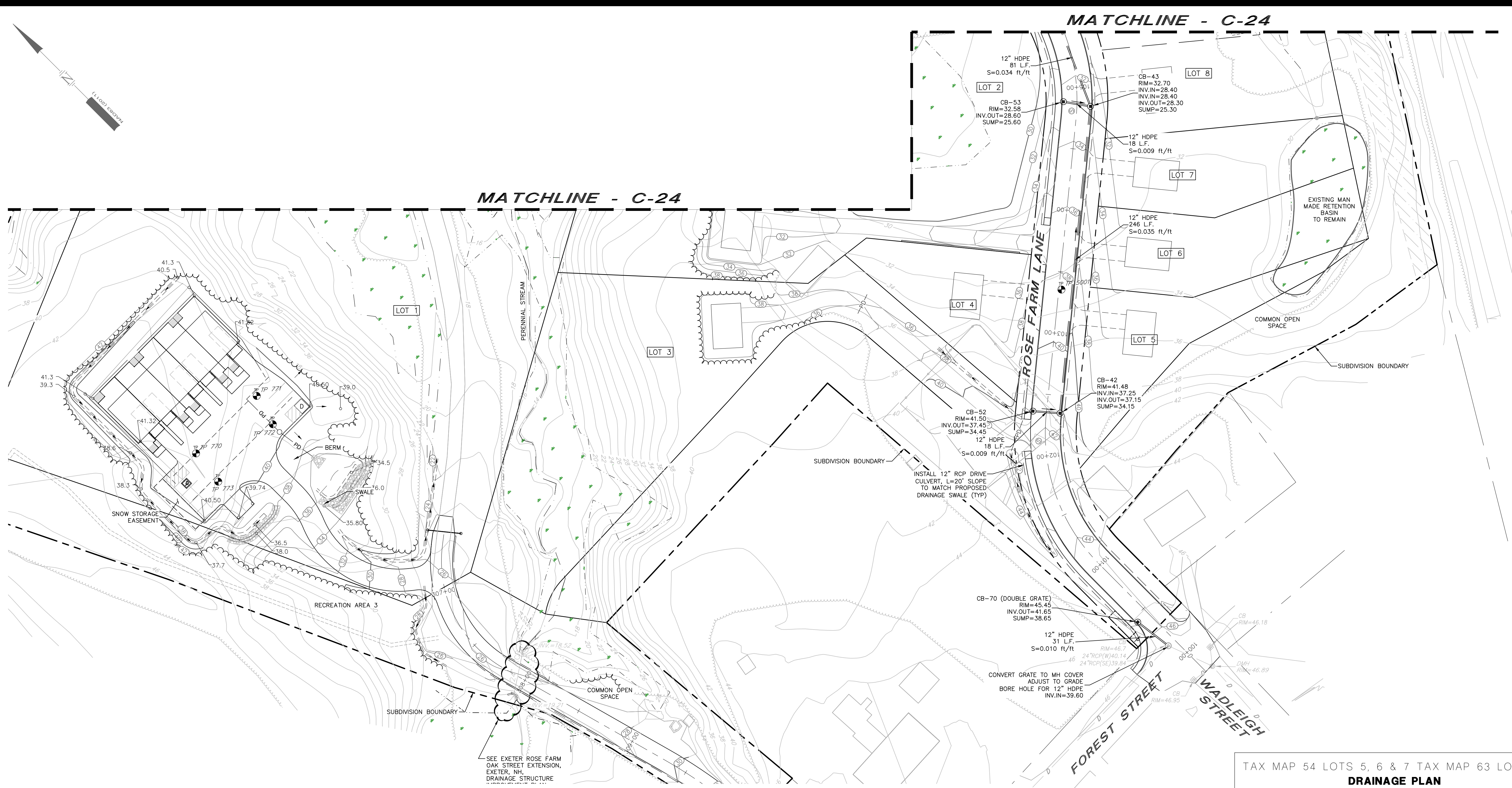


TFM **MSC**
Civil Engineers
Structural Engineers
Traffic Engineers
Land Surveyors
Landscape Architects
Scientists
170 Commerce Way, Suite 102
Portsmouth, NH 03801
Phone (603) 431-2222
Fax (603) 431-0910
www.tfmoran.com
47175.00
DR ETP FB
CK JJM CADFILE
47175-00_Drainage.dwg
C-22



MATCHLINE - C-24

MATCHLINE - C-24



Sep.10.2021 - 4:47pm
 F:\MSC Projects\47175 - Oak Street Extension - Exeter\47175-00 - C:\D\Design\Production Drawings\Open Space\47175-00_C-22-25_Drainage.dwg

PLANNING BOARD FILE #17-27

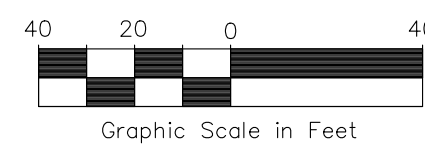
APPROVED BY THE EXETER PLANNING BOARD

ON _____
 CHAIRMAN: _____ AND
 SECRETARY: _____

Copyright 2021 © Thomas F. Moran, Inc.
 48 Constitution Drive, Bedford, N.H. 03110
 All rights reserved. These plans and materials may not be copied, duplicated, replicated or otherwise reproduced in any form whatsoever without the prior written permission of Thomas F. Moran, Inc.
 This plan is not effective unless signed by a duly authorized officer of Thomas F. Moran, Inc.



LEGEND		
FES	FLARED END SECTION	---
HDPE	HIGH DENSITY POLYETHYLENE	---
INV.	INVERT	▨
L	LENGTH	---
L.F.	LINEAR FEET	---
CB	PROPOSED CATCH BASIN	--- PD ---
DMH	PROPOSED DRAIN MANHOLE	---
S	SLOPE	---
⊙	PROPOSED DRAIN MANHOLE	---
⊕	PROPOSED CATCH BASIN	---
→	PROPOSED DRAINAGE FLOW	---
▨	EXISTING DRAIN BASIN	---
⊕	EXISTING DRAIN MANHOLE	---
---	EDGE OF EXISTING WETLANDS	---
---	PROPOSED RIP RAP	---
---	EXISTING DRAIN LINE	---
---	PROPOSED DRAIN LINE	---
---	PROPOSED SWALE	---
---	PROPERTY LINE	---
---	SUBDIVISION BOUNDARY	---
---	PROPOSED EASEMENT LINE	---

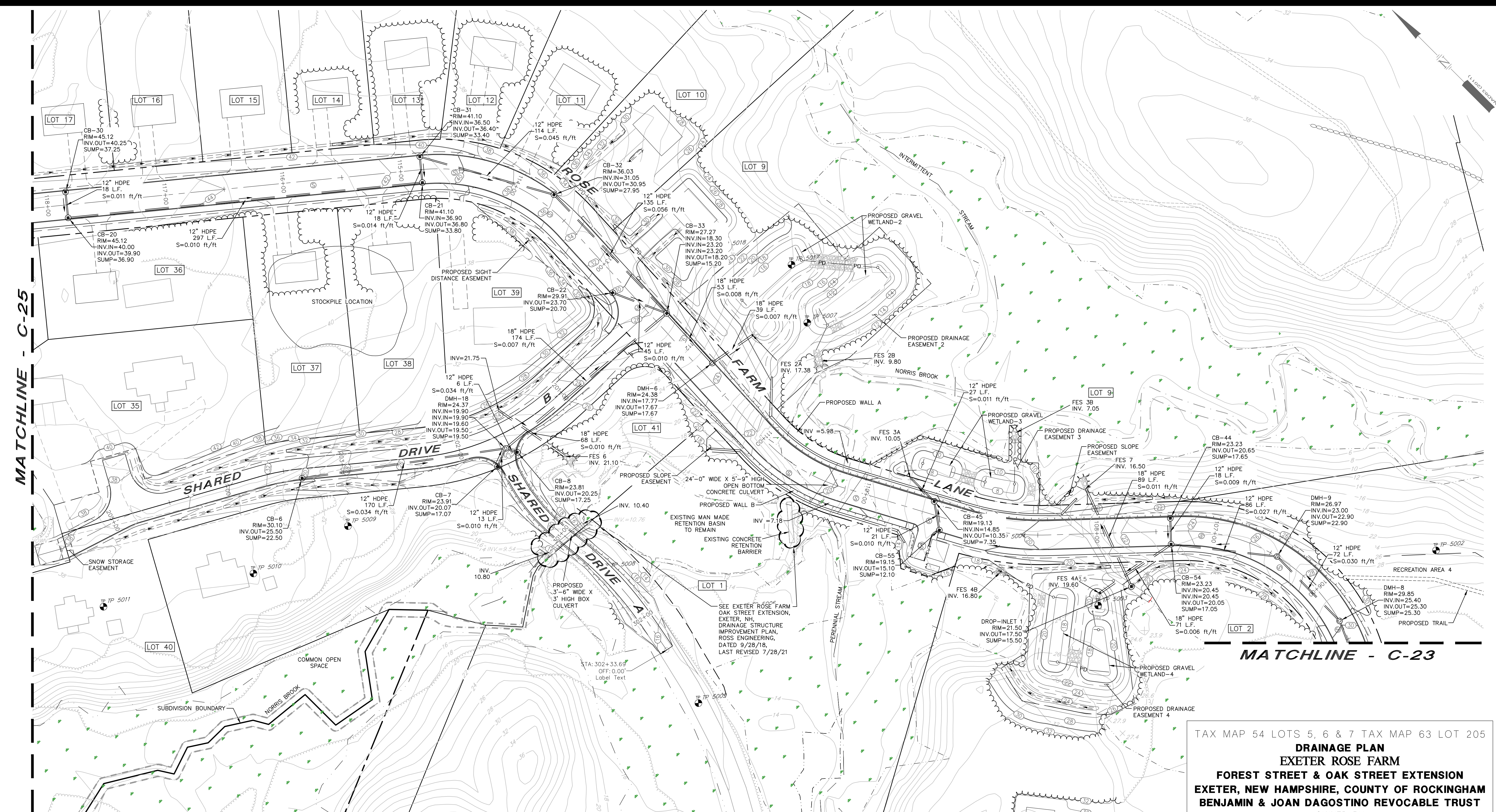


REV.	DATE	DESCRIPTION	DR	CK
10	08/31/21	REVISED PER AOT COMMENTS	JUM	
9	02/09/21	REVISED PER AOT SUBMITTAL	JUM	
8	11/26/18	REVISED PER PLANNING BOARD COMMENTS	ETP	JUM
7	11/05/18	REVISED PER PLANNING BOARD COMMENTS	ETP	JUM
6	10/01/18	REVISED PER PLANNING BOARD COMMENTS	ETP	JUM
5	8/31/18	REVISED PER TRC COMMENTS	ETP	JUM
4	7/10/18	REVISED PER PLANNING BOARD COMMENTS	ETP	JUM
3	2/20/18	REVISED PER REVIEW COMMENTS	ETP	JUM
2	10/31/17	REVISED PER DESIGN REVIEW COMMENTS	ETP	JUM



TAX MAP 54 LOTS 5, 6 & 7 TAX MAP 63 LOT 205
DRAINAGE PLAN
EXETER ROSE FARM
FOREST STREET & OAK STREET EXTENSION
EXETER, NEW HAMPSHIRE, COUNTY OF ROCKINGHAM
BENJAMIN & JOAN DAGOSTINO REVOCABLE TRUST
 OWNED BY
EXETER ROSE FARM, LLC & BENJAMIN & JOAN DAGOSTINO REVOCABLE TRUSTS
 SCALE: 1"=40'
 1"=80'
 AUGUST 15, 2017

 TFM	 MSC <small>A Division of TFMoran, Inc.</small>	Civil Engineers Structural Engineers Traffic Engineers Land Surveyors Landscape Architects Scientists	170 Commerce Way, Suite 102 Portsmouth, NH 03801 Phone (603) 431-2222 Fax (603) 431-0910 www.tfmoran.com
		FILE 47175.00 DR ETP FB CK JUM CADFILE 47175-00_Drainage.dwg C-23	

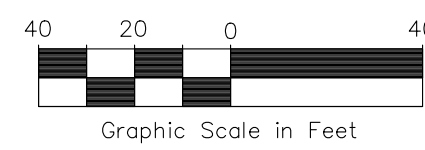
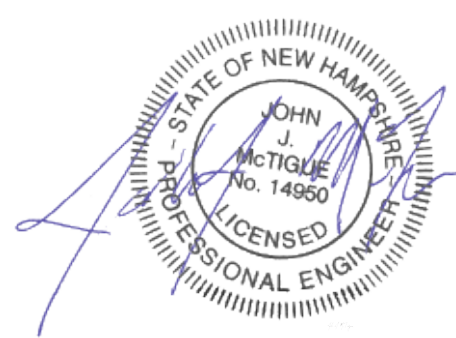


PLANNING BOARD FILE #17-27

APPROVED BY THE EXETER PLANNING BOARD

ON _____ AND
 CHAIRMAN: _____
 SECRETARY: _____

Copyright 2021 © Thomas F. Moran, Inc.
 48 Constitution Drive, Bedford, N.H. 03110
 All rights reserved. These plans and materials may not be copied, duplicated, replicated or otherwise reproduced in any form whatsoever without the prior written permission of Thomas F. Moran, Inc.
 This plan is not effective unless signed by a duly authorized officer of Thomas F. Moran, Inc.



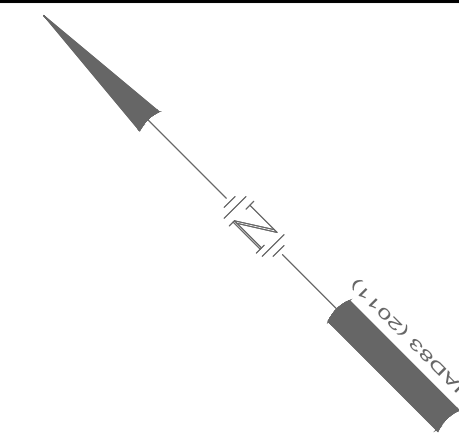
TAX MAP 54 LOTS 5, 6 & 7 TAX MAP 63 LOT 205
DRAINAGE PLAN
EXETER ROSE FARM
FOREST STREET & OAK STREET EXTENSION
EXETER, NEW HAMPSHIRE, COUNTY OF ROCKINGHAM
BENJAMIN & JOAN DAGOSTINO REVOCABLE TRUST
 OWNED BY
EXETER ROSE FARM, LLC &
BENJAMIN & JOAN DAGOSTINO REVOCABLE TRUSTS
 SCALE: 1"=40'
 1"=80'
 AUGUST 15, 2017

REV.	DATE	DESCRIPTION	DR	CK
10	08/31/21	REVISED PER AOT COMMENTS	JJM	
9	02/09/21	REVISED PER AOT SUBMITTAL	JJM	
8	11/26/18	REVISED PER PLANNING BOARD COMMENTS	ETP	JJM
7	11/05/18	REVISED PER PLANNING BOARD COMMENTS	ETP	JJM
6	10/01/18	REVISED PER PLANNING BOARD COMMENTS	ETP	JJM
5	8/31/18	REVISED PER TRC COMMENTS	ETP	JJM
4	7/10/18	REVISED PER PLANNING BOARD COMMENTS	ETP	JJM
3	2/20/18	REVISED PER REVIEW COMMENTS	ETP	JJM
2	10/31/17	REVISED PER DESIGN REVIEW COMMENTS	ETP	JJM

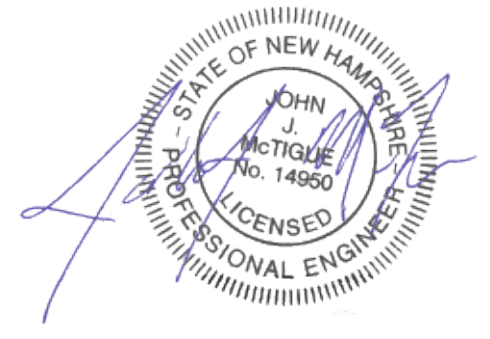
TFM **MSC**
 Civil Engineers
 Structural Engineers
 Traffic Engineers
 Land Surveyors
 Landscape Architects
 Scientists
 170 Commerce Way, Suite 102
 Portsmouth, NH 03801
 Phone (603) 431-2222
 Fax (603) 431-0910
 www.tfmoran.com

47175.00
 DR ETP FB
 CK JJM CADFILE
 47175-00_Drainage.dwg
 C-24

Sep 10, 2021 - 4:47 PM
 F:\MSC Projects\47175 - Oak Street Extension - Exeter\47175-00_CADD\Design\Production Drawings\Open Space\47175-00_C-22-25_Drainage.dwg



MATCHLINE - C-24

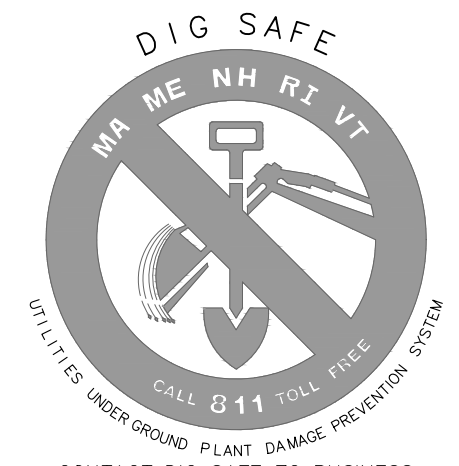


TAX MAP 54 LOTS 5, 6 & 7 TAX MAP 63 LOT 205
DRAINAGE PLAN
EXETER ROSE FARM
FOREST STREET & OAK STREET EXTENSION
EXETER, NEW HAMPSHIRE, COUNTY OF ROCKINGHAM
BENJAMIN & JOAN DAGOSTINO REVOCABLE TRUST
 OWNED BY
EXETER ROSE FARM, LLC &
BENJAMIN & JOAN DAGOSTINO REVOCABLE TRUSTS
 SCALE: 1"=40'
 1"=80' AUGUST 15, 2017

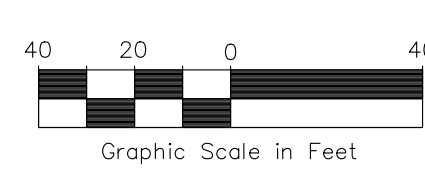
PLANNING BOARD FILE #17-27

APPROVED BY THE EXETER PLANNING BOARD

ON _____ AND
 CHAIRMAN: _____ SECRETARY: _____



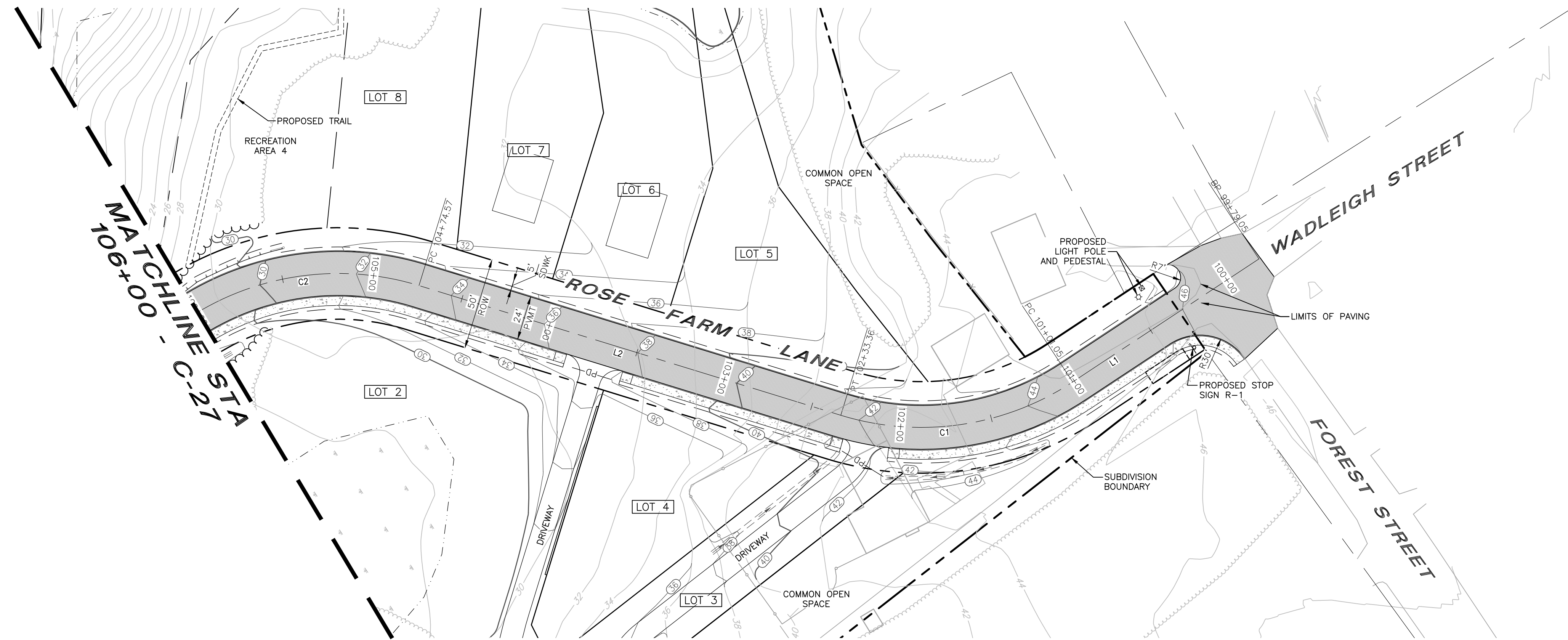
Copyright 2021 © Thomas F. Moran, Inc.
 48 Constitution Drive, Bedford, N.H. 03110
 All rights reserved. These plans and materials may not be copied, duplicated, replicated or otherwise reproduced in any form whatsoever without the prior written permission of Thomas F. Moran, Inc.
 This plan is not effective unless signed by a duly authorized officer of Thomas F. Moran, Inc.
 CONTACT DIG SAFE 72 BUSINESS HOURS PRIOR TO CONSTRUCTION



REV.	DATE	DESCRIPTION	DR	CK
10	08/31/21	REVISED PER AOT COMMENTS	JJM	
9	02/09/21	REVISED PER AOT SUBMITTAL	JJM	
8	11/26/18	REVISED PER PLANNING BOARD COMMENTS	ETP	JJM
7	11/05/18	REVISED PER PLANNING BOARD COMMENTS	ETP	JJM
6	10/01/18	REVISED PER PLANNING BOARD COMMENTS	ETP	JJM
5	8/31/18	REVISED PER TRC COMMENTS	ETP	JJM
4	7/10/18	REVISED PER PLANNING BOARD COMMENTS	ETP	JJM
3	2/20/18	REVISED PER REVIEW COMMENTS	ETP	JJM
2	10/31/17	REVISED PER DESIGN REVIEW COMMENTS	ETP	JJM

		Civil Engineers Structural Engineers Traffic Engineers Land Surveyors Landscape Architects Scientists	170 Commerce Way, Suite 102 Portsmouth, NH 03801 Phone (603) 431-2222 Fax (603) 431-0910 www.tfmoran.com

Sep 10, 2021 - 4:47pm F:\MSC\Projects\47175 - Oak Street Extension - Exeter\47175-00_CAD\Design\Production Drawings\Open Space\47175-00_C-25-25_Drainage.dwg



ALIGNMENT LINE DATA		
LINE NO.	BEARING	LENGTH
L1	N00°12'42"E	122.00'
L2	N50°45'03"E	241.21'

ALIGNMENT CURVE DATA			
LINE NO.	RADIUS	LENGTH	DELTA
C1	150.00'	132.31'	50°32'21"
C2	150.00'	125.43'	97°28'25"

NOTES

- TIP DOWNS SHALL BE PROVIDED ON EACH END OF PROPOSED DRIVEWAYS.

LAYOUT & MATERIAL NOTES

- ALL MATERIALS AND CONSTRUCTION SHALL CONFORM TO APPLICABLE TOWN, STATE, AND FEDERAL CODES.
- CONTRACTOR TO NOTIFY ENGINEER IN WRITING OF ANY DISCREPANCIES OF PROPOSED LAYOUT AND EXISTING FEATURES.
- THE CONTRACTOR SHALL EMPLOY A LICENSED LAND SURVEYOR TO DETERMINE ALL LINES AND GRADES.
- ALL ON-SITE CURBING SHALL BE VERTICAL GRANITE CURBING. ALL DIMENSIONS ARE TO THE FACE OF CURB UNLESS NOTED OTHERWISE.
- CURBING ALIGNMENT SHALL BE MODIFIED TO AVOID CONFLICTS WITH ALL UTILITY MANHOLES OR POLE AND PEDESTALS AND OTHER CASTINGS. ALL CONFLICTS SHALL BE REVIEWED WITH THE OWNER PRIOR TO PLACEMENT OF CURB FOR APPROVAL OF MODIFIED ALIGNMENT.
- WHERE NEW CURB MEETS EXISTING CURB OR CURBING OF A DIFFERENT MATERIAL OR CONFIGURATION, A TRANSITION PIECE SHALL BE INCLUDED SO THAT CONNECTION IS FLUSH IN ALIGNMENT, WIDTH AND REVEAL.
- ALL PAVEMENT MARKINGS AND SIGNS TO CONFORM TO THE LATEST EDITIONS OF "MANUAL ON UNIFORM TRAFFIC CONTROL DEVICES", "STANDARD ALPHABETS FOR HIGHWAY SIGNS AND PAVEMENT MARKINGS" AND THE AMERICANS WITH DISABILITIES ACT REQUIREMENTS.
- WRITTEN DIMENSIONS HAVE PRECEDENCE OVER SCALED DIMENSIONS. THE CONTRACTOR SHALL USE CAUTION WHEN SCALING REPRODUCED PLANS. IN CASE OF CONFLICT BETWEEN THIS PLAN SET AND ANY OTHER DRAWING AND/OR SPECIFICATION, THE ENGINEER SHALL BE NOTIFIED IMMEDIATELY FOR CLARIFICATIONS.

PAVEMENT NOTES

- WHERE PROPOSED PAVEMENT MEETS EXISTING PAVEMENT, THE SEAM SHALL BE A SAW CUT EDGE AND TREATED WITH EMULSION.
- ADJUST ALL MANHOLES, CATCHBASINS, CURB BOXES, MONITORING WELL BOXES, ETC. WITHIN LIMITS OF WORK TO FINISH GRADE PRIOR TO INSTALLATION OF SURFACE PAVEMENT LAYER.
- WHERE EXISTING PAVEMENT THAT IS OVERLAID MEETS EXISTING PAVEMENT TO REMAIN, THE LIMITS SHALL BE MILLED TO CREATE A 5" WIDE BY 1.5" DEEP KEY JOINT (SEE DETAIL).
- THE GRADE SURFACE TOLERANCE AT THE INTERFACE BETWEEN EXISTING PAVEMENT TO REMAIN AND PROPOSED NEW PAVEMENT SHALL NOT VARY MORE THEN 3/8" FROM A 10' STRAIGHT EDGE, MEASURED IN ANY DIRECTION PLACED AT ANY LOCATION ALONG THE INTERFACE.
- ALL SIDEWALK AND OTHER CURB REVEALS NOT IDENTIFIED TO BE FLUSH SHALL BE 6" WITH A TOLERANCE OF PLUS OR MINUS 3/8"
- THE FINISHED GRADE AT BOTTOM OF ALL ACCESSIBLE RAMPS SHALL BE FLUSH WITH PAVEMENT WITH A TOLERANCE OF PLUS OR MINUS 1/4".
- COMPLETE PERMANENT PAVEMENT TRENCH PATCH FOR UTILITY INSTALLATION PRIOR TO OVERLAY.
- PROPOSED SPEED LIMIT IS 30 MPH.

PLANNING BOARD FILE #17-27

APPROVED BY THE EXETER PLANNING BOARD

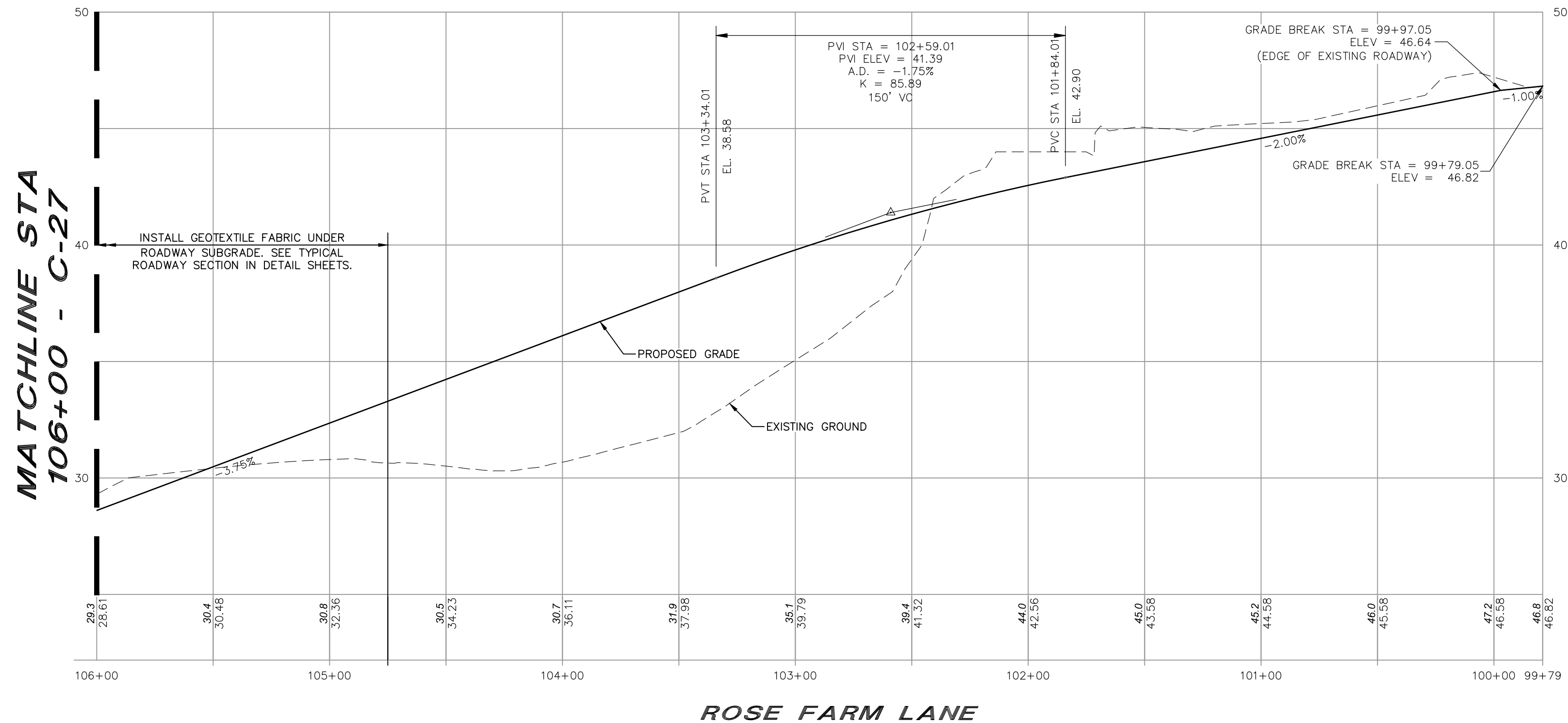
ON _____
 CHAIRMAN: _____ AND
 SECRETARY: _____

Copyright 2021 © Thomas F. Moran, Inc.
 48 Constitution Drive, Bedford, N.H. 03110

All rights reserved. These plans and materials may not be copied, duplicated, replicated or otherwise reproduced in any form whatsoever without the prior written permission of Thomas F. Moran, Inc.
 This plan is not effective unless signed by a duly authorized officer of Thomas F. Moran, Inc.

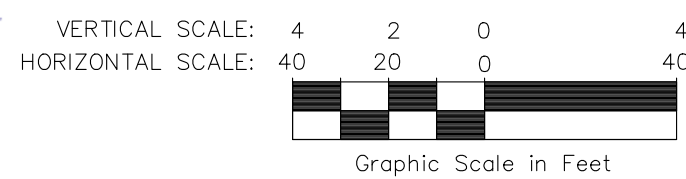
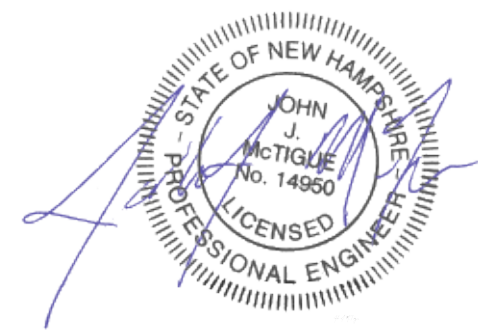


CONTACT DIG SAFE 72 BUSINESS HOURS PRIOR TO CONSTRUCTION



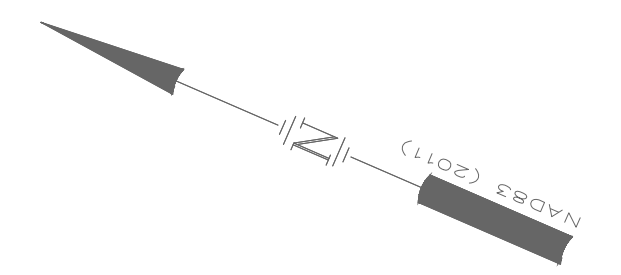
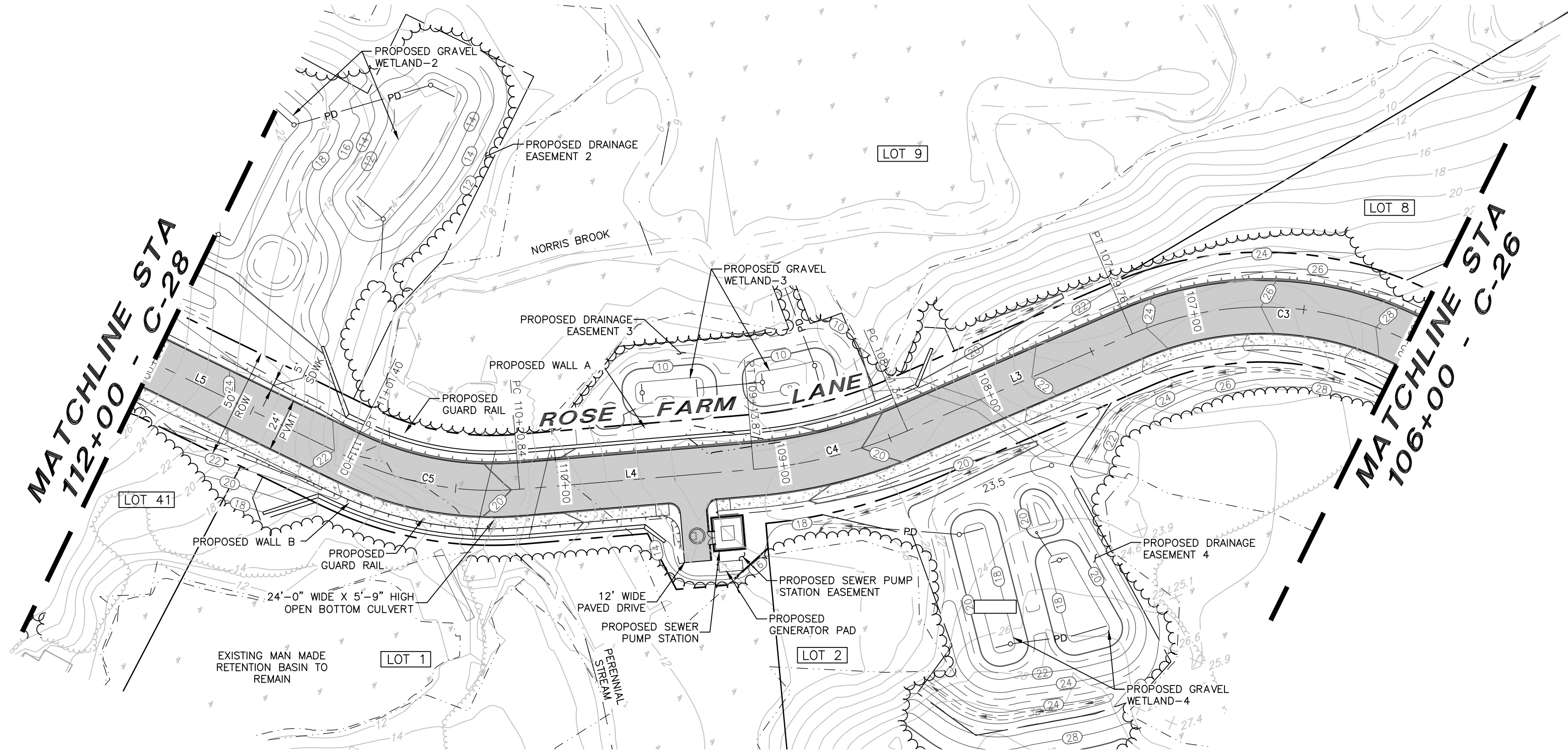
SIGN LEGEND					
ID	SIGN	SIZE (INCHES)		DESIGN (COLORING, TEXT SIZE, SPACING, SHAPE, RETROREFLECTIVITY, ETC.)	NO. OF SIGNS
		WIDTH	HEIGHT		
R1-1		30	30	REFER TO THE 2009 MANUAL ON UNIFORM TRAFFIC CONTROL DEVICES (MUTCD) FOR STREETS AND HIGHWAYS	2
R5-11C		12	18	RED LETTERING, WHITE BACKGROUND, REFLECTIVE LETTERING AND BACKGROUND, MIN OF 0.80 ALUMINUM	1

TAX MAP 54 LOTS 5, 6 & 7 TAX MAP 63 LOT 205
PLAN AND PROFILE
EXETER ROSE FARM
FOREST STREET & OAK STREET EXTENSION
EXETER, NEW HAMPSHIRE, COUNTY OF ROCKINGHAM
BENJAMIN & JOAN DAGOSTINO REVOCABLE TRUST
 OWNED BY
EXETER ROSE FARM, LLC & BENJAMIN & JOAN DAGOSTINO REVOCABLE TRUSTS
 SCALE: 1"=40'
 1"=80'
 AUGUST 15, 2017



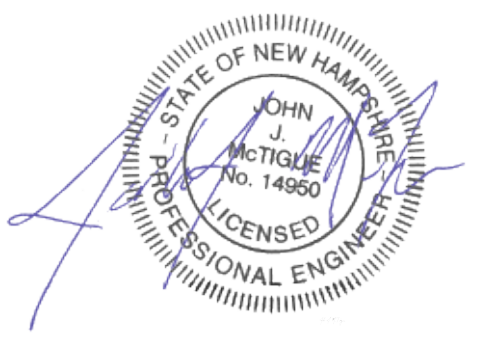
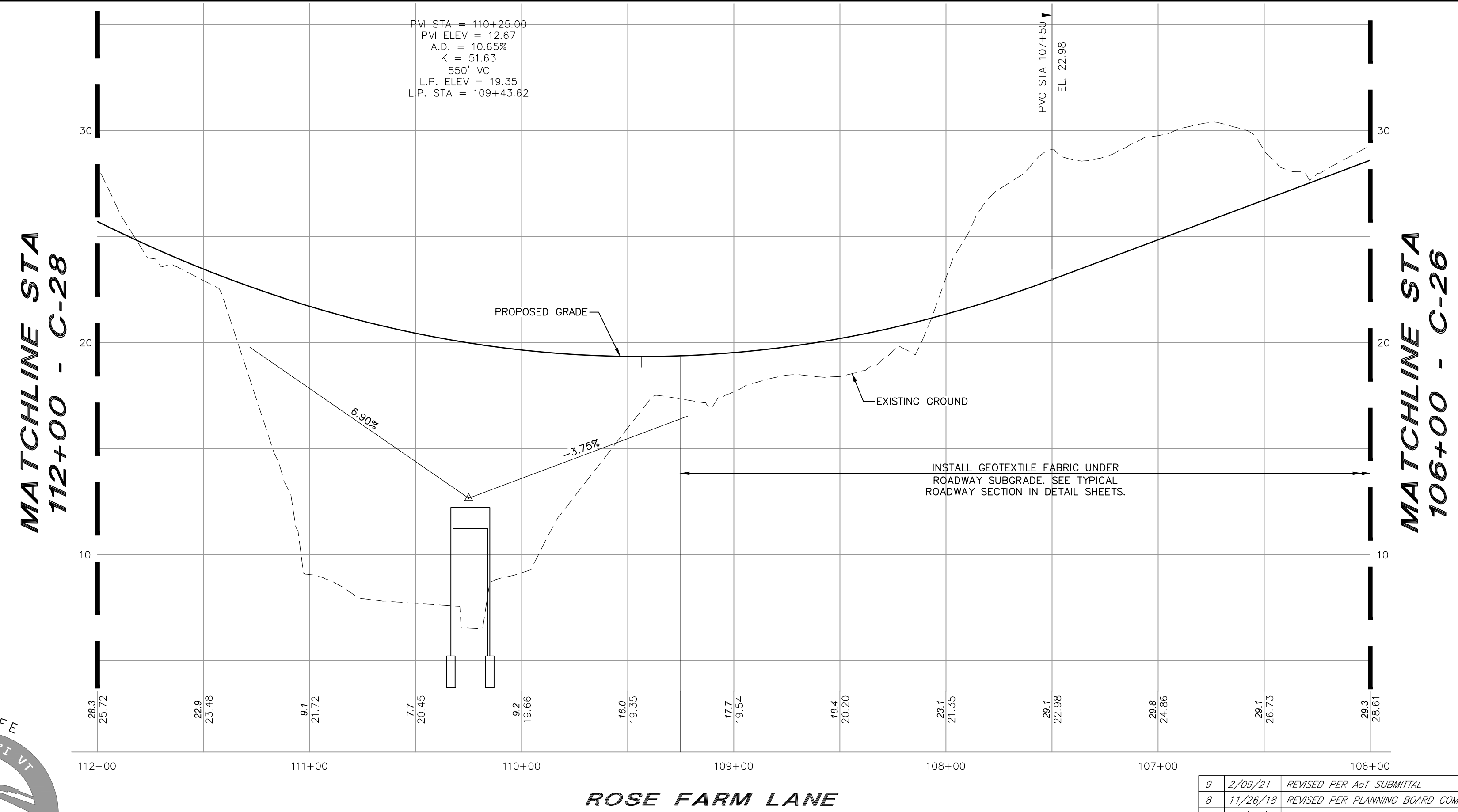
REV.	DATE	DESCRIPTION	DR	CK
9	2/09/21	REVISED PER AOT SUBMITTAL	JUM	
8	11/26/18	REVISED PER PLANNING BOARD COMMENTS	ETP	JUM
7	11/05/18	REVISED PER PLANNING BOARD COMMENTS	ETP	JUM
6	10/01/18	REVISED PER PLANNING BOARD COMMENTS	ETP	JUM
5	8/31/18	REVISED PER TRC COMMENTS	ETP	JUM
4	7/10/18	REVISED PER PLANNING BOARD COMMENTS	ETP	JUM
3	2/20/18	REVISED PER REVIEW COMMENTS	ETP	JUM
2	10/31/17	REVISED PER DESIGN REVIEW COMMENTS	ETP	JUM
1	9/26/17	REVISED PER TRC COMMENTS	ETP	JUM

 TFM	 MSC A Division of TFMoran, Inc.	Civil Engineers Structural Engineers Traffic Engineers Land Surveyors Landscape Architects Scientists	170 Commerce Way, Suite 102 Portsmouth, NH 03801 Phone (603) 431-2222 Fax (603) 431-0910 www.tfmoran.com
		DR: ETP CK: JUM	FB: CADFILE 47175-00_Plan-Profile.dwg



ALIGNMENT LINE DATA		
LINE NO.	BEARING	LENGTH
L3	N46°43'23"W	111.59'
L4	N28°15'12"W	106.97'
L5	N02°31'04"E	98.60'

ALIGNMENT CURVE DATA			
LINE NO.	RADIUS	LENGTH	DELTA
C3	150.00'	129.76'	97°28'25"
C4	225.00'	72.53'	18°28'10"
C5	150.00'	80.56'	30°46'16"



PLANNING BOARD FILE #17-27

APPROVED BY THE EXETER PLANNING BOARD

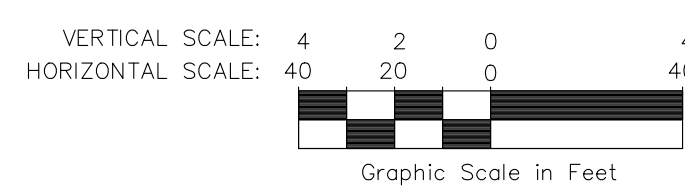
ON _____
 CHAIRMAN: _____ AND
 SECRETARY: _____

Copyright 2021 © Thomas F. Moran, Inc.
 48 Constitution Drive, Bedford, N.H. 03110
 All rights reserved. These plans and materials may not be copied, duplicated, replicated or otherwise reproduced in any form whatsoever without the prior written permission of Thomas F. Moran, Inc.
 This plan is not effective unless signed by a duly authorized officer of Thomas F. Moran, Inc.



CONTACT DIG SAFE 72 BUSINESS HOURS PRIOR TO CONSTRUCTION

ROSE FARM LANE

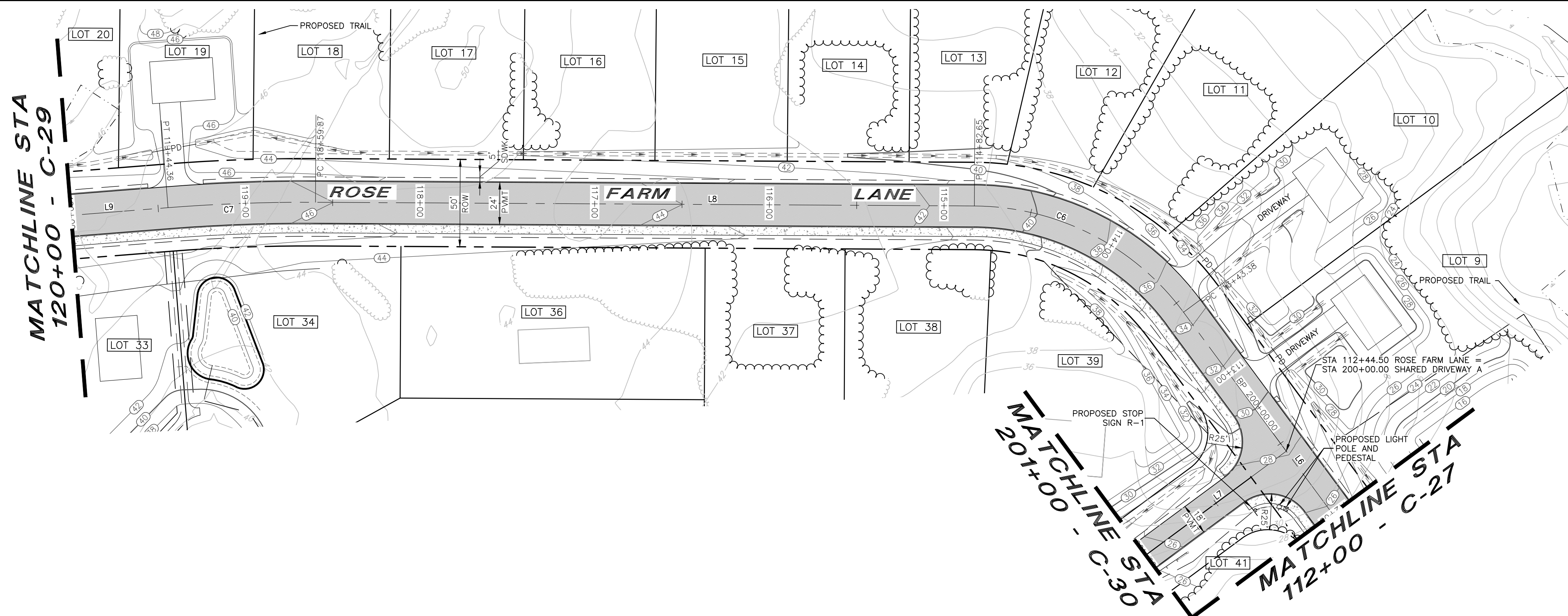


REV.	DATE	DESCRIPTION	DR	CK
9	2/09/21	REVISED PER AOT SUBMITTAL	JJM	
8	11/26/18	REVISED PER PLANNING BOARD COMMENTS	ETP	JJM
7	11/05/18	REVISED PER PLANNING BOARD COMMENTS	ETP	JJM
6	10/01/18	REVISED PER PLANNING BOARD COMMENTS	ETP	JJM
5	8/31/18	REVISED PER TRC COMMENTS	ETP	JJM
4	7/10/18	REVISED PER PLANNING BOARD COMMENTS	ETP	JJM
3	2/20/18	REVISED PER REVIEW COMMENTS	ETP	JJM
2	10/31/17	REVISED PER DESIGN REVIEW COMMENTS	ETP	JJM
1	9/26/17	REVISED PER TRC COMMENTS	ETP	JJM

TAX MAP 54 LOTS 5, 6 & 7 TAX MAP 63 LOT 205
PLAN AND PROFILE
EXETER ROSE FARM
FOREST STREET & OAK STREET EXTENSION
EXETER, NEW HAMPSHIRE, COUNTY OF ROCKINGHAM
BENJAMIN & JOAN DAGOSTINO REVOCABLE TRUST
 OWNED BY
EXETER ROSE FARM, LLC & BENJAMIN & JOAN DAGOSTINO REVOCABLE TRUSTS
 SCALE: 1"=40'
 1"=80'
 AUGUST 15, 2017

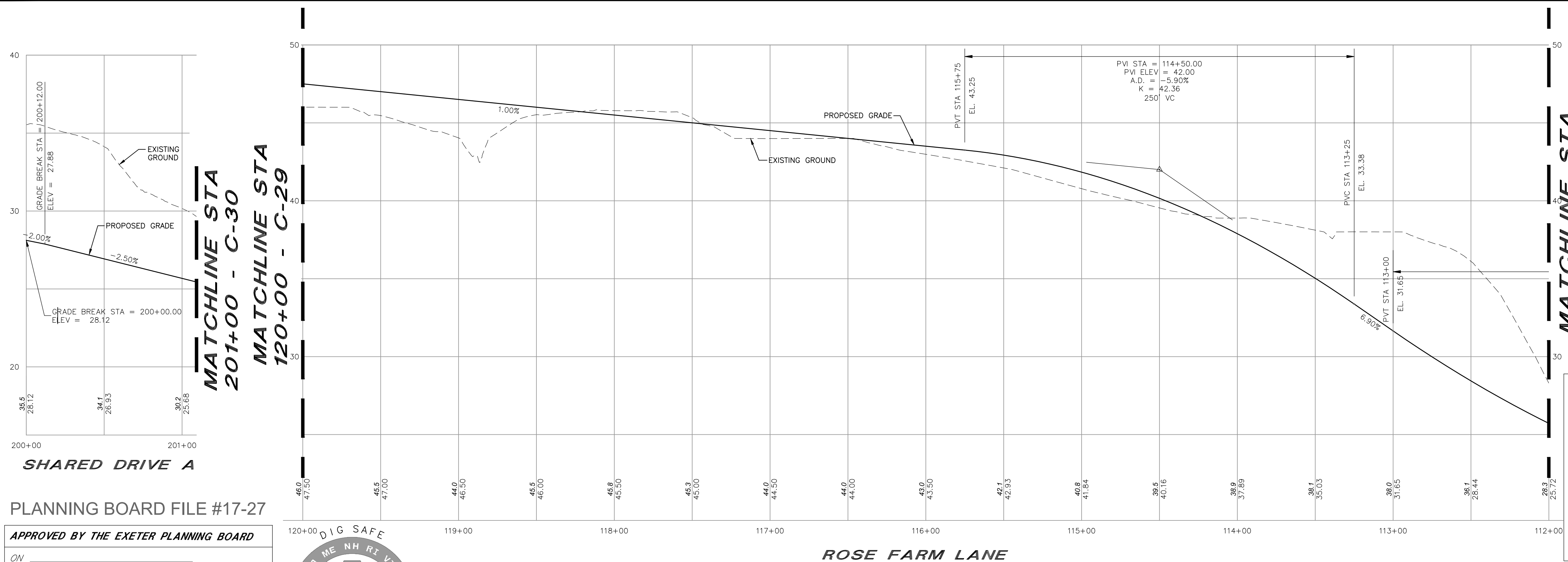
		Civil Engineers Structural Engineers Traffic Engineers Land Surveyors Landscape Architects Scientists	170 Commerce Way, Suite 102 Portsmouth, NH 03801 Phone (603) 431-2222 Fax (603) 431-0910 www.tfmoran.com
		DR ETP FB CK JIM CADFILE	47175.00 47175-00_Plan-Profile.dwg C-27

Sep 10, 2021 - 4:48pm F:\MSC Projects\47175 - Oak Street Extension - Exeter\47175-00 - Baker Properties\47175-00_C3D\Design\Production Drawings\Open Space\47175-00_C-26-31_Plan-Profile.dwg



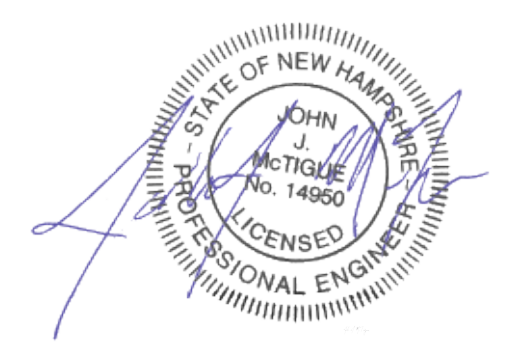
ALIGNMENT LINE DATA		
LINE NO.	BEARING	LENGTH
L6	N02°31'04"E	143.38'
L7	N87°28'56"W	100.00'
L8	N50°40'45"W	377.22'
L9	N65°31'11"W	55.64'

ALIGNMENT CURVE DATA			
LINE NO.	RADIUS	LENGTH	DELTA
C6	150.00'	139.27'	53°11'48"
C7	1000.00'	84.49'	04°50'27"



MATCHLINE STA 112+00 - C-27

MATCHLINE STA 201+00 - C-30
MATCHLINE STA 120+00 - C-29



TAX MAP 54 LOTS 5, 6 & 7 TAX MAP 63 LOT 205
PLAN AND PROFILE
EXETER ROSE FARM
FOREST STREET & OAK STREET EXTENSION
EXETER, NEW HAMPSHIRE, COUNTY OF ROCKINGHAM
BENJAMIN & JOAN DAGOSTINO REVOCABLE TRUST
 OWNED BY
EXETER ROSE FARM, LLC & BENJAMIN & JOAN DAGOSTINO REVOCABLE TRUSTS
 SCALE: 1"=40'
 1"=80'
 AUGUST 15, 2017

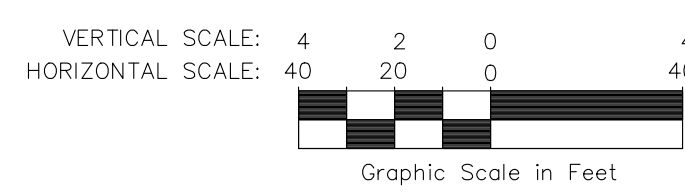
PLANNING BOARD FILE #17-27

APPROVED BY THE EXETER PLANNING BOARD

ON _____ AND
 CHAIRMAN: _____ AND
 SECRETARY: _____



Copyright 2021 © Thomas F. Moran, Inc.
 48 Constitution Drive, Bedford, N.H. 03110
 All rights reserved. These plans and materials may not be copied, duplicated, replicated or otherwise reproduced in any form whatsoever without the prior written permission of Thomas F. Moran, Inc.
 This plan is not effective unless signed by a duly authorized officer of Thomas F. Moran, Inc.

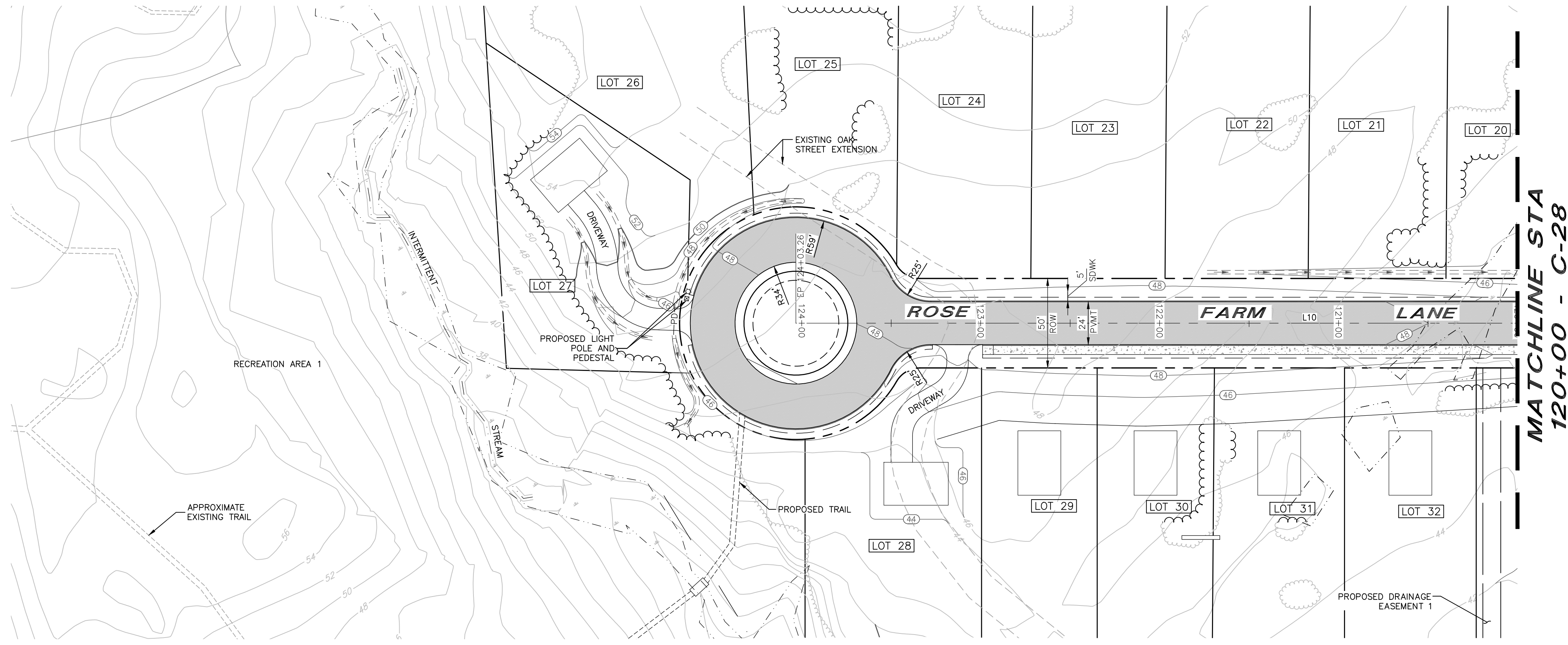


REV.	DATE	DESCRIPTION	DR	CK
9	2/09/21	REVISED PER AOT SUBMITTAL	JJM	
8	11/26/18	REVISED PER PLANNING BOARD COMMENTS	ETP	JJM
7	11/05/18	REVISED PER PLANNING BOARD COMMENTS	ETP	JJM
6	10/01/18	REVISED PER PLANNING BOARD COMMENTS	ETP	JJM
5	8/31/18	REVISED PER TRC COMMENTS	ETP	JJM
4	7/10/18	REVISED PER PLANNING BOARD COMMENTS	ETP	JJM
3	2/20/18	REVISED PER REVIEW COMMENTS	ETP	JJM
2	10/31/17	REVISED PER DESIGN REVIEW COMMENTS	ETP	JJM
1	9/26/17	REVISED PER TRC COMMENTS	ETP	JJM

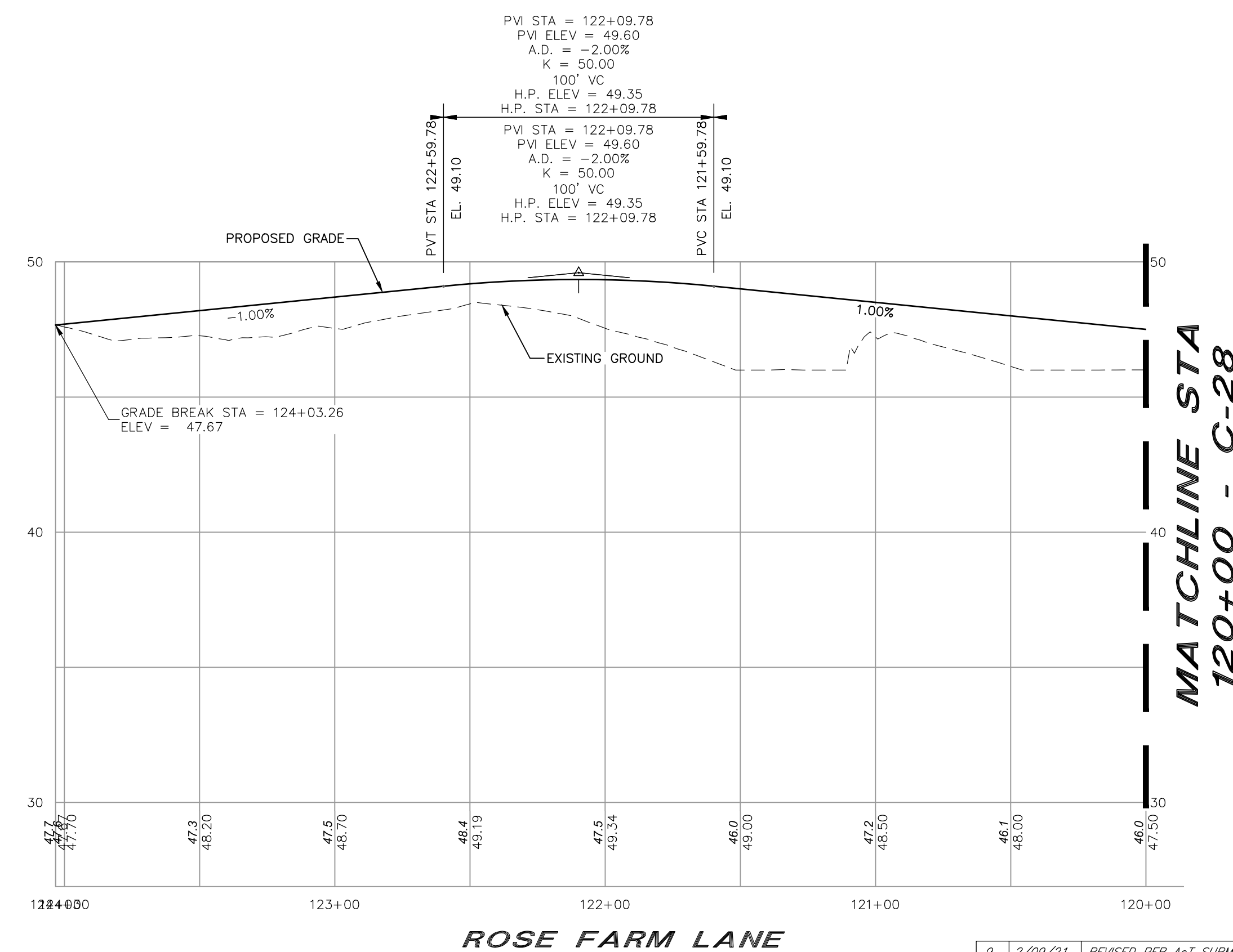
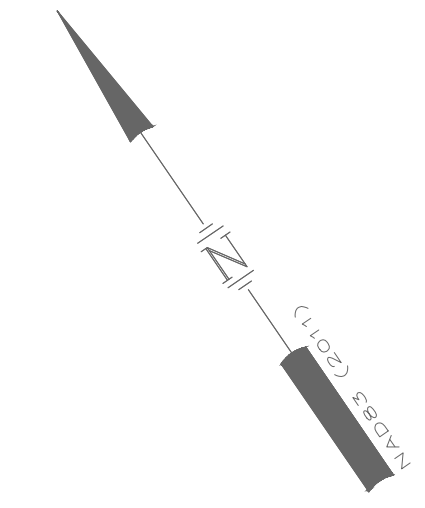
		Civil Engineers Structural Engineers Traffic Engineers Land Surveyors Landscape Architects Scientists	170 Commerce Way, Suite 102 Portsmouth, NH 03801 Phone (603) 431-2222 Fax (603) 431-0910 www.tfmoran.com

Sep 10, 2021 - 4:49pm F:\MSC Projects\47175 - Oak Street Extension - Exeter\47175-00 - Baker Properties\47175-00_C3D\Design\Production Drawings\Open Space\47175-00_C-26-31_Plan-Profile.dwg

Sep.10.2021 - 4:49pm F:\MSC\Projects\47175 - Oak Street Extension - Exeter\47175-00 - Baker Properties\4775-00_C3D\Design\Production Drawings\Open Space\4775-00_C-26-31_Plan-Profile.dwg



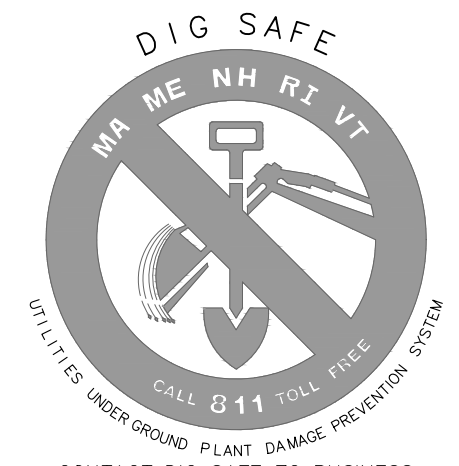
ALIGNMENT LINE DATA		
LINE NO.	BEARING	LENGTH
L10	N55°31'11"W	403.26'



PLANNING BOARD FILE #17-27

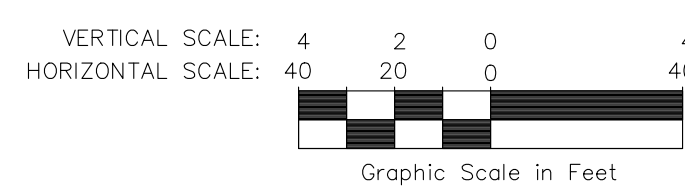
APPROVED BY THE EXETER PLANNING BOARD

ON _____
 CHAIRMAN: _____ AND
 SECRETARY: _____



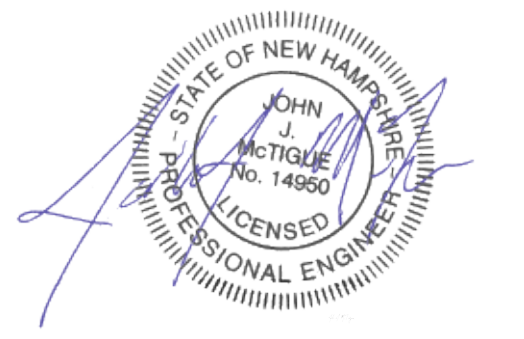
Copyright 2021 © Thomas F. Moran, Inc.
 48 Constitution Drive, Bedford, N.H. 03110
 All rights reserved. These plans and materials may not be copied, duplicated, replicated or otherwise reproduced in any form whatsoever without the prior written permission of Thomas F. Moran, Inc.
 This plan is not effective unless signed by a duly authorized officer of Thomas F. Moran, Inc.

CONTACT DIG SAFE 72 BUSINESS HOURS PRIOR TO CONSTRUCTION

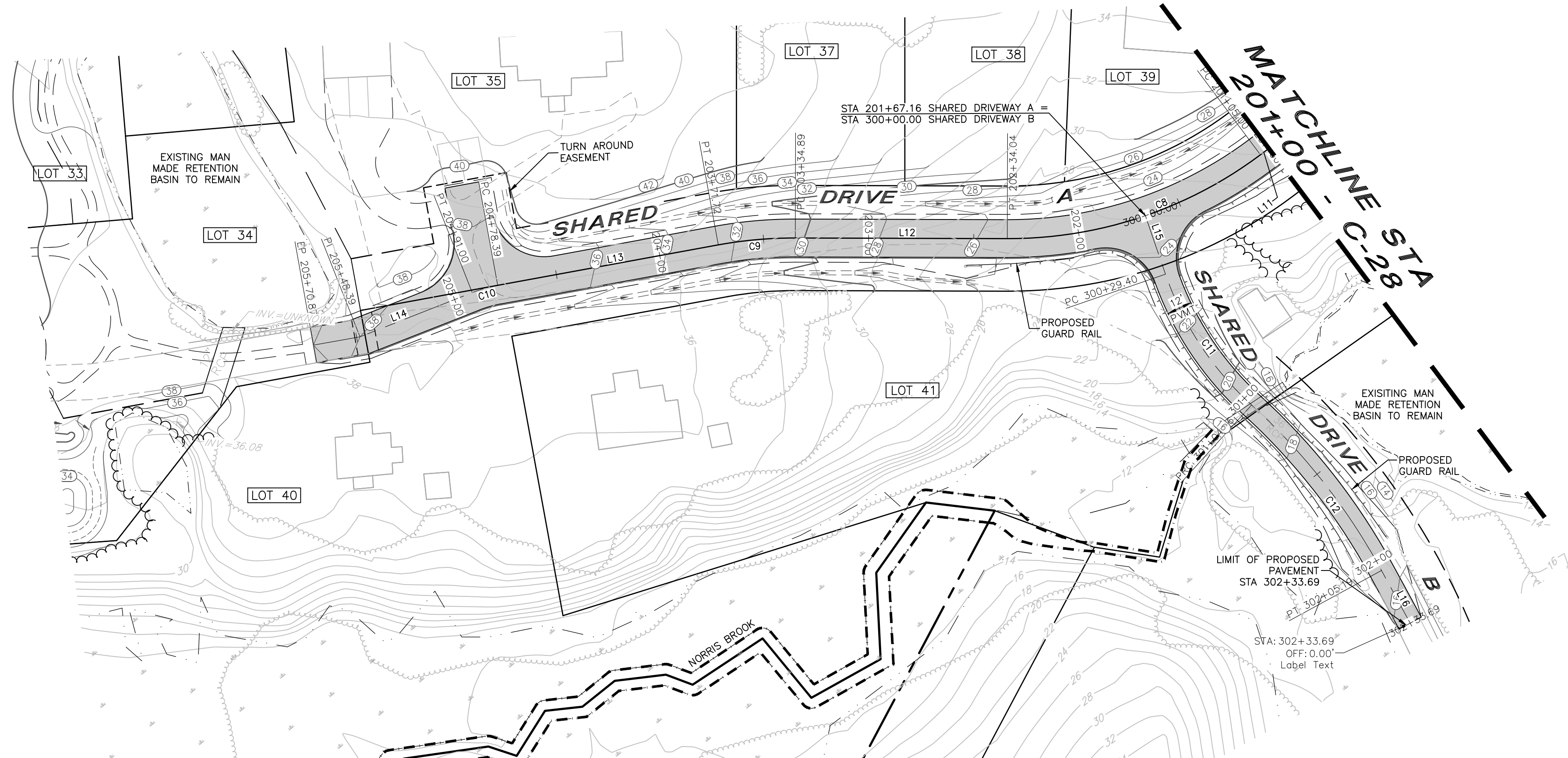


REV.	DATE	DESCRIPTION	DR	CK
9	2/09/21	REVISED PER AOT SUBMITTAL	JJM	
8	11/26/18	REVISED PER PLANNING BOARD COMMENTS	ETP	JJM
7	11/05/18	REVISED PER PLANNING BOARD COMMENTS	ETP	JJM
6	10/01/18	REVISED PER PLANNING BOARD COMMENTS	ETP	JJM
5	8/31/18	REVISED PER TRC COMMENTS	ETP	JJM
4	7/10/18	REVISED PER PLANNING BOARD COMMENTS	ETP	JJM
3	2/20/18	REVISED PER REVIEW COMMENTS	ETP	JJM
2	10/31/17	REVISED PER DESIGN REVIEW COMMENTS	ETP	JJM
1	9/26/17	REVISED PER TRC COMMENTS	ETP	JJM

TAX MAP 54 LOTS 5, 6 & 7 TAX MAP 63 LOT 205
PLAN AND PROFILE
EXETER ROSE FARM
FOREST STREET & OAK STREET EXTENSION
EXETER, NEW HAMPSHIRE, COUNTY OF ROCKINGHAM
BENJAMIN & JOAN DAGOSTINO REVOCABLE TRUST
 OWNED BY
EXETER ROSE FARM, LLC & BENJAMIN & JOAN DAGOSTINO REVOCABLE TRUSTS
 SCALE: 1"=40'
 1"=80'
 AUGUST 15, 2017

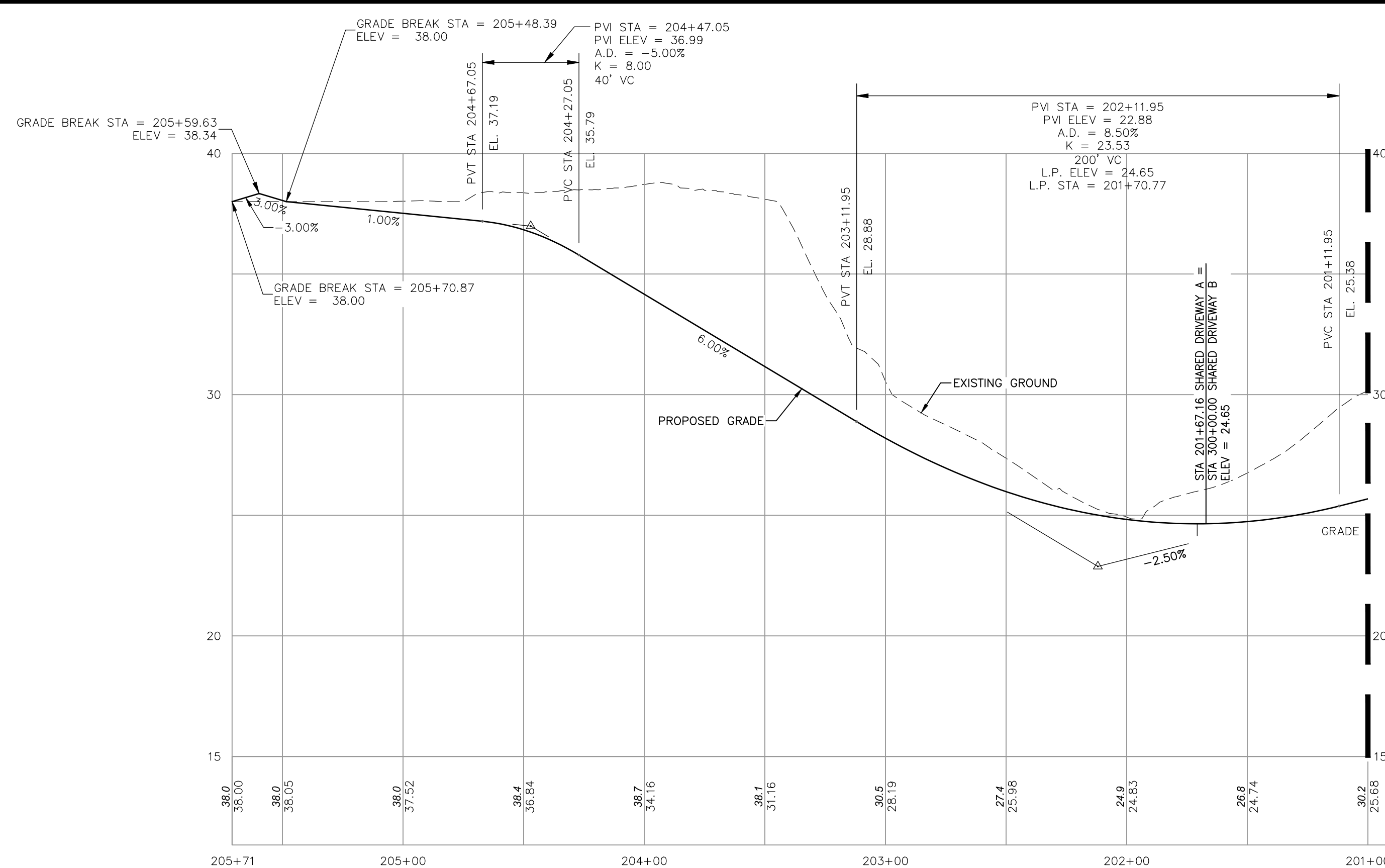
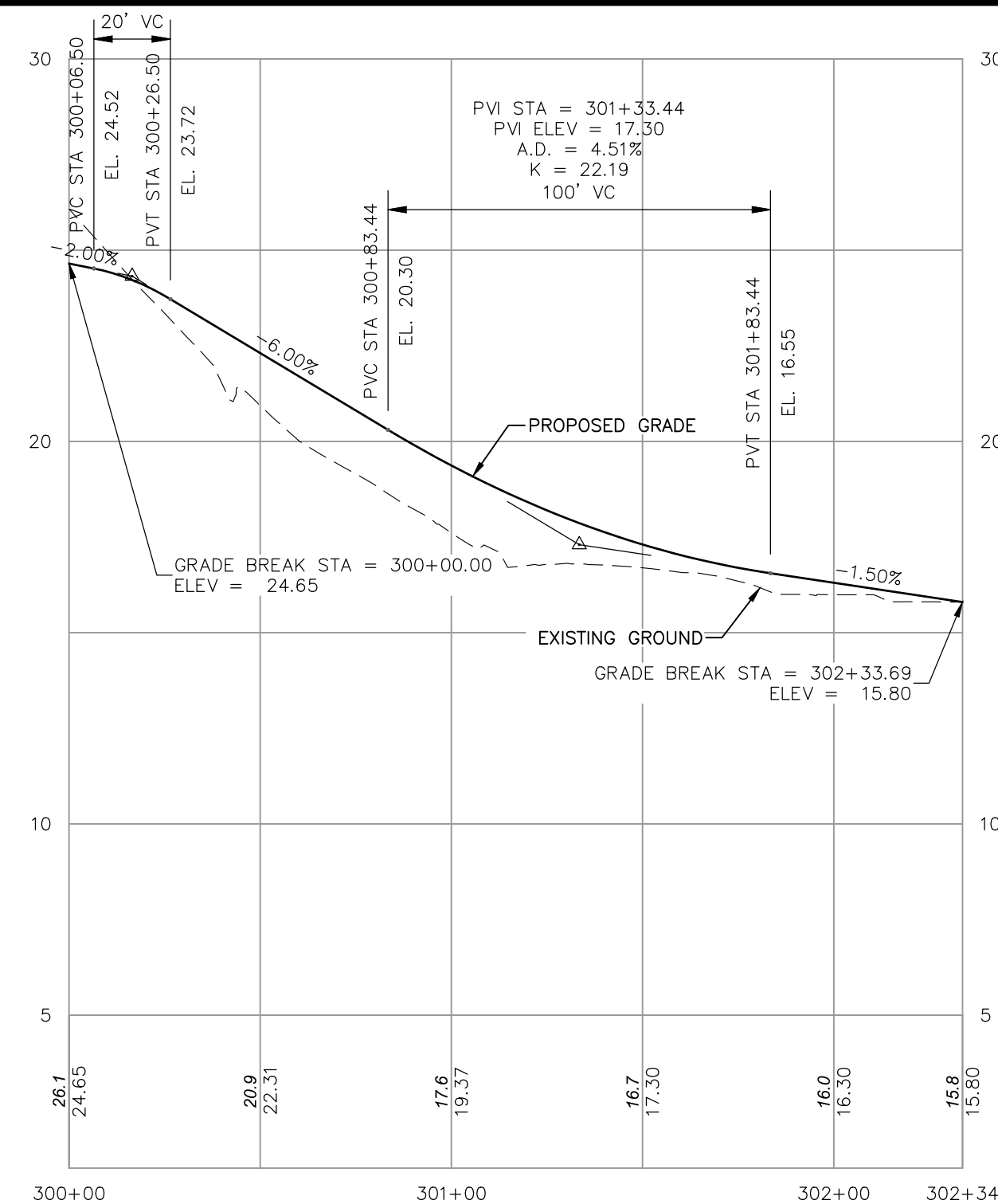


		Civil Engineers Structural Engineers Traffic Engineers Land Surveyors Landscape Architects Scientists	170 Commerce Way, Suite 102 Portsmouth, NH 03801 Phone (603) 431-2222 Fax (603) 431-0910 www.tfmoran.com
		DR ETP FB CK JJM CAD/LE	47175-00_Plan-Profile.dwg C-29



ALIGNMENT LINE DATA		
LINE NO.	BEARING	LENGTH
L11	N87°28'56"W	5.00'
L12	N50°30'51"W	100.85'
L13	N61°03'49"W	106.68'
L14	N72°10'46"W	57.38'
L15	S20°19'30"W	29.40'
L16	S10°46'41"W	28.50'

ALIGNMENT CURVE DATA			
LINE NO.	RADIUS	LENGTH	DELTA
C8	200.00'	129.04'	36°58'05"
C9	200.00'	36.82'	10°32'58"
C10	65.00'	12.61'	11°06'56"
C11	150.00'	75.26'	28°44'48"
C12	300.00'	100.53'	19°11'58"



MATCHLINE STA 201+00 - C-28

PLANNING BOARD FILE #17-27

SHARED DRIVE B

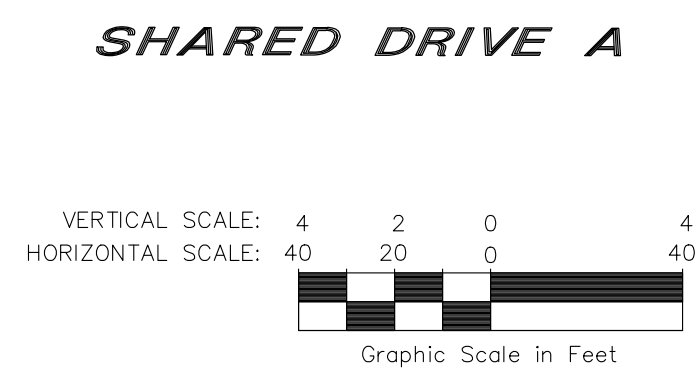
APPROVED BY THE EXETER PLANNING BOARD

ON _____ AND
 CHAIRMAN: _____
 SECRETARY: _____



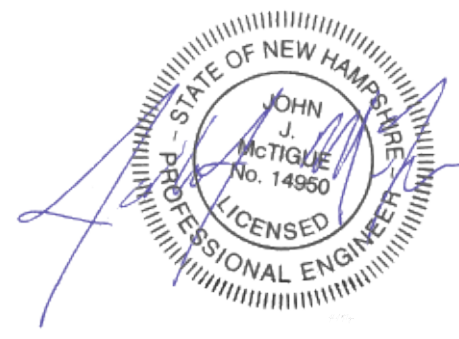
Copyright 2021 © Thomas F. Moran, Inc.
 48 Constitution Drive, Bedford, N.H. 03110
 All rights reserved. These plans and materials may not be copied, duplicated, replicated or otherwise reproduced in any form whatsoever without the prior written permission of Thomas F. Moran, Inc.
 This plan is not effective unless signed by a duly authorized officer of Thomas F. Moran, Inc.

CONTACT DIG SAFE 72 BUSINESS HOURS PRIOR TO CONSTRUCTION



REV.	DATE	DESCRIPTION	DR	CK
9	2/09/21	REVISED PER AOT SUBMITTAL	JUM	
8	11/26/18	REVISED PER PLANNING BOARD COMMENTS	ETP	JUM
7	11/05/18	REVISED PER PLANNING BOARD COMMENTS	ETP	JUM
6	10/01/18	REVISED PER PLANNING BOARD COMMENTS	ETP	JUM
5	8/31/18	REVISED PER TRC COMMENTS	ETP	JUM
4	7/10/18	REVISED PER PLANNING BOARD COMMENTS	ETP	JUM
3	2/20/18	REVISED PER REVIEW COMMENTS	ETP	JUM
2	10/31/17	REVISED PER DESIGN REVIEW COMMENTS	ETP	JUM
1	9/26/17	REVISED PER TRC COMMENTS	ETP	JUM

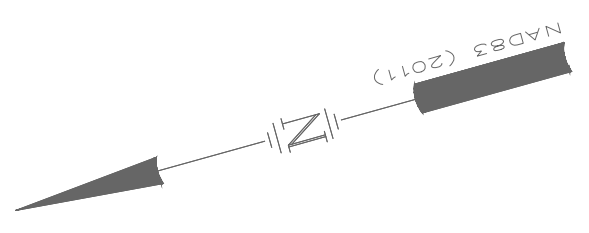
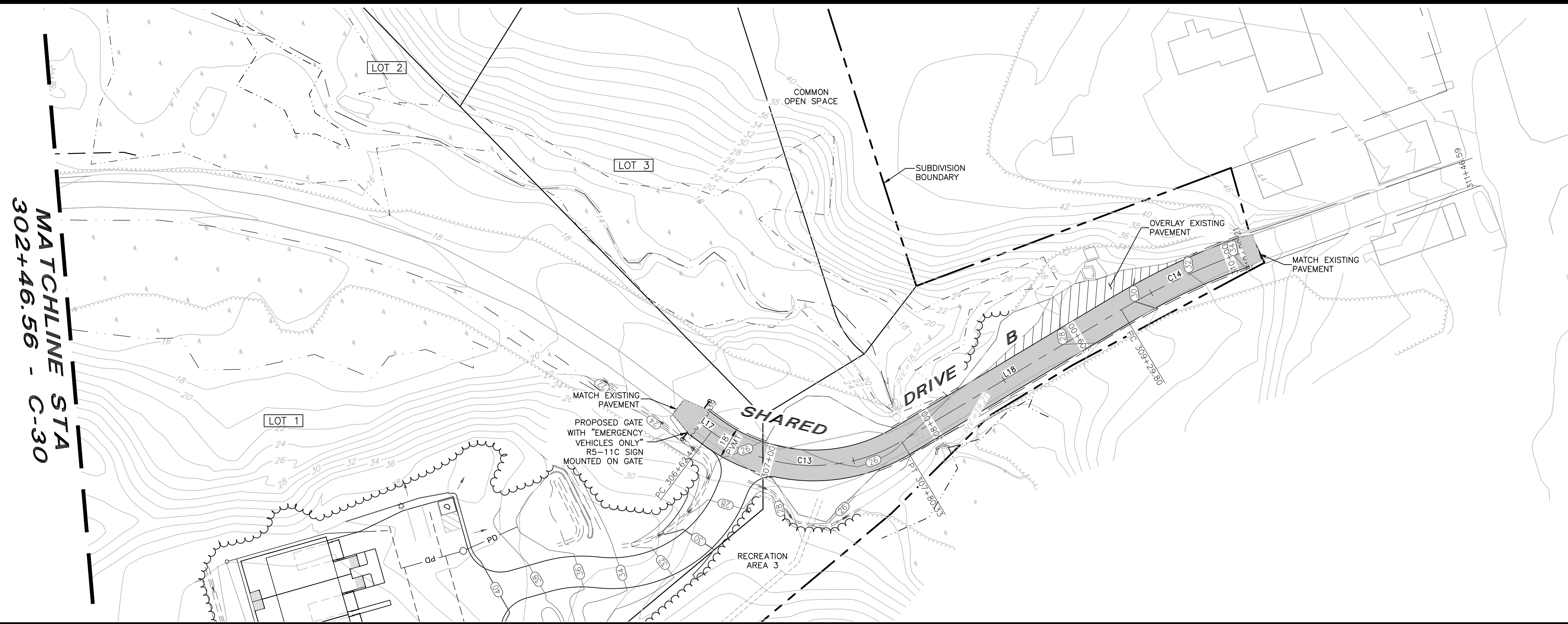
TAX MAP 54 LOTS 5, 6 & 7 TAX MAP 63 LOT 205
PLAN AND PROFILE
EXETER ROSE FARM
FOREST STREET & OAK STREET EXTENSION
EXETER, NEW HAMPSHIRE, COUNTY OF ROCKINGHAM
BENJAMIN & JOAN DAGOSTINO REVOCABLE TRUST
 OWNED BY
EXETER ROSE FARM, LLC & BENJAMIN & JOAN DAGOSTINO REVOCABLE TRUSTS
 SCALE: 1"=40'
 1"=80'
 AUGUST 15, 2017



		Civil Engineers	170 Commerce Way, Suite 102
		Structural Engineers	Portsmouth, NH 03801
		Traffic Engineers	Phone (603) 431-2222
		Land Surveyors	Fax (603) 431-0910
		Landscape Architects	www.tfmoran.com
		Scientists	

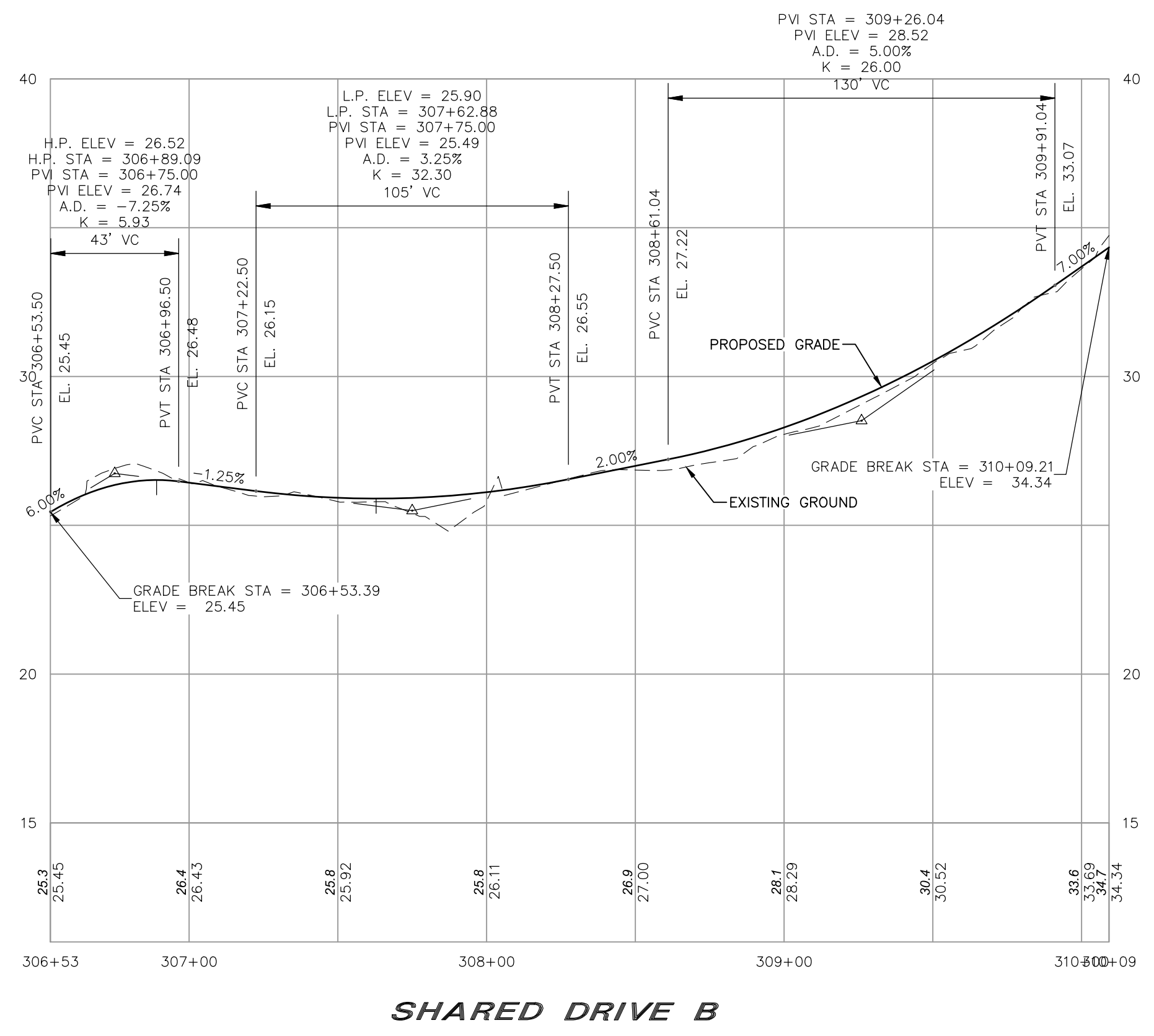
Sep 10, 2021 - 4:49pm F:\MSC Projects\47175 - Oak Street Extension - Exeter\47175-00 - Baker Properties\47175-00_C3D\Design\Production Drawings\Open Space\47175-00_C26-31_Plan-Profile.dwg

Sep 10, 2021 - 4:50pm
 F:\MSC Projects\47175 - Oak Street Extension - Exeter\47175-00 - Baker Properties\47175-00_C3D\Design\Production Drawings\Open Space\47175-00_C-26-31_Plan-Profile.dwg



ALIGNMENT LINE DATA		
LINE NO.	BEARING	LENGTH
L17	S52°12'59"W	9.05'
L18	S15°19'30"E	149.48'

ALIGNMENT CURVE DATA			
LINE NO.	RADIUS	LENGTH	DELTA
C13	100.00'	117.88'	67°32'29"
C14	400.00'	79.40'	117°22'24"



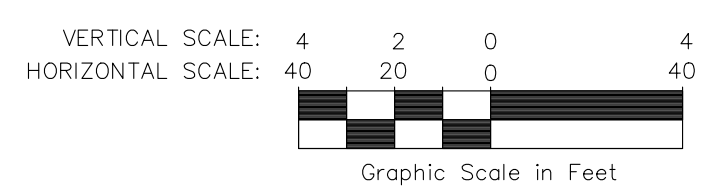
PLANNING BOARD FILE #17-27

APPROVED BY THE EXETER PLANNING BOARD

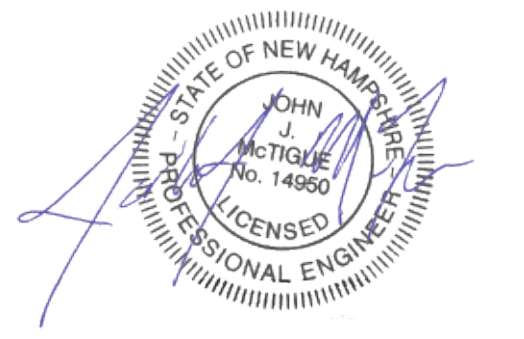
ON _____
 CHAIRMAN: _____ AND
 SECRETARY: _____



Copyright 2021 © Thomas F. Moran, Inc.
 48 Constitution Drive, Bedford, N.H. 03110
 All rights reserved. These plans and materials may not be copied, duplicated, replicated or otherwise reproduced in any form whatsoever without the prior written permission of Thomas F. Moran, Inc.
 This plan is not effective unless signed by a duly authorized officer of Thomas F. Moran, Inc.
 CONTACT DIG SAFE 72 BUSINESS HOURS PRIOR TO CONSTRUCTION



REV.	DATE	DESCRIPTION	DR	CK
3	02/09/21	REVISED PER AOT SUBMITTAL	JJM	
2	11/26/18	REVISED PER PLANNING BOARD COMMENTS	ETP	JJM
1	11/05/18	NEW SHEET	ETP	JJM



TAX MAP 54 LOTS 5, 6 & 7 TAX MAP 63 LOT 205
PLAN AND PROFILE
EXETER ROSE FARM
FOREST STREET & OAK STREET EXTENSION
EXETER, NEW HAMPSHIRE, COUNTY OF ROCKINGHAM
BENJAMIN & JOAN DAGOSTINO REVOCABLE TRUST
 OWNED BY
EXETER ROSE FARM, LLC & BENJAMIN & JOAN DAGOSTINO REVOCABLE TRUSTS
 SCALE: 1"=40'
 1"=80'
 AUGUST 15, 2017

		Civil Engineers Structural Engineers Traffic Engineers Land Surveyors Landscape Architects Scientists	170 Commerce Way, Suite 102 Portsmouth, NH 03801 Phone (603) 431-2222 Fax (603) 431-0910 www.tfmoran.com
		DR ETP FB CK JJM CADFILE	47175-00_Plan-Profile.dwg C-31