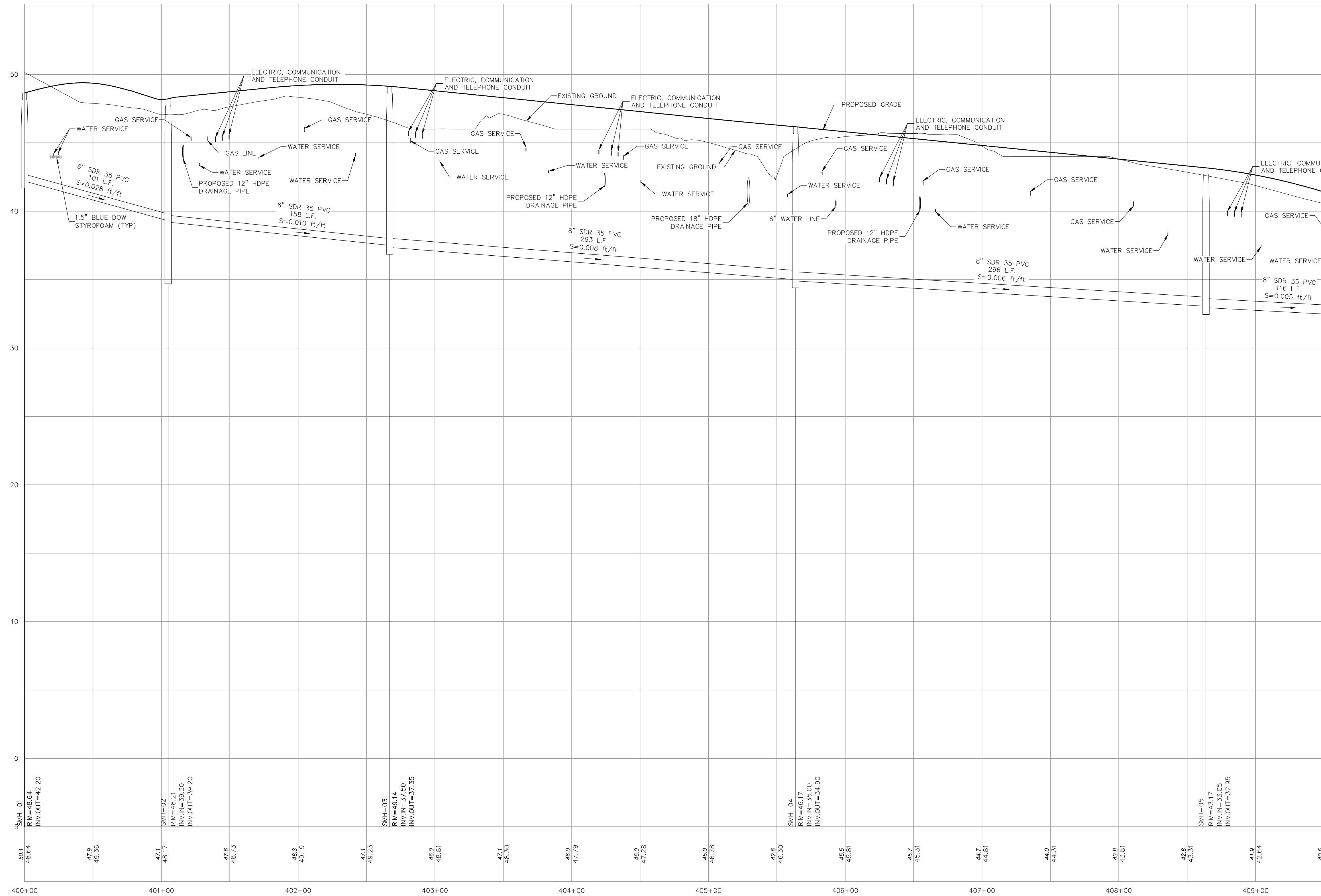


Sep 10, 2021 - 4:51pm
 F:\MSC Projects\47175 - Oak Street Extension - Exeter\47175-00 - Baker Properties\47175-00_C3D\Design\Production Drawings\Open Space\47175-00_C32-34_Sewer Profiles.dwg



MATCHLINE
STA 409+50.00 - C-33

PLANNING BOARD FILE #17-27

APPROVED BY THE EXETER PLANNING BOARD

ON _____
 CHAIRMAN: _____ AND
 SECRETARY: _____

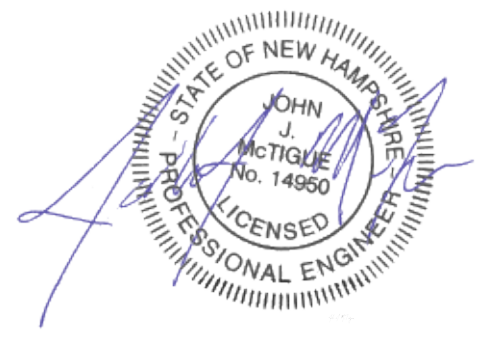
Copyright 2021 © Thomas F. Moran, Inc.
 48 Constitution Drive, Bedford, N.H. 03110

All rights reserved. These plans and materials may not be copied, duplicated, replicated or otherwise reproduced in any form whatsoever without the prior written permission of Thomas F. Moran, Inc.
 This plan is not effective unless signed by a duly authorized officer of Thomas F. Moran, Inc.

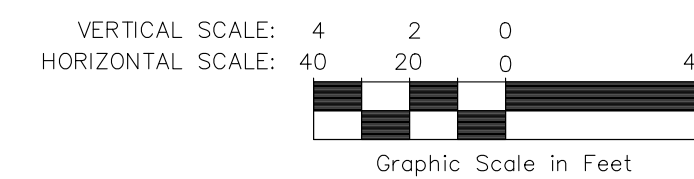


CONTACT DIG SAFE 72 BUSINESS HOURS PRIOR TO CONSTRUCTION

**SEWER LINE 1
 ROSE FARM LANE**



TAX MAP 54 LOTS 5, 6 & 7 TAX MAP 63 LOT 205
SEWER PROFILES
EXETER ROSE FARM
FOREST STREET & OAK STREET EXTENSION
EXETER, NEW HAMPSHIRE, COUNTY OF ROCKINGHAM
BENJAMIN & JOAN DAGOSTINO REVOCABLE TRUST
 OWNED BY
**EXETER ROSE FARM, LLC &
 BENJAMIN & JOAN DAGOSTINO REVOCABLE TRUSTS**
 SCALE: 1"=40'
 1"=80' AUGUST 15, 2017



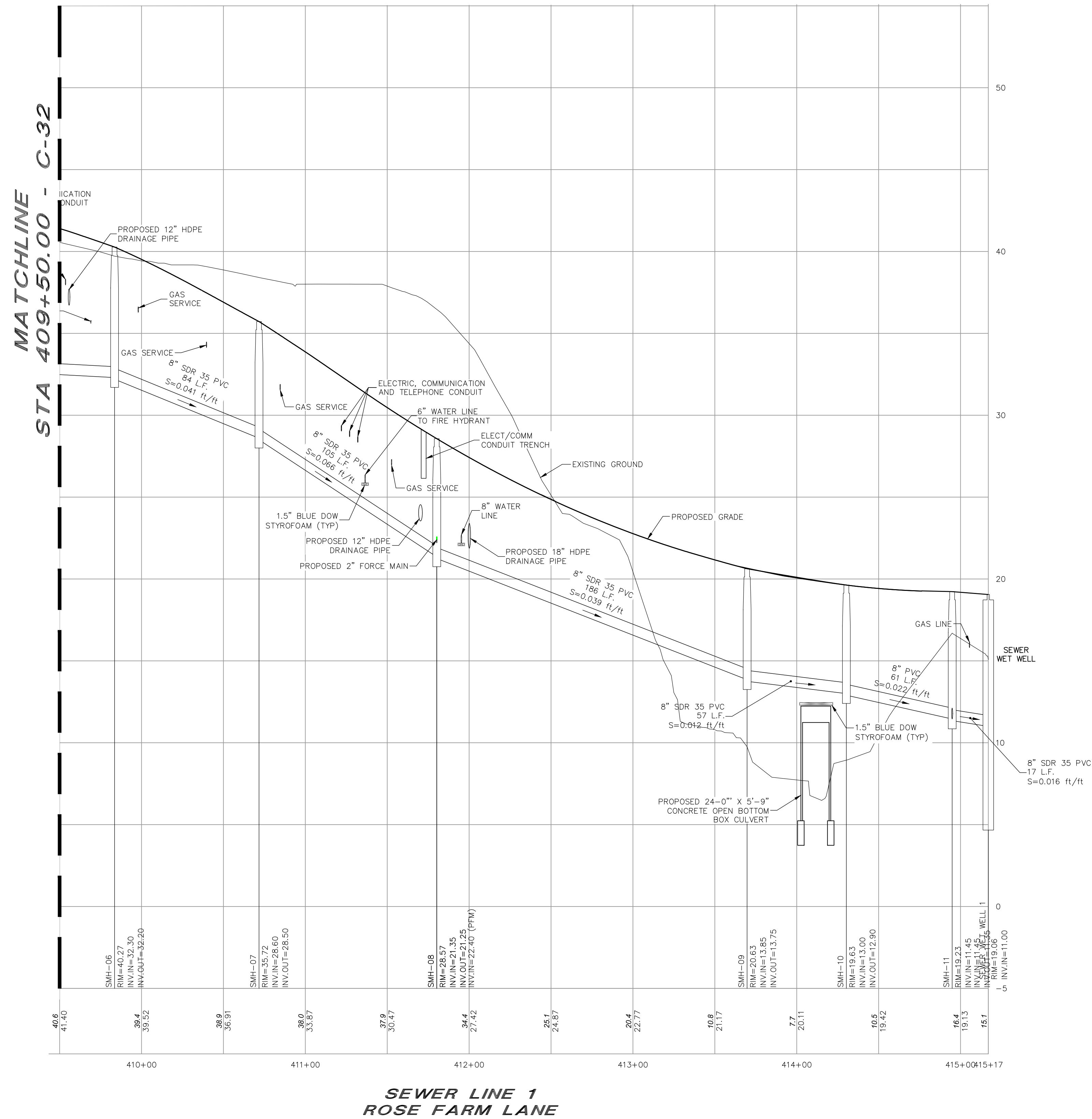
REV.	DATE	DESCRIPTION	DR	CK
8	11/26/18	REVISED PER PLANNING BOARD COMMENTS	ETP	JJM
7	11/05/18	REVISED PER PLANNING BOARD COMMENTS	ETP	JJM
6	10/01/18	REVISED PER PLANNING BOARD COMMENTS	ETP	JJM
5	8/31/18	REVISED PER TRC COMMENTS	ETP	JJM
4	7/10/18	REVISED PER PLANNING BOARD COMMENTS	ETP	JJM
3	2/20/18	REVISED PER REVIEW COMMENTS	ETP	JJM
2	10/31/17	REVISED PER DESIGN REVIEW COMMENTS	ETP	JJM
1	9/26/17	ISSUED PER TRC COMMENTS	ETP	JJM



Civil Engineers
 Structural Engineers
 Traffic Engineers
 Land Surveyors
 Landscape Architects
 Scientists
 170 Commerce Way, Suite 102
 Portsmouth, NH 03801
 Phone (603) 431-2222
 Fax (603) 431-0910
 www.tfmoran.com

FILE	47175.00	DR	ETP	FB	47175-00_Sewer Profiles.dwg	C-32
CK	JJM	CADFILE				

Sep 10, 2021 - 4:51pm
 F:\MSC\Projects\47175 - Oak Street Extension - Exeter\47175-00 - Baker Properties\47175-00_C3D\Design\Production Drawings\Open Space\47175-00_C32-34_Sewer Profiles.dwg



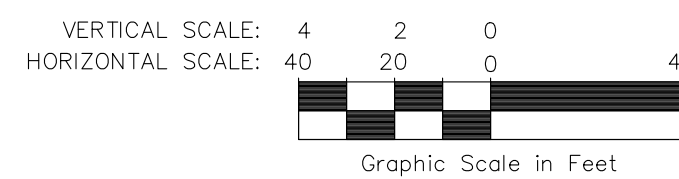
PLANNING BOARD FILE #17-27

APPROVED BY THE EXETER PLANNING BOARD
 ON _____
 CHAIRMAN: _____ AND
 SECRETARY: _____

Copyright 2021 © Thomas F. Moran, Inc.
 48 Constitution Drive, Bedford, N.H. 03110
 All rights reserved. These plans and materials may not be copied, duplicated, replicated or otherwise reproduced in any form whatsoever without the prior written permission of Thomas F. Moran, Inc.
 This plan is not effective unless signed by a duly authorized officer of Thomas F. Moran, Inc.



**SEWER LINE 1
ROSE FARM LANE**



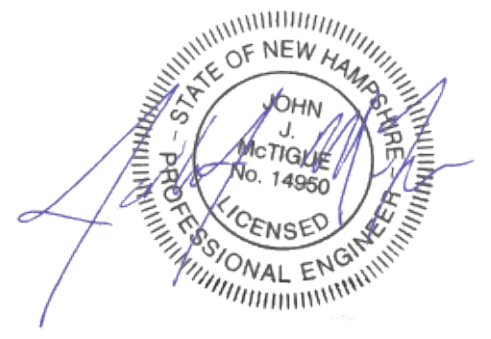
REV.	DATE	DESCRIPTION	DR	CK
8	11/26/18	REVISED PER PLANNING BOARD COMMENTS	ETP	JUM
7	11/05/18	REVISED PER PLANNING BOARD COMMENTS	ETP	JUM
6	10/01/18	REVISED PER PLANNING BOARD COMMENTS	ETP	JUM
5	8/31/18	REVISED PER TRC COMMENTS	ETP	JUM
4	7/10/18	REVISED PER PLANNING BOARD COMMENTS	ETP	JUM
3	2/20/18	REVISED PER REVIEW COMMENTS	ETP	JUM
2	10/31/17	REVISED PER DESIGN REVIEW COMMENTS	ETP	JUM
1	9/26/17	ISSUED PER TRC COMMENTS	ETP	JUM

TAX MAP 54 LOTS 5, 6 & 7 TAX MAP 63 LOT 205
SEWER PROFILES
EXETER ROSE FARM
FOREST STREET & OAK STREET EXTENSION
EXETER, NEW HAMPSHIRE, COUNTY OF ROCKINGHAM
BENJAMIN & JOAN DAGOSTINO REVOCABLE TRUST
 OWNED BY
**EXETER ROSE FARM, LLC &
 BENJAMIN & JOAN DAGOSTINO REVOCABLE TRUSTS**
 SCALE: 1"=40'
 1"=80'
 AUGUST 15, 2017

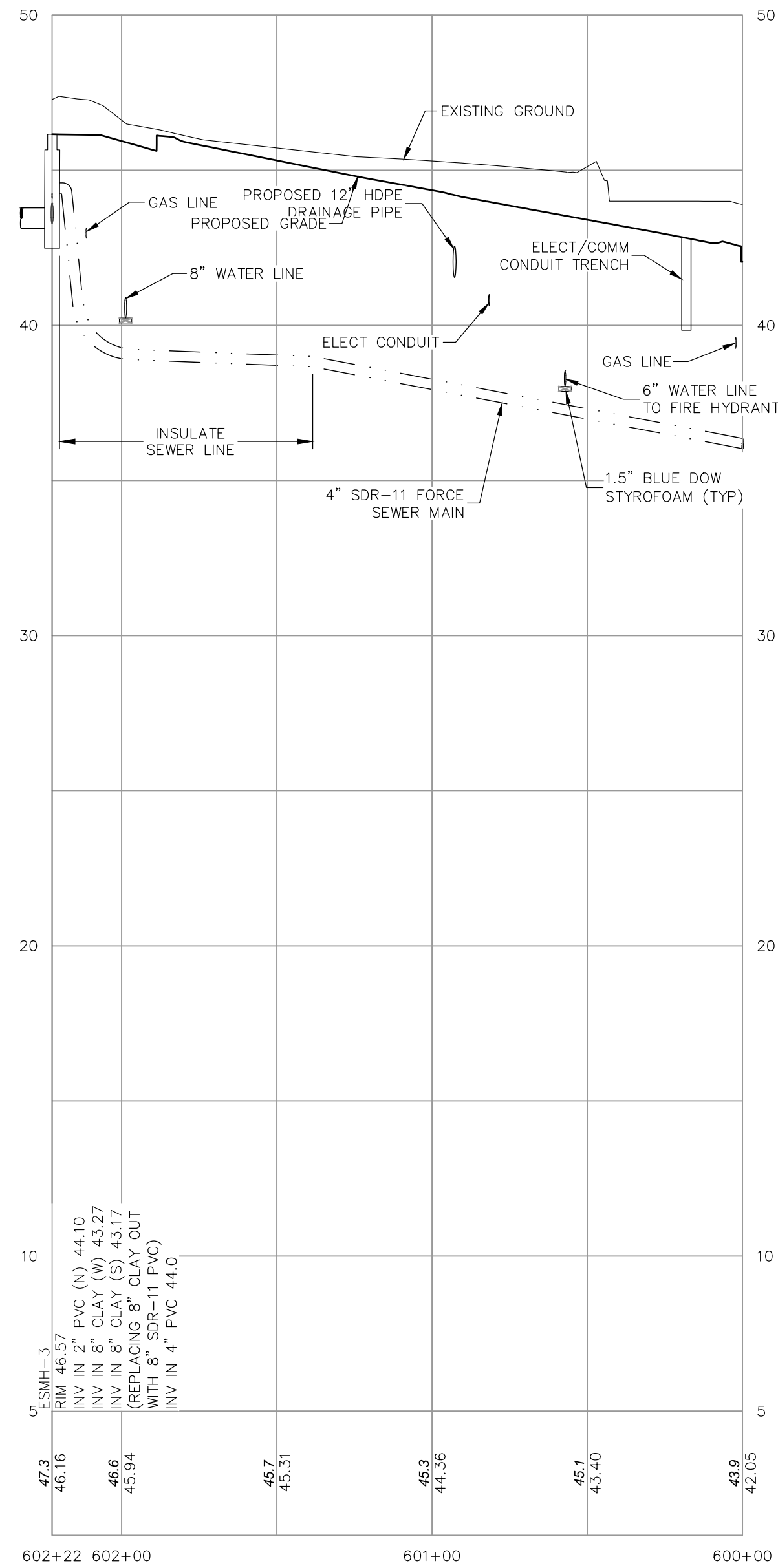


Civil Engineers
 Structural Engineers
 Traffic Engineers
 Land Surveyors
 Landscape Architects
 Scientists
 170 Commerce Way, Suite 102
 Portsmouth, NH 03801
 Phone (603) 431-2222
 Fax (603) 431-0910
 www.tfmoran.com

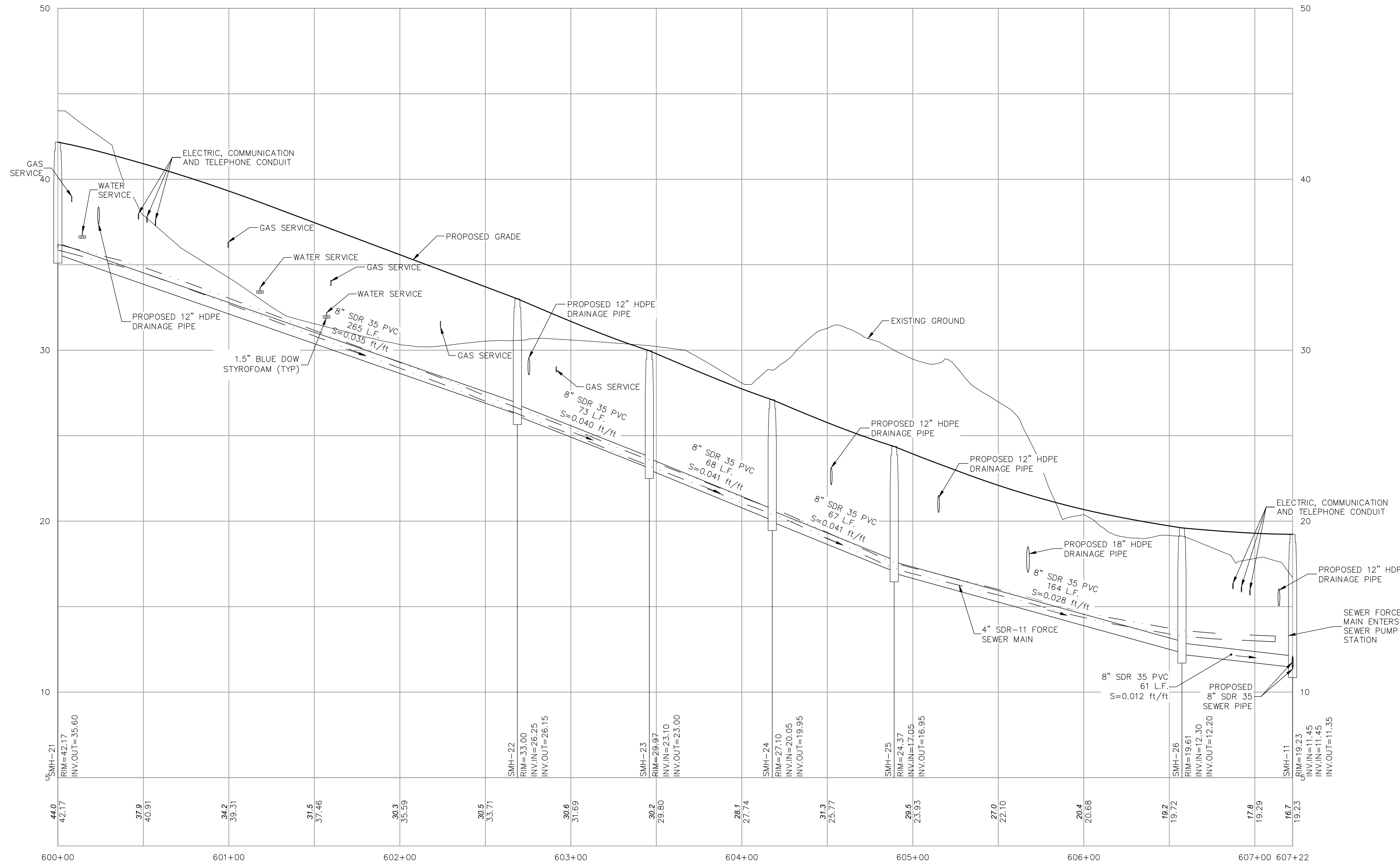
FILE	47175.00	DR	ETP	FB		
CK		JJM	CADFILE	47175-00_Sewer Profile.dwg		C-33



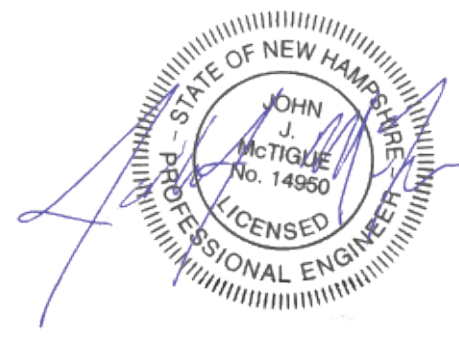
Sep 10, 2021 - 4:51pm
 F:\MSC Projects\47175 - Oak Street Extension - Exeter\47175-00 - Baker Properties\Production Drawings\Open Space\47175-00_C32-34_Sewer Profiles.dwg



**FORCE MAIN 1
ROSE FARM LANE**



**SEWER LINE 2
ROSE FARM LANE**

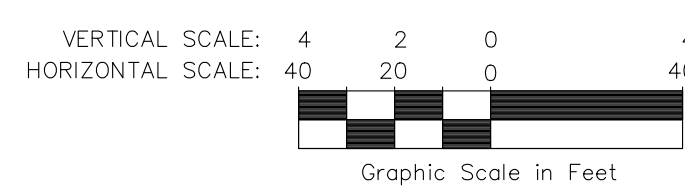


PLANNING BOARD FILE #17-27

APPROVED BY THE EXETER PLANNING BOARD
 ON _____
 CHAIRMAN: _____ AND
 SECRETARY: _____



Copyright 2021 © Thomas F. Moran, Inc.
 48 Constitution Drive, Bedford, N.H. 03110
 All rights reserved. These plans and materials may not be copied, duplicated, replicated or otherwise reproduced in any form whatsoever without the prior written permission of Thomas F. Moran, Inc.
 This plan is not effective unless signed by a duly authorized officer of Thomas F. Moran, Inc.
 CONTACT DIG SAFE 72 BUSINESS HOURS PRIOR TO CONSTRUCTION



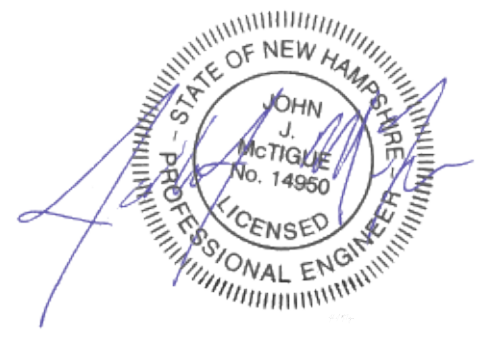
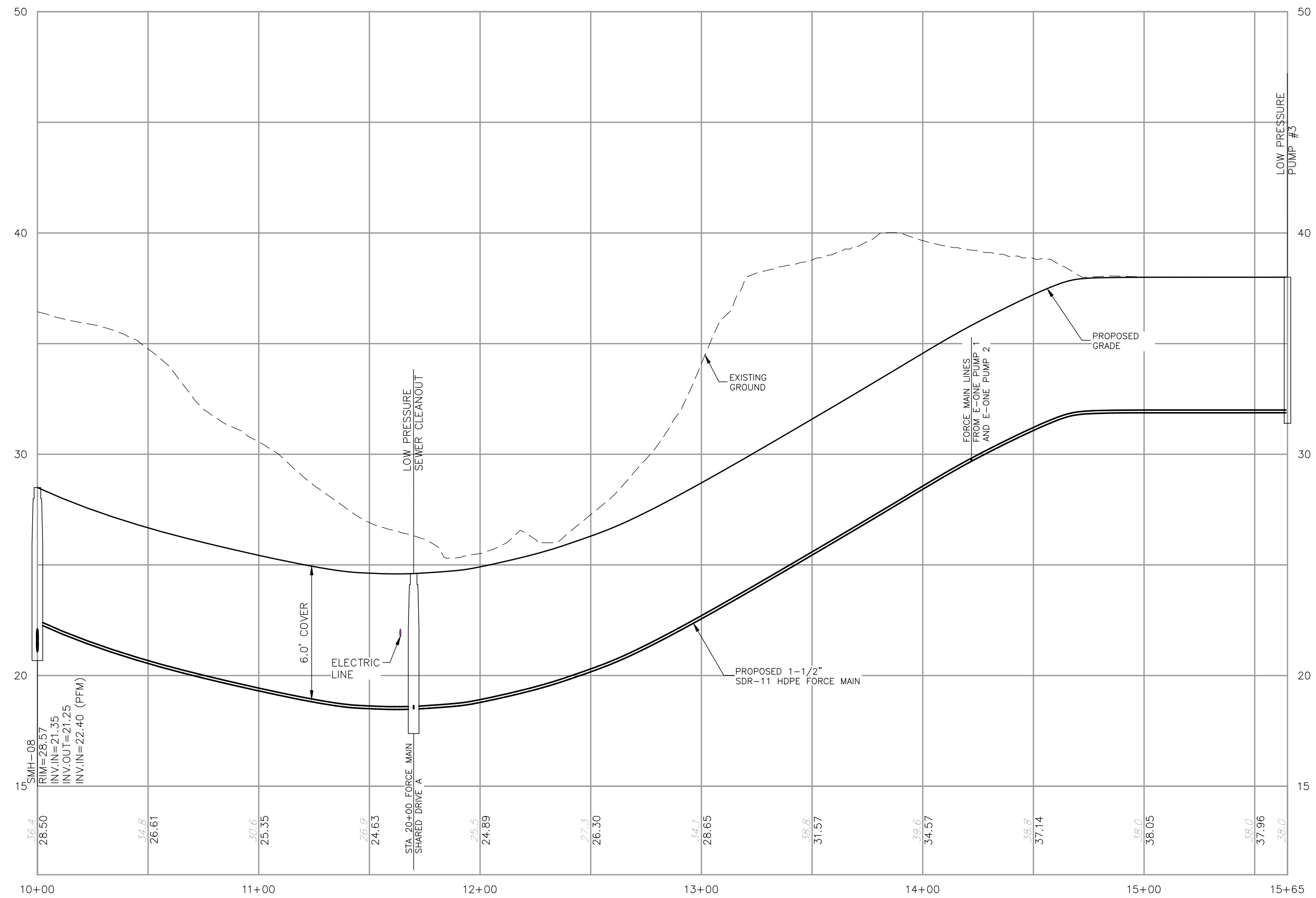
REV.	DATE	DESCRIPTION	DR	CK
8	11/26/18	REVISED PER PLANNING BOARD COMMENTS	ETP	JUM
7	11/05/18	REVISED PER PLANNING BOARD COMMENTS	ETP	JUM
6	10/01/18	REVISED PER PLANNING BOARD COMMENTS	ETP	JUM
5	8/31/18	REVISED PER TRC COMMENTS	ETP	JUM
4	7/10/18	REVISED PER PLANNING BOARD COMMENTS	ETP	JUM
3	2/20/18	REVISED PER REVIEW COMMENTS	ETP	JUM
2	10/31/17	REVISED PER DESIGN REVIEW COMMENTS	ETP	JUM
1	9/26/17	ISSUED PER TRC COMMENTS	ETP	JUM

TAX MAP 54 LOTS 5, 6 & 7 TAX MAP 63 LOT 205
SEWER PROFILES
EXETER ROSE FARM
FOREST STREET & OAK STREET EXTENSION
EXETER, NEW HAMPSHIRE, COUNTY OF ROCKINGHAM
BENJAMIN & JOAN DAGOSTINO REVOCABLE TRUST
 OWNED BY
EXETER ROSE FARM, LLC & BENJAMIN & JOAN DAGOSTINO REVOCABLE TRUSTS
 SCALE: 1"=40'
 1"=80'
 AUGUST 15, 2017

		Civil Engineers	170 Commerce Way, Suite 102
		Structural Engineers	Portsmouth, NH 03801
		Traffic Engineers	Phone (603) 431-2222
		Land Surveyors	Fax (603) 431-0910
		Landscape Architects	www.tfmoran.com
		Scientists	

47175.00 DR ETP FB 47175-00_Sewer Profiles.dwg C-34A
 CK JUM CADFILE

Sep 10, 2021 - 4:51pm
 F:\MSC\Projects\47175 - Oak Street Extension - Exeter\47175-00 - Baker Properties\47175-00_C3D\Design\Production Drawings\Open Space\47175-00_C32-34_Sewer Profiles.dwg



PLANNING BOARD FILE #17-27

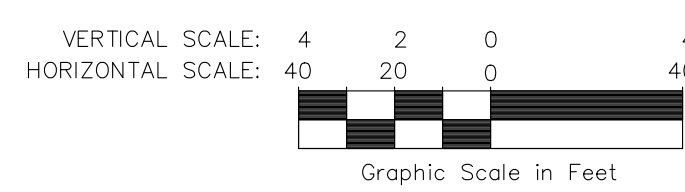
APPROVED BY THE EXETER PLANNING BOARD

ON _____
 CHAIRMAN: _____ AND
 SECRETARY: _____

Copyright 2021 © Thomas F. Moran, Inc.
 48 Constitution Drive, Bedford, N.H. 03110
 All rights reserved. These plans and materials may not be copied, duplicated, replicated or otherwise reproduced in any form whatsoever without the prior written permission of Thomas F. Moran, Inc.
 This plan is not effective unless signed by a duly authorized officer of Thomas F. Moran, Inc.



CONTACT DIG SAFE 72 BUSINESS HOURS PRIOR TO CONSTRUCTION

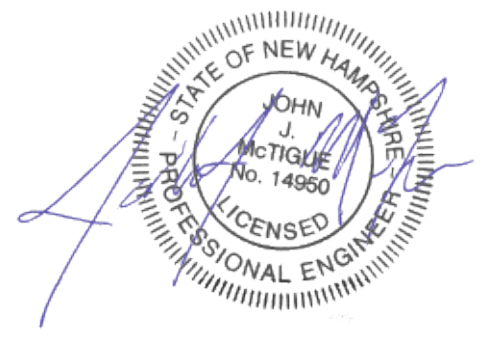
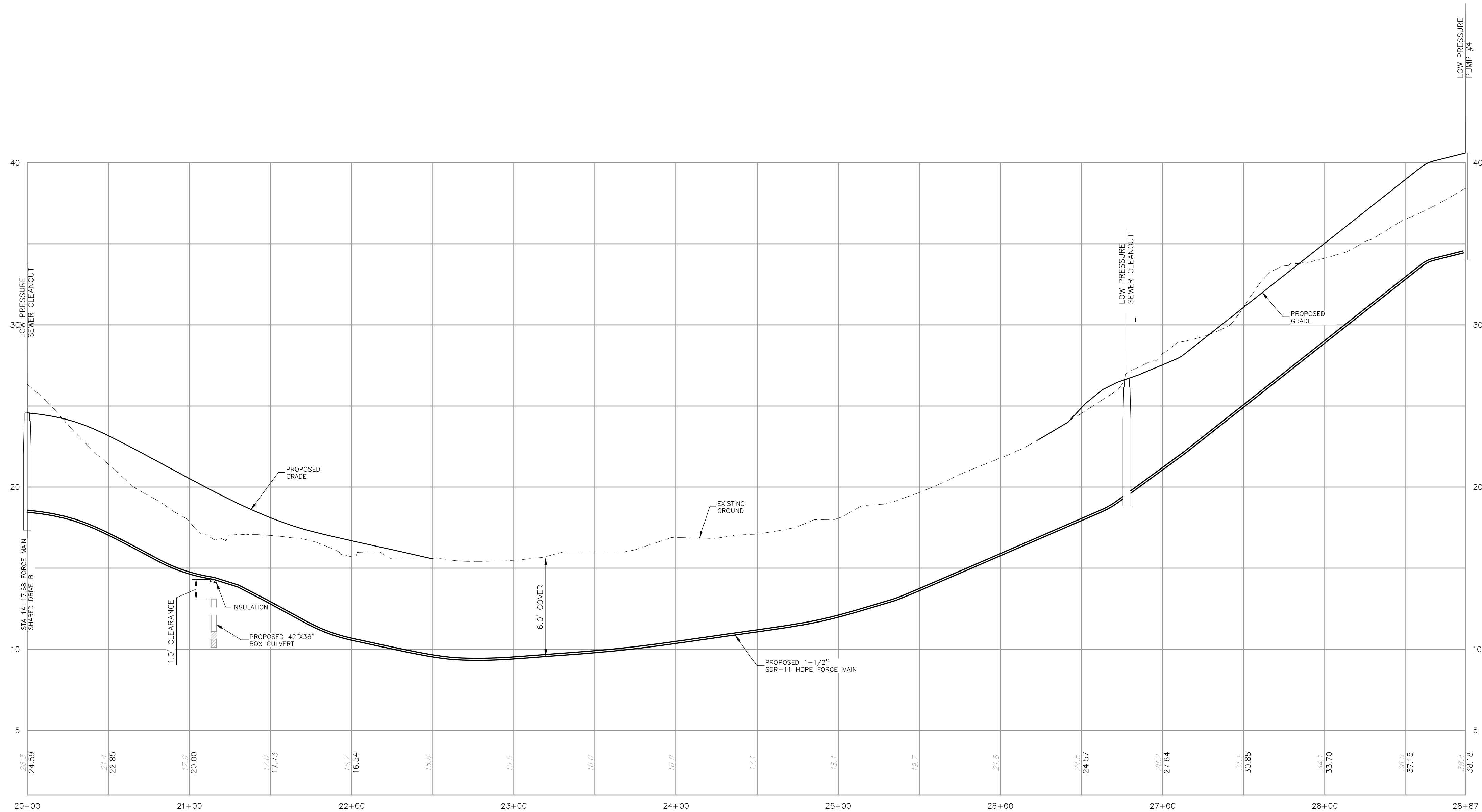


REV.	DATE	DESCRIPTION	DR	CK
1	03/09/21	NEW SHEET	JJM	

TAX MAP 54 LOTS 5, 6 & 7 TAX MAP 63 LOT 205
SEWER PROFILES
EXETER ROSE FARM
FOREST STREET & OAK STREET EXTENSION
EXETER, NEW HAMPSHIRE, COUNTY OF ROCKINGHAM
BENJAMIN & JOAN DAGOSTINO REVOCABLE TRUST
 OWNED BY
EXETER ROSE FARM, LLC & BENJAMIN & JOAN DAGOSTINO REVOCABLE TRUSTS
 SCALE: 1"=40'
 1"=80' AUGUST 15, 2017

		Civil Engineers Structural Engineers Traffic Engineers Land Surveyors Landscape Architects Scientists	170 Commerce Way, Suite 102 Portsmouth, NH 03801 Phone (603) 431-2222 Fax (603) 431-0910 www.tfmoran.com
		47175.00	DR ETP FB CK JJM CADFILE

Sep 10, 2021 - 4:51pm
 F:\MSC Projects\47175 - Oak Street Extension - Exeter\47175-00 - Baker Properties\Production Drawings\Open Space\47175-00_C32-34_Sewer Profiles.dwg



PLANNING BOARD FILE #17-27

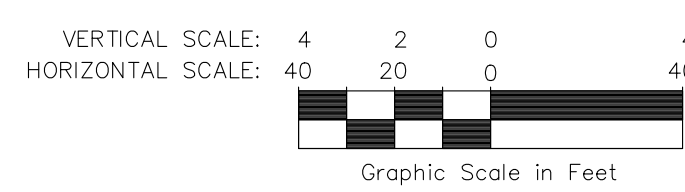
APPROVED BY THE EXETER PLANNING BOARD

ON _____
 CHAIRMAN: _____ AND
 SECRETARY: _____

Copyright 2021 © Thomas F. Moran, Inc.
 48 Constitution Drive, Bedford, N.H. 03110
 All rights reserved. These plans and materials may not be copied, duplicated, replicated or otherwise reproduced in any form whatsoever without the prior written permission of Thomas F. Moran, Inc.
 This plan is not effective unless signed by a duly authorized officer of Thomas F. Moran, Inc.



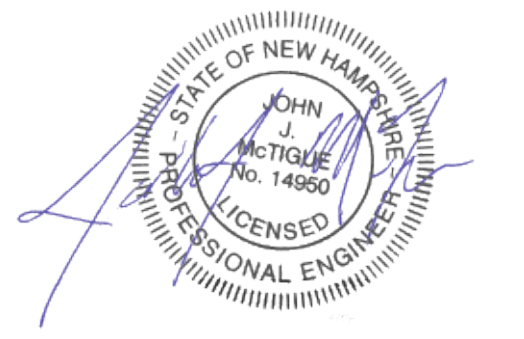
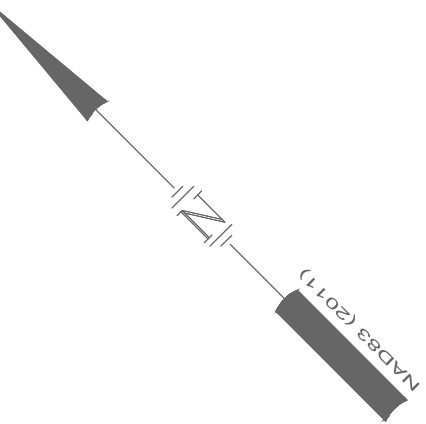
CONTACT DIG SAFE 72 BUSINESS HOURS PRIOR TO CONSTRUCTION



REV.	DATE	DESCRIPTION	DR	CK
1	03/09/21	NEW SHEET	JJM	

TAX MAP 54 LOTS 5, 6 & 7 TAX MAP 63 LOT 205
SEWER PROFILES
EXETER ROSE FARM
FOREST STREET & OAK STREET EXTENSION
EXETER, NEW HAMPSHIRE, COUNTY OF ROCKINGHAM
BENJAMIN & JOAN DAGOSTINO REVOCABLE TRUST
 OWNED BY
EXETER ROSE FARM, LLC & BENJAMIN & JOAN DAGOSTINO REVOCABLE TRUSTS
 SCALE: 1"=40'
 1"=80' AUGUST 15, 2017

		Civil Engineers Structural Engineers Traffic Engineers Land Surveyors Landscape Architects Scientists	170 Commerce Way, Suite 102 Portsmouth, NH 03801 Phone (603) 431-2222 Fax (603) 431-0910 www.tfmoran.com
		47175.00 DR ETP FB CK JJM CADFILE	47175-00_Sewer Profile.dwg C-34C



TAX MAP 54 LOTS 5, 6 & 7 TAX MAP 63 LOT 205
OVERALL UTILITY PLAN
EXETER ROSE FARM
FOREST STREET & OAK STREET EXTENSION
EXETER, NEW HAMPSHIRE, COUNTY OF ROCKINGHAM
BENJAMIN & JOAN DAGOSTINO REVOCABLE TRUST
 OWNED BY
EXETER ROSE FARM, LLC &
BENJAMIN & JOAN DAGOSTINO REVOCABLE TRUSTS
 SCALE: 1"=100'
 1"=200' AUGUST 15, 2017

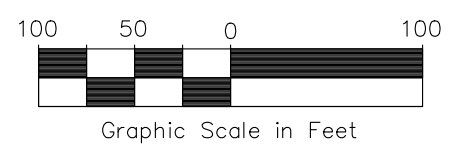
PLANNING BOARD FILE #17-27

APPROVED BY THE EXETER PLANNING BOARD

ON _____
 CHAIRMAN: _____ AND
 SECRETARY: _____



Copyright 2021 © Thomas F. Moran, Inc.
 48 Constitution Drive, Bedford, N.H. 03110
 All rights reserved. These plans and materials may not be copied, duplicated, replicated or otherwise reproduced in any form whatsoever without the prior written permission of Thomas F. Moran, Inc.
 This plan is not effective unless signed by a duly authorized officer of Thomas F. Moran, Inc.
 CONTACT DIG SAFE 72 BUSINESS HOURS PRIOR TO CONSTRUCTION



REV.	DATE	DESCRIPTION	DR	CK
4	11/26/18	REVISED PER PLANNING BOARD COMMENTS	ETP	JJM
3	11/05/18	REVISED PER PLANNING BOARD COMMENTS	ETP	JJM
2	10/01/18	REVISED PER PLANNING BOARD COMMENTS	ETP	JJM
1	8/31/18	NEW SHEET	ETP	JJM



Civil Engineers
 Structural Engineers
 Traffic Engineers
 Land Surveyors
 Landscape Architects
 Scientists
 170 Commerce Way, Suite 102
 Portsmouth, NH 03801
 Phone (603) 431-2222
 Fax (603) 431-0910
 www.tfmoran.com

FILE	47175.00	DR	ETP	FB	CK	JJM	CADFILE	47175-00_OverallUtility.dwg	C-35
------	----------	----	-----	----	----	-----	---------	-----------------------------	------

Sep 10, 2021 - 4:52pm
 F:\MSC Projects\47175 - Oak Street Extension - Exeter\47175.00 - Baker Properties\47175.00 - C3D\Design\Production Drawings\Open Space\47175-00_C-35_OverallUtility.dwg

Sep 10, 2021 - 4:53pm
 F:\MSC Projects\47175 - Oak Street Extension - Exeter\47175-00-C3D\Design\Production Drawings\Open Space\47175-00_C-36-38_Uilities.dwg

PLANNING BOARD FILE #17-27

APPROVED BY THE EXETER PLANNING BOARD

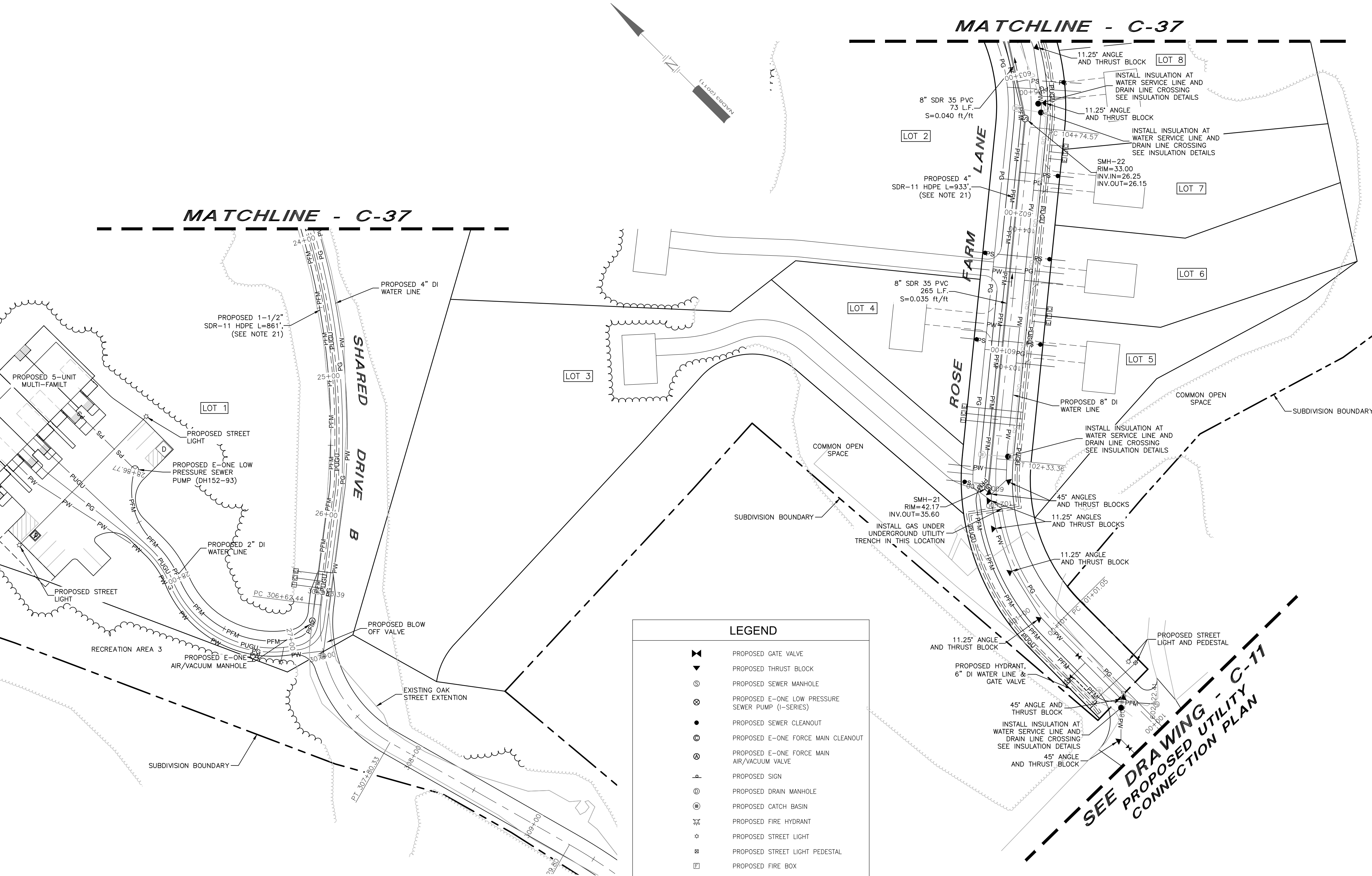
ON _____ AND
 CHAIRMAN: _____
 SECRETARY: _____

Copyright 2021 © Thomas F. Moran, Inc.
 48 Constitution Drive, Bedford, N.H. 03110

All rights reserved. These plans and materials may not be copied, duplicated, replicated or otherwise reproduced in any form whatsoever without the prior written permission of Thomas F. Moran, Inc.
 This plan is not effective unless signed by a duly authorized officer of Thomas F. Moran, Inc.



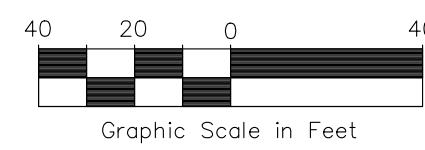
CONTACT DIG SAFE 72 BUSINESS HOURS PRIOR TO CONSTRUCTION



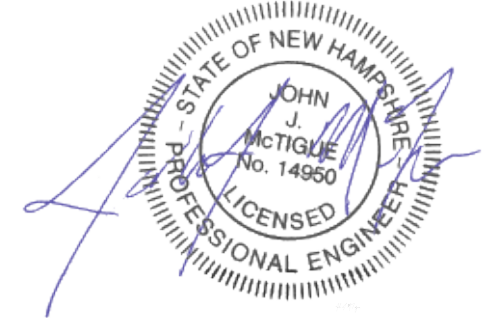
LEGEND	
	PROPOSED GATE VALVE
	PROPOSED THRUST BLOCK
	PROPOSED SEWER MANHOLE
	PROPOSED E-ONE LOW PRESSURE SEWER PUMP (I-SERIES)
	PROPOSED SEWER CLEANOUT
	PROPOSED E-ONE FORCE MAIN CLEANOUT
	PROPOSED E-ONE FORCE MAIN AIR/VACUUM VALVE
	PROPOSED SIGN
	PROPOSED DRAIN MANHOLE
	PROPOSED CATCH BASIN
	PROPOSED FIRE HYDRANT
	PROPOSED STREET LIGHT
	PROPOSED STREET LIGHT PEDESTAL
	PROPOSED FIRE BOX
	PROPOSED BLOW OFF VALVE
	PROPOSED TRANSFORMER PAD
	PROPOSED COMMUNICATION PEDESTAL
	PROPOSED ELECTRIC, TELEPHONE AND CABLE PEDESTAL
	PROPOSED UTILITY DROP POLE
	PROPOSED UNDERGROUND ELECTRIC & COMMUNICATIONS LINE
	PROPOSED OVERHEAD UTILITY LINE
	PROPOSED UNDERGROUND UTILITY TRENCH
	PROPOSED GAS LINE
	PROPOSED SEWER LINE
	PROPOSED FORCE MAIN LINE
	PROPOSED WATER LINE
	PROPERTY LINE
	SUBDIVISION BOUNDARY
	PROPOSED EASEMENT LINE

SEPARATION NOTES

- MINIMUM HORIZONTAL SEPARATION FOR UTILITIES RUNNING PARALLEL TO ELECTRIC CONDUITS SHALL BE:
 - 4- FEET FOR WATER AND SEWER LINES
 - 3- FEET FOR GAS LINES
 - 1- FOOT FOR COMMUNICATION LINES
- MINIMUM VERTICAL SEPARATION FOR UTILITIES CROSSING ELECTRIC CONDUITS SHALL BE:
 - 1- FOOT FOR WATER AND SEWER LINES
 - 3- FEET FOR GAS LINES
 - 1- FOOT FOR COMMUNICATION LINES



REV.	DATE	DESCRIPTION	DR	CK
9	02/09/21	REVISED PER AOT SUBMITTAL	JUM	JUM
8	11/26/18	REVISED PER PLANNING BOARD COMMENTS	ETP	JUM
7	11/05/18	REVISED PER PLANNING BOARD COMMENTS	ETP	JUM
6	10/01/18	REVISED PER PLANNING BOARD COMMENTS	ETP	JUM
5	8/31/18	REVISED PER TRC COMMENTS	JUM	JUM
4	7/10/18	REVISED PER PLANNING BOARD COMMENTS	ETP	JUM
3	2/20/18	REVISED PER REVIEW COMMENTS	ETP	JUM
2	10/31/17	REVISED PER DESIGN REVIEW COMMENTS	ETP	JUM
1	9/26/17	REVISED PER TRC COMMENTS	ETP	JUM



UTILITY NOTES

- ALL WORK SHALL CONFORM TO THE APPLICABLE REGULATIONS AND STANDARDS OF THE TOWN OF EXETER, AND SHALL BE BUILT IN A WORKMANLIKE MANNER IN ACCORDANCE WITH THE PLANS AND SPECIFICATIONS. COORDINATE ALL WORK WITHIN THE RIGHT-OF-WAY WITH APPROPRIATE TOWN, COUNTY AND/OR STATE AGENCY.
- ALL PROPOSED UTILITY WORK, INCLUDING MATERIAL, INSTALLATION, TERMINATION, EXCAVATION, BEDDING, BACKFILL, COMPACTION, TESTING, CONNECTIONS, AND CONSTRUCTION SHALL BE COORDINATED WITH AND COMPLETED IN ACCORDANCE WITH THE APPROPRIATE REQUIREMENTS, CODES AND STANDARDS OF ALL CORRESPONDING UTILITY ENTITIES AND SHALL BE THE RESPONSIBILITY OF THE CONTRACTOR.
- IT SHALL BE THE CONTRACTOR'S RESPONSIBILITY TO FAMILIARIZE HIMSELF WITH THE SITE AND ALL SURROUNDING CONDITIONS.
- THE CONTRACTOR IS RESPONSIBLE FOR THE MEANS AND METHODS OF CONSTRUCTION AND FOR THE CONDITIONS AT THE SITE. WRITTEN DIMENSIONS HAVE PRECEDENCE OVER SCALED DIMENSIONS. THE CONTRACTOR SHALL VERIFY ALL DIMENSIONS AND REPORT DISCREPANCIES TO THE ENGINEER.
- THE CONTRACTOR SHALL BE RESPONSIBLE FOR VERIFYING AND DETERMINING THE LOCATION, SIZE AND ELEVATION OF ALL EXISTING UTILITIES, SHOWN OR NOT SHOWN ON THESE PLANS, PRIOR TO THE START OF ANY CONSTRUCTION. THE ENGINEER SHALL BE NOTIFIED IN WRITING OF ANY UTILITIES FOUND INTERFERING WITH THE PROPOSED CONSTRUCTION AND APPROPRIATE REMEDIAL ACTION BE AGREED TO BY THE ENGINEER BEFORE PROCEEDING WITH THE WORK. THE CONTRACTOR SHALL BE RESPONSIBLE TO CONTACT "DIGSAFE" (811) AND DPW (603) 773-6157 AT LEAST 72 HOURS BEFORE DIGGING.
- THE CONTRACTOR SHALL CONTACT ALL UTILITY COMPANIES OWNING UTILITIES, EITHER OVERHEAD OR UNDERGROUND, WITHIN THE CONSTRUCTION AREA AND SHALL COORDINATE AS NECESSARY WITH THE UTILITY COMPANIES OF SAID UTILITIES. THE PROTECTION OR RELOCATION OF UTILITIES IS ULTIMATELY THE RESPONSIBILITY OF THE CONTRACTOR.
- PROVIDE PERMANENT PAVEMENT REPAIR FOR ALL UTILITY TRENCHES IN EXISTING ROAD OR PAVEMENT TO REMAIN. SAW CUT TRENCH, PAVEMENT AND GRANULAR BASE THICKNESS TO MATCH EXISTING PAVEMENT. OBTAIN ALL PERMITS REQUIRED FOR TRENCHING.
- THE CONTRACTOR SHALL PROVIDE AND INSTALL ALL MANHOLES, BOXES, FITTINGS, CONNECTORS, COVER PLATES AND OTHER MISCELLANEOUS ITEMS NOT NECESSARILY DETAILED ON THESE DRAWINGS TO RENDER THE UTILITY INSTALLATION COMPLETE AND OPERATIONAL.
- SEE EXISTING FEATURES PLAN FOR ANY KNOWN EXISTING UTILITY EASEMENTS. CONTACT ALL EASEMENT OWNERS PRIOR TO COMMENCING ANY WORK WITHIN THE EASEMENT.
- ALL UTILITY STRUCTURES IN PAVEMENT SHALL BE SET TO FINISH GRADE REGARDLESS OF ANY ELEVATIONS OTHERWISE SHOWN.
- LENGTH OF PIPE IS FOR CONVENIENCE ONLY. ACTUAL PIPE LENGTH SHALL BE DETERMINED IN THE FIELD.
- UNLESS OTHERWISE SPECIFIED, ALL UNDERGROUND STRUCTURES, PIPES, CHAMBERS, ETC. SHALL BE COVERED WITH A MINIMUM OF 18" OF COMPACTED SOIL BEFORE EXPOSURE TO VEHICLE LOADS.
- THE CONTRACTOR SHALL ARRANGE AND PAY FOR ALL INSPECTIONS, TESTING AND RELATED SERVICES AND SUBMIT COPIES OF ACCEPTANCE TO THE OWNER, UNLESS OTHERWISE INDICATED.
- NOT USED.
- SANITARY SEWER SHALL BE CONSTRUCTED TO THE STANDARDS AND SPECIFICATIONS AS SHOWN ON THESE PLANS. ALL GRAVITY SEWER MAINS AND FITTINGS SHALL BE PVC AND SHALL CONFORM TO ASTM F 679 (SDR 35 MINIMUM) UNLESS SPECIFIED. SEE CROSSING DETAILS AND PROFILES FOR ADDITIONAL SEWER LINE MATERIALS. ALL SEWER CONSTRUCTION SHALL BE IN ACCORDANCE WITH NH CODE OF ADMINISTRATIVE RULES ENV-WQ 700. SANITARY MANHOLES SHALL CONFORM TO NHDES WATER DIVISION WASTEWATER ENGINEERING BUREAU STANDARDS AND SPECIFICATIONS SHOWN HEREON.
- ON-SITE WATER DISTRIBUTION SHALL BE TO EXETER STANDARDS AND SPECIFICATIONS. WATER MAINS SHALL HAVE A MINIMUM OF 5.5 FEET COVER. WHERE WATER PIPES CROSS SEWER LINES A MINIMUM OF 18" VERTICAL SEPARATION BETWEEN THE TWO OUTSIDE PIPE WALLS SHALL BE OBSERVED. HORIZONTAL SEPARATION BETWEEN WATER AND SEWER SHALL BE 10 FEET MINIMUM.
- THE GENERAL CONTRACTOR IS RESPONSIBLE FOR CONDUIT AND WIRING TO ALL SIGNS AND LIGHTS. CONDUIT TO BE A MINIMUM OF 24" BELOW FINISH GRADE.
- ALL PROPOSED UTILITIES SHALL BE UNDERGROUND. ALL UNDERGROUND CONDUITS SHALL HAVE NYLON PULL ROPES.
- ALL UTILITY COMPANIES REQUIRE INDIVIDUAL CONDUITS. CONTRACTOR TO COORDINATE WITH TELEPHONE, CABLE AND ELECTRIC COMPANIES REGARDING NUMBER, SIZE AND TYPE OF CONDUITS REQUIRED PRIOR TO INSTALLATION OF ANY CONDUIT.
- THE PROPERTY WILL BE SERVICED BY THE FOLLOWING:

DRAINAGE	PRIVATE
SEWER	TOWN OF EXETER
WATER	TOWN OF EXETER
GAS	UNITIL
ELECTRIC	UNITIL ELECTRIC
TELEPHONE	CONSOLIDATED COMMUNICATIONS
CABLE	COMCAST
EXETER FIRE DEPARTMENT	
- ALL SEWER FORCE MAINS SHALL BE CONSTRUCTED OF SDR-11 AND SHALL CONFORM TO ASTM D3035 PER ENV-WQ 704.08 (D).
- ALL WATER SERVICES TO HAVE CURB STOP INSTALLED BETWEEN THE BACK OF CURB AND THE EDGE OF R.O.W.
- PLANS TO BE ACCEPTED BY UNITIL PRIOR TO SIGNING BY EXETER PLANNING BOARD.

TAX MAP 54 LOTS 5, 6 & 7 TAX MAP 63 LOT 205

UTILITY PLAN

EXETER ROSE FARM

FOREST STREET & OAK STREET EXTENSION

EXETER, NEW HAMPSHIRE, COUNTY OF ROCKINGHAM

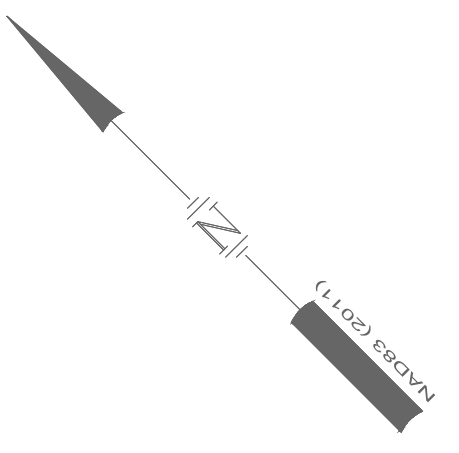
BENJAMIN & JOAN DAGOSTINO REVOCABLE TRUST

OWNED BY

EXETER ROSE FARM, LLC & BENJAMIN & JOAN DAGOSTINO REVOCABLE TRUSTS

SCALE: 1"=40' 1"=80' **AUGUST 15, 2017**

TFM	Civil Engineers Structural Engineers Traffic Engineers Land Surveyors Landscape Architects Scientists	170 Commerce Way, Suite 102 Portsmouth, NH 03801 Phone (603) 431-2222 Fax (603) 431-0910 www.tfmoran.com
		47175.00
DR: ETP CK: JUM	FB: CADFILE	47175-00_Uilities.dwg
		C-36



MATCHLINE - C-38

MATCHLINE - C-36

MATCHLINE - C-36

PLANNING BOARD FILE #17-27

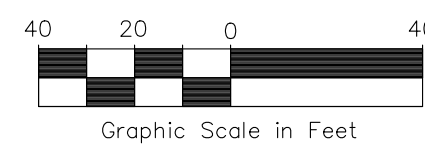
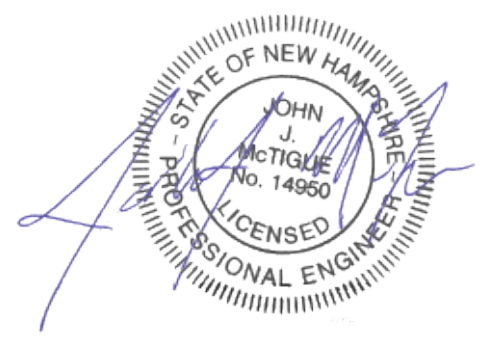
APPROVED BY THE EXETER PLANNING BOARD

ON _____ AND
CHAIRMAN: _____
SECRETARY: _____

Copyright 2021 © Thomas F. Moran, Inc.
48 Constitution Drive, Bedford, N.H. 03110
All rights reserved. These plans and materials may not be copied, duplicated, replicated or otherwise reproduced in any form whatsoever without the prior written permission of Thomas F. Moran, Inc.
This plan is not effective unless signed by a duly authorized officer of Thomas F. Moran, Inc.



CONTACT DIG SAFE 72 BUSINESS HOURS PRIOR TO CONSTRUCTION



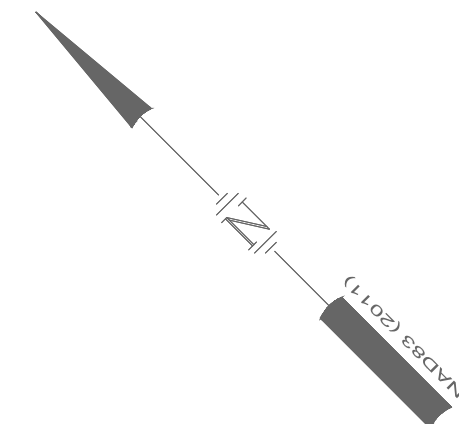
REV.	DATE	DESCRIPTION	DR	CK
9	02/09/21	REVISED PER AOT SUBMITTAL	JUM	
8	11/26/18	REVISED PER PLANNING BOARD COMMENTS	ETP	JUM
7	11/05/18	REVISED PER PLANNING BOARD COMMENTS	ETP	JUM
6	10/01/18	REVISED PER PLANNING BOARD COMMENTS	ETP	JUM
5	8/31/18	REVISED PER TRC COMMENTS	JUM	JUM
4	7/10/18	REVISED PER PLANNING BOARD COMMENTS	ETP	JUM
3	2/20/18	REVISED PER REVIEW COMMENTS	ETP	JUM
2	10/31/17	REVISED PER DESIGN REVIEW COMMENTS	ETP	JUM
1	9/26/17	REVISED PER TRC COMMENTS	ETP	JUM

TAX MAP 54 LOTS 5, 6 & 7 TAX MAP 63 LOT 205
UTILITY PLAN
EXETER ROSE FARM
FOREST STREET & OAK STREET EXTENSION
EXETER, NEW HAMPSHIRE, COUNTY OF ROCKINGHAM
BENJAMIN & JOAN DAGOSTINO REVOCABLE TRUST
 OWNED BY
EXETER ROSE FARM, LLC & BENJAMIN & JOAN DAGOSTINO REVOCABLE TRUSTS
 SCALE: 1"=40'
 1"=80'
 AUGUST 15, 2017

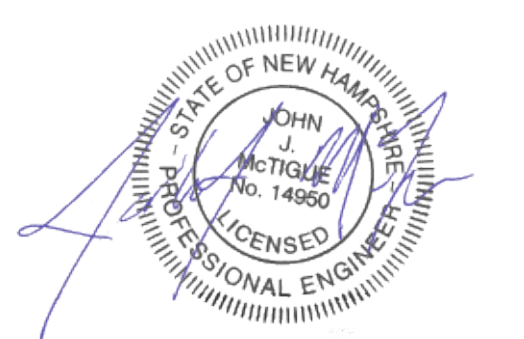
		Civil Engineers	170 Commerce Way, Suite 102
		Structural Engineers	Portsmouth, NH 03801
		Traffic Engineers	Phone (603) 431-2222
		Land Surveyors	Fax (603) 431-0910
		Landscape Architects	www.tfmoran.com
		Scientists	

47175.00 DR ETP FB
 CK JUM CADFILE 47175-00_Uilities.dwg C-37

Sep 10, 2021 - 4:53pm F:\MSC\Projects\47175 - Oak Street Extension - Exeter\47175-00_C3D\Design\Production Drawings\Open Space\47175-00_C-36-38_Uilities.dwg



MATCHLINE - C-37

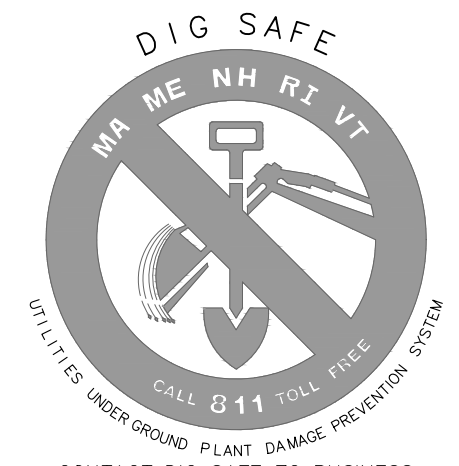


TAX MAP 54 LOTS 5, 6 & 7 TAX MAP 63 LOT 205
UTILITY PLAN
EXETER ROSE FARM
FOREST STREET & OAK STREET EXTENSION
EXETER, NEW HAMPSHIRE, COUNTY OF ROCKINGHAM
BENJAMIN & JOAN DAGOSTINO REVOCABLE TRUST
 OWNED BY
EXETER ROSE FARM, LLC &
BENJAMIN & JOAN DAGOSTINO REVOCABLE TRUSTS
 SCALE: 1"=40'
 1"=80' AUGUST 15, 2017

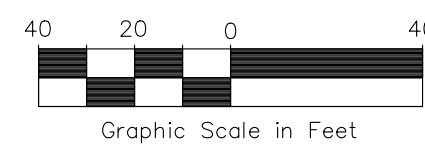
PLANNING BOARD FILE #17-27

APPROVED BY THE EXETER PLANNING BOARD

ON _____ AND
 CHAIRMAN: _____ SECRETARY: _____



Copyright 2021 © Thomas F. Moran, Inc.
 48 Constitution Drive, Bedford, N.H. 03110
 All rights reserved. These plans and materials may not be copied, duplicated, replicated or otherwise reproduced in any form whatsoever without the prior written permission of Thomas F. Moran, Inc.
 This plan is not effective unless signed by a duly authorized officer of Thomas F. Moran, Inc.
 CONTACT DIG SAFE 72 BUSINESS HOURS PRIOR TO CONSTRUCTION



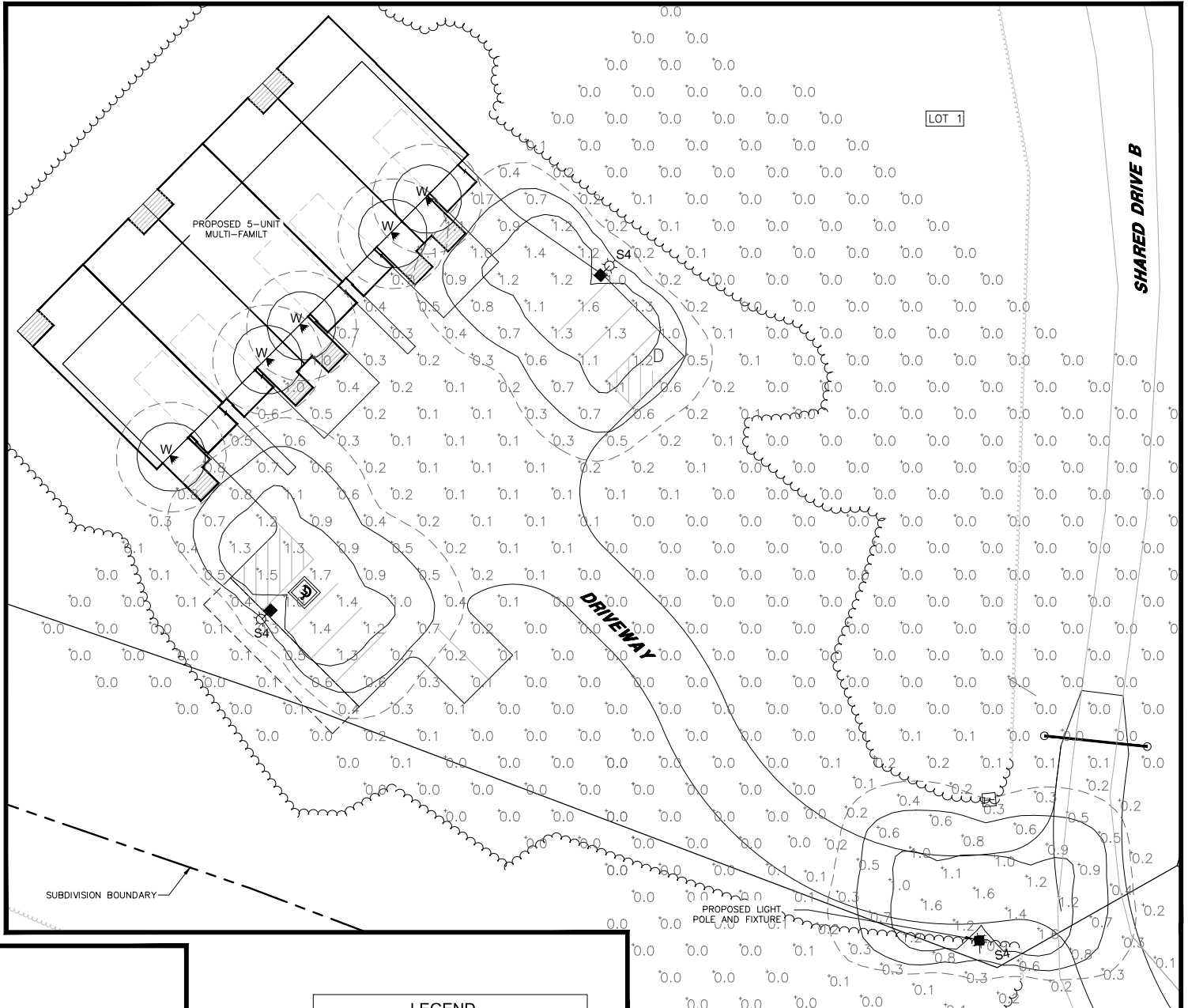
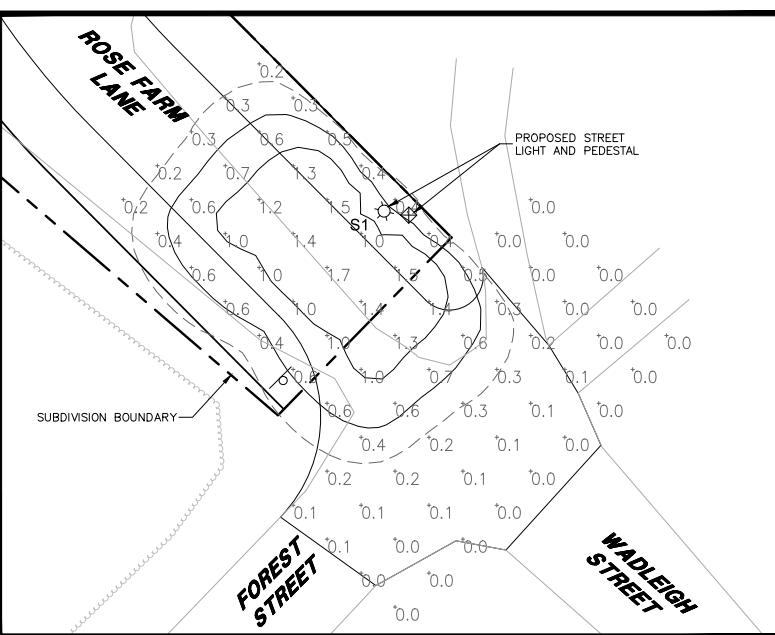
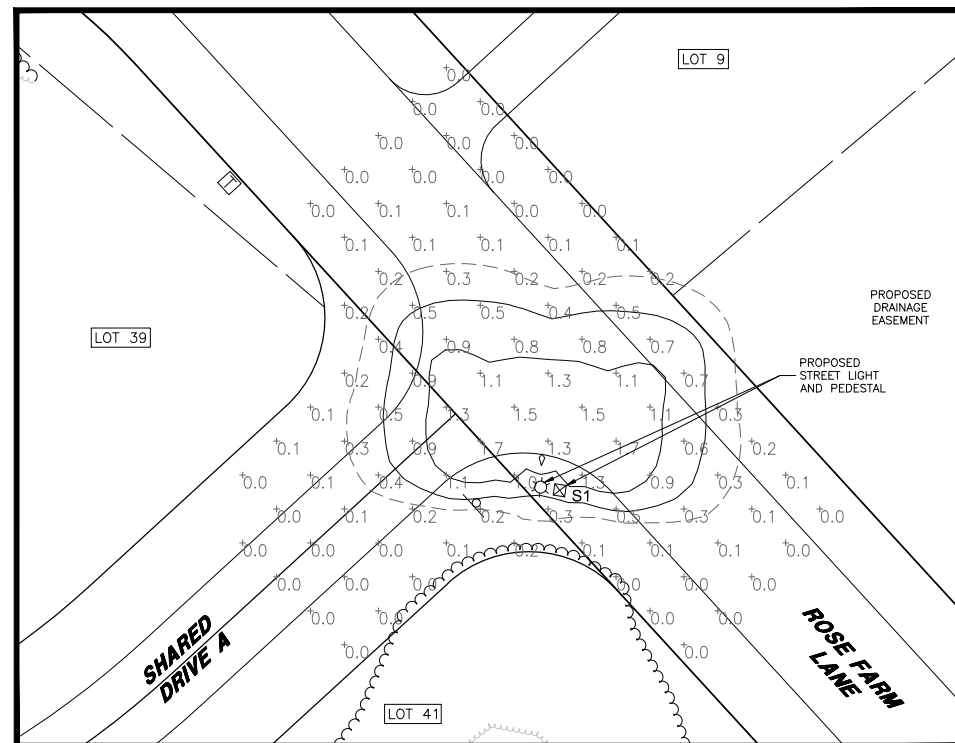
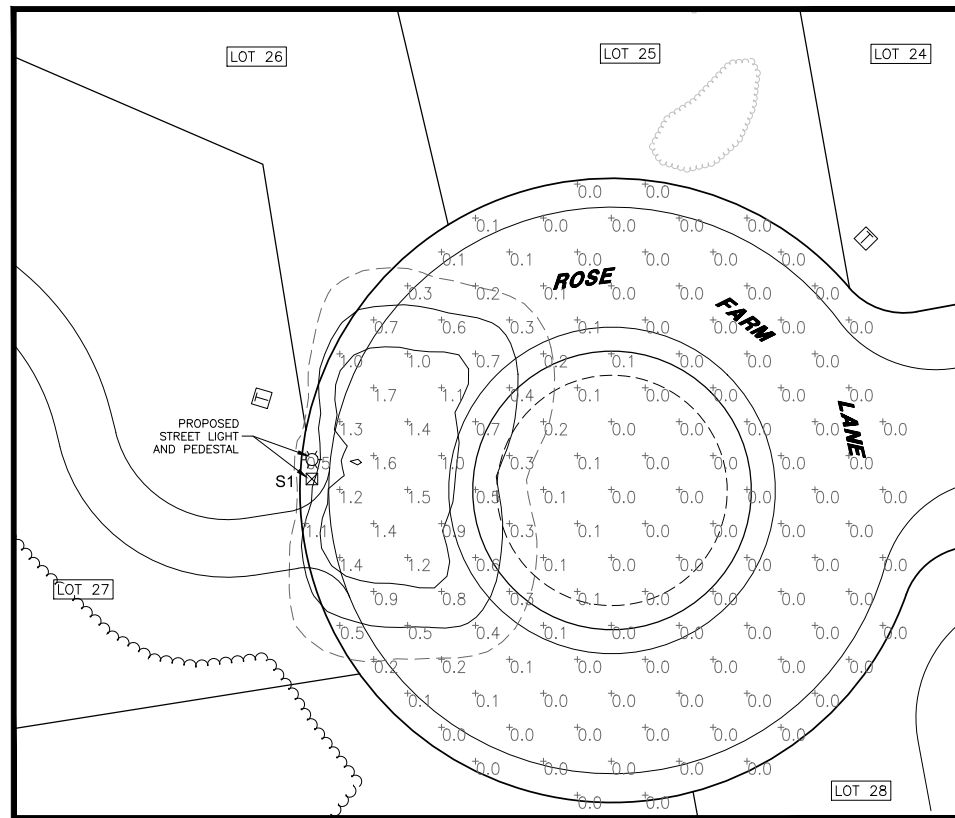
REV.	DATE	DESCRIPTION	DR	CK
9	02/09/21	REVISED PER AOT SUBMITTAL	JUM	
8	11/26/18	REVISED PER PLANNING BOARD COMMENTS	ETP	JUM
7	11/05/18	REVISED PER PLANNING BOARD COMMENTS	ETP	JUM
6	10/01/18	REVISED PER PLANNING BOARD COMMENTS	ETP	JUM
5	8/31/18	REVISED PER TRC COMMENTS	JUM	JUM
4	7/10/18	REVISED PER PLANNING BOARD COMMENTS	ETP	JUM
3	2/20/18	REVISED PER REVIEW COMMENTS	ETP	JUM
2	10/31/17	REVISED PER DESIGN REVIEW COMMENTS	ETP	JUM
1	9/26/17	REVISED PER TRC COMMENTS	ETP	JUM



Civil Engineers
 Structural Engineers
 Traffic Engineers
 Land Surveyors
 Landscape Architects
 Scientists
 170 Commerce Way, Suite 102
 Portsmouth, NH 03801
 Phone (603) 431-2222
 Fax (603) 431-0910
 www.tfmoran.com

FILE: 47175.00
 DR: ETP
 CK: JUM
 FB: CADFILE
 47175-00_Utillities.dwg
 C-38

Sep 10, 2021 - 4:53pm F:\MSC Projects\47175 - Oak Street Extension - Exeter\47175-00 - Baker Properties\47175-00_C3D\Design\Production Drawings\Open Space\47175-00_C-36-38_Utillities.dwg



LEGEND

- PROPOSED SIGN
- ☆ PROPOSED STREET LIGHT
- ◀ PROPOSED BUILDING MOUNTED LIGHT
- ⊠ PROPOSED STREET LIGHT PEDESTAL
- PROPOSED TRANSFORMER PAD
- PROPERTY LINE

LUMINAIRE SCHEDULE

SYMBOL	LBL	QTY	ARRANGEMENT	DESCRIPTION
☆	S1	3	SINGLE	SI02-VLED-IV-48LED-NW-525-PT-RAL9005T-HS/RTA-1443-125-PT27-RAL9005S (14' POLE)
☆	S4	3	SINGLE	SI02-VLED-IV-64LED-NW-350-HS (14' POLE)
◀	W	5	SINGLE	66411 / WALL MTD ABOVE DOORS

TAX MAP 54 LOTS 5, 6 & 7 TAX MAP 63 LOT 205
LIGHTING PLAN
EXETER ROSE FARM
FOREST STREET & OAK STREET EXTENSION
EXETER, NEW HAMPSHIRE, COUNTY OF ROCKINGHAM
BENJAMIN & JOAN DAGOSTINO REVOCABLE TRUST
 OWNED BY
EXETER ROSE FARM, LLC & BENJAMIN & JOAN DAGOSTINO REVOCABLE TRUSTS
 SCALE: 1"=20'
 1"=40'
 AUGUST 15, 2017

PLANNING BOARD FILE #17-27

APPROVED BY THE EXETER PLANNING BOARD

ON _____ AND
 CHAIRMAN: _____ SECRETARY: _____

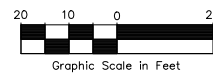
Copyright 2021 © Thomas F. Moran, Inc.
 48 Constitution Drive, Bedford, N.H. 03110
 All rights reserved. These plans and materials may not be copied, duplicated, replicated or otherwise reproduced in any form whatsoever without the prior written permission of Thomas F. Moran, Inc.
 This plan is not effective unless signed by a duly authorized officer of Thomas F. Moran, Inc.



WALL MOUNT FIXTURE (W)
 BEGA LIGHTING

LIGHTING NOTES

- ALL FIXTURES SHALL BE LED FIXTURES MEETING FULL CUT-OFF, DARK-SKY COMPLIANCE.
- LIGHTING DESIGN, CALCULATIONS AND PHOTOMETRICS PROVIDED BY CHARRON, INC.



REV.	DATE	DESCRIPTION	DR	CK
5	02/09/21	REVISE PER AOT SUBMITTAL	JJM	
4	11/26/18	REVISED PER PLANNING BOARD COMMENTS	ETP	JJM
3	11/05/18	REVISED PER PLANNING BOARD COMMENTS	ETP	JJM
2	10/29/18	REVISED PER PLANNING BOARD COMMENTS	JRW	BMK
1	8/31/18	NEW SHEET	JRW	JJM

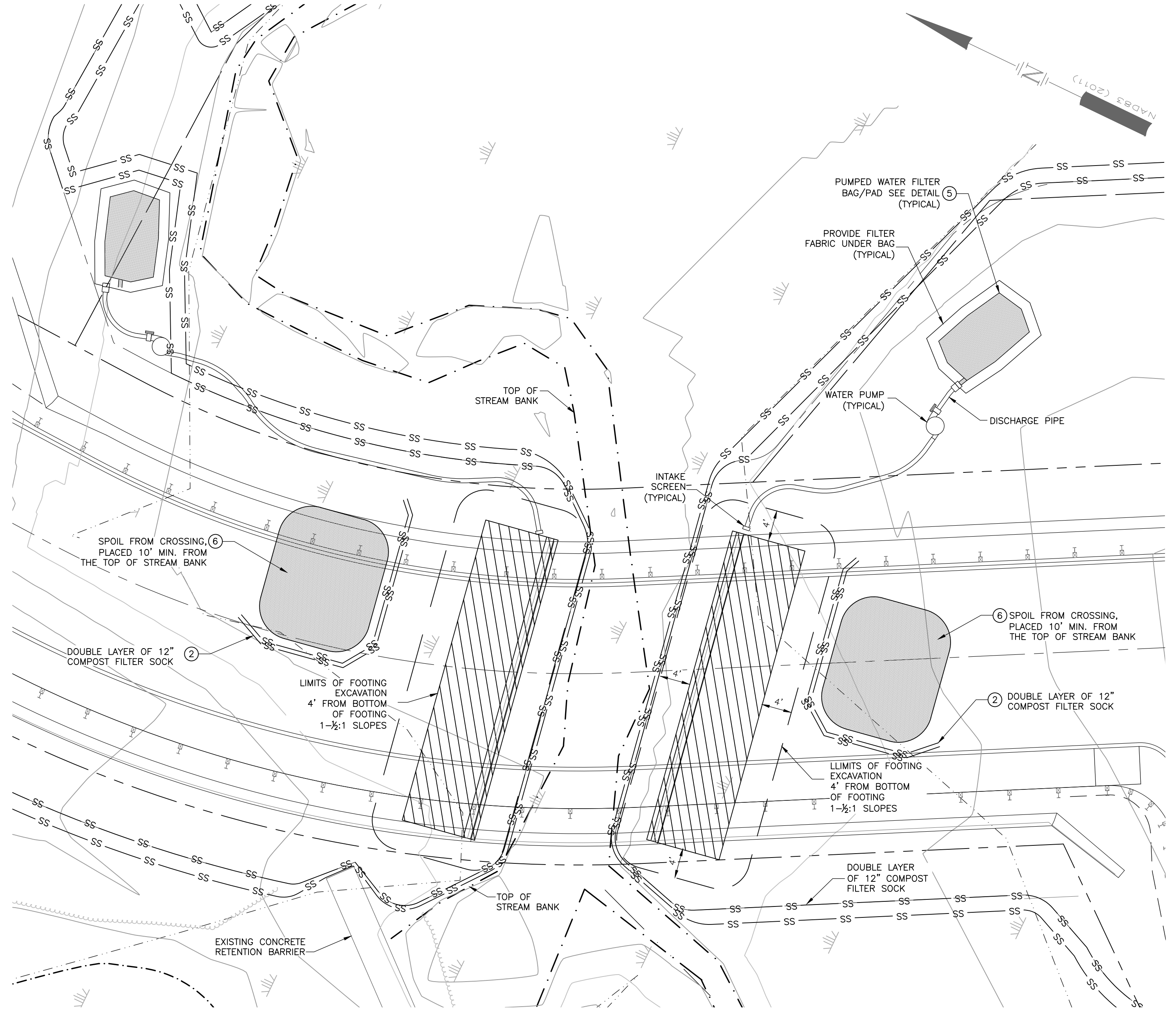


Civil Engineers
 Structural Engineers
 Traffic Engineers
 Land Surveyors
 Landscape Architects
 Scientists

170 Commerce Way, Suite 102
 Portsmouth, NH 03801
 Phone (603) 431-2222
 Fax (603) 431-0910
 www.tfmoran.com

FILE	47175.00	DR	ETP	FB		
CK	JJM	CADFILE	47175-00_Lighting.dwg			C-39

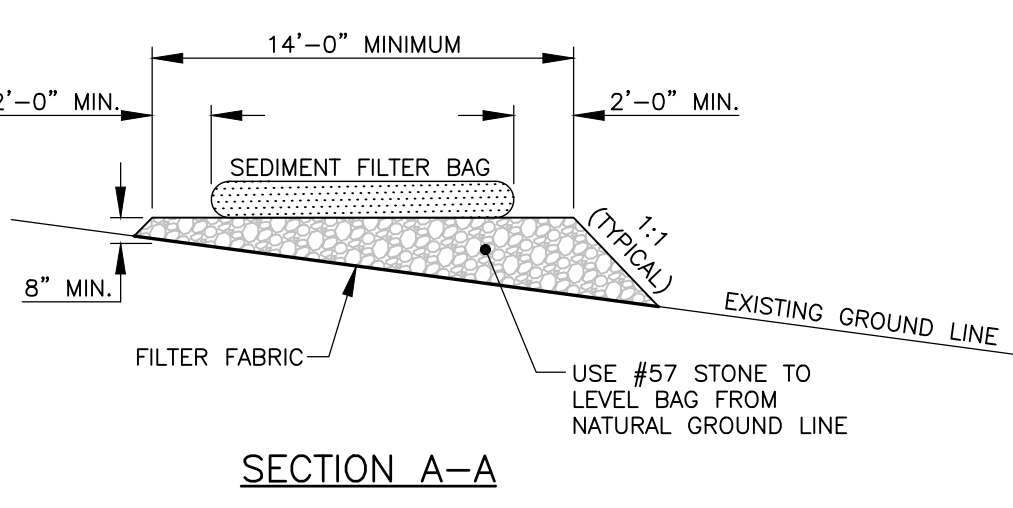
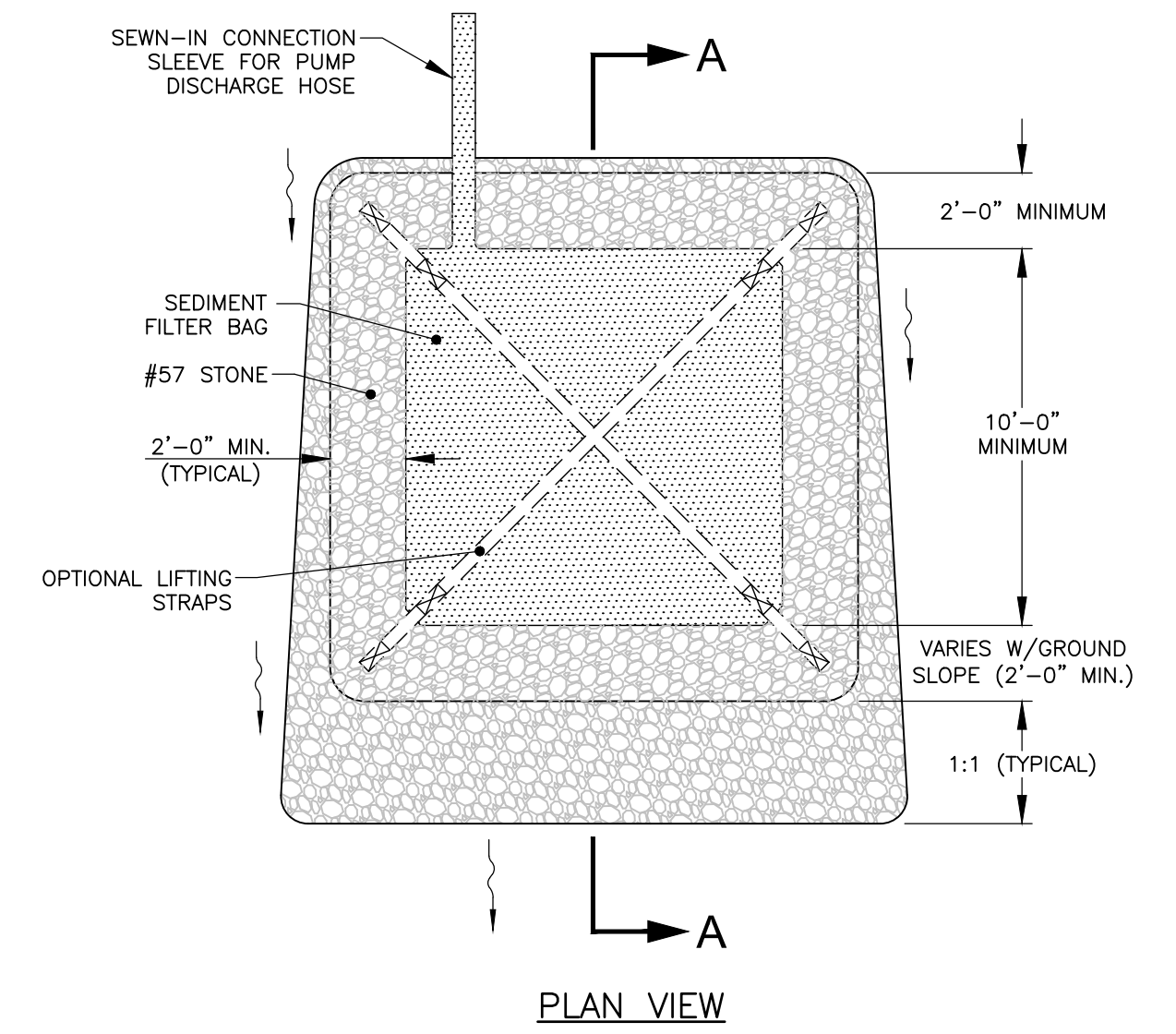
S:\10_2021-455pm F:\MSC\Projects\47175-00 - Oak Street Extension - Exeter\47175-00_C3D\Design\Production Drawings\Open Space\47175-00_C-39_Lighting.dwg



TYPICAL STREAM CROSSING - OPEN TRENCH
NOT TO SCALE

NOTES:

- GRUBBING SHALL NOT TAKE PLACE WITHIN 50' OF TOP-OF-BANK UNTIL ALL MATERIALS REQUIRED TO COMPLETE CROSSING ARE ON SITE AND OPEN BOTTOM BOX CULVERT IS READY FOR INSTALLATION.
- WATER ACCUMULATING WITHIN THE WORK AREA SHALL BE PUMPED TO A SEDIMENT BAG, SEDIMENT TRAP OR OTHER APPROVED EQUIVALENT PRIOR TO DISCHARGING INTO ANY RECEIVING SURFACE WATER.
- PROVIDE SECONDARY CONTAINMENT TO CAPTURE DRIPS, SPILLS, OR LEAKS OF FUEL OR OIL.
- HAZARDOUS OR POLLUTANT MATERIAL STORAGE AREAS AND EQUIPMENT REFUELING AREAS SHALL BE LOCATED AT LEAST 100' BACK FROM THE TOP OF STREAM OR ANY WETLAND.
- ALL EXCESS EXCAVATED MATERIAL SHALL BE IMMEDIATELY REMOVED FROM THE STREAM CROSSING AREA.
- ALL DISTURBED AREAS WITHIN 50' OF TOP-OF-BANK SHALL BE BLANKETED OR MATTED WITH WILDLIFE FRIENDLY BLANKET WITHIN 24 HOURS OF INITIAL DISTURBANCE UNLESS OTHERWISE AUTHORIZED BY THE ENVIRONMENTAL MONITOR. APPROPRIATE STREAM BANK PROTECTION SHALL BE PROVIDED. REFER TO PLAN SHEET W-03 FOR WILDLIFE FRIENDLY BLANKET SPECIFICATIONS.
- PUMP HOSE-END / INTAKE SCREEN SHALL BE PROTECTED AND SHALL NOT REST DIRECTLY ON SOIL OR THE BOTTOM OF THE FOOTING EXCAVATION.



SEDIMENT FILTER BAG WITH STONE PAD
NOT TO SCALE

SEDIMENT FILTER BAG GENERAL NOTES:

- CONTRACTOR SHALL EXERCISE CAUTION NOT TO BURST OR DAMAGE THE SEDIMENT FILTER BAG WHEN PUMPING.
- THE LENGTH AND WIDTH OF THE TEMPORARY SEDIMENT BAG SHOWN ON THIS DRAWING MAY VARY PER VENDOR SPECIFICATIONS AND THE VOLUME OF GROUNDWATER ENCOUNTERED DURING EXCAVATION. THE MINIMUM "FOOTPRINT" OF THE BAG SHALL BE 10 x 15 FEET.
- SEDIMENT FILTER BAGS SHALL BE EQUIPPED WITH A SEW-IN SLEEVE OF SUFFICIENT SIZE TO ACCEPT A MINIMUM 4 INCH DIAMETER PUMP DISCHARGE HOSE. THE DISCHARGE HOSE SHOULD BE EXTENDED INTO THIS SLEEVE A MINIMUM OF 6 INCHES AND BE TIGHTLY SECURED WITH A HOSE CLAMP OR OTHER SUITABLE MEANS TO PREVENT LEAKAGE. HOSE CONNECTION THROUGH A SLIT IN THE BAG WILL NOT BE ACCEPTABLE.
- THE PUMP DISCHARGE HOSE CONNECTION SLEEVE SHALL BE SECURELY TIED OFF DURING DISPOSAL OF THE SEDIMENT FILTER BAG IN ORDER TO PREVENT LEAKAGE OF COLLECTED SEDIMENTS.
- SEDIMENT FILTER BAG SHALL BE MAINTAINED AND REPLACED WHEN ONE HALF FULL OF SEDIMENT OR IN ACCORDANCE WITH THE MANUFACTURER'S RECOMMENDATIONS.

STREAM CROSSING - SEQUENCE OF CONSTRUCTION

THE PLACEMENT OF THESE STRUCTURES WILL BE DONE IN THE ORDER AS NUMBERED BELOW. EACH SEQUENCE BELOW WILL BE COMPLETED BEFORE THE NEXT STEP IN THE SEQUENCE COMMENCES. NO STEPS WILL BE REMOVED.

ALL CONSTRUCTION ASSOCIATED WITH CULVERT INSTALLATIONS AND OTHER PROPOSED / APPROVED WETLAND IMPACTS SHALL BE MONITORED BY A CERTIFIED WETLAND SCIENTIST / ENVIRONMENTAL MONITOR / CERTIFIED PROFESSIONAL IN EROSION AND SEDIMENT CONTROL WHO SHALL REPORT ANY WATER QUALITY VIOLATIONS TO NHDES WITHIN 24 HOURS.

THE TIME OF WETLAND OR STREAM BUFFER DISTURBANCE WILL BE LIMITED AND WILL BE SCHEDULED DURING LOW FLOW OR NO FLOW CONDITIONS.

UNTIL COMPLETION OF THE CROSSING, ACCESS TO THE FAR STREAM BANK WILL BE THROUGH THE EXISTING CROSSING AT OAK STREET EXTENSION. THERE SHALL BE NO TEMPORARY CROSSING OR IMPACTS TO NORRIS BROOK.

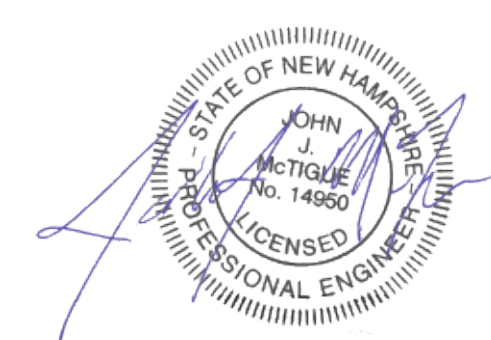
- AT STREAM CROSSINGS, A STREAM BANK BUFFER AREA SHOULD BE MAINTAINED TO THE LARGEST EXTENT FEASIBLE. CLEARING, SOD DISTURBANCE, EXCAVATION, AND EQUIPMENT TRAFFIC SHOULD BE MINIMIZED WITHIN THE BUFFER. ACTIVITIES SUCH AS STACKING CUT LOGS, DISCHARGING RAINWATER FROM TRENCHES, WELDING PIPE JOINTS, STORING PIPE SECTIONS, REFUELING AND MAINTAINING EQUIPMENT SHOULD BE ACCOMPLISHED OUTSIDE OF THESE BUFFERS.
- INSTALL APPROPRIATE SEDIMENT BARRIER DOWN SLOPE OF ALL SPOIL/EXCAVATION FROM WETLAND IMPACT AREAS PRIOR TO THE COMMENCEMENT OF CONSTRUCTION.
 - NOTE: THE SEDIMENT BARRIER FOR THE SPOIL AREAS MUST BE A MINIMUM OF 10' FROM TOP OF STREAM BANK.
- SELECT A LOCATION FOR AND INSTALL WATER PUMP. IF A LEVEL AREA IS REQUIRED, GRADE THE PUMP AREA, THEN PLACE A 4" LAYER OF #57 STONE OR REINFORCED EROSION CONTROL BLANKET.
- DURING THE EXCAVATION FOR THE PLACEMENT OF THE FOOTINGS:
 - ALL WATER THAT NEEDS TO BE PUMPED FROM THE FOOTING EXCAVATIONS SHALL BE REMOVED BY DISCHARGE THROUGH A PUMPED WATER FILTER BAG OR EQUIVALENT. SEE FILTER BAG PAD DETAIL.
 - IF THE AREA THAT THE BAG IS PLACED ON IS GREATER THAN 5% SLOPE, THEN A PUMPED WATER FILTER BAG PAD WILL BE CONSTRUCTED. SEE FILTER BAG PAD DETAIL.
- EXCAVATE MATERIAL FOR THE FOOTINGS. THE MATERIAL WILL THEN BE PLACED IN THE DESIGNATED SPOIL AREAS. SEGREGATE WETLAND TOPSOIL SEPARATE FROM SUBSOIL FOR LATER USE IN BACKFILLING (IN THE REVERSE ORDER OF ORIGINAL EXCAVATION) AND RESTORING TEMPORARY WETLAND AND WETLAND BUFFER IMPACTS.
- INSTALL CROSSING
 - INSTALL CULVERT FOOTING.
 - FOOTINGS WILL BE CONSTRUCTED / ACCESSED FROM THE APPROPRIATE SIDE OF NORRIS BROOK USING OAK STREET EXTENSION AS APPROPRIATE. THERE WILL BE NO TEMPORARY ACCESS ACROSS NORRIS BROOK DURING CONSTRUCTION.
 - INSTALL BOX CULVERT.
 - BACKFILL WILL THEN BE PLACED AROUND AND ON THE FOOTING AND BOX CULVERT. BACK FILL AND COMPACT IN A MAXIMUM OF 12" LIFTS.
- THE TEMPORARY WETLAND IMPACTS AND WETLAND BUFFER AREAS WILL BE RESTORED TO ORIGINAL CONTOURS. ALL DISTURBED AREAS WILL BE SEEDED AND MULCHED.
 - USE NEW ENGLAND EROSION CONTROL/RESTORATION MIX FOR MOIST SITES BY NEW ENGLAND WETLAND PLANTS, INC. OR APPROVED EQUIVALENT.
 - SEED AT A RATE OF 1LB/1250SF. APPLY TO BARE SOIL. LIGHTLY MULCH WITH CLEAN WEED FREE STRAW.
 - THE SILT BARRIER DOWN SLOPE OF THE SPOIL FROM CROSSING PLACEMENT AREAS WILL REMAIN IN PLACE AND MAINTAINED UNTIL PERMANENT VEGETATED STABILIZATION IS ACHIEVED.
 - PERMANENT STABILIZATION WILL BE ACHIEVED WHEN A UNIFORM 85% VEGETATIVE COVER OF THE ENTIRE SEEDED AREA IS ESTABLISHED.
- THE PUMPING OF WATER TO THE WATER FILTER BAG AS SHOWN IN STEP 4 OF THE INSTALLATION WILL CONTINUE DURING FOOTING BACKFILL AND RESTORATION PROCEDURES.
- REMOVE PUMPED WATER FILTER BAGS. THE AREA UTILIZED FOR THE PUMPED WATER FILTER BAG/PAD WILL BE REGRADED, SEEDED AND MULCHED.
- THE PUMPING AREA AS SHOWN IN INSTALLATION SEQUENCE 4 WILL BE REGRADED, SEEDED AND MULCHED.
- UPON COMPLETION OF AN EARTH DISTURBANCE ACTIVITY OR ANY STAGE OR PHASE OF AN ACTIVITY, THE SITE SHALL BE IMMEDIATELY SEEDED, MULCHED WITH STRAW (NO HAY SHALL BE USED), OR OTHERWISE PROTECTED FROM ACCELERATED EROSION AND SEDIMENTATION.

PLANNING BOARD FILE #17-27

APPROVED BY THE EXETER PLANNING BOARD
ON _____ AND
CHAIRMAN: _____
SECRETARY: _____



Copyright 2021 © Thomas F. Moran, Inc.
48 Constitution Drive, Bedford, N.H. 03110
All rights reserved. These plans and materials may not be copied, duplicated, replicated or otherwise reproduced in any form whatsoever without the prior written permission of Thomas F. Moran, Inc.
This plan is not effective unless signed by a duly authorized officer of Thomas F. Moran, Inc.
CONTACT DIG SAFE 72 BUSINESS HOURS PRIOR TO CONSTRUCTION



REV.	DATE	DESCRIPTION	DR	CK
6	07/12/21	REVISE BOX CULVERT FOOTINGS	JJM	RRC
5	11/26/18	REVISED PER PLANNING BOARD COMMENTS	ETP	JJM
4	11/15/18	REVISED PER INHOUSE REVIEW	JJM	JJM
3	11/05/18	REVISED PER PLANNING BOARD COMMENTS	ETP	JJM
2	10/01/18	REVISED PER PLANNING BOARD COMMENTS	ETP	JJM
1	8/31/18	NEW SHEET	ETP	JJM

TAX MAP 54 LOTS 5, 6 & 7 TAX MAP 63 LOT 205
STREAM CROSSING SEQUENCE OF CONSTRUCTION
EXETER ROSE FARM
FOREST STREET & OAK STREET EXTENSION
EXETER, NEW HAMPSHIRE, COUNTY OF ROCKINGHAM
BENJAMIN & JOAN DAGOSTINO REVOCABLE TRUST
OWNED BY
EXETER ROSE FARM, LLC & BENJAMIN & JOAN DAGOSTINO REVOCABLE TRUSTS
SCALE: NTS
AUGUST 15, 2017

TFM **MSC**
Civil Engineers
Structural Engineers
Traffic Engineers
Land Surveyors
Landscape Architects
Scientists
170 Commerce Way, Suite 102
Portsmouth, NH 03801
Phone (603) 431-2222
Fax (603) 431-0910
www.tfmoran.com

FILE 47175.00 DR ETP FB
CK JJM CADFILE 47175-00_StreamXing.dwg C-40

Sep 10, 2021 - 4:56pm F:\MSC\Projects\47175 - Oak Street Extension - Exeter\47175-00_CAD\Design\Production\Drawings\Open Space\47175-00_C-40_StreamCrossingSOC.dwg