

An aerial, black and white photograph of the Exeter Church. The image shows a prominent brick tower with a gabled roof and a large, circular window on its side. The tower is part of a larger brick building with several arched windows. In the background, there is a large, open field, some trees, and other buildings. The sky is clear.

EXETER CHURCH
HISTORIC DISTRICT COMMISSION PRESENTATION
DECEMBER 16, 2021

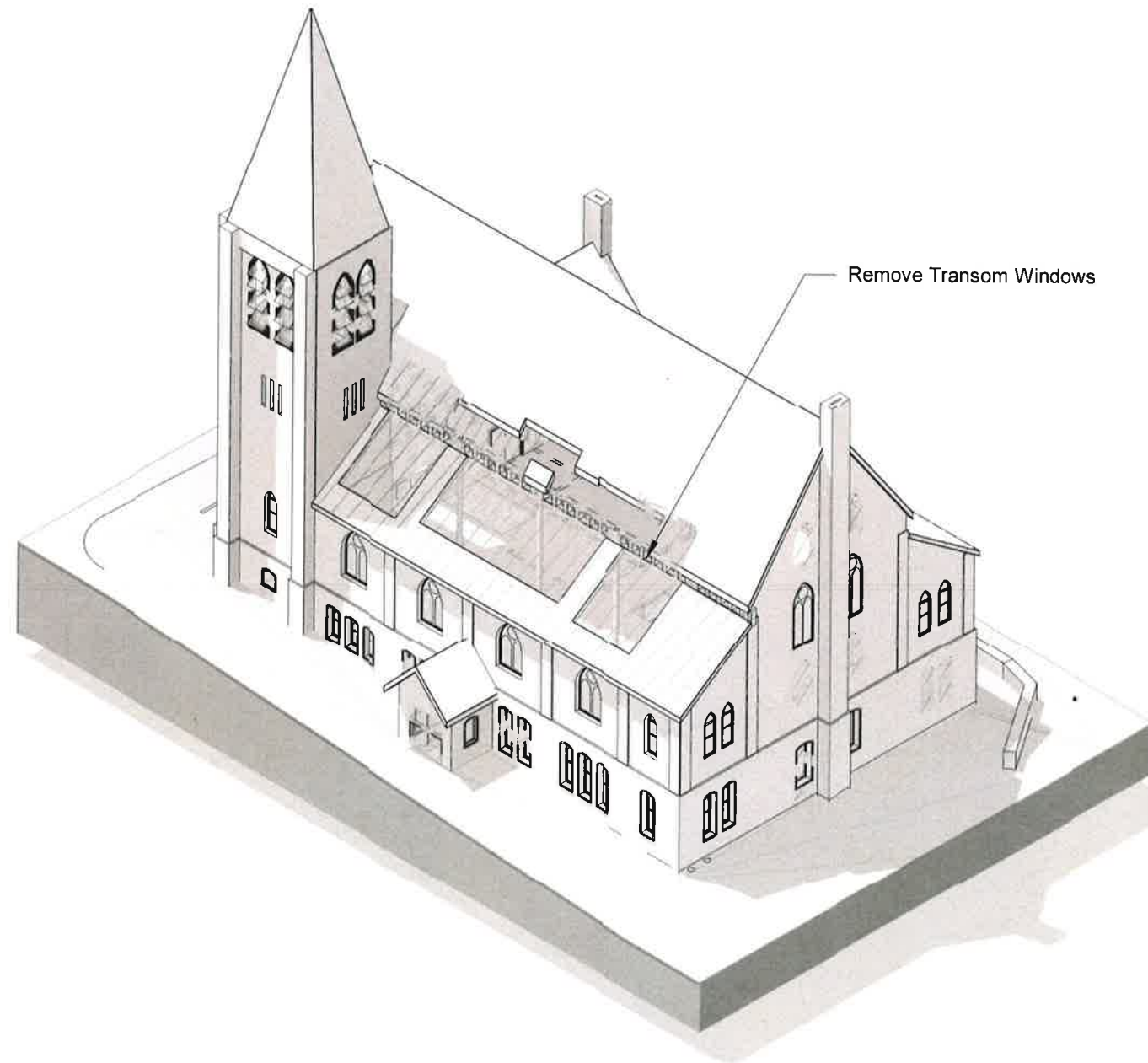
EXONIAN PROPERTIES, LLC
FINEGOLD ALEXANDER ARCHITECTS

2

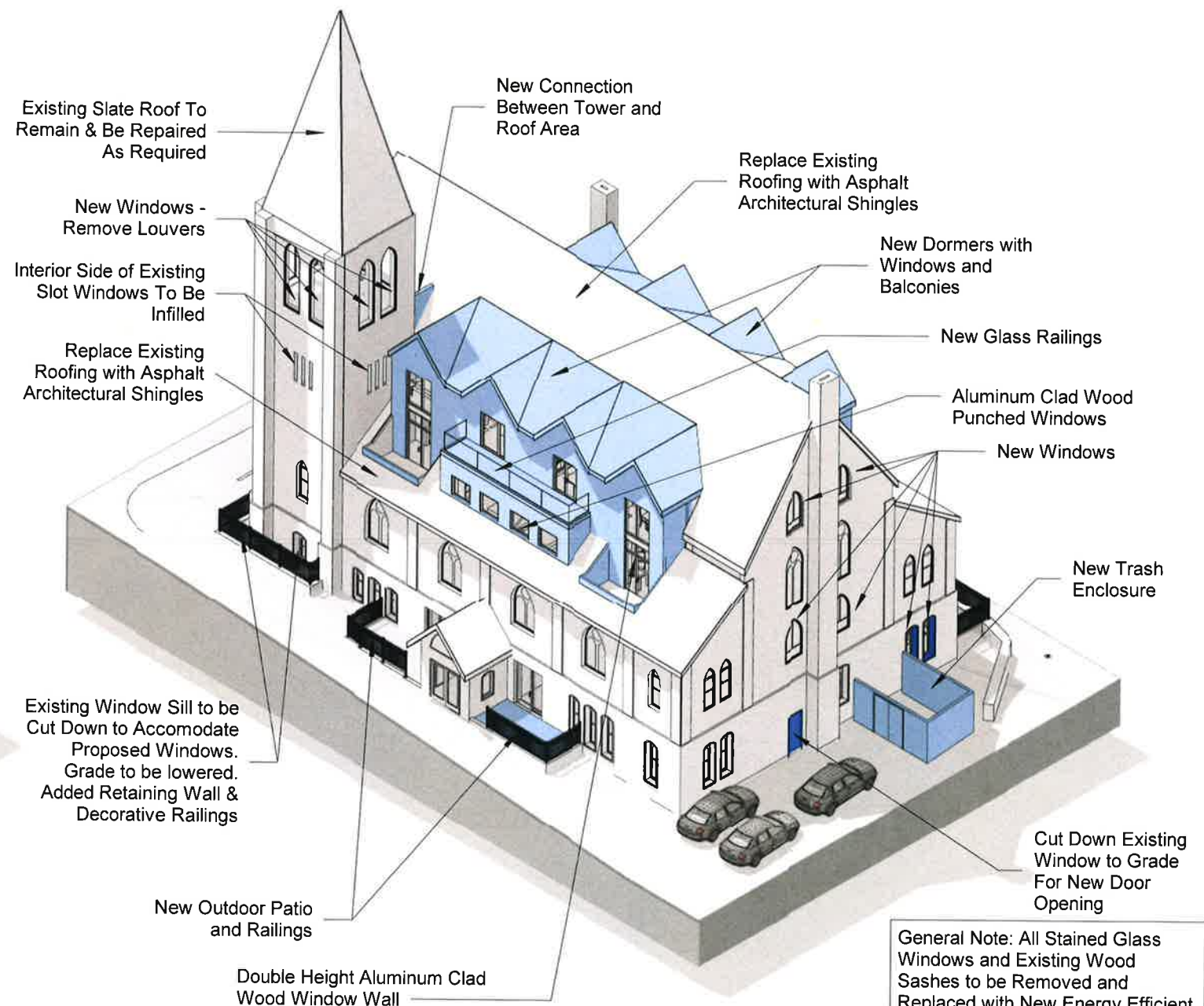
PROPOSED MODIFICATIONS TO EXETER CHURCH

EXONIAN PROPERTIES, LLC

FINEGOLD ALEXANDER ARCHITECTS

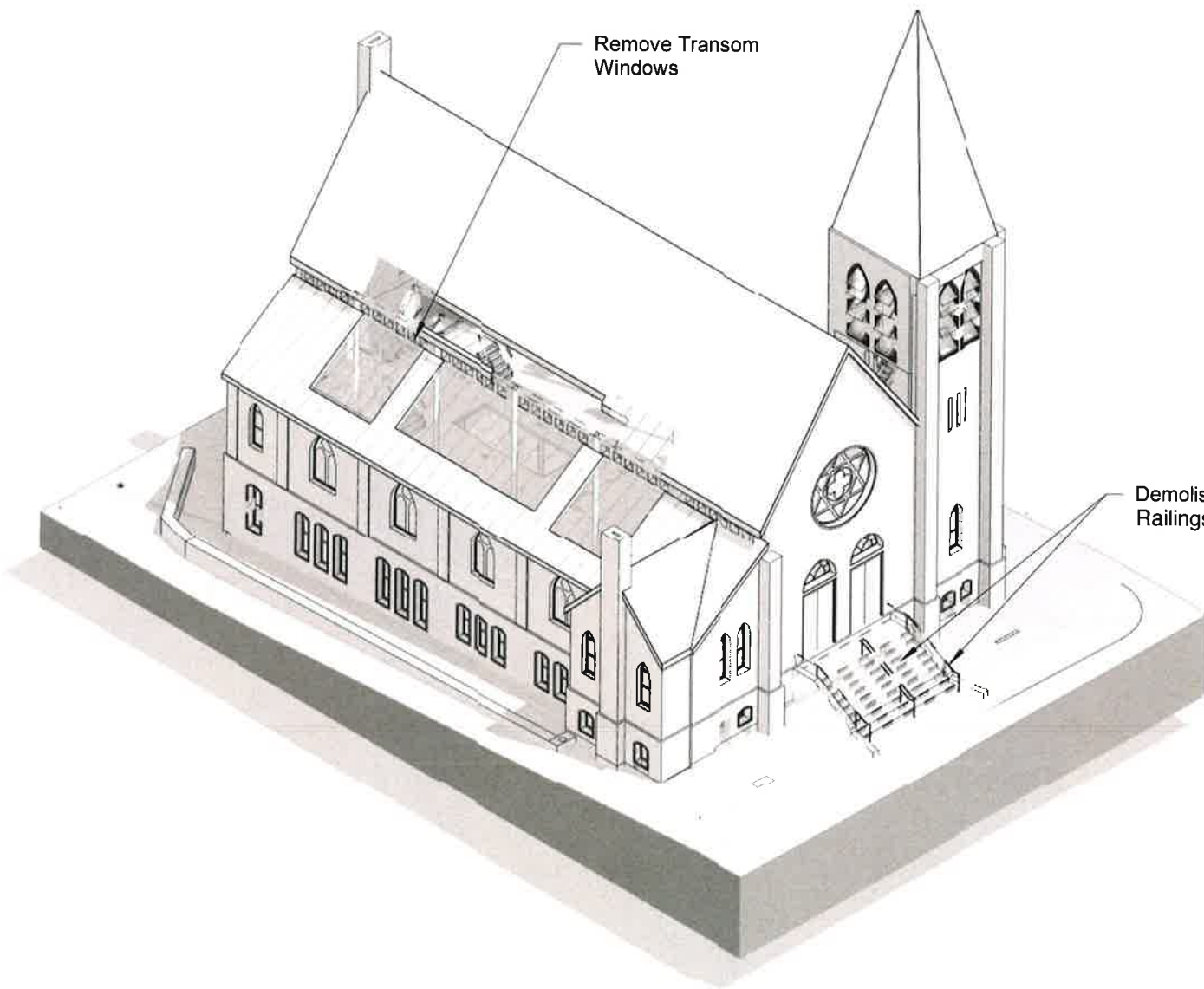


1 North Corner-Existing

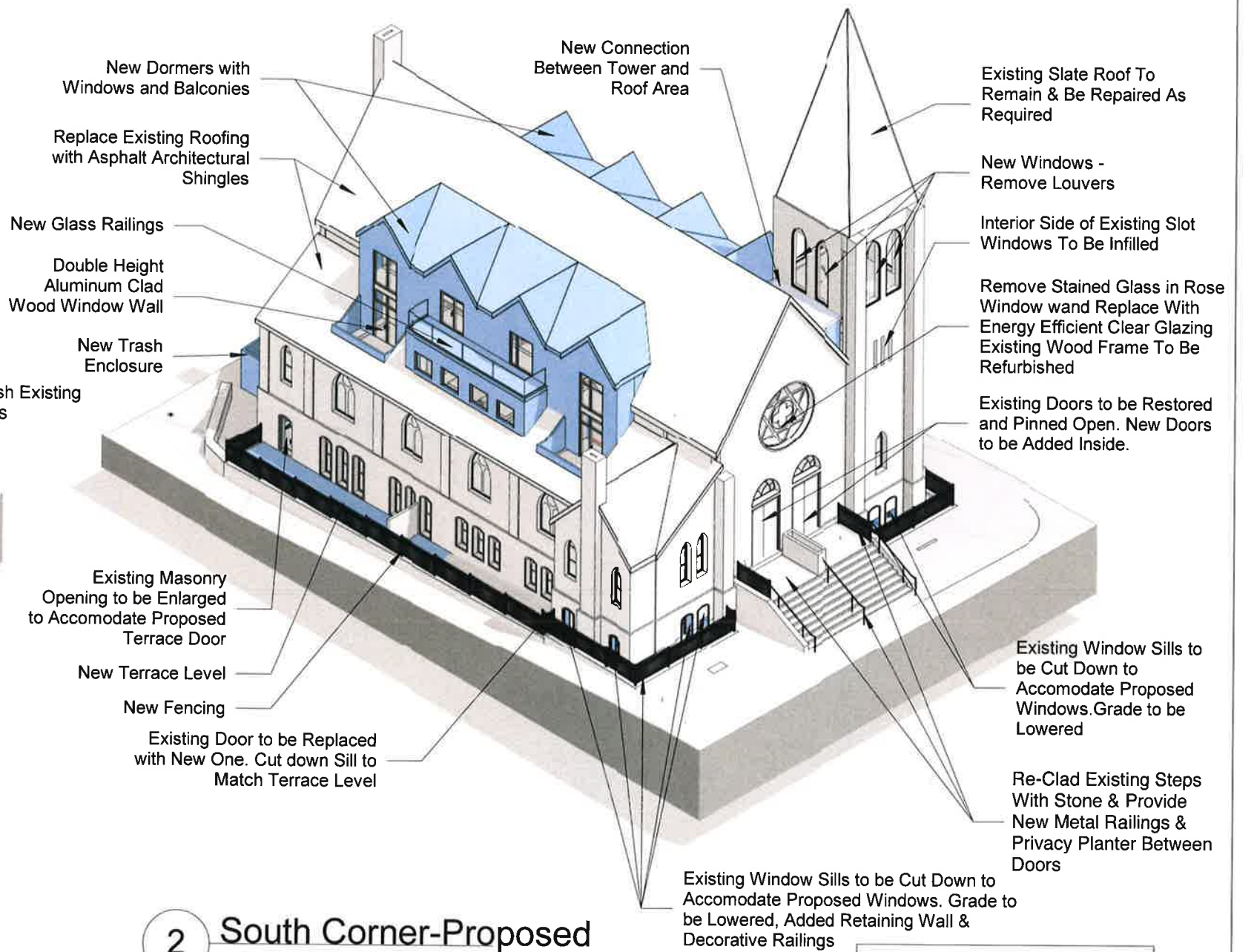


2 North Corner-Proposed

General Note: All Stained Glass Windows and Existing Wood Sashes to be Removed and Replaced with New Energy Efficient Window Sashes. Existing Wood Window Frames To Be Refurbished.



1 South Corner-Existing



2 South Corner-Proposed

General Note: All Stained Glass Windows and Existing Wood Sashes to be Removed and Replaced with New Energy Efficient Window Sashes. Existing Wood Window Frames To Be Refurbished.



Existing Photo From Southwest Corner

Exeter Church
2 Spring Street
Exeter, NH

EXONIAN PROPERTIES, LLC

Finegold Alexander Architects Inc
10/29/21



3D Perspective From Southwest Corner

Exeter Church
2 Spring Street
Exeter, NH

EXONIAN PROPERTIES, LLC

Finegold Alexander Architects Inc
10/29/21



Existing Photo From Northwest Corner

Exeter Church
2 Spring Street
Exeter, NH

EXONIAN PROPERTIES, LLC

Finegold Alexander Architects Inc
10/29/21



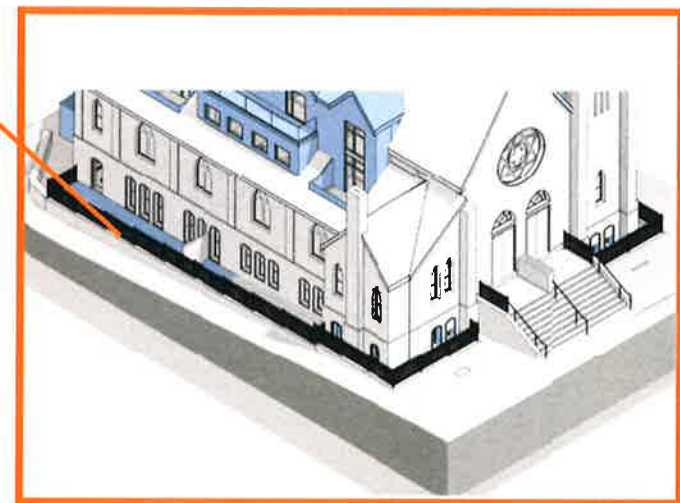
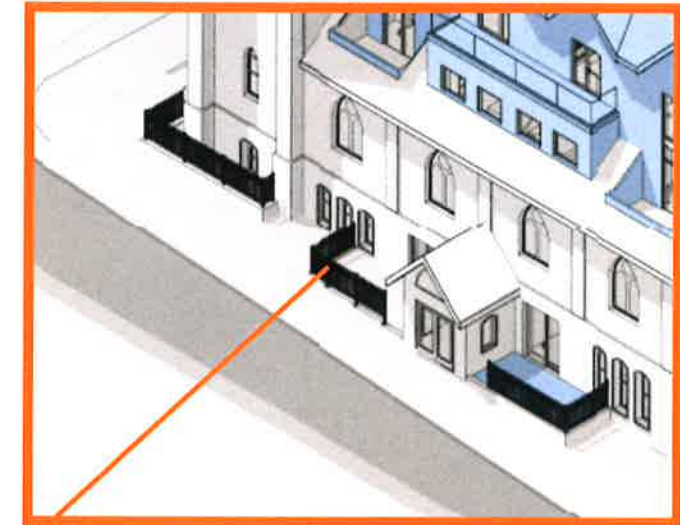
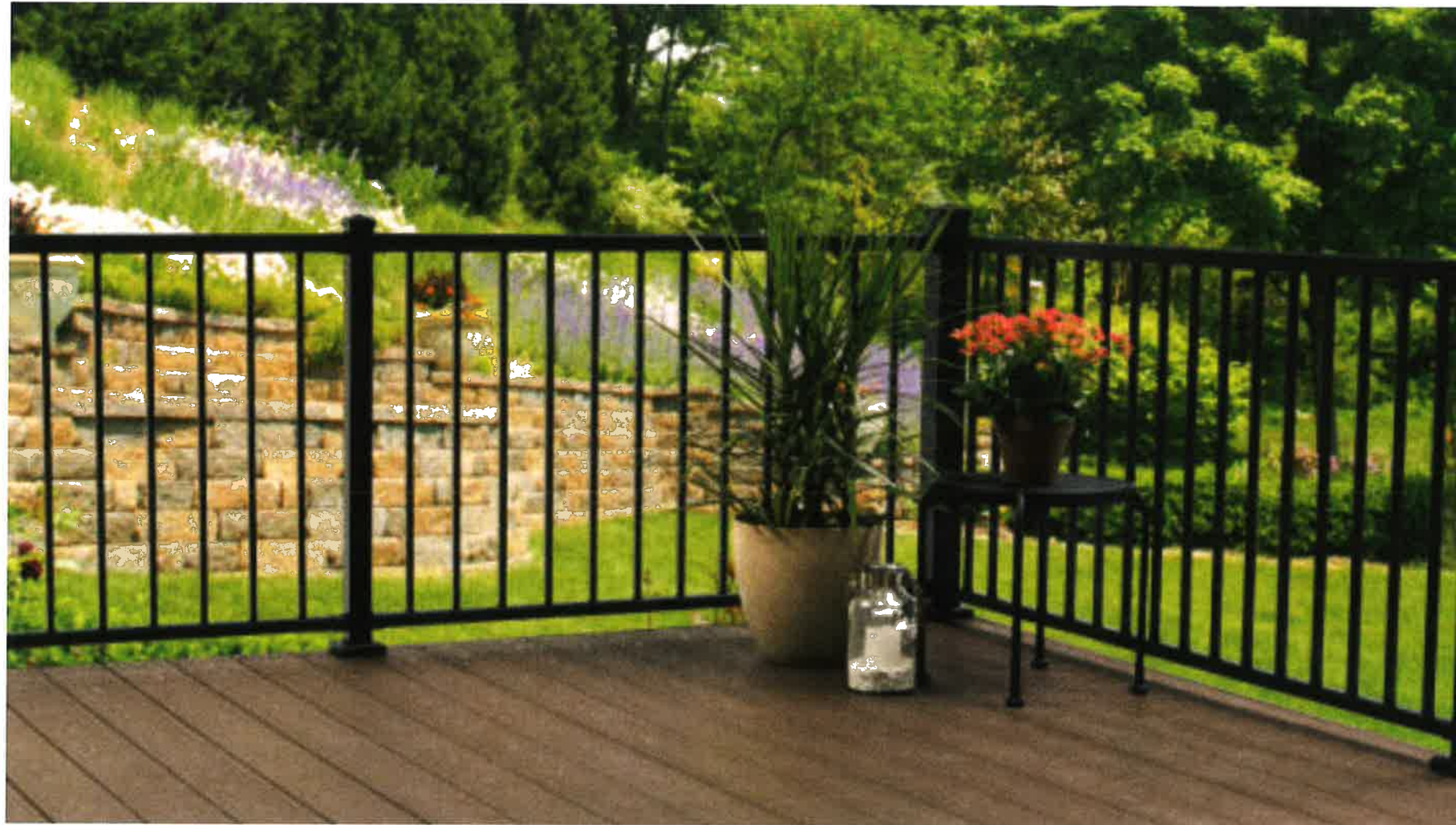
3D Perspective From Northwest Corner

Exeter Church
2 Spring Street
Exeter, NH

EXONIAN PROPERTIES, LLC

Finegold Alexander Architects Inc
10/29/21

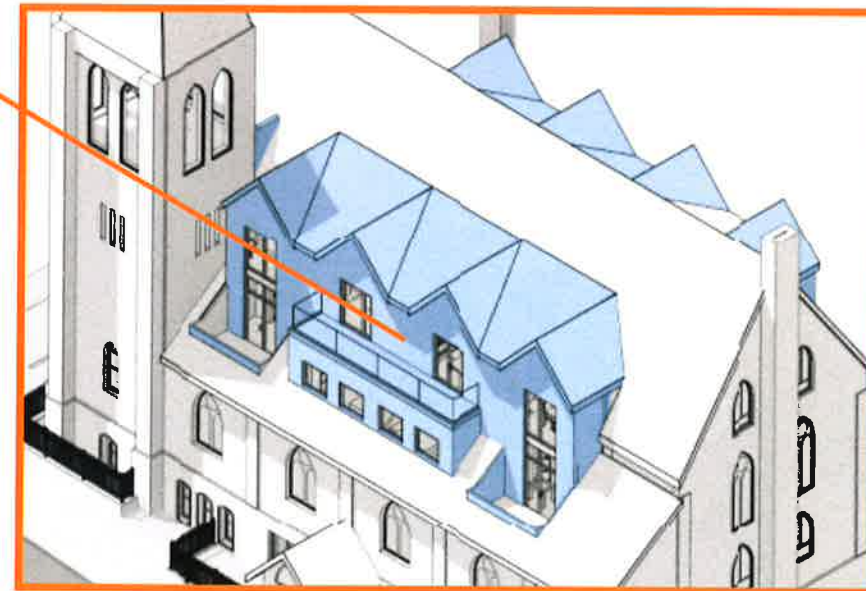
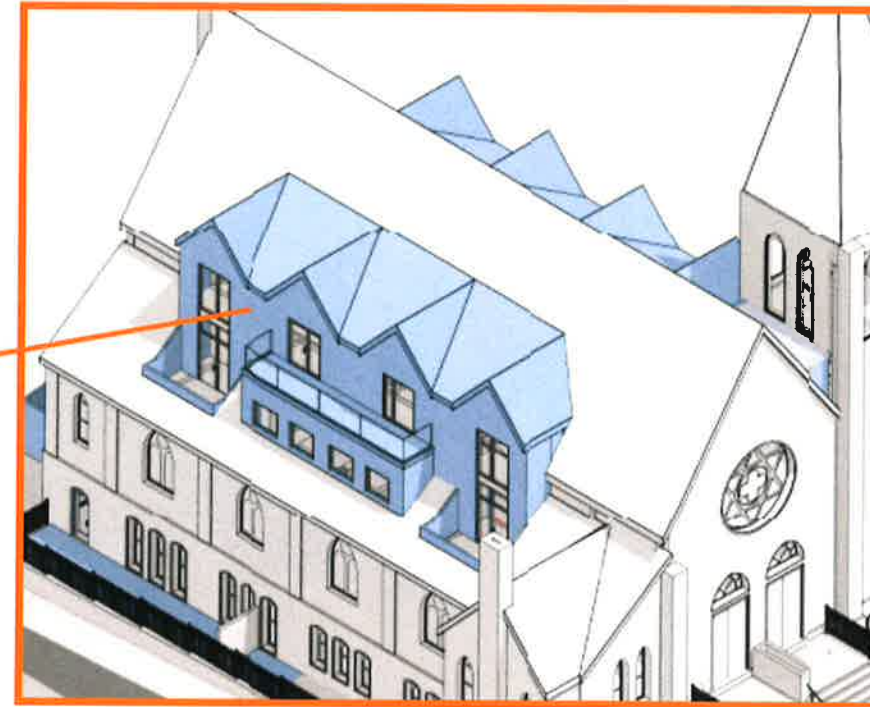
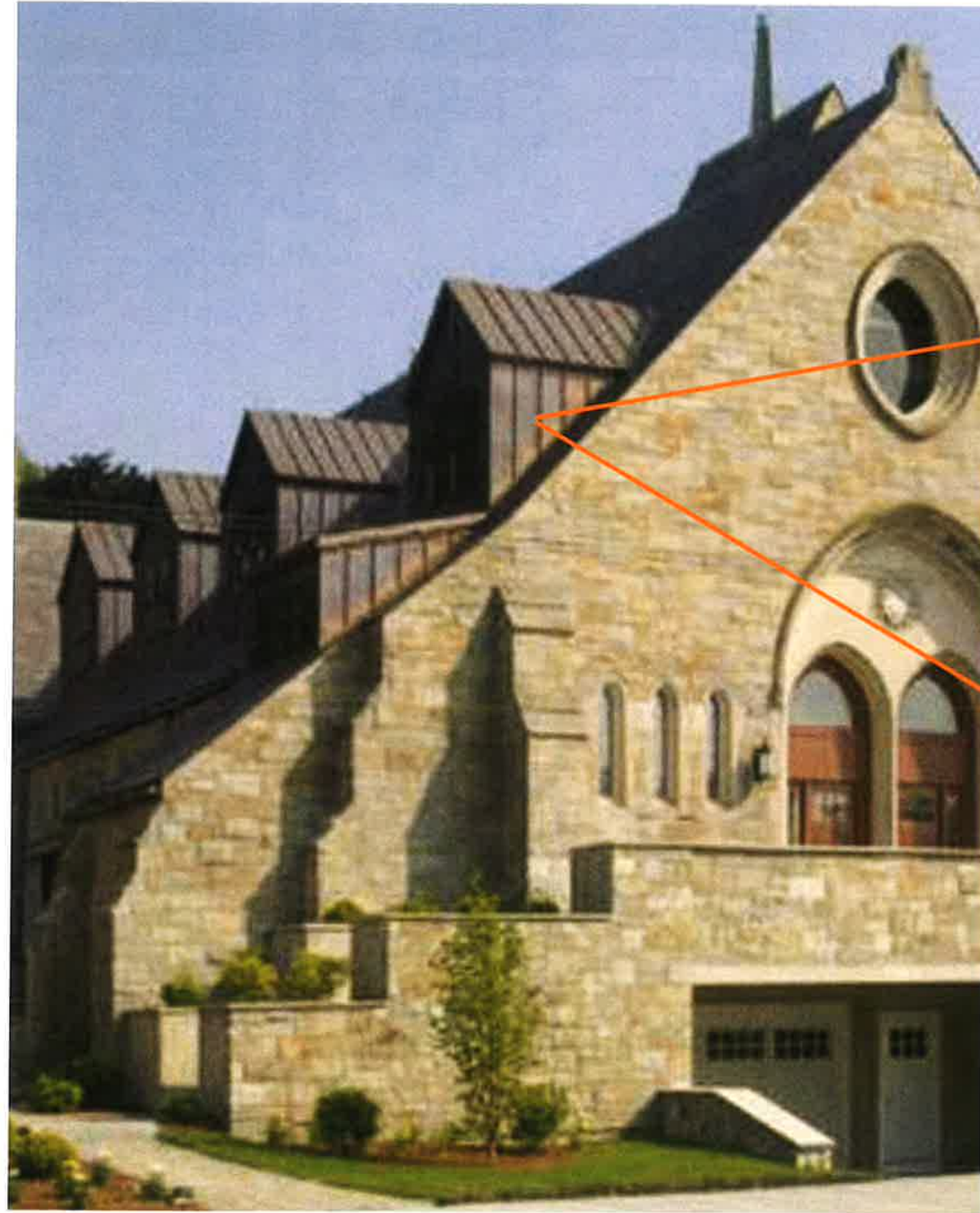
Ground Level Terrace Railings



Material: Aluminum Picket Railing

Color: Black

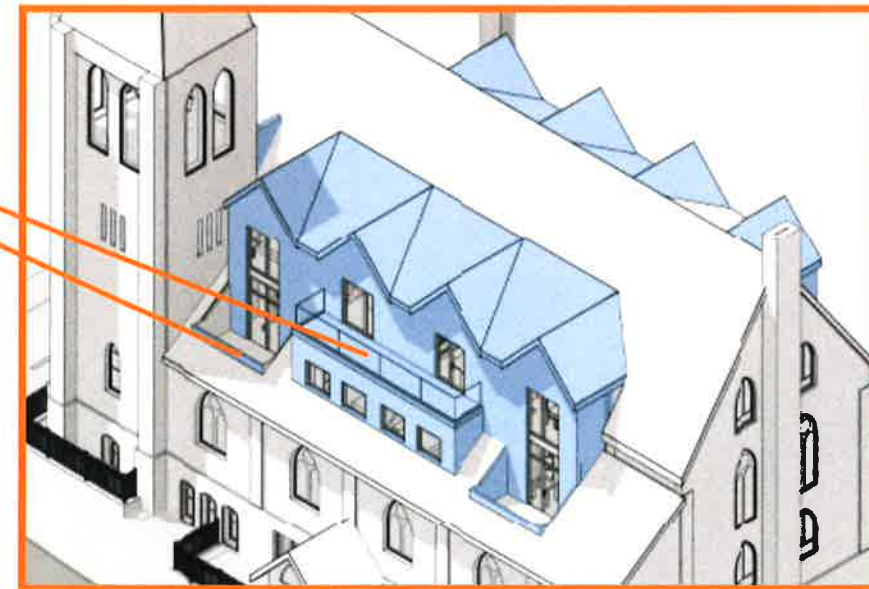
Dormer Cladding Material



Material: Zinc Coated Copper

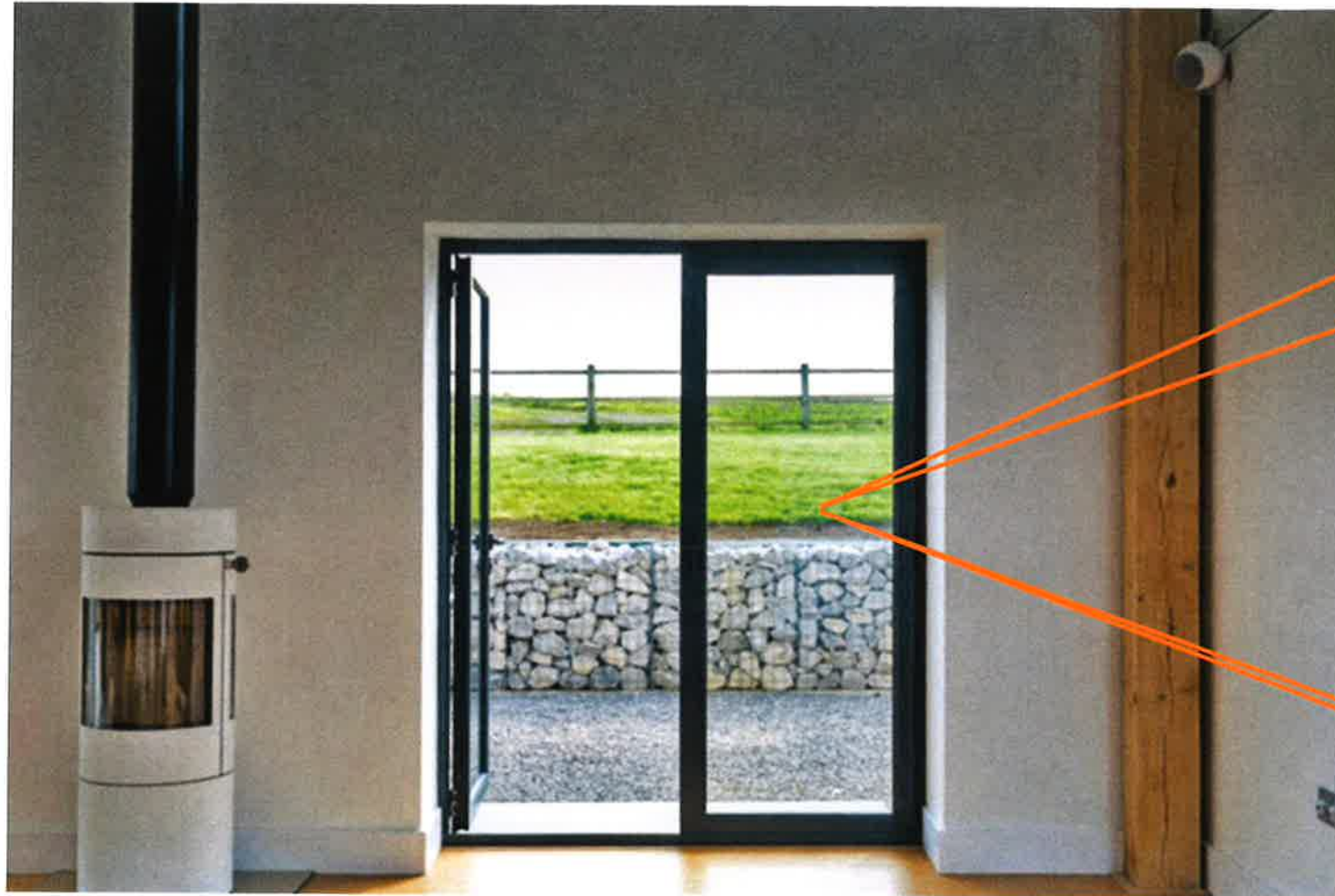
Color: Zinc Grey

Glass Railings at Levels 3/4 Balconies

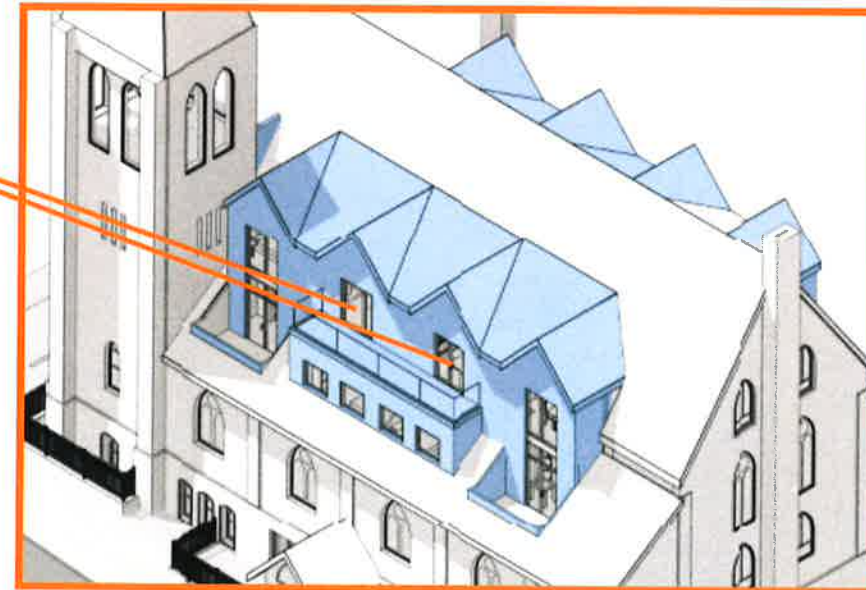


Material: Clear Laminated Glass Railing
Color: Anodized Aluminum Square Rail Cap

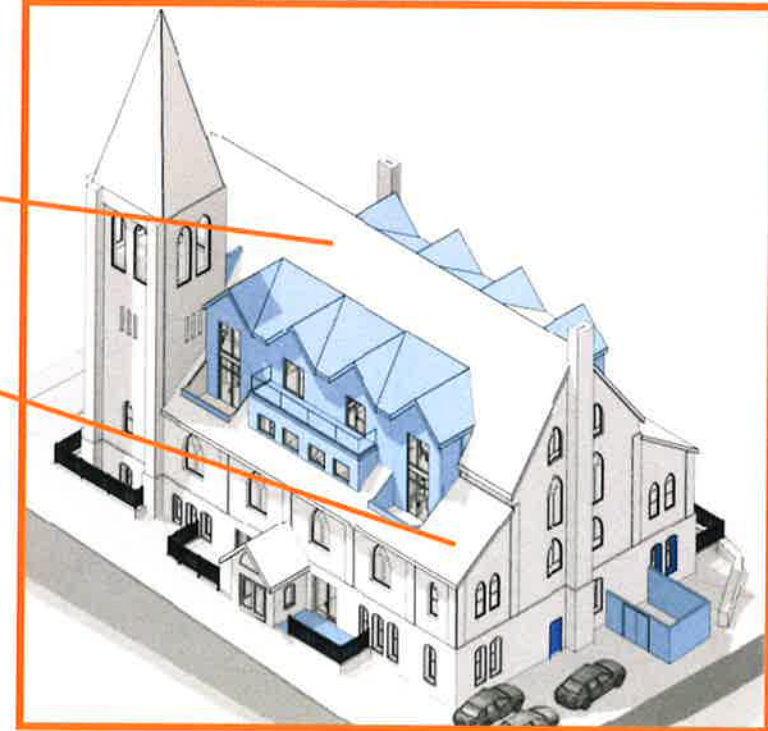
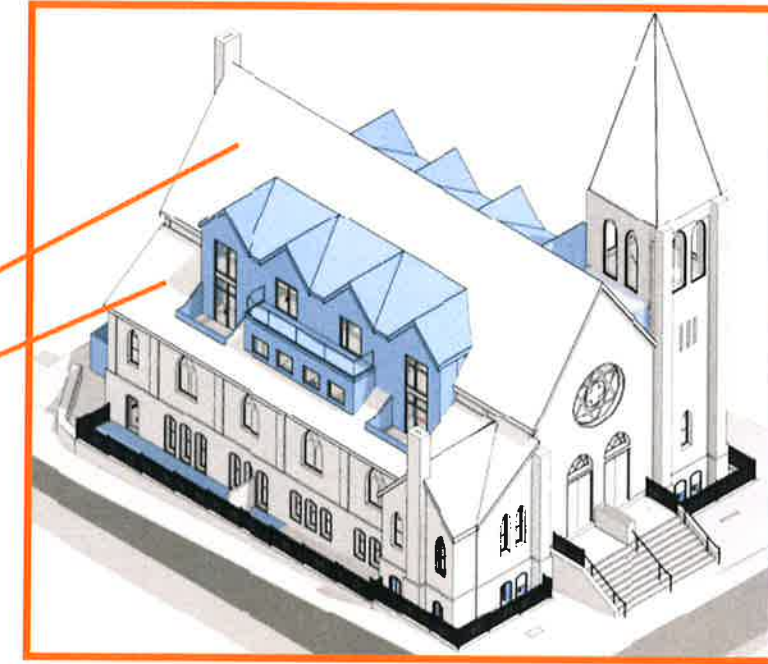
Levels 3/4 Balcony Doors



Material: Aluminum Clad Wood French Doors



Proposed Roof - Asphalt Architectural Shingle



Material: Asphalt Architectural Shingles
Color: In Keeping With Existing Slate Color