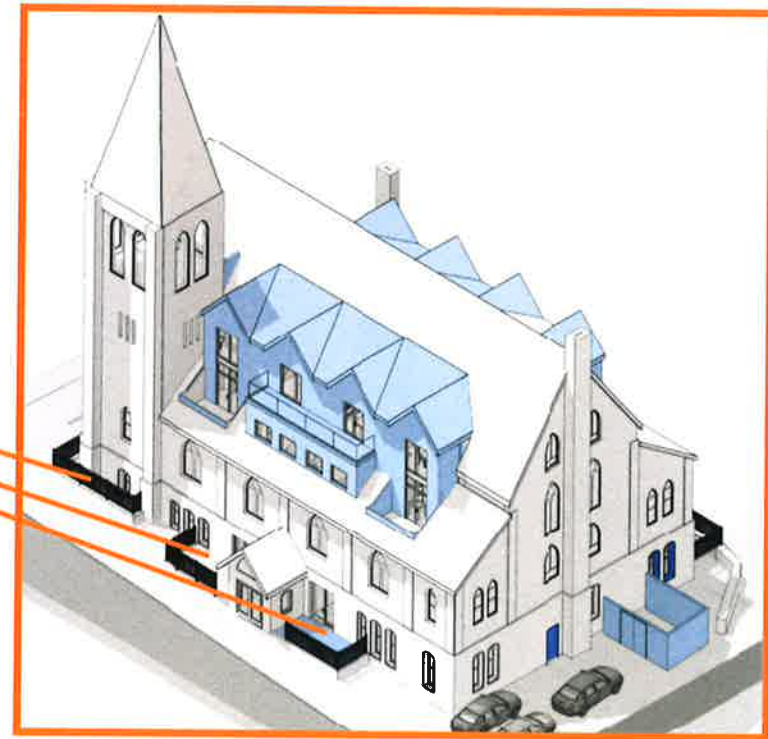
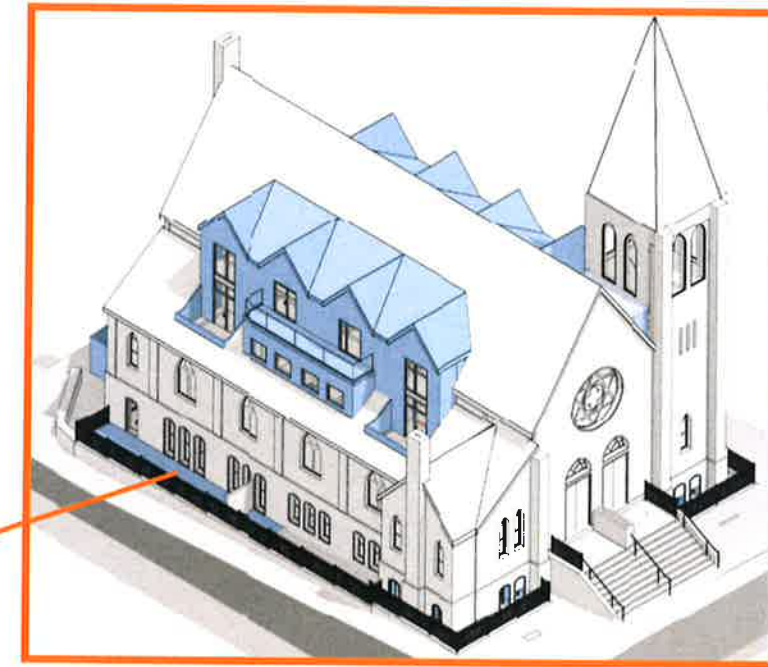


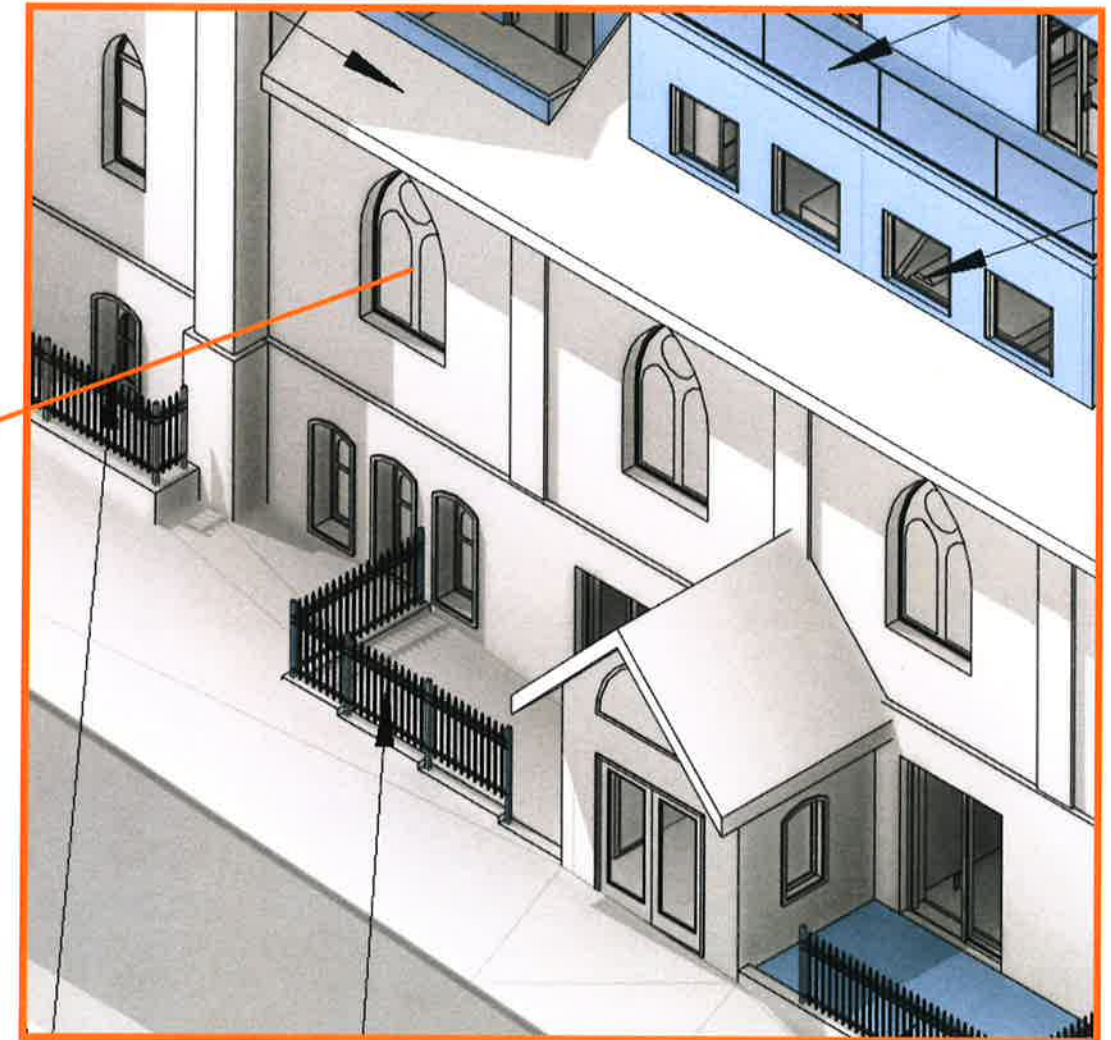
Ground Level Terrace Walking Surface



Material: Cementitious 2x2 Pavers

Application: On Pedestals For Drainage Beneath

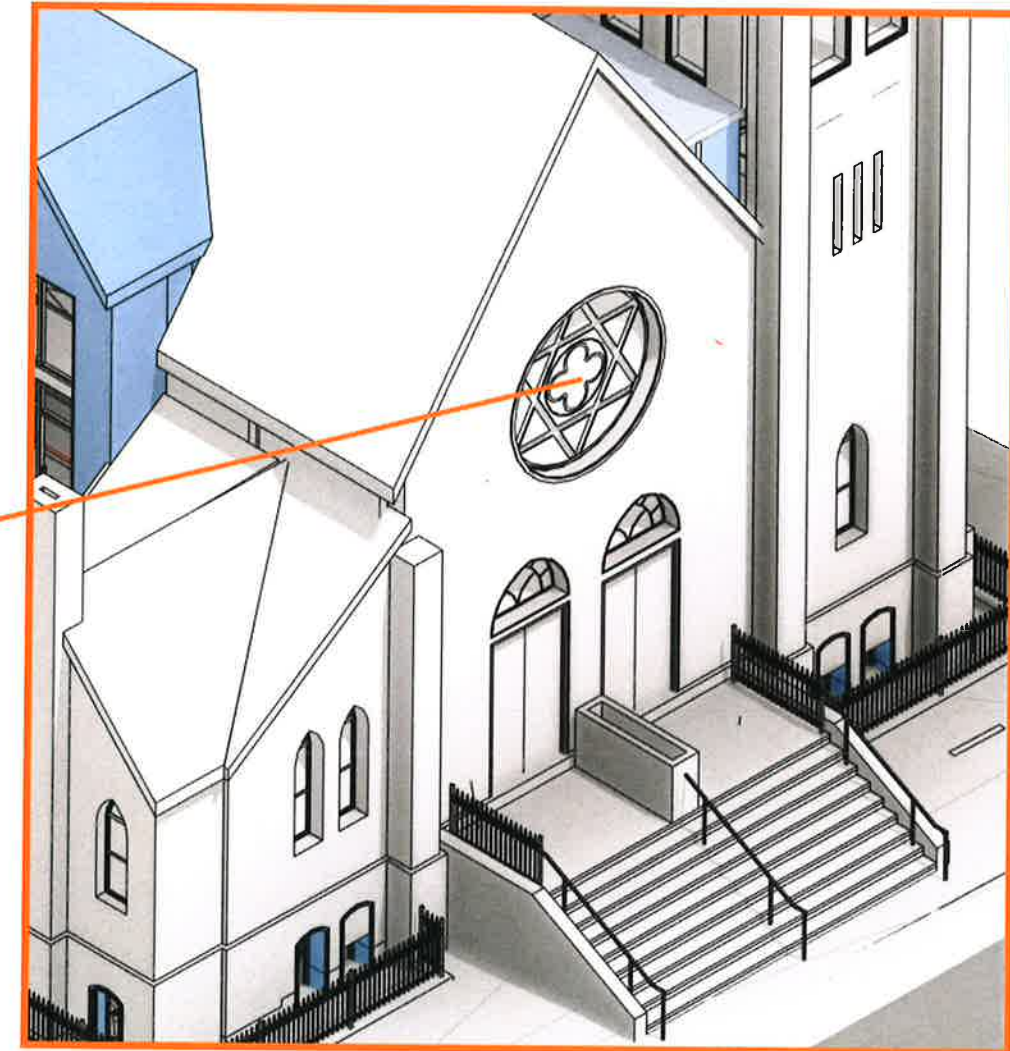
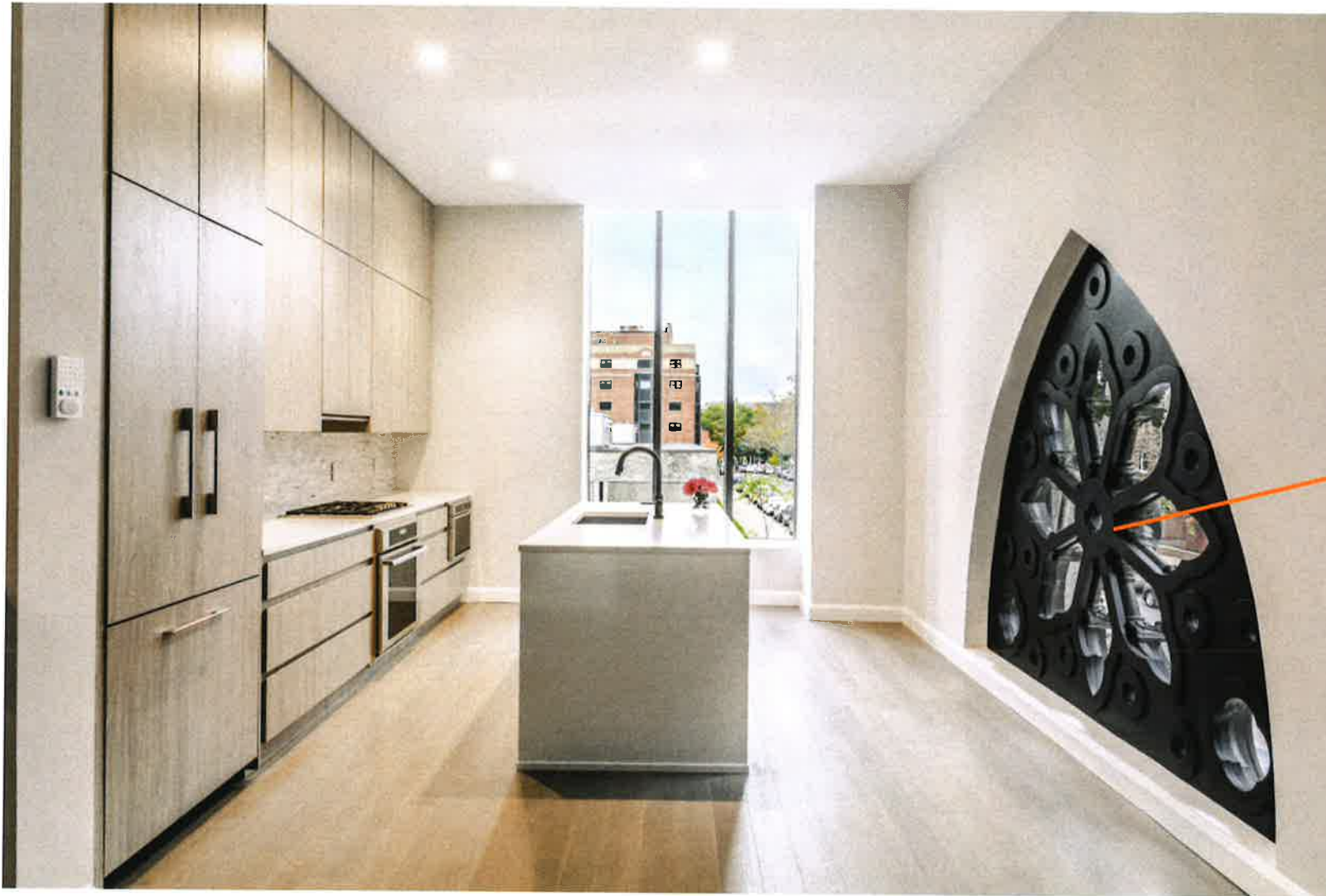
Typical Window Replacement



Scope:

- Remove Existing Stained Glass
- Remove Existing Wood Window Sashes
- Refurbish Existing Decorative Wood Window Frames
- Replace Sashes With New Wood Sashes with Insulated Glazing

Proposed Alterations to Rose Window



Scope:

- Remove Existing Stained Glass
- Refurbish Existing Decorative Wood Rose Window Frame
- Replace Glazing With New Clear Insulated Glazing

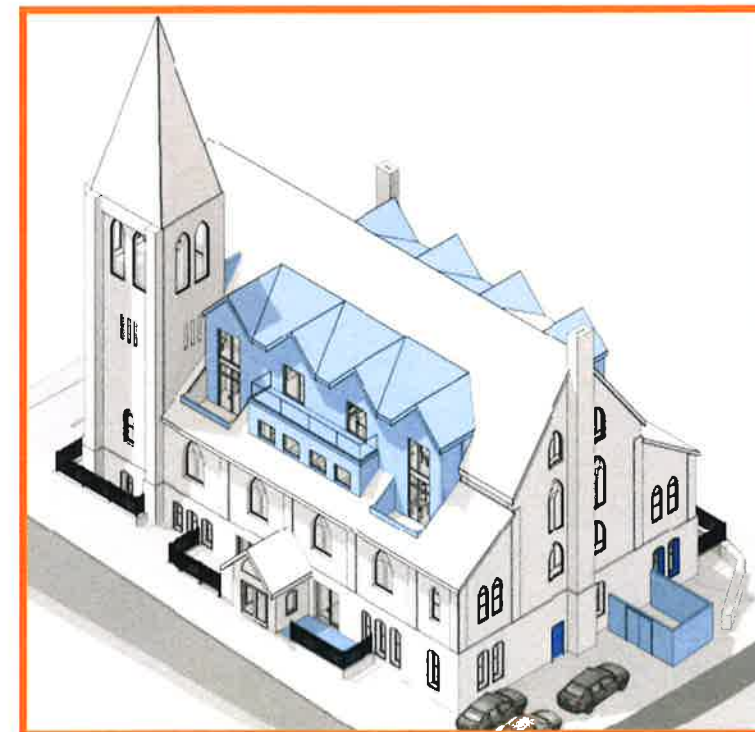
Replace Copper Gutters & Downspouts



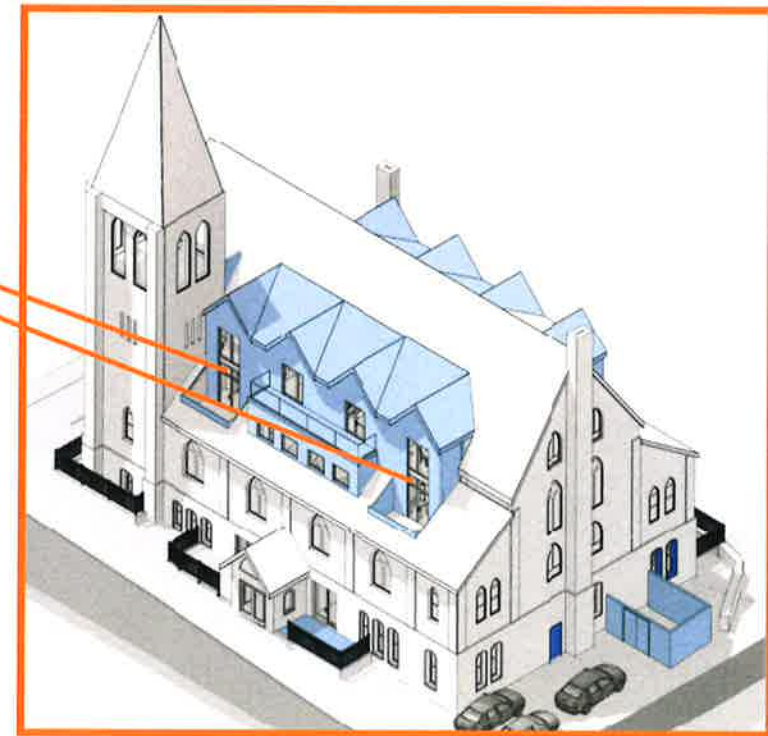
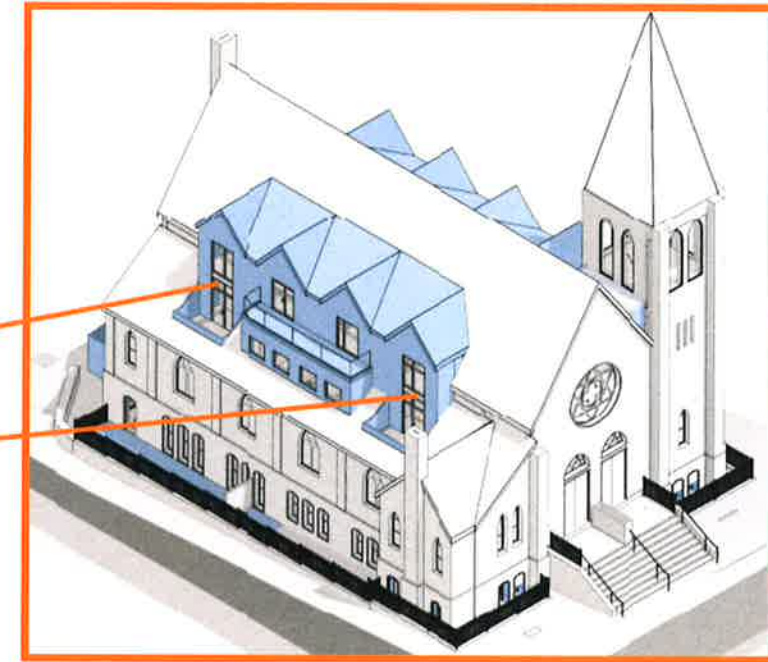
Material: Red Copper

Detail: Match Existing Profiles & Detailing

Note:
Gutters & Downspouts
To Be Designed & Located
As Needed Per Final Design



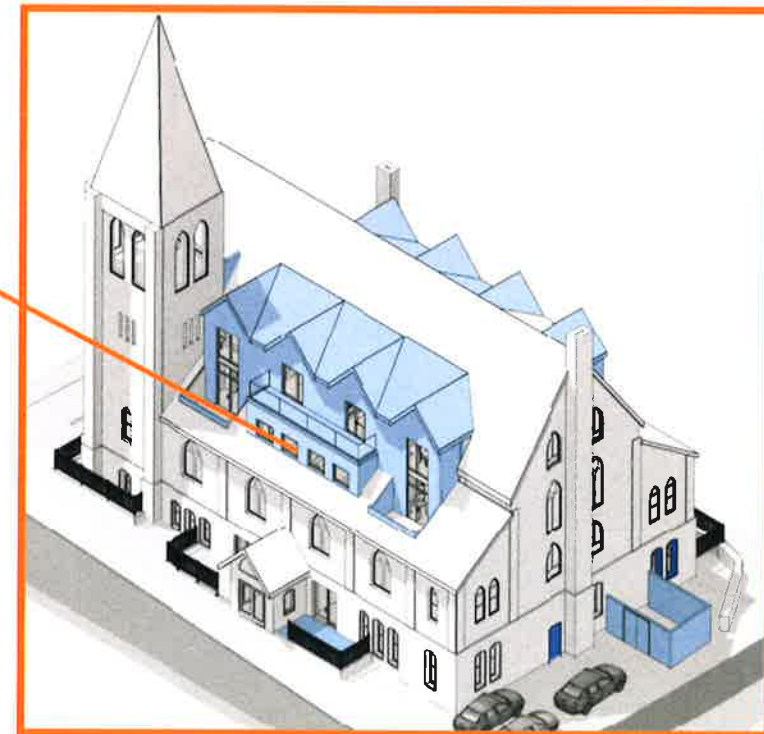
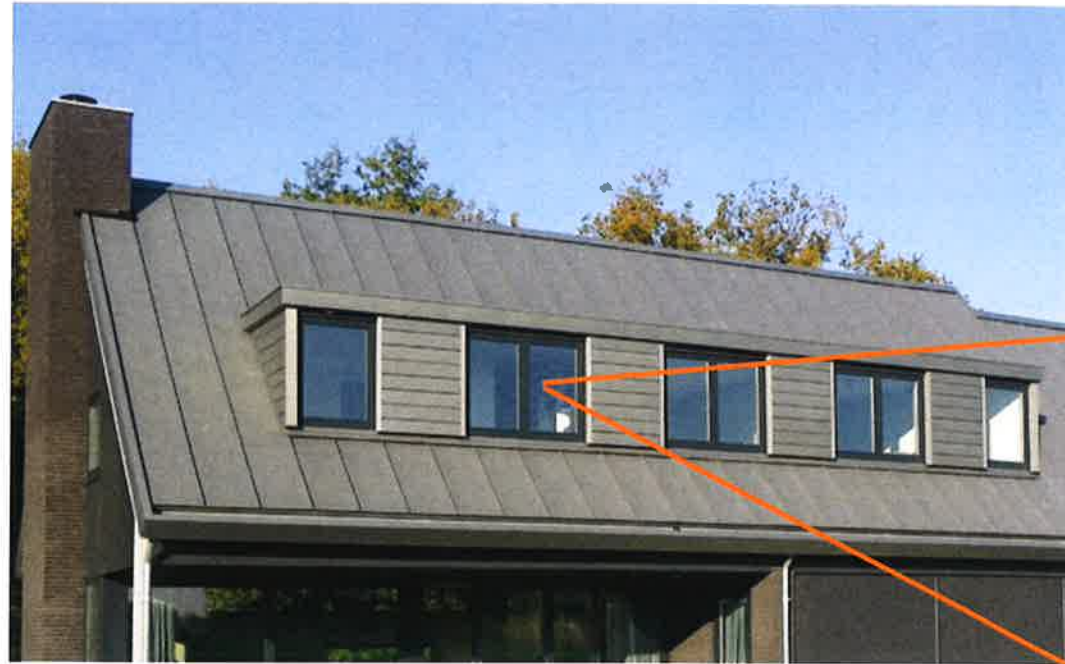
2-Story Dormer Glazing



Material: Aluminum Clad Wood Frames

Glazing: Clear Insulated Glass W/ Metal Spandrel Panel

3rd Floor Dormer Punched Windows



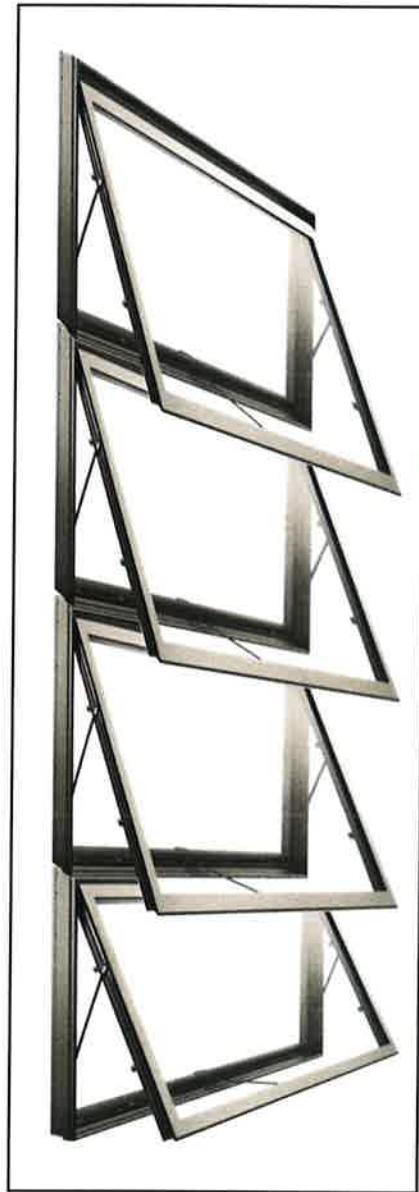
Casement

**Pella Contemporary Architect Series
(Or Equivalent)
Aluminum Clad Casement Windows**

Material: Aluminum Clad Wood Frames

Glazing: Clear Insulated Glass

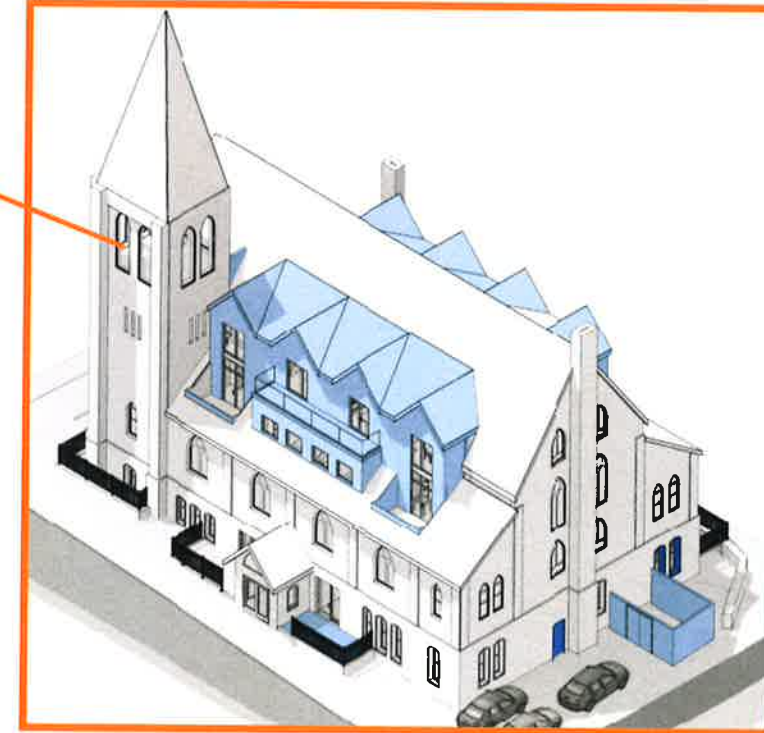
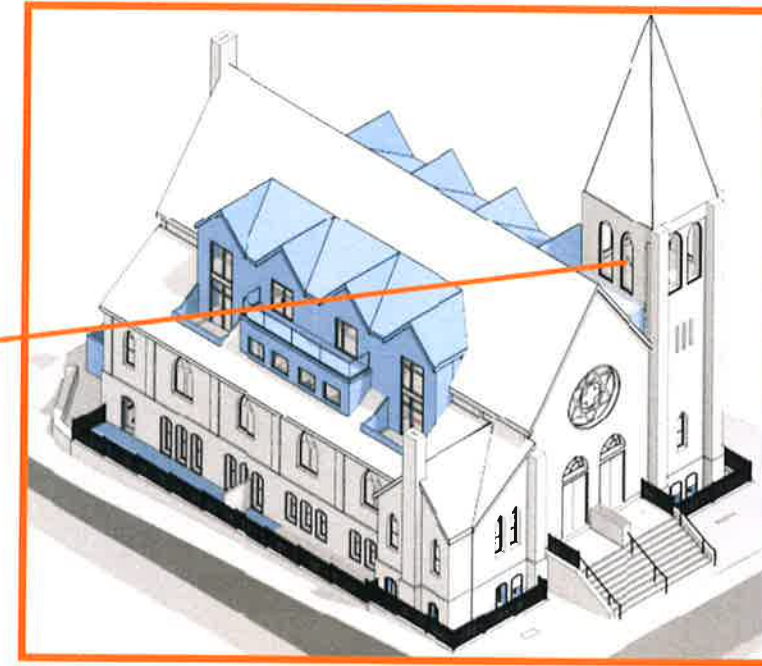
Upper Tower Windows



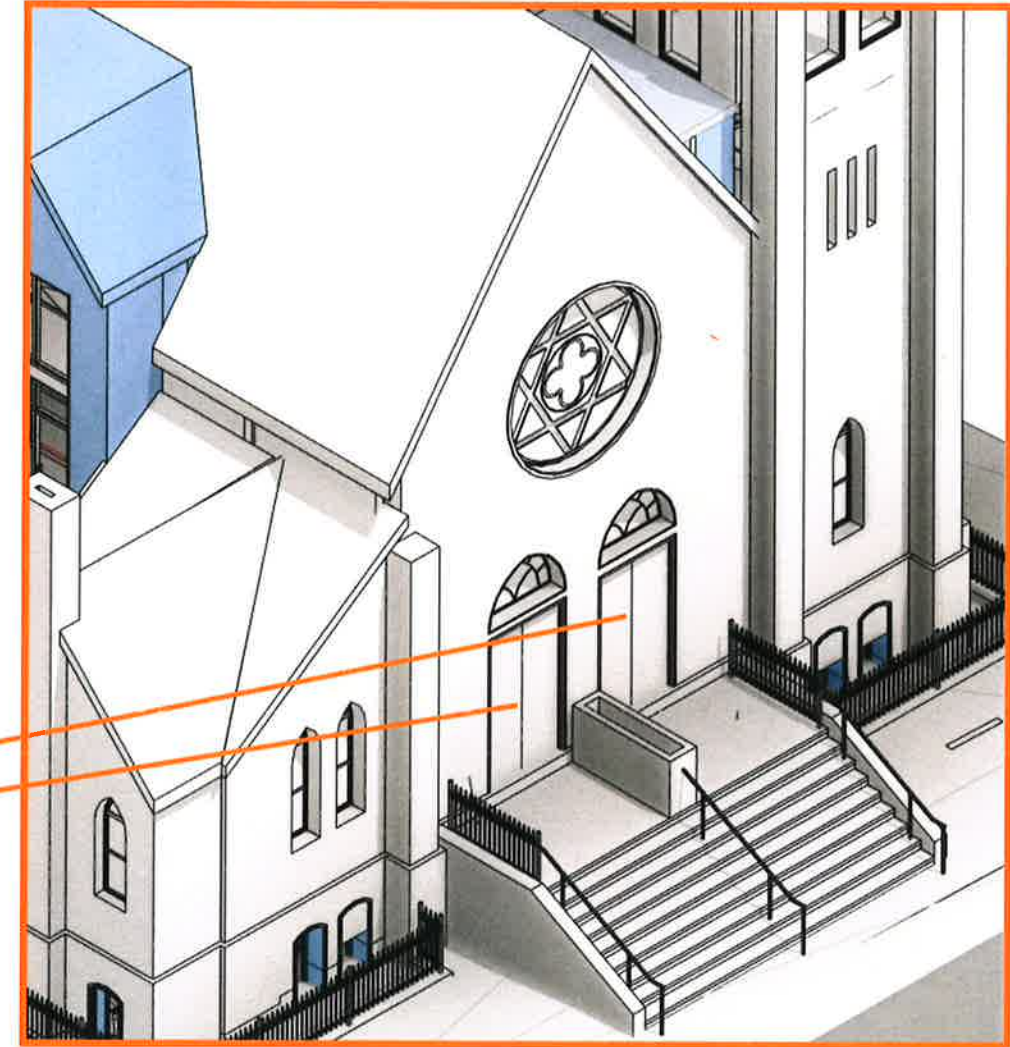
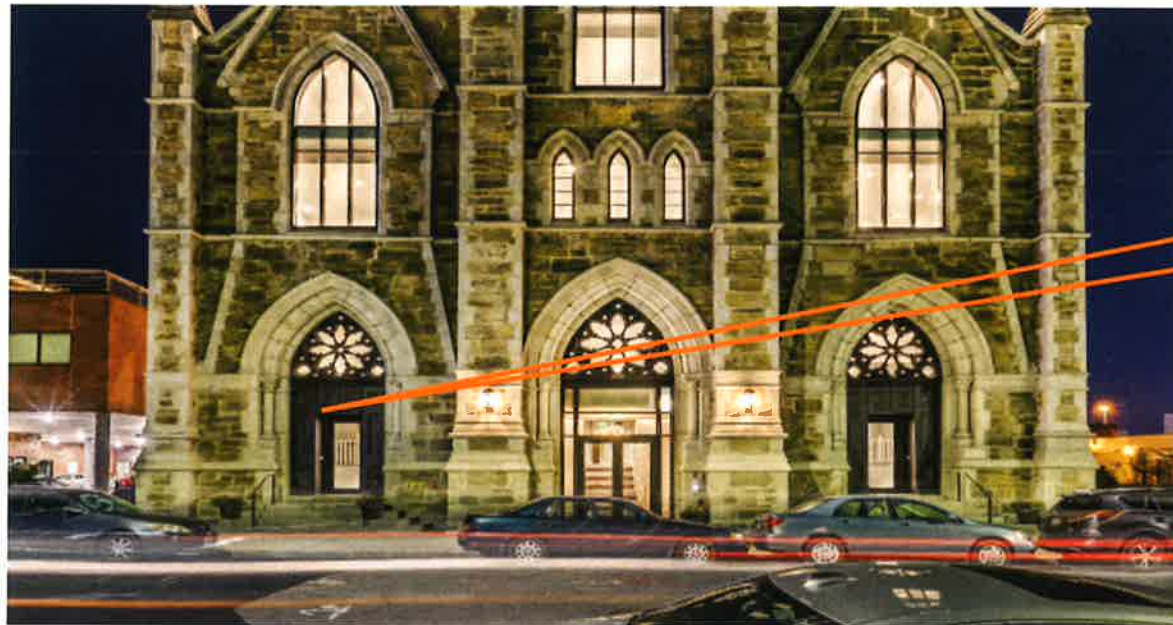
**Pella Contemporary Architect Series
(Or Equivalent)
Aluminum Clad Awning Windows
Custom Shape To Match Existing Opening
Intent to Reference Original Awning Louvers**

Material: Aluminum Clad Wood Frames

Glazing: Clear Insulated Glass



Proposed Alterations Front Street Entry Doors



Scope:

- Refurbish Existing Wood Doors
- Set in Open Position and Secure With Pins
- Insert New Insulated Glass Doors Behind Existing Doors

Proposed Alterations Spring Street Entry Doors



Scope:

- Remove Existing Non-Historic Storefront
- Replace with Glass Entrance With Metal Accent
- Glass Entrance By C.R. Laurence / Blumcraft (Or Equivalent)
- Existing Wood Paneling To Be Refurbished

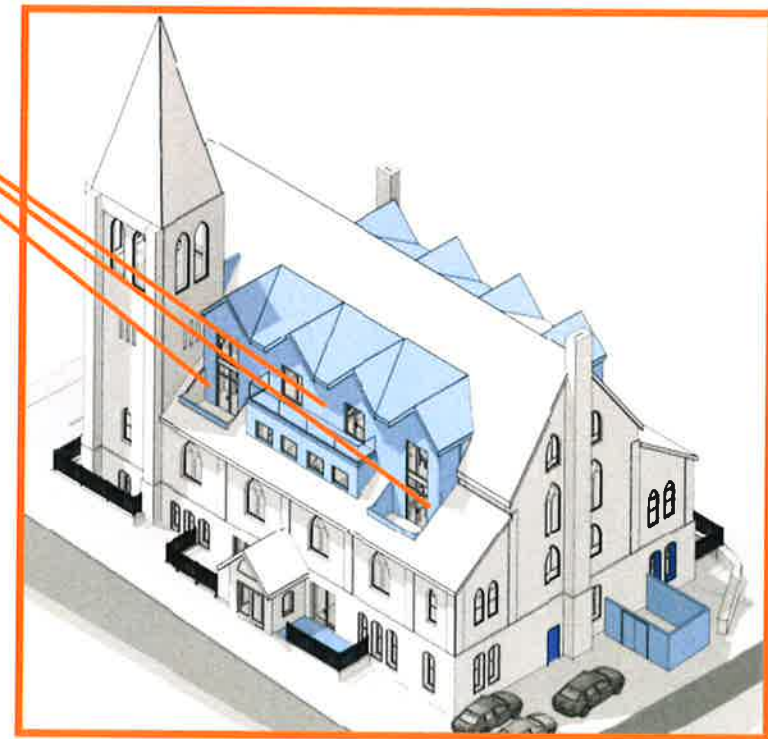
Exterior Lighting - Levels 3/4 Balconies



**Project Source - Black (Dark Sky Compliant)
LED Exterior Wall Sconce (Or Similar fixture)**

Product: Metal Sconce Downlight (Dark Sky Compliant)

Location: At New Dormer Balcony Doors Per Code



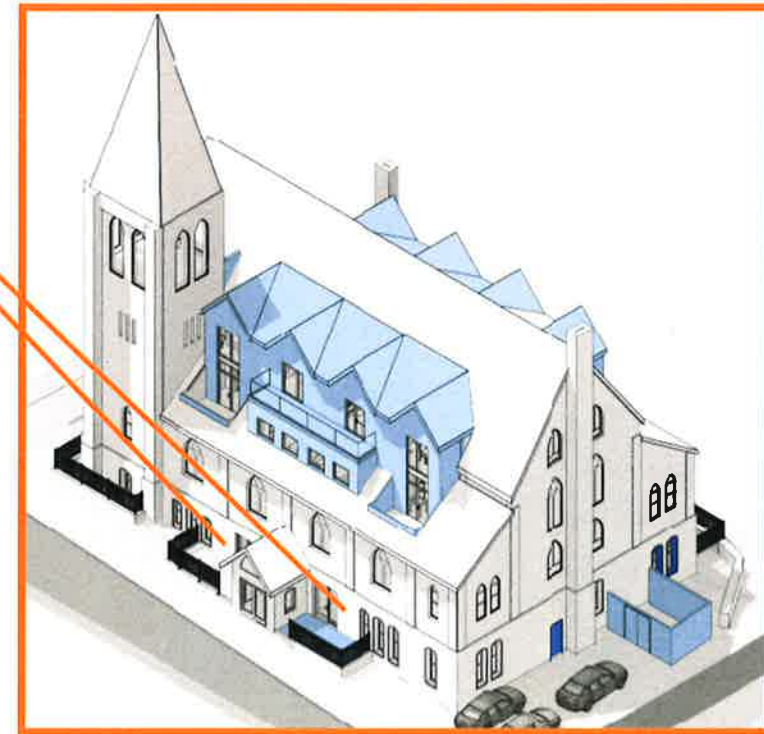
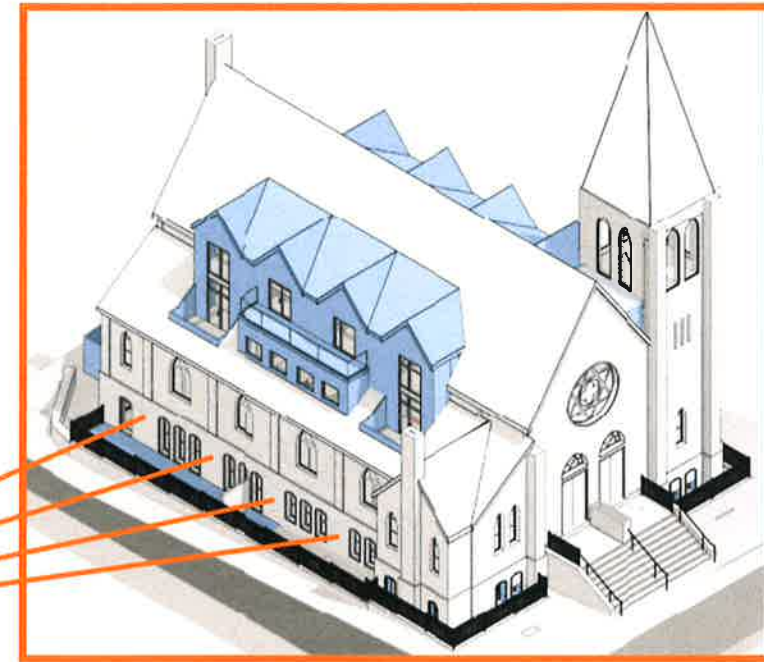
Exterior Lighting - Ground Level Terraces



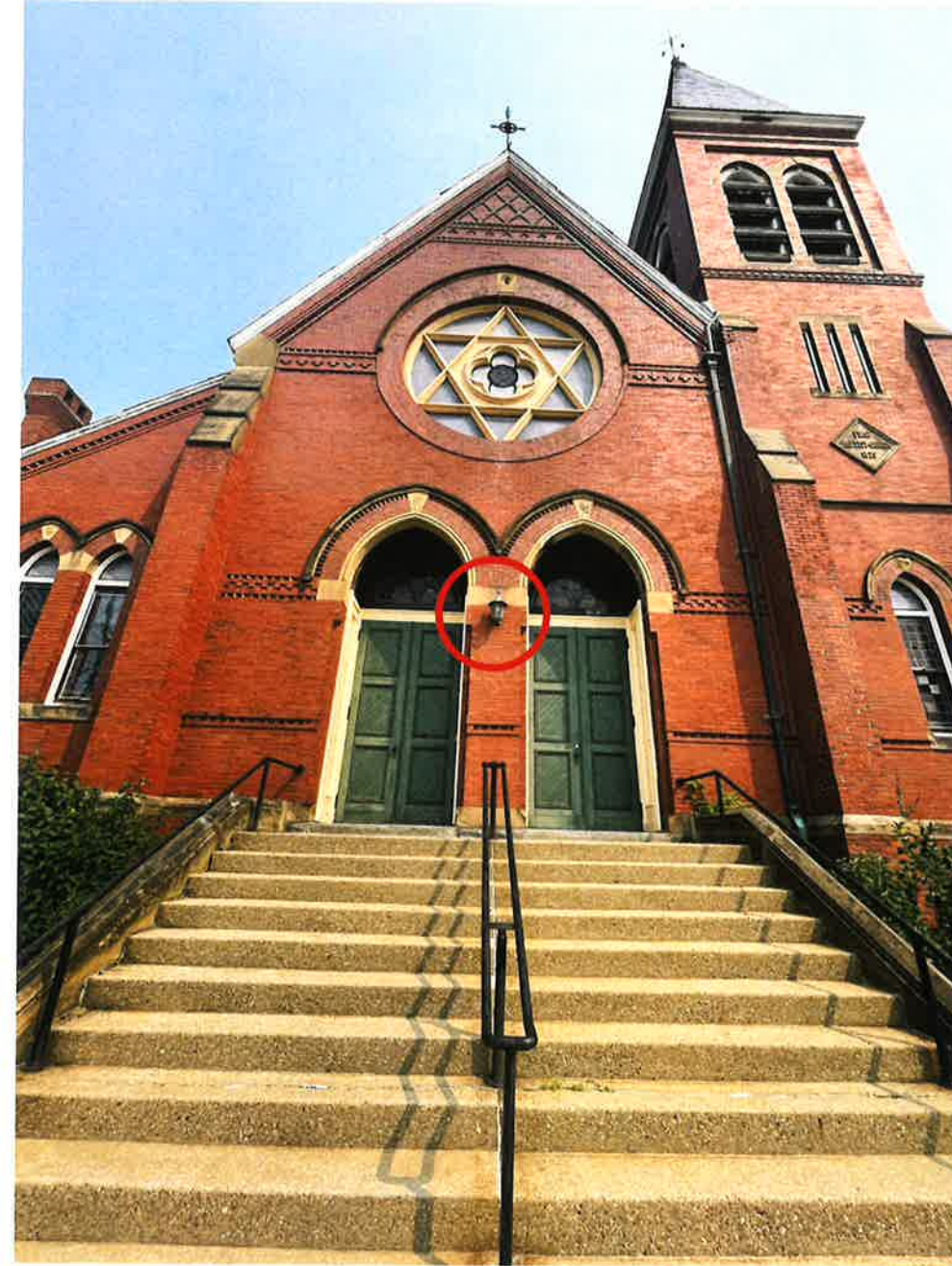
**Project Source - Black (Dark Sky Compliant)
LED Exterior Wall Sconce (Or Similar fixture)**

Product: Wall Sconce Downlight (Dark Sky Compliant)

Location: At Ground Level Terraces



Exterior Lighting



Scope:

Refurbish Existing Fixtures & Re-Install



THANK YOU!

EXONIAN PROPERTIES, LLC
FINEGOLD ALEXANDER ARCHITECTS