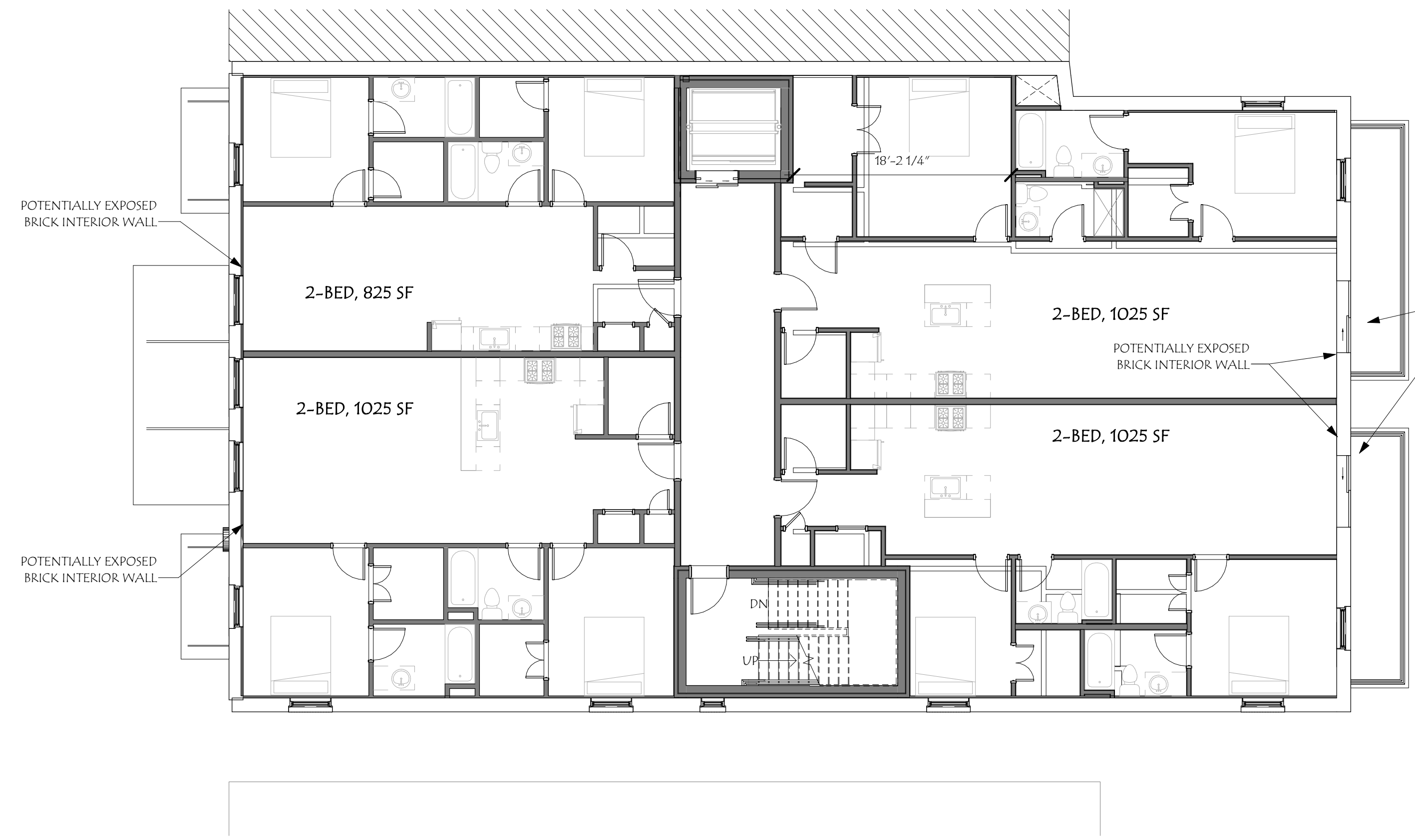


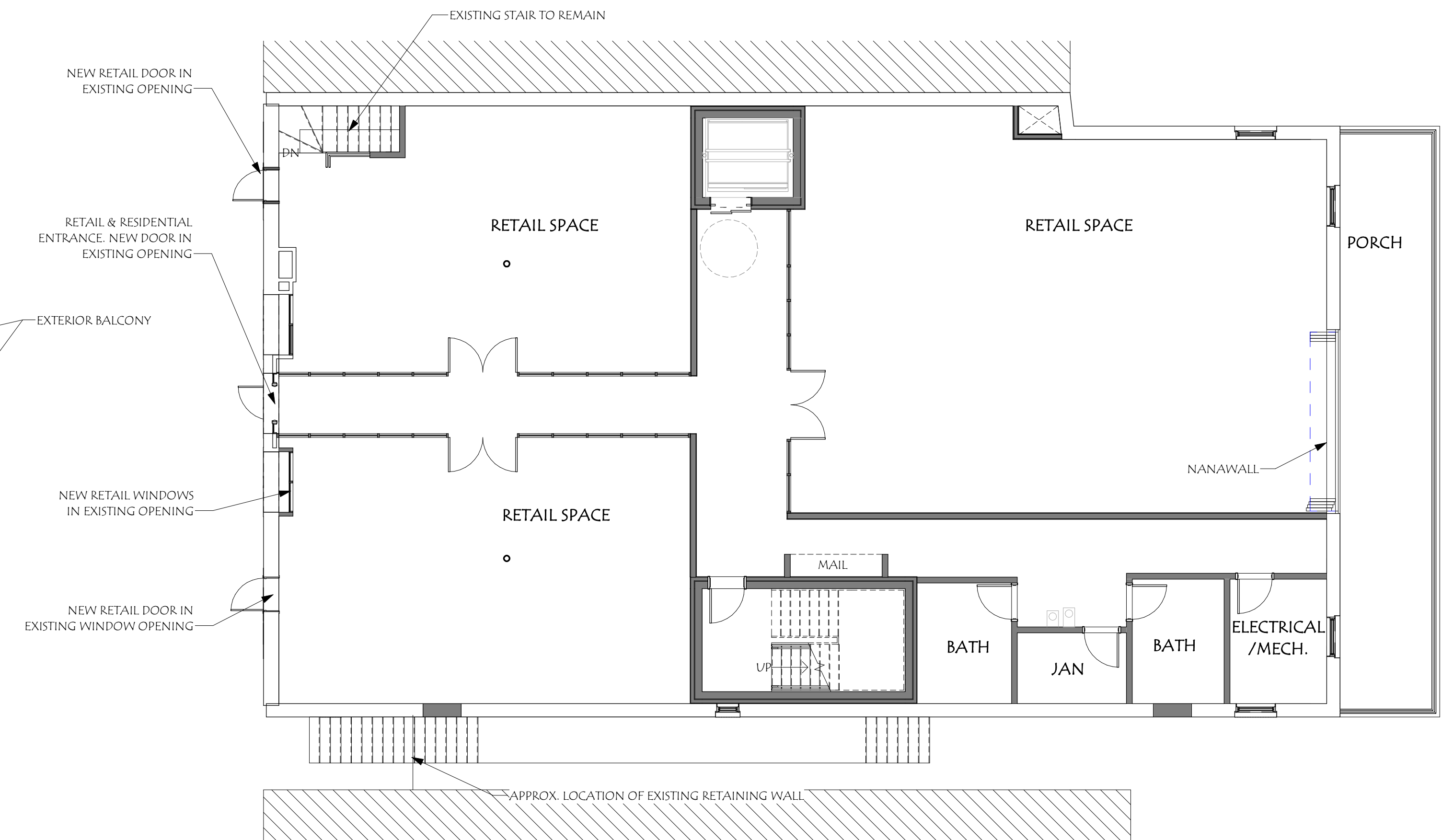
NOT FOR CONSTRUCTION

IOKA THEATER

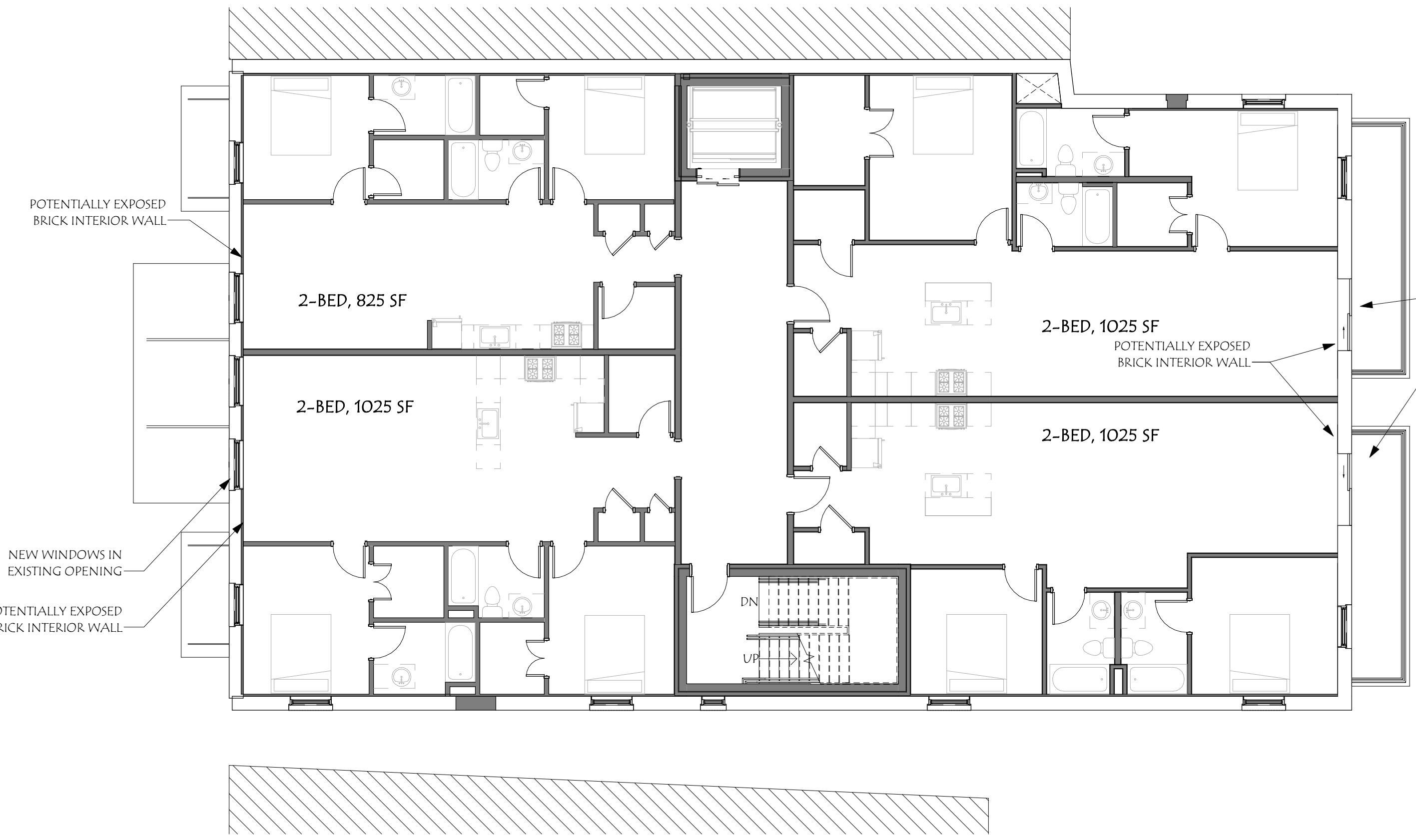
55 WATER STREET
 EXETER, NH 03833



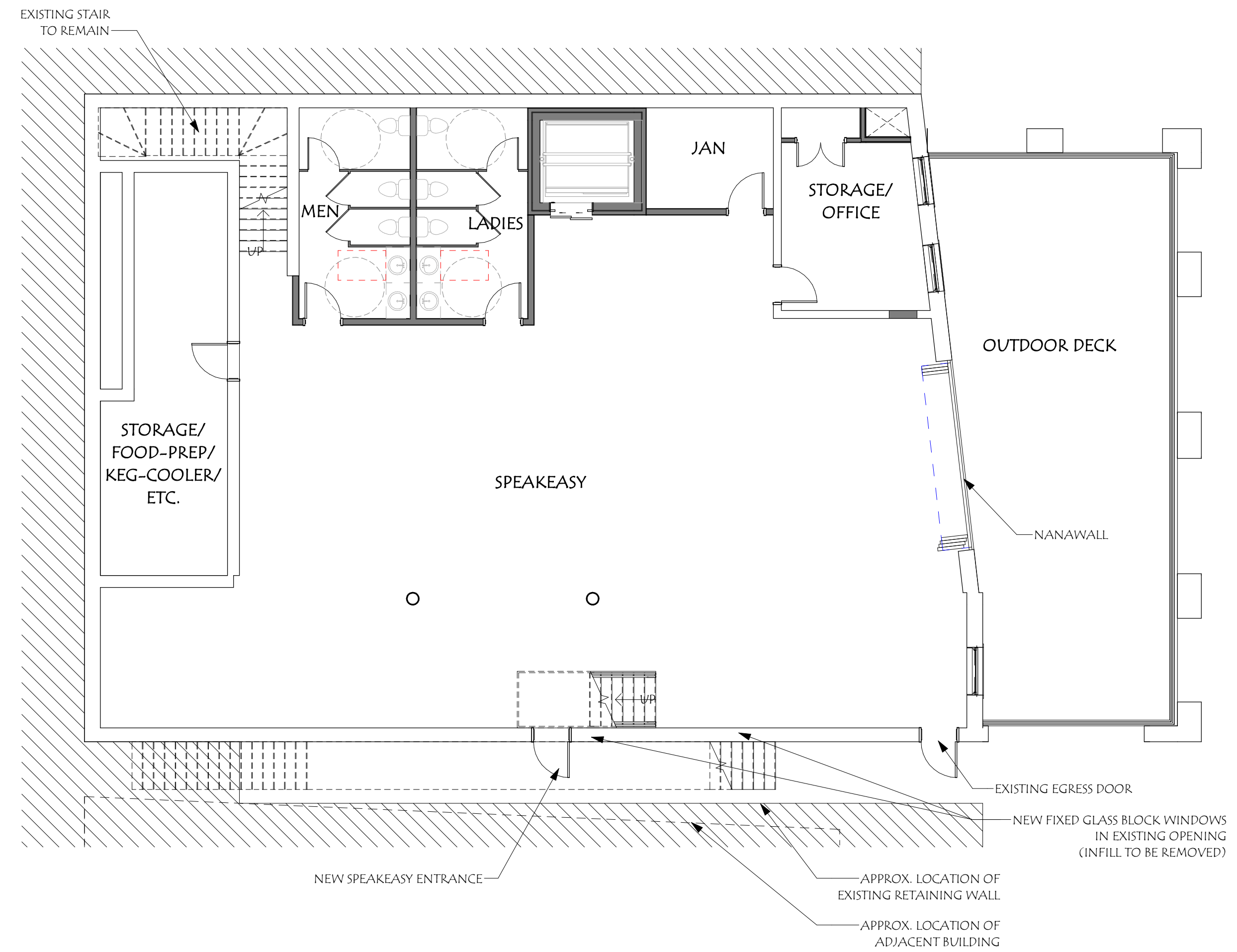
4 PROPOSED 3RD FLOOR PLAN
 1/8" = 1'-0"



2 PROPOSED 1ST FLOOR PLAN
 1/8" = 1'-0"



3 PROPOSED 2ND FLOOR PLAN
 1/8" = 1'-0"

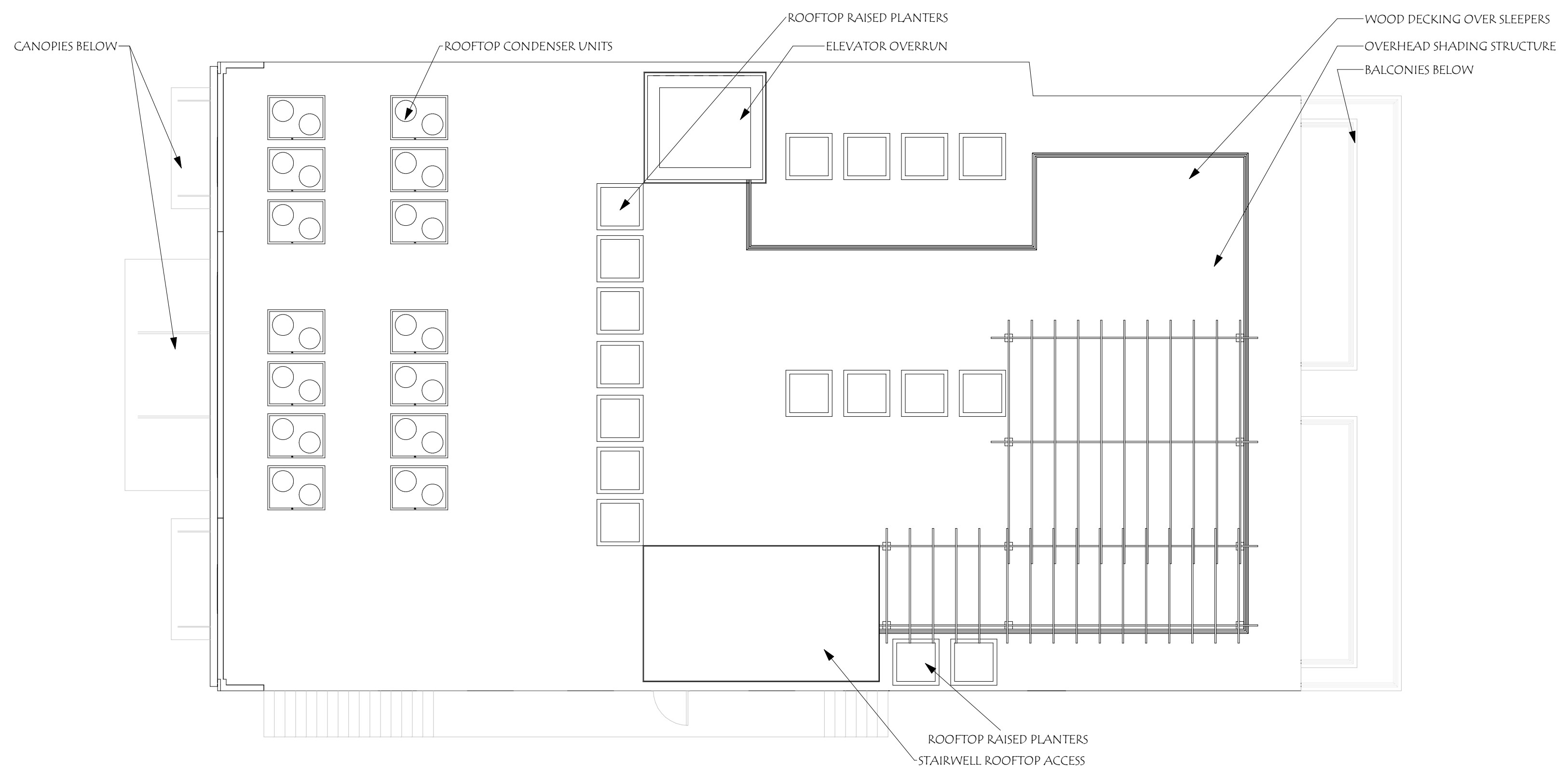


1 PROPOSED BASEMENT FLOOR PLAN
 1/8" = 1'-0"

Revisions:	Date
# Description	

Scale:	1/8" = 1'-0"
Drawn By:	WJB
Checked By:	CO, AW
Project No.:	2020016
Date:	06/18/20

Title:	FLOOR PLANS
Sheet No.:	1



1 PROPOSED ROOF PLAN
1/8" = 1'-0"



NOT FOR CONSTRUCTION

IOKA THEATER
55 WATER STREET
EXETER, NH 03833

Revisions:	#	Description	Date

Scale:	1/8" = 1'-0"
Drawn By:	WB
Checked By:	CO, AW
Project No.:	2020016
Date:	06/18/20

Title:	ROOF PLAN
	2

NOT FOR CONSTRUCTION

IOKA THEATER

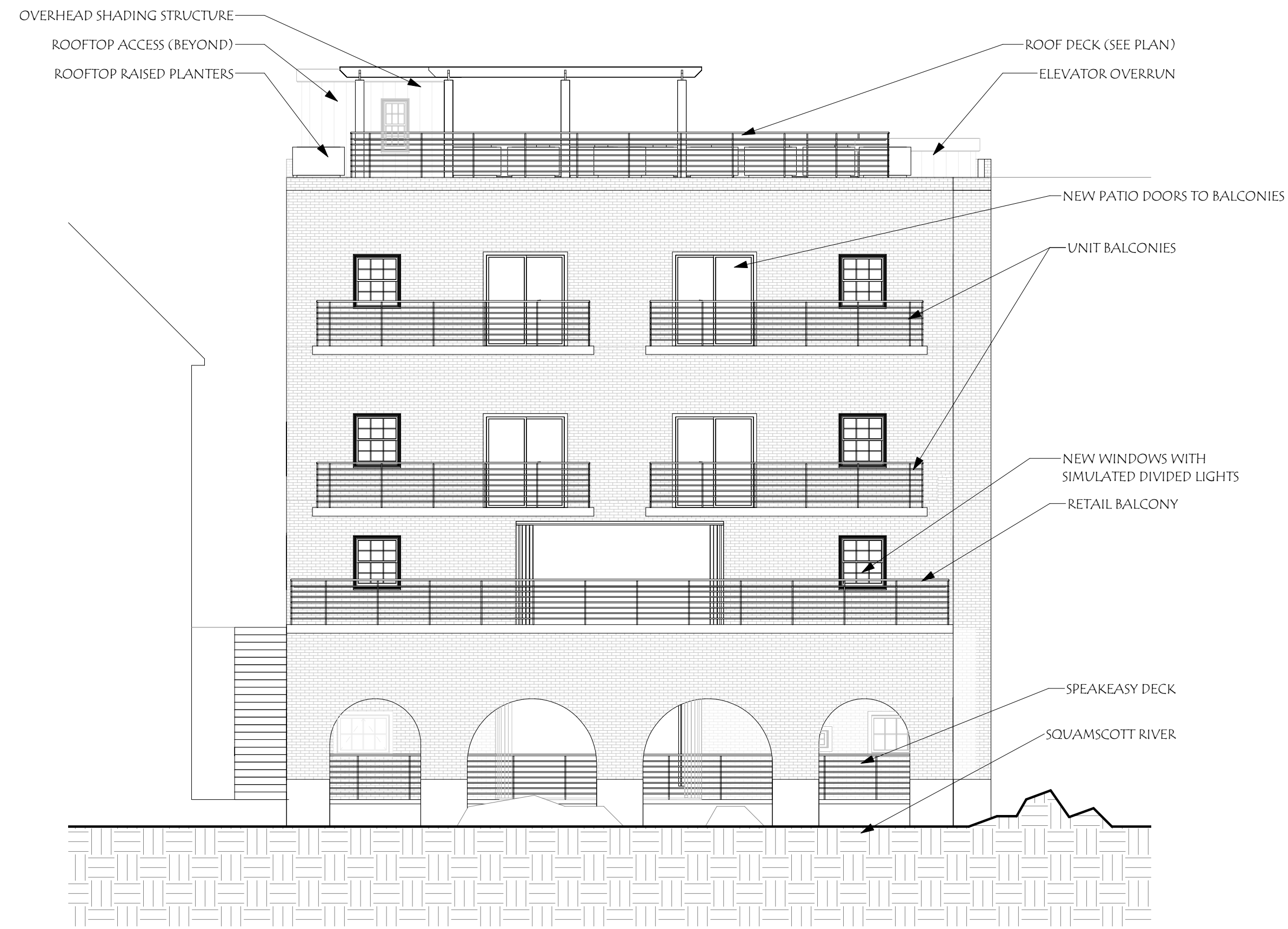
55 WATER STREET
 EXETER, NH 05855

Revisions:	#	Description	Date

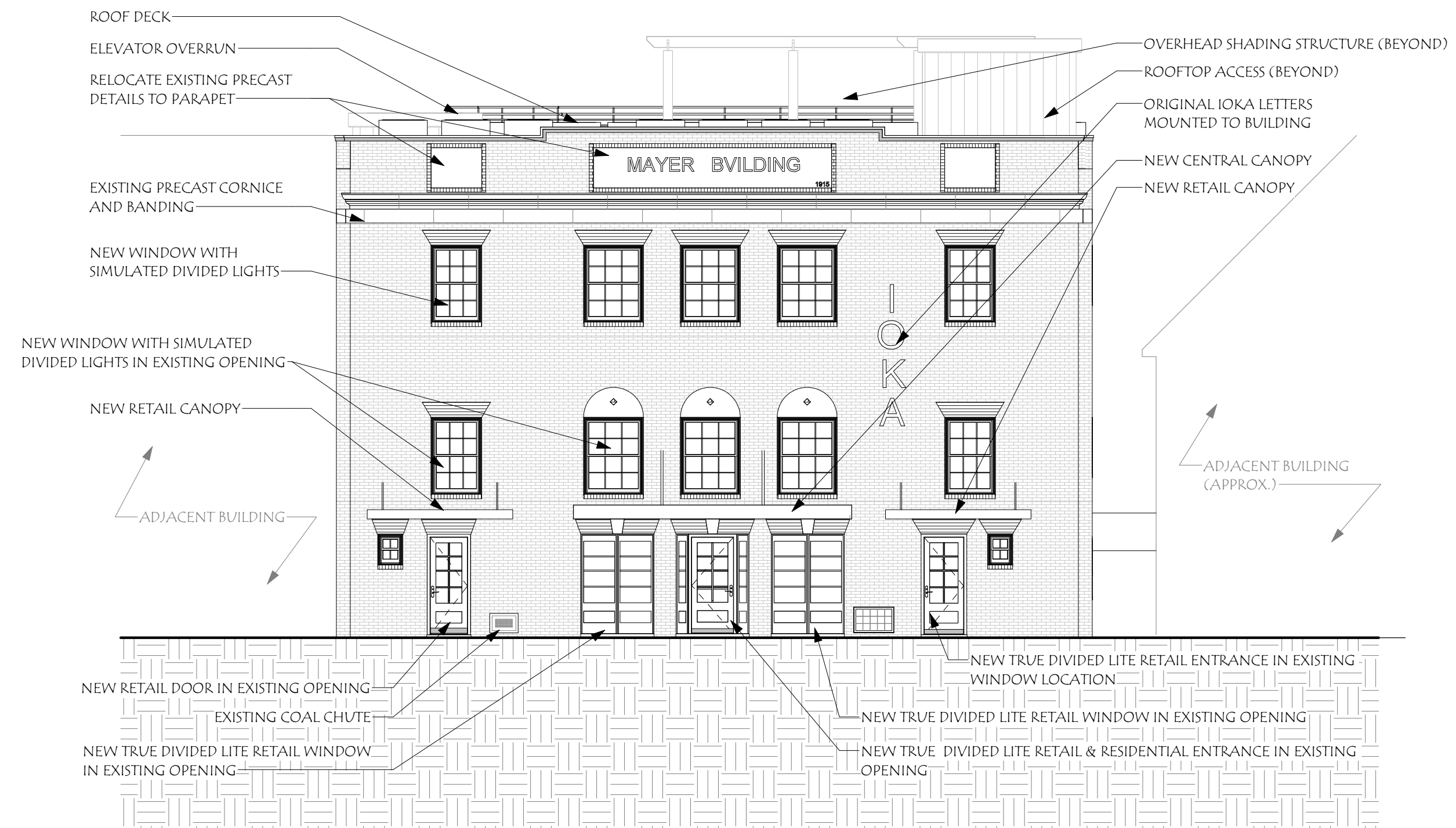
Scale:	1/8" = 1'-0"
Drawn By:	WB
Checked By:	CO, AW
Project No.:	2020016
Date:	06/18/20

Title:
ELEVATIONS

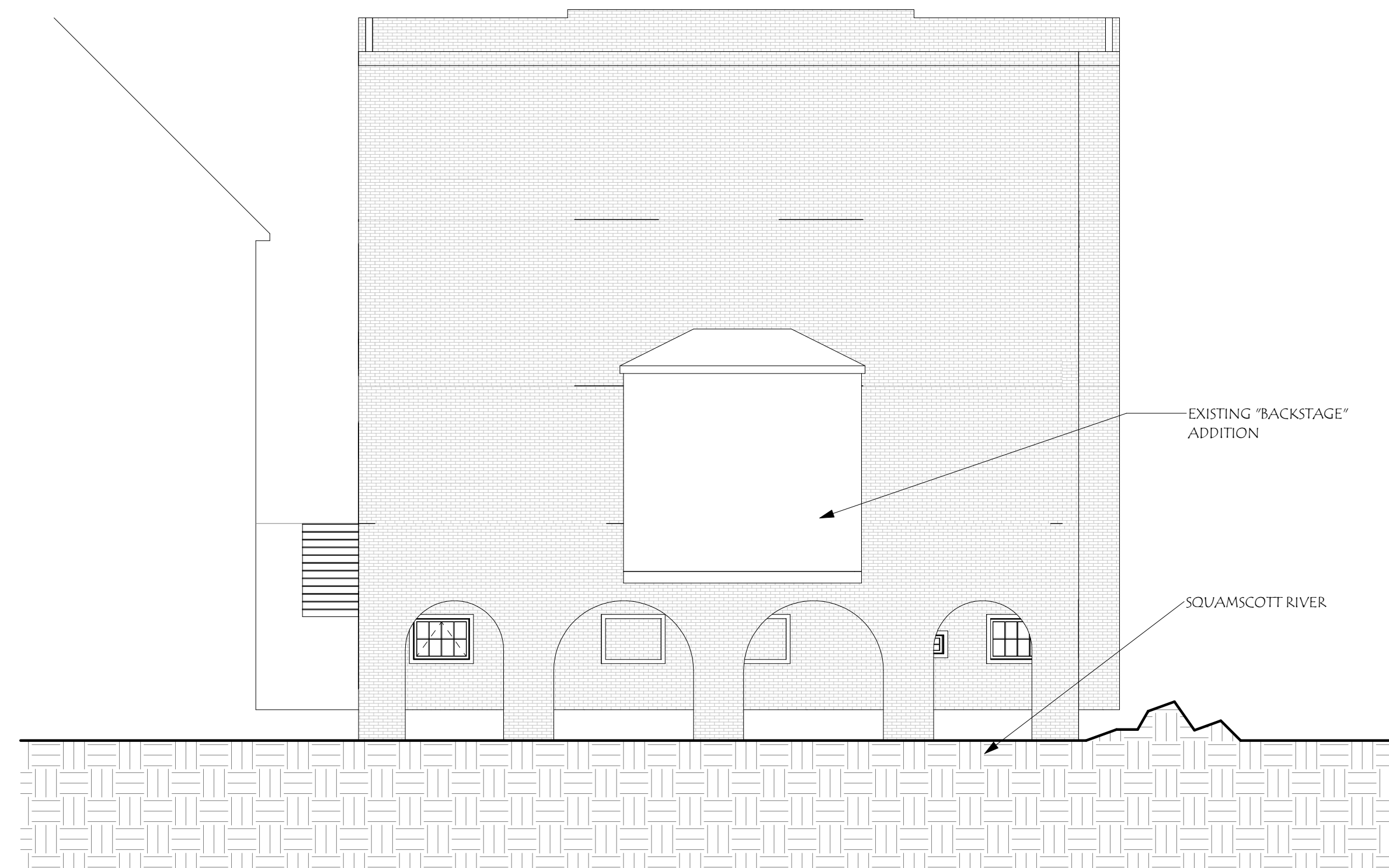
3



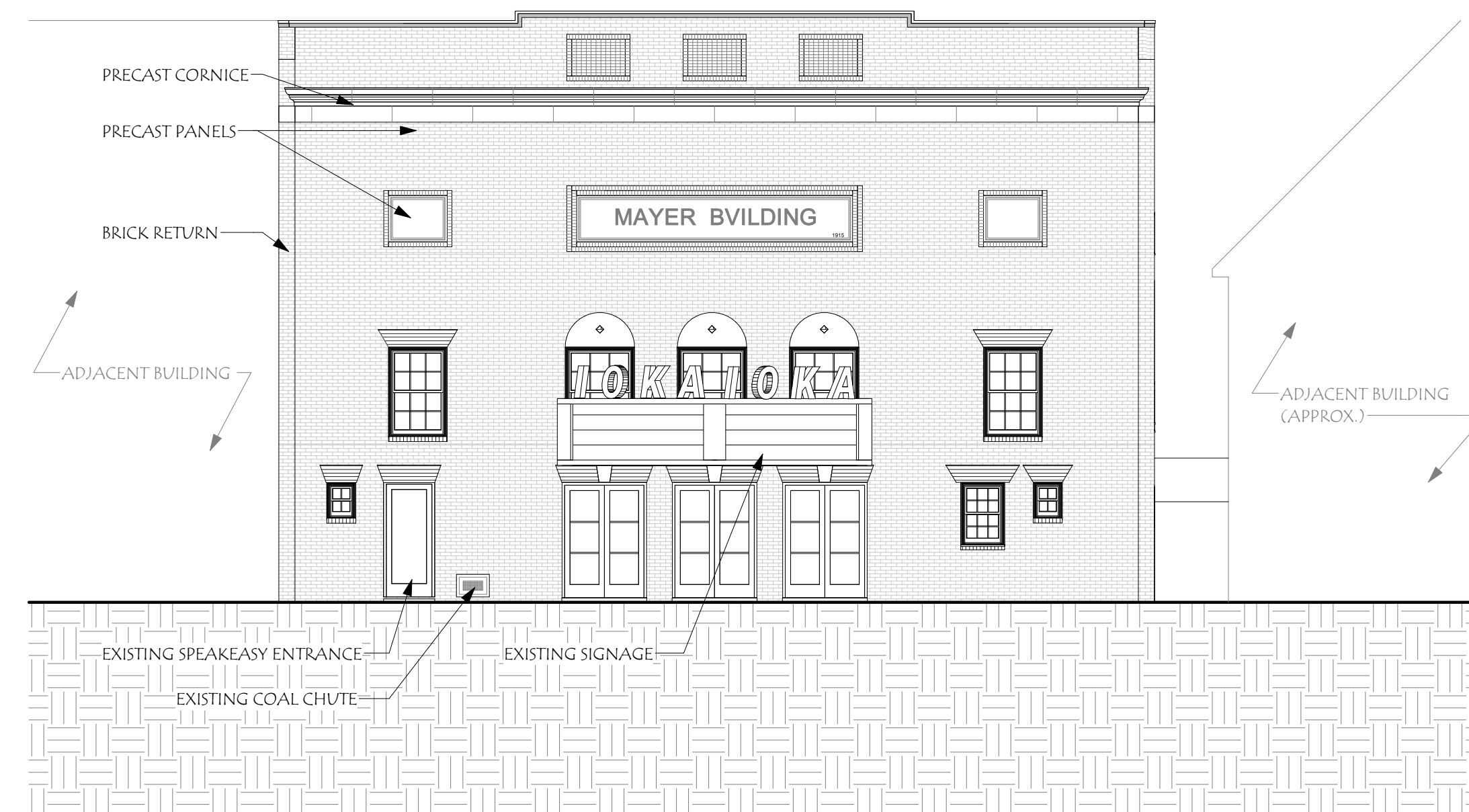
④ PROPOSED RIVER FRONT ELEVATION
 1/8" = 1'-0"



② PROPOSED STREET FRONT ELEVATION
 1/8" = 1'-0"



③ EXISTING RIVER FRONT ELEVATION
 1/8" = 1'-0"

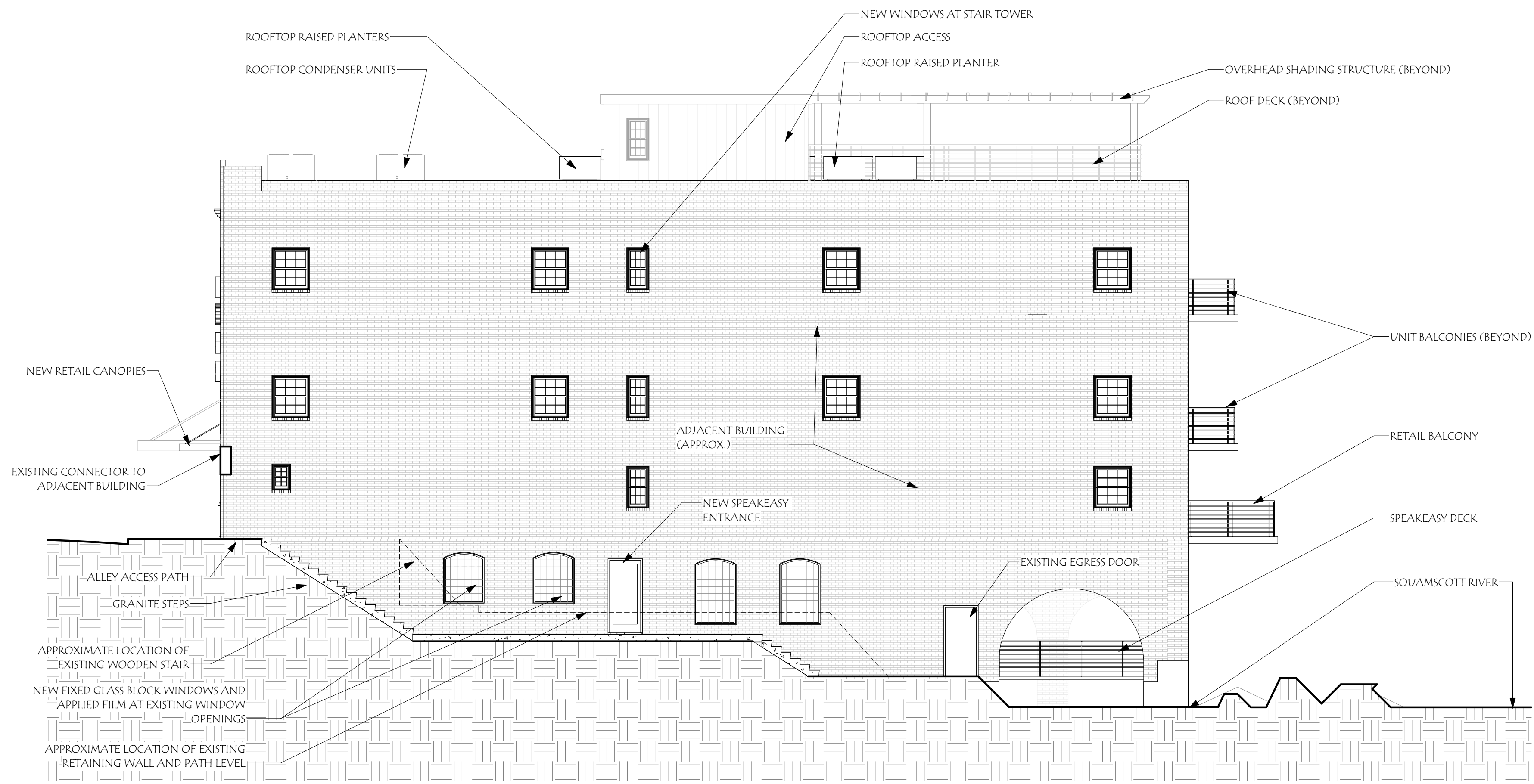


① EXISTING STREET FRONT ELEVATION
 1/8" = 1'-0"

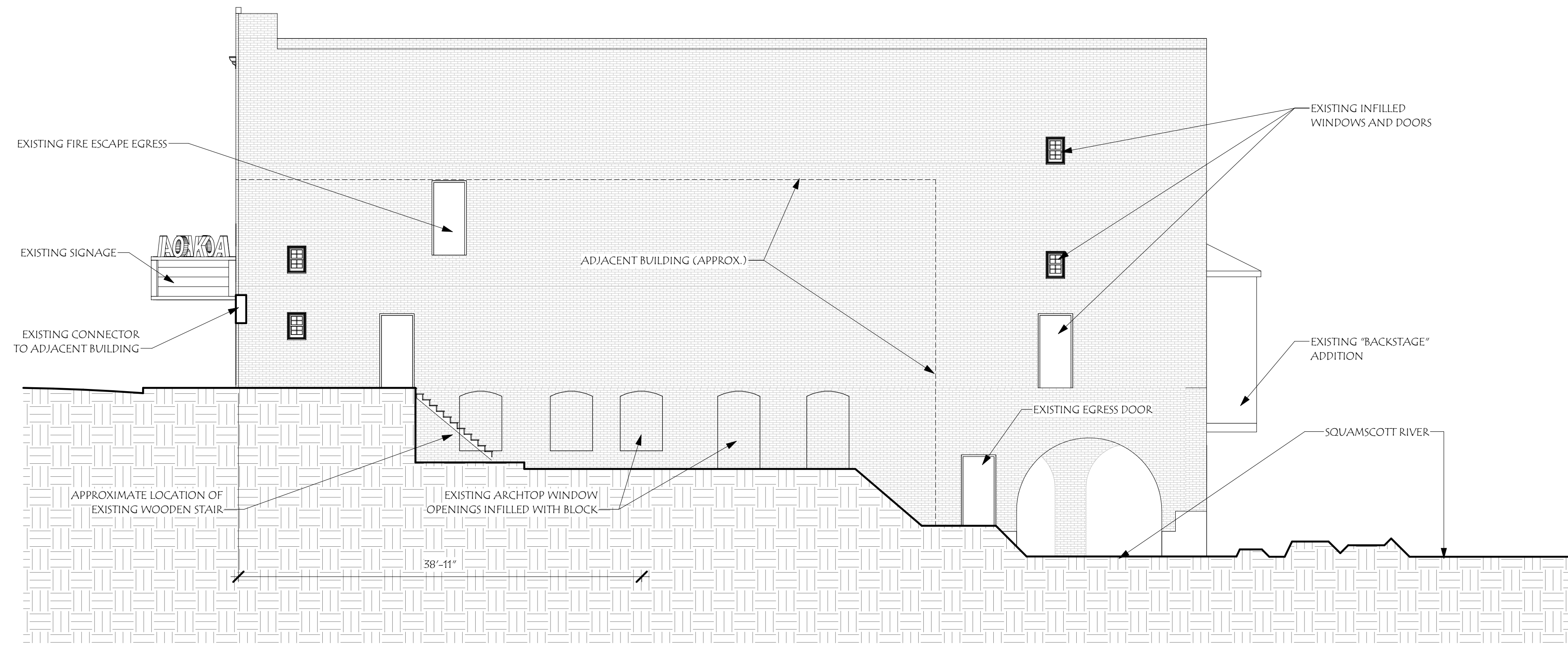
NOT FOR CONSTRUCTION

IOKA THEATER

55 WATER STREET
 EXETER, NH 05853



2 PROPOSED ALLEY SIDE ELEVATION
 1/8" = 1'-0"



1 EXISTING ALLEY SIDE ELEVATION
 1/8" = 1'-0"

Revisions:	#	Description	Date

Scale:	1/8" = 1'-0"
Drawn By:	WB
Checked By:	CO, AW
Project No.:	2020016
Date:	06/18/20

Title:	ELEVATIONS
Sheet No.:	4



NOT FOR CONSTRUCTION

IOKA THEATER
 55 WATER STREET
 EXETER, NH 05853

Revisions:	#	Description	Date

Scale:	WB
Drawn By:	CO, AW
Checked By:	2020016
Project No.:	06/18/20
Date:	

Title:	STREET RENDER
	5



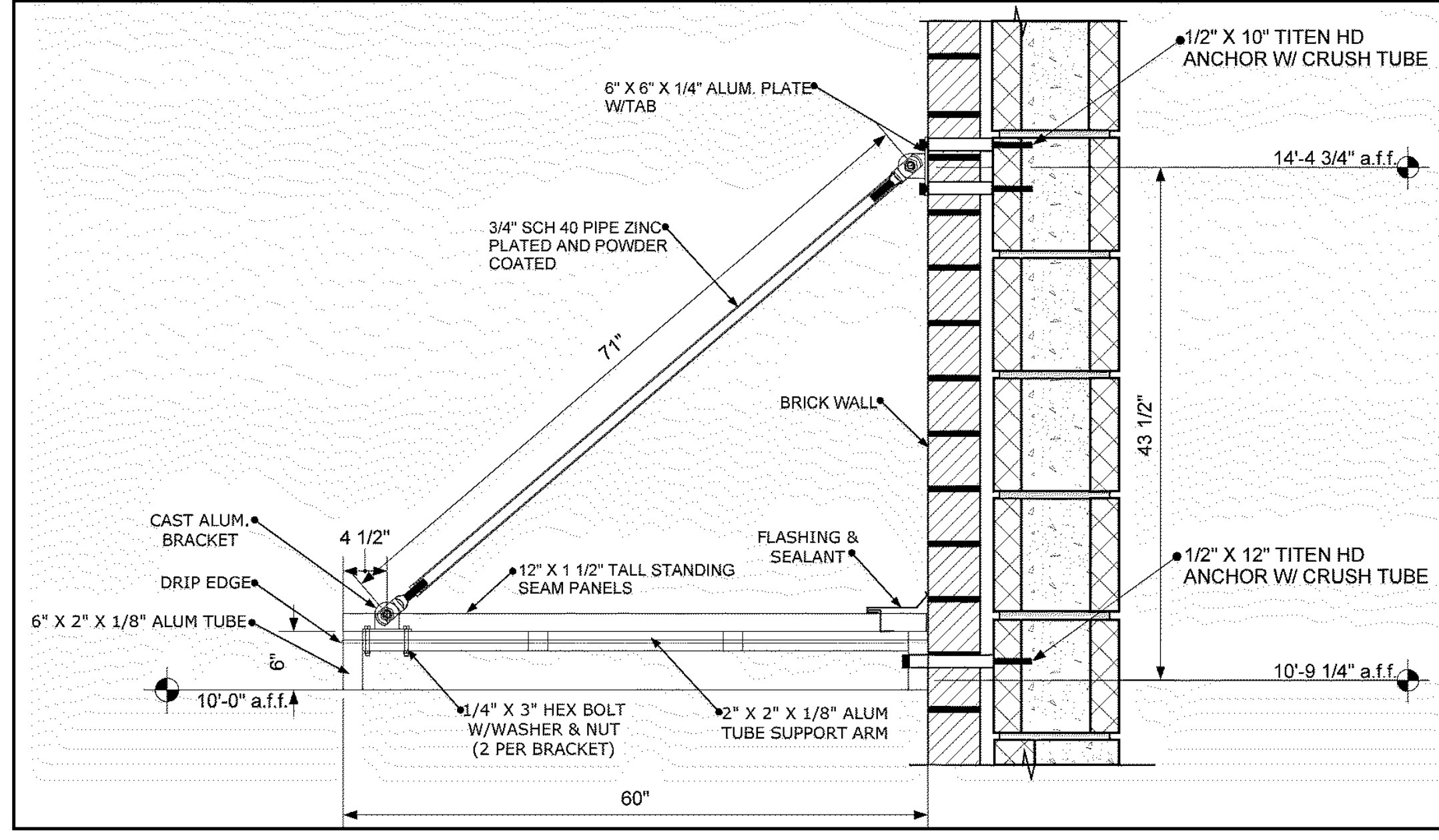
NOT FOR CONSTRUCTION

IOKA THEATER
 55 WATER STREET
 EXETER, NH 05833

Revisions:	#	Description	Date

Scale:	1/8"
Drawn By:	CO, AW
Checked By:	2020016
Project No.:	06/18/20
Date:	

Title:	REAR RENDER
	6



6



3



5



2



4



1

NOT FOR CONSTRUCTION

IOKA THEATER

55 WATER STREET
 EXETER, NH 03833

Revisions:

#	Description	Date

Scale:	1/8" = 1'-0"
Drawn By:	PPS
Checked By:	ALW
Project No.:	2020016
Date:	06/18/20

Title:	CANOPY IDEAS AND INSTALLATION DETAIL
Sheet No.:	7

Exterior Finish



A strong alternative to vinyl, our Ultrex® pultruded fiberglass exterior finish is applied through a patented process to provide a superior, consistent finish. The American Architectural Manufacturers Association (AAMA) awards certifications to materials that pass numerous, rigorous tests. These tests simulate the harsh conditions that a finish will encounter throughout the life of the window or door. Passing these specification tests and achieving AAMA 624 verification gives independent verification that the Ultrex finish is best in class among fiberglass products.

Built for durability and low-maintenance, our Ultrex finish is 3x thicker than competitive finishes, with a smooth consistency and strong finish that resists fading, chalking, peeling and cracking, even in the darkest colors. If a design change calls for a new color down the road, our material can be painted without voiding our warranty. Six colors are available in neutral and dark tones.

Selected: Pebble Gray



Pebble Gray

*Finish samples are approximate and colors on screen can vary. Visit your local dealer to see actual color samples.

5

Exterior Trim



Get the performance of Ultrex® fiberglass in convenient, factory-cut exterior trim made for easy installation and superior performance over time. Exterior trim is available in colors to match our exterior window finish, and several trim styles. Choose flat-style for a clean, simple look or brick mold-style for a more traditional aesthetic.

Selected: Brick Mould



Brick Mould

4

Divided Lites

The look of multiple, individual panes of glass is popular in a wide range of architectural styles. Simulated divided lites and grilles between the glass mimic the look of these individual panes of glass without sacrificing energy efficiency.

Grilles-between-the-Glass (GBGs)



Grilles are permanently installed between the glass panes for low-maintenance and easy cleaning. Choose from 6 exterior colors and 3 interior colors.

Simulated Divided Lite (SDL)



An energy-efficient way to create the look of divided lites, SDL bars are permanently adhered to both sides of the glass.

Simulated Divided Lite with Spacer Bar (SDLS)



Paired with SDL bars on the exterior of the glass, a spacer bar is installed between the glass, creating an even closer match to the Authentic Divided Lite look.

3

Benefits of Pultruded Fiberglass



- Expands and contracts at virtually the same rate as glass, so it works with glass rather than against it
- Maintains shape even in harsh climates with regular exposure to temperature variation, wind, rain, or snow
- First and only composite to achieve AAMA 624 verification, meaning that the finish has passed numerous rigorous tests
- Resists chipping, chalking, or fading, even in darker hues
- Non-conductive and non-corrosive
- Engineered to maintain its look even years after installation

2

Features of the Elevate Double Hung Window



INTERIOR

EXTERIOR

- Available in heights up to 7 feet or widths up to 4.5 feet
- Low-profile locking mechanism for smooth operation
- Insert replacement option is available to fit seamlessly into existing window openings
- Sashes tilt in for easy cleaning of both sides of glass from indoors
- Available with IZ3 coastal/hurricane certification
- CE certified

1

NOT FOR CONSTRUCTION

IOKA THEATER

55 WATER ST.
EXETER, NH

Revisions:	#	Description	Date

Scale:	1/8" = 1'-0"
Drawn By:	CMO
Checked By:	ALW
Project No.:	2020016
Date:	06/10/20

Title:	MARVIN WINDOW CUT SHEETS
	8


MARVIN "ULTIMATE" COMMERCIAL ALUMINUM-CLAD DOOR

MARVIN SIGNATURE™ ULTIMATE

Clad Color Options

Our low maintenance clad-wood products feature an extruded aluminum exterior finished in commercial-grade high performance PVDF fluoropolymer paint. Because our finish meets the toughest American Architectural Manufacturers Association (AAMA) 2605 standard, you can expect even our richest and boldest hues to resist fading and chalking even in harsh sun or extreme weather conditions. A palette of nineteen color options spans from muted, earthy tones to bold, rich colors and three pearlescent finishes. Custom color matching is also available to meet any design vision.

The American Architectural Manufacturers Association (AAMA) awards certifications to materials that pass numerous, rigorous tests. These tests simulate the harsh conditions that a finish will encounter throughout the life of the window or door. Passing these specification tests and achieving AAMA verification provides independent verification that our finishes are best-in-class.



Selected: Pebble Gray


Pebble Gray

ANY COLOR YOU WANT

5

MARVIN SIGNATURE™ ULTIMATE

Casings

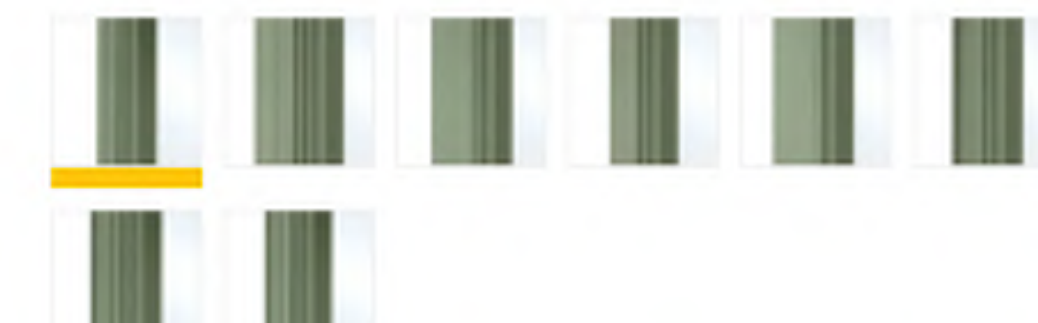


Brick Mould

Factory-applied casing for clad-wood windows and doors provides job-site time savings, plus better performance and consistency thanks to our extruded aluminum material finished with a durable commercial-grade paint. Choose from eight exterior casing styles to complement a project's character and architectural style.

- Clad-wood products come standard without exterior casing, but if casing is desired, a dealer can help choose the right design and will specify it at the time of order
- All wood windows and doors come standard with wood Brick Mould-style casing applied, but if flat Casing-style is desired, it is available and should be specified when ordering

Selected: Brick Mould




4

Product Design Options

DIVIDED LITES


The look of multiple, individual panes of glass in a window sash is popular in a wide range of architectural styles—from historic replications to modern farmhouses. For those who seek historical accuracy, authentic divided lites utilize many individual glass panes in a single window. Simulated divided lites, available in a number of different styles, mimic the look of individual panes of glass in a window sash without sacrificing the energy efficiency of a single pane of glass.

Authentic Divided Lite (ADL)




Separate pieces of glass are glazed between muntin bars - the way windows have been made since the beginning but with Marvin's updated design to increase energy efficiency.

Simulated Divided Lite (SDL)




An energy-efficient way to create the look of authentic divided lites, SDL bars are permanently adhered to both sides of the glass and are available with or without a spacer bar installed between the glass to create even more depth that resembles an ADL.

Simulated Divided Lite with Spacer Bar (SDLs)



Paired with SDL bars on the exterior of the glass, a spacer bar is installed between the glass, creating an even closer match to the Authentic Divided Lite look.


Grilles-between-the-Glass (GBGs)



Grilles are permanently installed between the glass panes for a low-maintenance, smooth exterior and easy cleaning. Choose from 13 exterior colors and 4 interior colors.

3


Benefits of Extruded Aluminum



- Long-lasting color and performance
- Can create custom profiles, providing flexibility in matching details without compromising on performance
- Offers a low-maintenance alternative to wood

2

Features of the Ultimate Commercial Door



- Available in wood or clad-wood styles to match design needs
- Optional commercial hardware package includes: closer, mortise lock or rim device, kick plate, and removable mullions
- Hardware routs and preps can be ordered
- Optional Raised or Flat Panels offer an upscale look
- Intermediate Rail available for a two lite panel
- Three ADA-compliant sill options, available in three finishes
- Clad style is CE certified
- Available in 1 3/4" or 2 1/4" panels

INTERIOR EXTERIOR

1

NOT FOR CONSTRUCTION

IOKA THEATER

55 WATER ST.
EXETER, NH

Revisions:	Description	Date
#		

Scale:	1/8" = 1'-0"
Drawn By:	CMO
Checked By:	ALW
Project No.:	2020016
Date:	06/10/20

Title: **MARVIN DOOR CUT SHEETS**

9