



Leathers & Associates

725 N. A1A
Jupiter, FL 33477
Phone # 877-564-6464

Playground Name & Location

Inspected By: Leathers CPSI

Inspected Date: 03/31/2016

What is the Name & Location of the playground?

Planet Playgroud - Exeter, NH

What year was the playground built?

09/15/1998

Who is performing the inspection?

Dave Johnson

Inspection Approved By

Marc Leathers

General Playground

Inspected By: Leathers CPSI

Inspected Date: 03/28/2016 03:51:57 PM

Overview

Notes

This is not a full playground audit, but a subjective assessment of your playgrounds condition and our professional recommendations.





General Observations

Notes

This assessment is based on a site visit meeting with Michael Favreau. The playground is 17.5 years old. The playground should be expected to last around 20 years with proper maintenance. It's apparent from its condition that this playground is a well-used attraction in the area. There is a strong emotional connection with the community and the playground.



Is playground signage provided, secure and in good condition	Yes
Main support posts	Wood
Support Post Size	Round Post 8"
Post treatment	Unknown
Support Posts Condition	The Main Support Posts are in medium condition. Some signs of weathering at tops
Support Post Recommendations	Notes

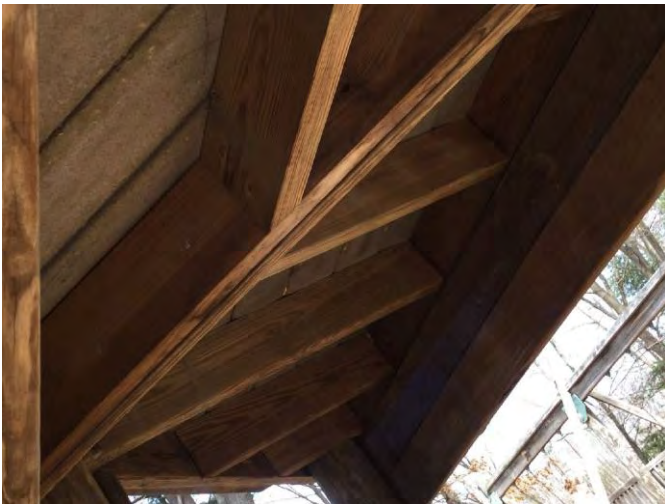
To bring this playground up to 21st century standards, we would recommend that existing posts be replaced with structural plastic. Although the existing posts could be stained/sealed with solid body stain & sealer and filled with an EPL coating, this would probably extend the life of wooden posts only 10-15 years. In addition, regular maintenance would be required to prevent accelerated deterioration.





Framing	Wood
Framing Size	2x6 Wood
Framing treatment	Unknown
Framing Condition	The framing is in medium condition. Has some splintering but not structural
Framing Recommendations	Notes

To achieve long-term viability and low maintenance for the playground, we would recommend that the framing be replaced with structural plastic. As with the main support posts, staining and sealing exposed surfaces with solid body stain would only be a short-term fix with significantly limited longevity.



Decking	Composite
Decking Size	2x6

Decking treatment	N/A
Decking Condition	The decking is in medium condition. Some splintering but not structural.
Decking Recommendations	Notes
Replace with recycled plastic	



Handrails 2-5 yr olds (Tot)	Wood
Handrail Size 2-5	2x6
Handrail Height 2-5	38.25
Handrail treatment 2-5	Unknown
Handrail Condition 2-5	The handrails are in poor condition and have severe splintering

Handrail Recommendations 2-5

Notes

Replace with recycled plastic



Handrails 5-12 yr olds

Wood

Handrail Size 5-12

2x6

Handrail Height 5-12

38.25

Handrail Treatment 5-12

N/A

Handrail Condition 5-12

The handrails are in poor condition and have severe splintering

Handrail Recommendations 5-12

Notes

Replace with recycled plastic

Handrail Posts

Wood

Handrail Post Size

2x4

Handrail Post treatment

N/A

Handrail Posts Condition

The handrail posts are in poor condition. Has major splintering and some structural issues.

Handrail Posts Recommendations

Notes

Replace with recycled structural plastic.



Balusters Materials & Size

Pressure treated wood 2x4's.

Balusters Condition

The balusters are in poor condition (severe splintering & wear).

Baluster Recommendations

Notes

Replace with powder coated pipe balusters.





Maze Cubes	Wood framing and composite decking.
Maze Cube Size	24"
Maze Cube Condition	The maze cubes are in medium condition (minor splintering & wear).
Maze Cube Recommendations	Notes
Rebuild with current style larger maze cubes using structural plastic framing and recycled plastic decking.	



Accessible Ramps	Notes
Expand existing ramps and create an updated design that would incorporate additional ramps to create greater accessibility.	



Fence Posts

Wood pressure treated 4x4's

Fence Framing

Pressure treated wood

Fence Pickets

Pressure treated 5/4

Names on Fence Pickets

Some

Fence Condition

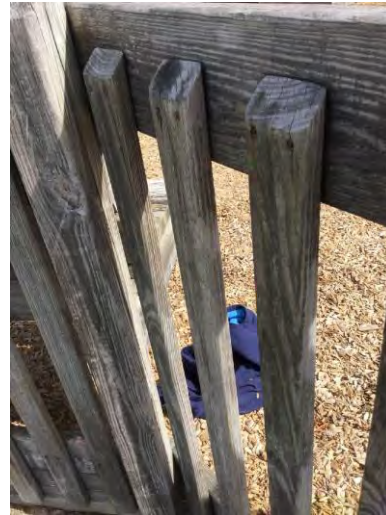
The fence is in poor condition (major splintering, missing pickets and wear).

Fence Recommendations

Notes

Replace with new all plastic fence.





Low Perimeter

N/A

Low Perimeter Condition

Perimeter is in good condition.

Low Perimeter Recommendations

No Notes

Safety Surfacing

Engineered wood fiber

Safety Surfacing Condition

Safety surfacing is in medium condition. Some areas are not at a sufficient depth.

Safety Surfacing Recommendations

Notes

Make sure the finished safety surfacing continues to meet all safety requirements. The park maintenance crews have done a great job in maintaining a uniform and compliant safety surface on the playground. Additional EWF has been added each year to maintain proper depth.



Is the playground area free of debris and broken glass

Yes

Are sidewalks, walkway areas and other related paths in good condition with no potential tripping hazards noted

Yes

Manufactured Slides

Inspected By: Leathers CPSI

Inspected Date: 03/28/2016

Slide #1 (Type & Condition)

Notes

Left Turn Tube Slide



Slide #1 Compliance

Compliant

Slide #1 Is the slide exit height between 7"

Non-Compliant

-15" from minimum safety surfacing.

Exit height is greater than 15" from safety surface.

Has the fault been repaired? No



Slide #1 Use Zone Is there a minimum of 72" clearance from any other structures?

Compliant

Slide #1 Deck height from

Notes

Sub grade (gravel) - 76"

Slide #2 (Type & Condition)

Notes

Spiral Tube Slide



Slide #2 Compliance

Compliant

Slide #2 Is the slide exit height between 7"-15" from minimum safety surfacing.

Non-Compliant

Exit height is greater than 15" from safety surface.

Has the fault been repaired? No



Slide #2 Use Zone Is there a minimum of 72" clearance from any other structures?

Compliant

Slide #2 Deck height from

Notes

Sub grade (gravel) - 84"

Slide #3 (Type & Condition)

Notes

Tot Tube Slide



Slide #3 Is the slide exit height between 7"-15" from minimum safety surfacing.

Non-Compliant

Exit height is greater than 15" from safety surface.

Has the fault been repaired? No



Slide #3 Use Zone Is there a minimum of 72" clearance from any other structures?

Compliant

Slide #3 Deck height from

Notes

Sub grade (gravel) - 56"

Slide #4 (Type & Condition)

Notes

Wave Slide (Site Built)



Slide #4 Compliance

Compliant

Slide #4 Is the slide exit height between 7"-15" from minimum safety surfacing.

Compliant

Slide #4 Use Zone Is there a minimum of 72" clearance from any other structures?

Compliant

Slide #4 Deck height from

Notes

Sub grade (gravel) - 70"

Slide #5 (Type & Condition)

Notes

Tot Slide



Slide #5 Compliance

Compliant

Slide #5 Is the slide exit height between 7"-15" from minimum safety surfacing.

Non-Compliant

The transition platform for this slide is less than 48" from the safety surface which necessitates an exit height between 0 - 11". The exit height on this slide is 14".

Has the fault been repaired?

No



Slide #5 Use Zone Is there a minimum of 72" clearance from any other structures?

Compliant

Slide #5 Deck height from

Notes

Sub grade (gravel) - 50"

Slide #6 (Type & Condition)

Notes

Tot "Mini" Slide



Slide #6 Compliance

Compliant

Slide #6 Is the slide exit height between 7"-15" from minimum safety surfacing.

Compliant

Slide #6 Use Zone Is there a minimum of 72"

clearance from any other

structures?

Compliant

Slide #6 Deck height from

Notes

Sub grade (gravel) - 36"

Site Built Slides

Inspected By: Leathers CPSI

Inspected Date: 04/01/2016

Slide #1 (Type & Condition)

Notes

Bumpy Slide (See slide #4 under Manufactured Slides0



Slide #1 Compliance

Slide #1 Is the slide exit height between 7"-15"
from minimum safety surfacing.

Slide #1 Use Zone Is there a minimum of 72"
clearance from any other structures?

Slide #1 Deck height from

No Notes

Slide #2 (Type & Condition)

No Notes

Slide #2 Compliance

Slide #2 Is the slide exit height between 7"-15" from minimum safety surfacing.

Slide #2 Use Zone Is there a minimum of 72" clearance from any other structures?

Slide #2 Deck height from No Notes

Slide #3 (Type & Condition) No Notes

Slide #3 Compliance

Slide #3 Is the slide exit height between 7"-15" from minimum safety surfacing.

Slide #3 Use Zone Is there a minimum of 72" clearance from any other structures?

Slide #3 Deck height from No Notes

Slide #4 (Type & Condition) No Notes

Slide #4 Compliance

Slide #4 Is the slide exit height between 7"-15" from minimum safety surfacing.

Slide #4 Use Zone Is there a minimum of 72" clearance from any other structures?

Slide #4 Deck height from No Notes

Slide #5 (Type & Condition) No Notes

Slide #5 Compliance

Slide #5 Is the slide exit height between 7"-15" from minimum safety surfacing.

Slide #5 Use Zone Is there a minimum of 72" clearance from any other structures?

Slide #5 Deck height from

No Notes

Tot Swings 2-5

Inspected By: Leathers CPSI

Inspected Date: 04/01/2016

360 Bucket

Notes

This piece of equipment needs maintenance. Replace S hooks with clevis hangers.



Are all components accounted for

Compliant

Are support footings stable and buried below the protective surfacing materials

Compliant

Is the swing support structure in good repair, secure with no noted movement

Non-Compliant

Swing support brackets and swing beams show the wear of 18 years of use. We recommend replacing all swing supports and swings with new powder coated steel manufactured apparatus.

Has the fault been repaired? No

Are swing seats in good condition, no cracks,

splits or damage

Are swing fasteners (S-hooks, lock devices, etc.) in good condition and fully closed

Non-Compliant

S hooks in many locations are open beyond compliance.

Has the fault been repaired? No



Are swing support hangers in good condition and fully closed

Non-Compliant

Hangers show the wear of 18 years of use.

Has the fault been repaired? No

Are swing support chains in good condition with no obvious wear or damage noted

Non-Compliant

Swing chins are rusted.

Has the fault been repaired? No

Therapeutic Swings

Notes

This piece of equipment is compliant.



Are all components accounted for

Compliant

Are support footings stable and buried below the protective surfacing materials

Compliant

Is the swing support structure in good repair, secure with no noted movement

Non-Compliant

Swing support brackets and swing connected swing beams show sagging and wear due to 18 year of use. We recommend a full replacement.

Has the fault been repaired? No

Are swing seats in good condition, no cracks, splits or damage

Compliant

Are swing fasteners (S-hooks, lock devices, etc.) in good condition and fully closed

Non-Compliant

S hooks open in many areas. (see above).

Has the fault been repaired? No



Are swing support hangers in good condition and fully closed Non-Compliant

Hangers show signs of 18 years of use.

Has the fault been repaired? No

Are swing support chains in good condition with no obvious wear or damage noted Non-Compliant

Swing chains are rusted.

Has the fault been repaired? No

Swings 5-12

Inspected By: Leathers CPSI

Inspected Date: 04/01/2016

Strap / Belt Swings

Notes

Replace with new manufactured equipment



Are all components accounted for Compliant

Are support footings stable and buried below the protective surfacing materials Compliant

Is the swing support structure in good repair, secure with no noted movement Non-Compliant

Swing beam brackets and beams show wear after 18 years of use.

Has the fault been repaired? No

Are swing seats in good condition, no cracks, splits or damage Compliant

Are swing fasteners (S-hooks, lock devices, etc.) in good condition and fully closed Non-Compliant

S Hooks open in many places.

Has the fault been repaired? No



Are swing support hangers in good condition and fully closed Non-Compliant

Swing hangers show signs of wear after 18 years of use.

Has the fault been repaired? No

Are swing support chains in good condition with no obvious wear or damage noted Non-Compliant

Swing chains are rusted.

Has the fault been repaired? No

Therapeutic Swing Notes

This piece of equipment is compliant.



Are all components accounted for

Compliant

Are support footings stable and buried below the protective surfacing materials

Compliant

Is the swing support structure in good repair, secure with no noted movement

Non-Compliant

Swing beam brackets and swing beams show loosening and wear after 18 year of use.

Has the fault been repaired?

No

Are swing seats in good condition, no cracks, splits or damage

Compliant

Are swing fasteners (S-hooks, lock devices, etc.) in good condition and fully closed

Non-Compliant

S hooks open as described above.

Has the fault been repaired?

No

Are swing support hangers in good condition and fully closed

Non-Compliant

Swing support hangers show signs of 18 years of wear.

Has the fault been repaired?

No

Are swing support chains in good condition with no obvious wear or damage noted

Tire Swing

Notes

Replace with new manufactured equipment



Are all components accounted for	Compliant
<hr/>	
Are support footings stable and buried below the protective surfacing materials	Compliant
<hr/>	
Is the swing support structure in good repair, secure with no noted movement	Non-Compliant
<div>Swing beam brackets and bolts show wear as mentioned above.</div> <div>Has the fault been repaired?No</div>	
<hr/>	
Are swing seats in good condition, no cracks, splits or damage	Compliant
<hr/>	
Are swing fasteners (S-hooks, lock devices, etc.) in good condition and fully closed	Non-Compliant
<div>As mentioned above.</div> <div>Has the fault been repaired?No</div>	
<hr/>	
Are swing support hangers in good condition and fully closed	Non-Compliant
<div>Swing hanger shows signs of wear from use.</div> <div>Has the fault been repaired?No</div>	
<hr/>	
Are swing support chains in good condition with no obvious wear or damage noted	Non-Compliant
<div>Swing chains are rusted.</div> <div>Has the fault been repaired?No</div>	
<hr/>	
Sympathetic Swing	No Notes
<hr/>	
Oodle Swing	No Notes
<hr/>	
Comparison Swing	No Notes

Overhead Equipment

Inspected By: Leathers CPSI

Inspected Date: 04/01/2016

Rings / Ring Bridge

No Notes

Are the grasping devices attached to the beam by chains?

Are the chains less than 7" maximum to the rings?

Is there less than 84" from the center of the grasping device to the top of the sufficient safety surface?

Horizontal Ladder

Notes

Replace with new manufactured equipment



Is the center to center spacing of the rungs greater than 9", but less than 15"?

Yes

Is there less than 74" from the center of the rungs to the top of the sufficient safety surface?

Yes

Hanging Ladder (Trapeze)

No Notes

Is the center to center spacing of the rungs greater than 9", but less than 15"?

Is there less than 74" from the center of the rungs to the top of the sufficient safety surface?

Wavy Ladder

No Notes

Is the center to center spacing of the rungs greater than 9", but less than 15"?

Is there less than 74" from the center of the rungs to the top of the sufficient safety surface?

Parallel Horizontal Ladder

No Notes

Is the center to center spacing of the rungs greater than 9", but less than 15"?

Is there less than 74" from the center of the rungs to the top of the sufficient safety surface?

3 Wheel Spinner

No Notes

Is the center to center spacing of the rungs greater than 9", but less than 15"?

Is there less than 74" from the center of the rungs to the top of the sufficient safety surface?

Chin Up Pipe 1

Notes

Replace with new manufactured equipment



Is there 80" clear from bottom of pipe to top of adequate safety surface?

Yes

Chin Up Pipe 2

No Notes

Is there 80" clear from bottom of pipe to top of adequate safety surface?

Bridges

Inspected By: Leathers CPSI

Inspected Date: 04/01/2016

Rubber Bridge

Notes

Replace with new.



Does the rubber have any cracks or rips? No

Bridge is sagged and needs to be replaced.

Has the fault been repaired? No

Is the handrail wood? Yes

Tot Rubber Bridge No Notes

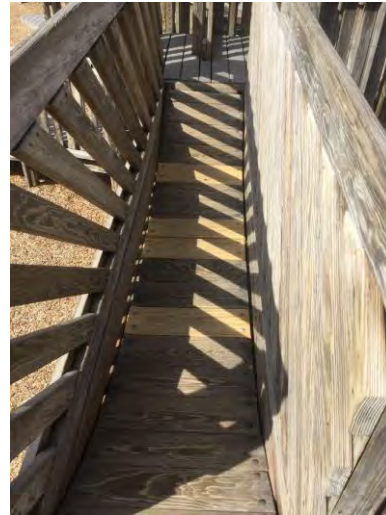
Does the rubber have any cracks or rips? NA

Is the handrail wood? NA

Challenge Bridge No Notes

Suspension Bridge Notes

This piece of equipment is non-compliant. This piece of equipment needs maintenance and should no longer used.
We recommend replacing with newer play element.



are the gaps in the treads less than 1/2" on any side?

No

Several non-compliant gaps.

Has the fault been repaired?

No

Is the safety bridge in place and in good condition?

Yes

Is the spacing on the balusters less than 3 1/2"?

Yes

Arched Bridge

No Notes

Are the spaces between the decking less than 1/2"

Are there any exposed screws or nails?

Is the spacing on the balusters less than 3 1/2"?

Wavy Bridge

Notes

This is a unique bridge and will be replaced with a newly designed component.



**Are the spaces between the decking less than
1/2"**

Yes

Are there any exposed screws or nails? Yes

Is the spacing on the balusters less than 3 1/2"? Yes

Wobbler No Notes

Are the spaces between the decking less than 1/2"

Are there any exposed screws or nails?

Is the spacing on the balusters less than 3 1/2"?

Chain & Hose

Inspected By: Leathers CPSI

Inspected Date: 04/01/2016

Chain Bridge

Notes

Replace with new cable version.



Chain Cradle Bridge

Notes

Replace with new cable version.

Chain Cradle Climber

Notes

Replace with new cable version.



Chain Ladder

Notes

Replace with new cable version. There are 2 of these. The smaller one is labeled "chain cargo net" (near the sand digger) was built as a chain ladder rather than a cargo net.



Chain Soft Climber

No Notes

Chain Spider Web

Notes

Replace with new cable version.



Chain Walk

No Notes

Chain Climbing Wall Parallel

Notes

Replace with new cable version.



Is the opening 15" maximum?

No

Opening is greater than 15"

Has the fault been repaired? No

Chain Climbing Wall Diagonal

No Notes

Is the opening 15" maximum?

NA

Chain Cargo Net

No Notes

Fulcrum Balance Beam

No Notes

Ladders

Inspected By: Leathers CPSI

Inspected Date: 04/01/2016

Step Ladder #1

No Notes

Is the entrance area from the deck less than 15"?

What is the deck to deck or rough grade to deck measurement?

Step Ladder #2

No Notes

Is the entrance area from the deck less than 15"?

What is the deck to deck or rough grade to deck measurement?

Vertical Ladder #1

No Notes

Is the entrance area from the deck less than 15"?

What is the deck to deck or rough grade to deck measurement?

Vertical Ladder #2

No Notes

Is the entrance area from the deck less than 15"?

What is the deck to deck or rough grade to deck measurement?

Vertical Ladder #3

No Notes

Is the entrance area from the deck less than 15"?

What is the deck to deck or rough grade to deck measurement?

Climbers

Inspected By: Leathers CPSI

Inspected Date: 04/01/2016

Climbinator

No Notes

Deep Rung Arch

No Notes

Clover Climber

No Notes

Clover climber distance from deck to deck or rough grade.

Coil Climber

No Notes

Coil climber distance from deck to deck or rough grade

Arched Climber

No Notes

Arched climber distance from deck to deck or rough grade.

Hanging Pods

No Notes

Is the rubber worn, cracked, or split?

Is the opening at the entrance less than 15"

Rock Wall

No Notes

Are all grips accounted for?

Are all bolts capped, with no protrusions on the opposite side of the grips?

Miscellaneous Equipment

Inspected By: Leathers CPSI

Inspected Date: 04/01/2016

Is the deck to center of bars measurement 30"?

NA

Is the space between center of bars 18"

No

Greater than 18"

Has the fault been repaired?

No

Fire Pole #1

Notes

Replace with new



Is the diameter of the fire pole #1 no greater than 1.9"

Yes

Is the distance between the fire pole #1 and deck between 18" to 20"

Yes

Is the access area to the fire pole #1 less than 15" wide?

Yes

Fire Pole #2

No Notes

Is the diameter of the fire pole #2 no greater than 1.9"

Is the distance between the fire pole #2 and deck between 18" to 20"

Is the access area to the fire pole #2 less than 15" wide?

Steering Wheel(s)

Notes

Replace with new. There are currently 4 steering wheels



Is there a minimum of 32" access?

No

Less than 32" clear.

Has the fault been repaired? No

Is there a minimum of 17" clear under the steering wheel to the wall it is mounted on?

No

Less than 17"

Has the fault been repaired? No

Is there 24" clear from safety surface to bottom of steering wheel? Yes

Tunnels

Inspected By: Leathers CPSI

Inspected Date: 04/01/2016

Crawl Tunnel #1

Notes

This piece of equipment is compliant. Reuse in new design.



Crawl Tunnel #1 length

108

Crawl Tunnel #2

Notes

This piece of equipment is compliant. Reuse in new design.



Crawl Tunnel #2 length

48

Incline Tunnel #1

No Notes

Incline Tunnel #1 length

Incline Tunnel #2

No Notes

Incline Tunnel #2 length

90 Degree Crawl Tunnel

No Notes

Wavy Tunnel #1

No Notes

Wavy Tunnel #1 length

Wavy Tunnel #2

No Notes

Wavy Tunnel #2 length

Balance

Inspected By: Leathers CPSI

Inspected Date: 04/01/2016

Wobble Board

No Notes

Are anchors visible?

Are all fasteners accounted for and secure?

Arched Balance Beam

No Notes

Balance Beam

Notes

Replace with new.



Is this for ages 2-5?

No

Is this 2-5 yr olds balance beam less than 12" from safety surface?

NA

Is this for ages 5-12?

Yes

Is this 5-12 yr olds balance beam less than 16" from safety surface?

Yes

Graduated Balance Beam

No Notes

Is this for ages 2-5?

Is this 2-5 yr olds graduated balance beam less than 12" from safety surface?

Is this for ages 5-12?

Is this 5-12 yr olds graduated balance beam less than 16" from safety surface?

Log Roll

No Notes

Is the highest point of the rolling log less than 18" at the highest point above the safety surface?

Is there at least 72" between equipment when adjacent designated play surfaces are no more than 30" high?

Is there at least 108" between equipment when adjacent designated play surfaces are more than 30" high?

Accessible Components

Inspected By: Leathers CPSI

Inspected Date: 04/01/2016

Ability Whirl

No Notes

Accessible Parallel Bars

Notes

Replace with new manufactured equipment.



Is there 28" clear between left and right bars?

Yes

Are the bars 30" up from the safety surfacing?

Yes

Accessible Suspension Bridge

No Notes

Is there at least 40" clear along bridge?

Are all of the treads accounted for and in good condition?

Are there any gaps greater than 1/2" on the treads?

A.D.A. Sand Digger No Notes

Accessible Sand Table No Notes

Is there 24" minimum clearance under the table?

Is the maximum height of the table at the accessible point less than 30"?

Low Ladder Notes

There are 2 low ladders. Replace both with new manufactured equipment.



Is there 51 1/2" from safety surface to center of ladder rung? Yes

Actual distance from center of rung to safety surface.

Low Rings Notes

There are 2 sets of low rings. Replace both with new manufactured equipment. Replace with new manufactured equipment



Is there 51 1/2" from safety surface to center of grasping device? Yes

Actual distance from center of grasping device to safety surface.

Rocking Platform No Notes

Are all gaps less than 1/2"?

Swinging Platform No Notes

Are all gaps less than 1/2"?

We-Saw No Notes

Wheelchair Access Ramp Notes

Rebuild with new recycled plastic.



Zip Krooz (Accessible)

No Notes

Sand Equipment

Inspected By: Leathers CPSI

Inspected Date: 04/01/2016

Sand Digger

Notes

Reuse in new design if desired.



Sand Table

No Notes

Sand Box

Notes

Recommend removing.



Tire Elements

Inspected By: Leathers CPSI

Inspected Date: 04/01/2016

Vertical Tire Tunnel

Notes

Recommend replacing with newer version Black Hole Net.



Bronco

No Notes

Tire Bridge

No Notes

Tire Ladder

No Notes

Tire Cubes

No Notes

Tire Trench

No Notes

Bouncer

Notes

Recommend removing.



Cones

Inspected By: Leathers CPSI

Inspected Date: 04/01/2016

Cones

Notes

Rebuild with newer low maintenance materials.



Activity Panels & Music

Inspected By: Leathers CPSI

Inspected Date: 04/01/2016

Activity Panel #1

Notes

Tic Tac Toe - Replace with new recycled plastic materials.



Activity Panel #2

Notes

Sound Wall - Replace with new recycled plastic materials.



Activity Panel #3

No Notes

Activity Panel #4

No Notes

Activity Panel #5

No Notes

Seating

Inspected By: Leathers CPSI

Inspected Date: 04/01/2016

Benches

Notes

Replace with new. All benches are in very poor condition.



Covered Seating

Notes

Replace with new.



Picnic Table

Notes

Replace with new.



Sandbox with Benches

No Notes

Comments

Inspected By: Leathers CPSI

Inspected Date: 04/01/2016

Comments: It is very evident that Exeter, New Hampshire's Planet Playground has been a focal point in the community for children to engage in creative play for nearly 2 decades.

In addition, the park department personnel can be commended for doing a great job in maintaining the park and making it safe for children to play on. But, as with any facility that gets the kind of use and enjoyment that Planet Playground has obviously experience in the past 18 years, a time comes when "band-aid" type repairs and maintenance are insufficient to keep this facility current to 21st century standards. By using recycled plastic materials, and addressing accessibility issues, a more "open" concept, and significantly less maintenance costs, Planet Playground II could remain a safe and family-focused facility for decades to come. Without doing a comprehensive replacement, safety issues will undoubtedly become more prevalent in the not too distant future.

As a result of this assessment done on March 30-32, 2016 ... along with consultation with Leathers and Associates design team members, it is our recommendation that the community of Exeter move forward with plans to replace Planet Playground with an updated "Planet Playground II."

Summary

Exeter, NH Proposed Scope of Work

RECOMMENDATIONS:

Most of the structure is in meduim condition with some parts of the structure and equipment in need of repair. Some areas can be repaired back to their original condition but in many cases there are newer options that offer more maintenance friendly materials. When re-building or replacing, recycled plastic and low maintenance materials will be utilized as much as possible.

PROPOSED SCOPE OF WORK:

- **Main support posts:**
 - Power wash, sand, fill cracks and stain/seal the posts with solid body stain and seal with EPL coating.
 - **Framing:**
 - Stain/seal exposed surfaces with solid body stain. Lower, smaller level 3 decks that are close to ground contact should be reframed with structural plastic and re-decked with composite or PVC decking. Approximately 10-15% of remaining decks may need to be reframed and re-decked because of damage or changes in the new design.
 - **Decking:**
 - Option 1 would be to leave as is, but do a thorough power wash and cleaning. Much of the decking is discolored and has mold and lichen. Other options should be explored for a solid body stain that could be used on composite decking.
 - **Handrails:**
 - Replace with composite or recycled plastic.
 - **Handrail Posts:**
 - Replace with recycled structural plastic.
 - **Balusters:**
 - Replace with recycled plastic and pipe balusters.
-

- **Mazes cubes:**
 - In most cases the maze cubes can be left as is. In some areas where new and upgraded designs are created, new maze cubes should be larger maze cubes and re-decked with composite decking.
 - **Accessible ramps:**
 - Leave “as-is”
 - **Fence:**
 - Replace with new all plastic fence. The entire playground has a chain link fence around it, including the pavilion and "world map" area. Gates provide accessibility. Some of the fence with pickets is inside (immediately adjacent) to the chain link fence. Overall the fence and perimeter are unattractive. A new fence with some color, named pickets and possibly some areas with hand tiles would greatly increase the overall "curb appeal" of the play area.
 - **Low perimeter:**
 - Replace loose or missing pieces and cap with plastic.
 - **Safety Surfacing:**
 - Add additional engineered wood fiber to a total depth of 12" throughout.
 - Make sure the finished safety surfacing meets all safety requirements.
 - **Slides:**
 - Replace with new manufactured equipment, Tot Slide, Tunnel Slide, Bumpy Slide.
 - **Swings**
 - Replace all swings with new lower maintenance manufactured swings, including all new chains and seats
 - **Hose and chain climbing equipment**
 - Replace all hose and chain equipment with new cable equipment.
 - **Large and Small Rubber Bridges**
 - Rebuild with structural plastic lumber as originally designed.
 - **Ring Bridge & Ring on Chains**
 - Replace equipment with lower maintenance manufactured overhead equipment.
 - **Horizontal Ladder**
 - Replace equipment with lower maintenance manufactured overhead equipment.
 - **Chin Up Pipes**
 - Replace with new manufactured equipment.
 - **Vertical Tire Tunnel**
 - Replace with Black Hole Net
 - **Balance Beams & Balance on Chains**
 - Replace with new.
 - **Track Ride (Trolley)**
 - Replace with more modern age-appropriate equipment with greater play value. Exact equipment to be determined based on the needs of the community.
 - **Suspension Bridge & Low Suspension Bridge**
 - Replace both with new framing & decking.
 - **Low Rings & Low Ladder (TOT) & Accessible Parallel Bars**
 - Replace equipment with lower maintenance manufactured overhead equipment.
 - **TOT Tire Swing (Bronco)**
 - Replace with age appropriate apparatus
 - **Chain & Hose (Soft Climber, Climbing Wall, Chain Cargo Net, Wiggly Bridge**
 - Replace with newer lower maintenance cable versions.
-

- **Fire Pole**
 - Replace Pole & rebuild access area.
- **Play Panels**
 - Replace Alphabet Blocks
 - Replace Tic Tac Toe
 - Replace Sound Wall
 - Replace Phones
- **Seating**
 - Replace Benches
 - Replace Picnic Table

CONSTRUCTION OPTIONS:

The majority of our projects are constructed through community volunteers. This process is L&A's heart and soul. The community built method not only saves money but empowers communities with limitless potential and benefits. At the same time we understand that the community built model is not always an option or the best choice. In those situations we also can work with contractors, city workers, volunteers and a variety of combinations. In many cases L&A can also be the contractor for the project. Our goal is to find the right solution for your community and situations.

CONCLUSION:

The playground has been well cared for over the years. There are many maintenance and safety compliance issues. Following the recommendations above will help reduce overall maintenance needs, bring the playground back into safety compliance and ensure the structure last as it was intended to. The finished work will comply with the current version of ASTM F1487 and CPSC Pub.325.

ASSOCIATED COST: **For renovation**

An estimate for the proposed scope of work above including L&A (design, project management and construction consultation) and all materials is estimated at around **\$200,000-230,000**. This cost estimate is based on utilizing our community built model.

It's anticipated that the work can be completed in five days. This does not include any demolition of the playground that is needed prior to the renovation.

As a reminder this is just an estimate until we define the final scope of work and get actual quotes for the materials.

ASSOCIATED COST: **For replacement**

Due to the structures age and condition we have provided an estimated the cost to replace the playground with a new design utilizing all of today's latest materials (no wood). Today's playgrounds are expected to last minimally 30 years with minimal maintenance needs. A custom designed community built replacement estimate is around **\$280,000-320,000**. This cost estimate is based on utilizing our community built model.

It's anticipated that the work can be completed in five to six days.

As a reminder this is just an estimate until we define the final scope of work and get actual quotes for the materials.

While a renovation is an option consideration should be given to the total renovation amount vs. a new custom playground. Consideration should be given to the long term pros and cons of each option. Also yearly maintenance cost and needs

The above estimates are utilizing engineered wood fiber for the safety surfacing, during the site visit it was voiced that there may be interest in having "poured in place" in the future. The estimated coast for this would be around **\$130,000-150,000**

NEXT STEPS:

- Work with L&A to develop a final scope of work based on your budget and our recommendations
- Review when you would want the work completed by and develop a timeline from there

Please contact Dave Johnson (davej@leathersassociates.com or Aaron Chandler aaron@leathersassociates.com) with any questions you may have. We truly appreciate the opportunity to work with your community again.

Sincerely,

Marc Leathers
President

For liability reasons, any changes made to the playground must be approved by or completed under the direction of Leathers & Associates staff.
