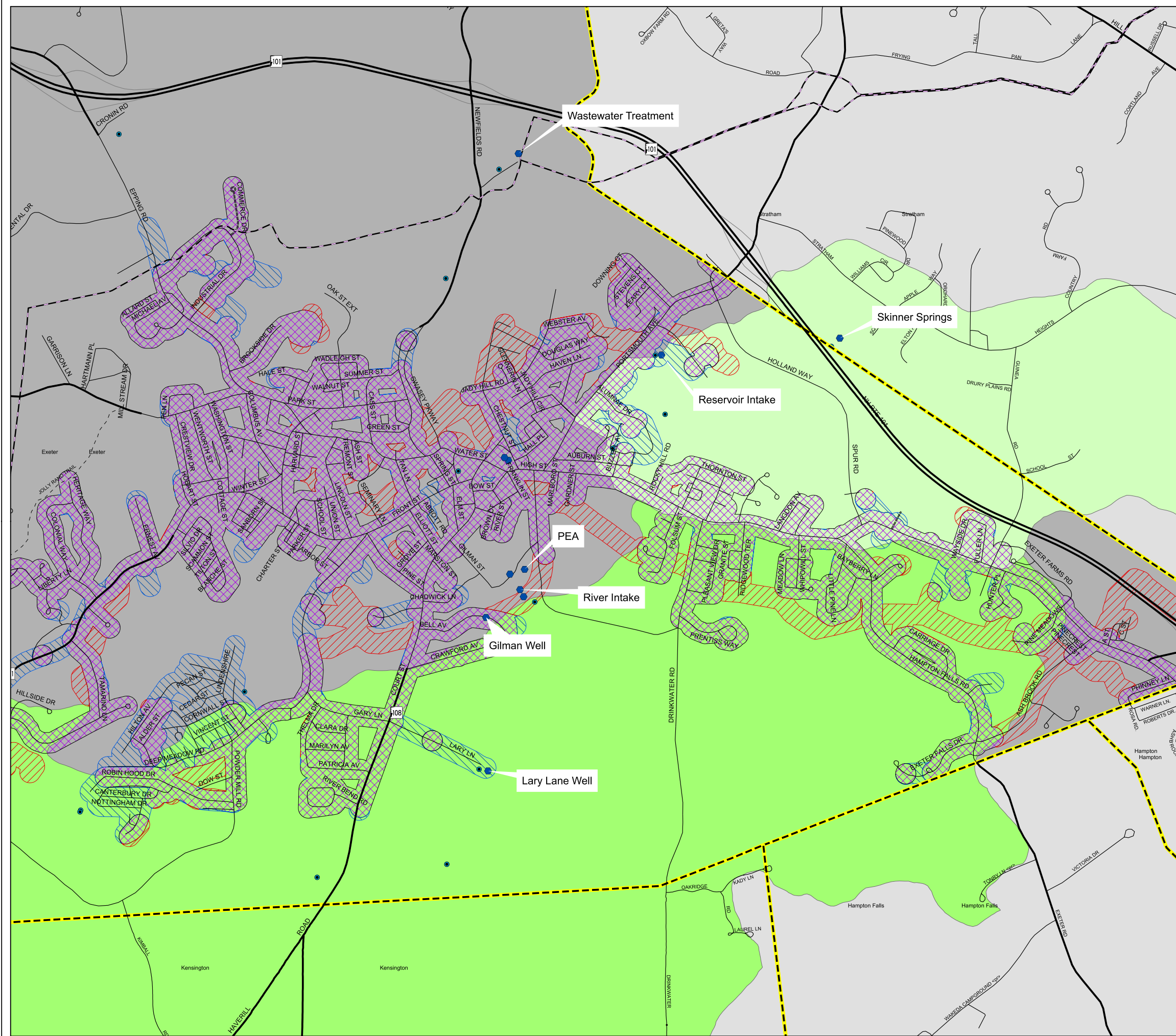


# Map UP-1 Public Utilities & Facilities Exeter, New Hampshire

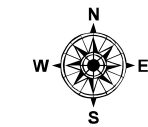
January 6, 2003



## Legend

### Water & Sewer Service Areas

- Sewer & Water Service
- Sewer Service
- Water Service
- Impoundments, Withdrawals & Discharges
- Public Supply Wells (active)
- Pipelines
- Municipal Boundaries
- Shoreline; Stream
- Apparent Wetland Limit
- Intermittent Stream
- Other Surface Water Feature
- Surface Water
- water lines
- sewer lines
- Dearborn Brook Source Water Protection Area
- Exeter River - Source Water Protection Area
- Squamscott River Watershed

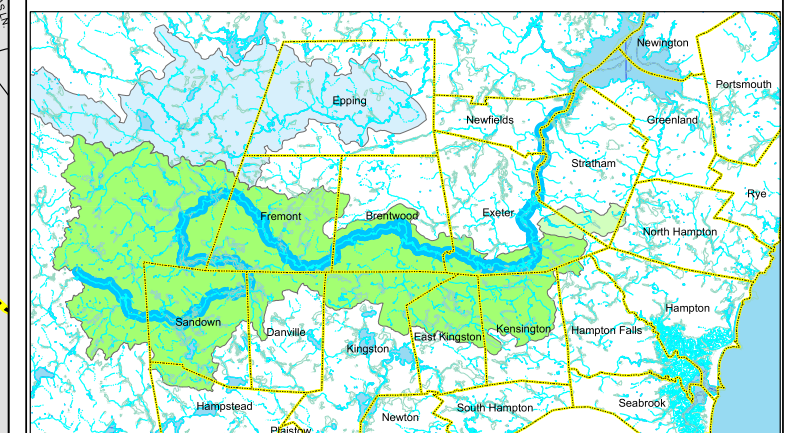


**Water and Sewer Service Areas** were provided by the NH Department of Environmental Services. These areas are approximate and were derived from buffering road centerline features by a constant distance for streets having water, sewer or both services available.

**Dearborn Brook and Exeter River Source Water Protection Areas** were extracted from a NHDES coverage of Drinking Water Protection Areas. Drinking Water Source Protection Areas have been delineated by the NH Department of Environmental Services as part of the State's drinking water protection program under the Groundwater Protection Act, RSA 485-C. The coverage is limited to sources for community and non-community, non-transient public water systems. Under the State's program, a protection area is the area from which water is likely to flow toward and reach a water supply source.

**Squamscott River Watershed** was extracted from a NHDES coverage of Watersheds. Watersheds were delineated and automated by the New Hampshire Department of Environmental Services, Water Resources Division. Source maps for this data layer are USGS 1:24,000 Topographic Quadrangle maps and USDA Natural Resources Conservation Service 1:250,000 watershed maps.

**Base Features** (transportation, political and hydrographic) were automated from the USGS Digital Line Graph data, 1:24,000, as archived in the GRANIT database at Complex Systems Research Center, Institute for the Study of Earth, Oceans and Space, University of New Hampshire, Durham, NH; 1992-1999. The roads within the Rockingham Planning Region have been updated by Rockingham Planning Commission and by NH Department of Transportation through ongoing efforts.



Exeter Town Water Source Protection Areas: Exeter River & Dearborn Brook  
Exeter River are highlighted on map. Also shown is the Squamscott River Watershed, within which is the Exeter Wastewater Treatment Plant.

