

Map PR-1 Town Owned Land Exeter, New Hampshire

December 2010

ID TOWN RECREATION FACILITIES

- 1 Recreation Park/Planet Playground
- 2 Brick Yard Ball Fields
- 3 Kid's Park
- 4 *Gilman Park
- 5 +Henderson Swasey Town Forest
- 6 +Oakland Town Forest
- 7 Littlefield Skate Board Park
- 8 Stewart Park Boat Launch
- 9 Winter Street Common
- 42 Senior Citizen's Center

ID SCHOOL RECREATION FACILITIES

- 10 Lincoln/Main Street School Playing Field, Playgrounds, & Gymnasiums
- 11 Exeter Area HS Athletic Fields & Gymnasiums
- 12 #Phillips Exeter Academy Ice Arena, Athletic Fields and Pool

ID PRIVATE RECREATIONAL FACILITIES

- 13 Senior Fitness Center
- 14 Exeter Bowling Lanes
- 15 Exeter Country Club & Trail
- 16 Gymrobics
- 17 Orsam Sylvania
- 18 The Rinks at Exeter (Ice Skate)
- 52 Nautilus of Exeter

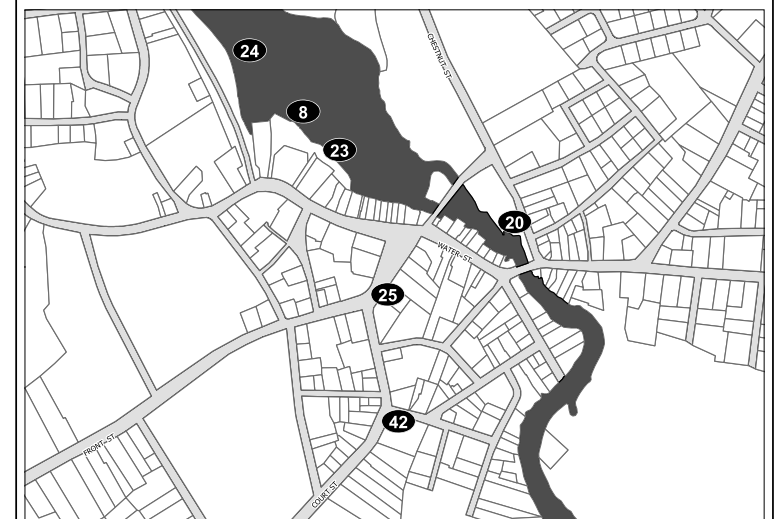
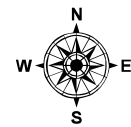
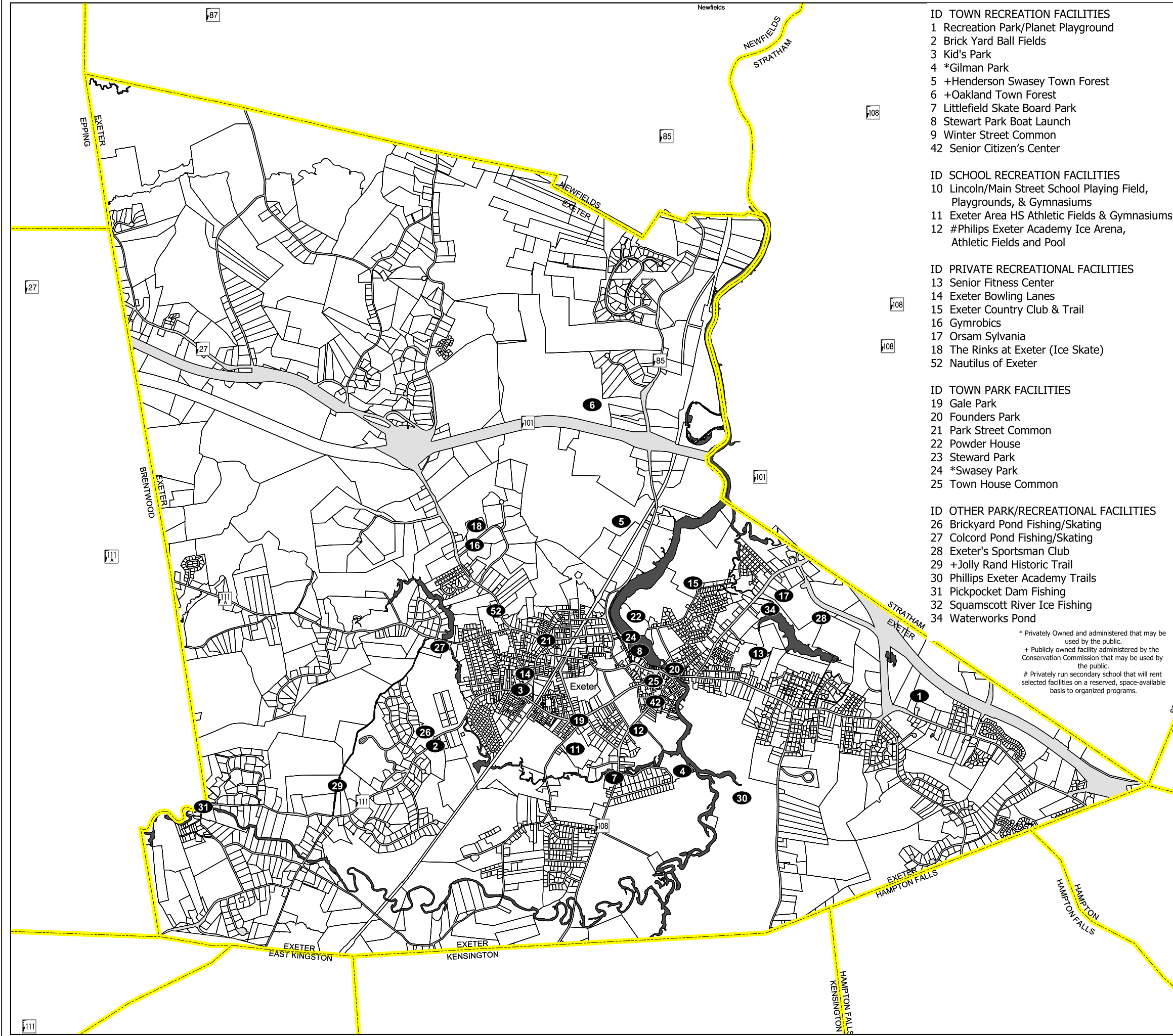
ID TOWN PARK FACILITIES

- 19 Gale Park
- 20 Founders Park
- 21 Park Street Common
- 22 Powder House
- 23 Steward Park
- 24 *Swasey Park
- 25 Town House Common

ID OTHER PARK/RECREATIONAL FACILITIES

- 26 Brickyard Pond Fishing/Skating
- 27 Colcord Pond Fishing/Skating
- 28 Exeter's Sportsman Club
- 29 +Jolly Rand Historic Trail
- 30 Phillips Exeter Academy Trails
- 31 Pickpocket Dam Fishing
- 32 Squamscott River Ice Fishing
- 34 Waterworks Pond

* Privately Owned and administered that may be used by the public.
 + Publicly owned facility administered by the Conservation Commission that may be used by the public.
 # Privately run secondary school that will rent selected facilities on a reserved, space-available basis to organized programs.

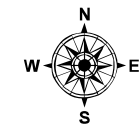


Base Features (transportation, political and hydrographic) were automated from the USGS Digital Line Graph data, 1:24,000, as archived in GRANIT database at Complex Systems Research Center, Institute for the study of Earth, Oceans, Space, University of New Hampshire, Durham, NH 1992-1999. The roads within the Rockingham Planning Region have been updated by Rockingham Planning Commission and by NH Department of Transportation through ongoing efforts.

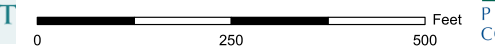
**Map PR-2
Simpson Recreation Area
Exeter, New Hampshire**

December 2010

**Proposed
Simpson Recreation Area**
(Land Donated to the Town by Pat Patroski)



Base Features (transportation, political and hydrographic) were automated from the USGS Digital Line Graph data, 1:24,000, as archived in GRANIT database at Complex Systems Research Center, Institute for the study of Earth, Oceans, Space, University of New Hampshire, Durham, NH 1992-1999. The roads within the Rockingham Planning Region have been updated by Rockingham Planning Commission and by NH Department of Transportation through ongoing efforts.



Map PR-3 Conservation Lands & Trail Networks Exeter Masterplan

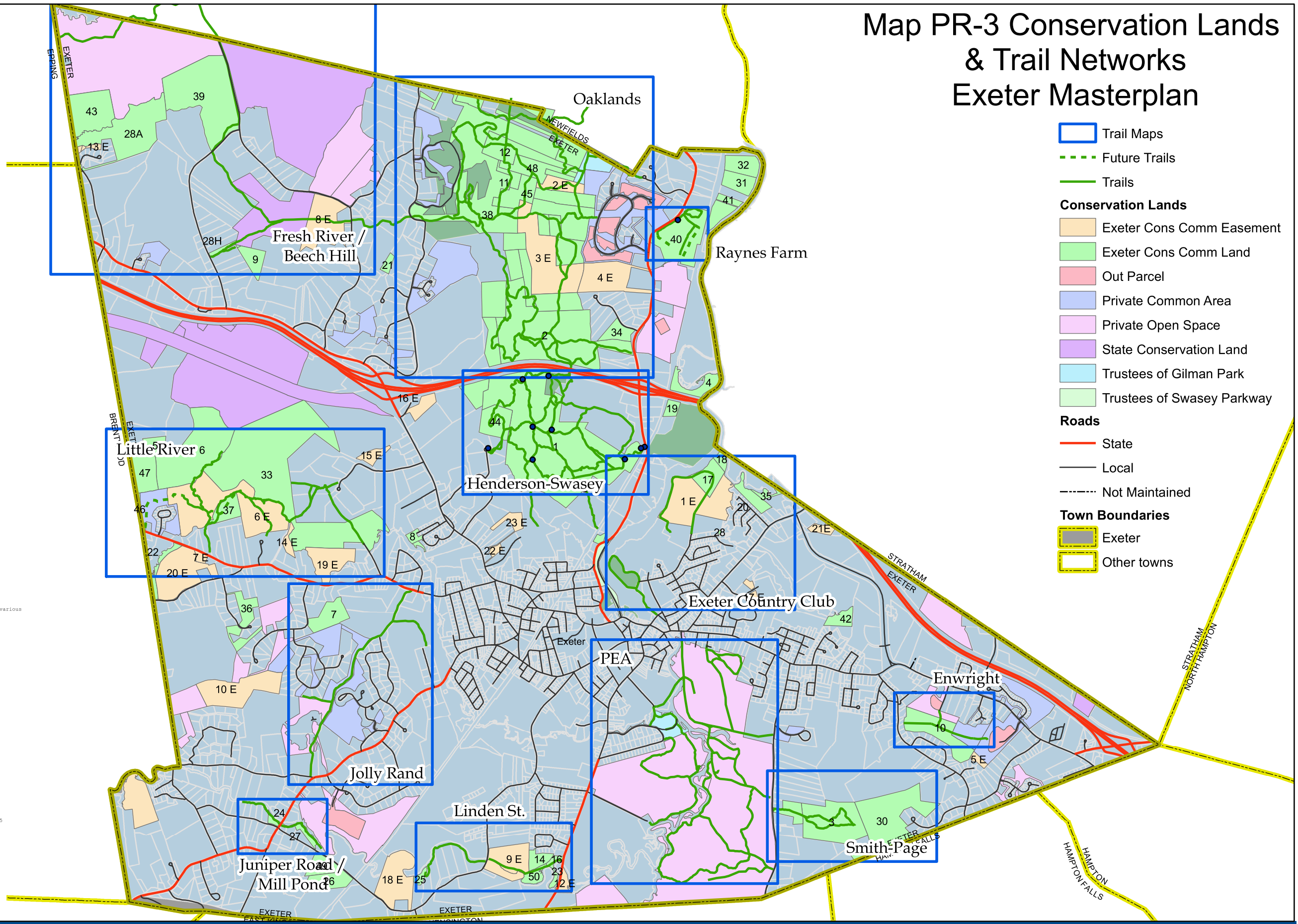
LANDS AND EASEMENTS ADMINISTERED BY THE EXETER CONSERVATION COMMISSION

Map #	Lands	Acres	Year Acquired	Tax Map-Lot
1.	Henderson-Swasey Town Forest			
	Henderson Swasey Land	178.0	1973	49-8
	Mary Williams Land	7.0		
	Arthur Plouffe Land	13.0		
	Total	221.0		
2.	The Oaklands Town Forest			
	Deene Land	141.5	1991	35-2
	Chamberlin Land	4.0	1991	
20-3	Stockbridge Land	5.0	1991	
	Jensen Land	37.5	1991	
	Phillips Exeter Academy Land	16.8		35-2
	Dawson/Dagostino Land	27.0	1984	25-1
	Total	231.8		
3.	Smith Page Conservation Land			
	Smith Cove (Drinkwater Road)	46.8	1979	107-3
	Total	8.5	1978	93-11
4.	Molloy Land (Great Roundabout)	11.7	1976	38-9
5.	P.E.A. Land (Brentwood Road)	8.0	1981	44-5
6.	Houck/Kazanjan Land (Brentwood Road)	74.3	1987	44-1
7.	Cheney Land (Greenleaf Drive)	16.5	1983	
75-21	Colcord Pond (several parcels)	3.8	1984	55-16, 55-36
9.	Tomilson/Kenick Land (Old Town Farm Road)	10.3	1978	28-15
10.	Enwright Land (Hampton Falls Rd.)	30.4	1986	86-12
11.	Neal Land (part of Dawson Land)	3.4	1984	20-6
12.	Pease Land (part of Dawson Land)	4.0	1984	10-8
13.	Deene Land (Watson Road)	21.0	1991	10-8
14.	Tara Development Company & Riverbend Cr.	6.7	1986	104-23
15.	Tomilson & Kenick Land (Old Town Farm Road)	2.5	1998	28-13, 28-14
16.	Perry Land	4.0	1993	104-4
17.	Irvine Conservation Area (Powell's Point)	13.4	1989	50-1
18.	Irvine-Hayes Marsh	3.3	1989	50-2
19.	Wilfred Moreau Nursery	4.6	1967	38-13
20.	Allen Street Woodlan	9.0	1990	52-97
21.	Richard Parker Land	3.0		26-8
22.	Dudley Land (Brentwood Road)	7.0		58-6, 58-1
23.	Perry Land Ext.	0.2	2001	111-7
24.	Juniper Ridge	2.0	1991	101-49
25.	Shaw Land	3.0	1979	112-11
26.	Leighton Land	16.0	1995	102-5
27.	CI			
28.	Prospect Park Marsh	0.2	1995	52-8
29.	Chapin Woods	43.2	1998	15-3
30.	Kata Land - Exeter Falls Estates II	67.3	1998	91-35, 1
31.	Renewable Resources Land (Squamscott)	11.8	1995	22-8
32.	Lee/Diller Land (Squamscott River)	13.2	1995	22-6
33.	R.E.D.C. Land	212.0	1999	56-2
34.	Carlisle Land (Walters Way)	9.6	1999	35-3
35.	Starry Brook Land	3.5	1998	52-97
36.	Christina Estates	17.1	2002	60-10, 76-18
37.	FOS Land	12.0	1999	57-4
38.	Oaklands (Forest Ridge) LLC	151.5	2005	19-16
39.	Morgan Ryan Land Realty (proposed)	88.0	2000	13-2
40.	Raynes Land (Wiggins Farm)	48.6		
2002	24-30, 23-1, 2			
41.	Thomas Land	3.7	2002	22-14
42.	Windemere Land	8.6	2000	70-21
43.	Birch Road Trust	45.0	2002	15-5
44.	Tax-Deeded Parcels (adj. to HSTF)	28.6	2001	40-13, 39-2, 3
45.	Tax-Deeded Parcels (adj. to OTF)	71.6	2001	10-various, 20-various
46.	Tax-Deeded Land (Brentwood Road/ Town Lin	1.5	2001	58-8
e)	Tax-Deeded Land (Brentwood/Exeter Line)	19.1	2002	44-2, 3
48.	Connor Land	19.0	2004	20-5
49.	Stone Land	10.7	2005	102-6
50.	White Land	5.8	2005	104-3

TOTAL LANDS ADMINISTERED BY THE CONSERVATION COMMISSION: 1661.8 ACRES

Year	Map #	Lands	Acres	Acquired
1989	1 E.	Exeter Country Club	55.4	52-1
1991	2 E.	Captain's Meadow	26.2	24-3, 21-1
1991	3 E.	Chamberlin Easement	61.5	24-1
2002	4 E.	Chamberlin Easement	30.0	24-30
1995	5 E.	Pine Meadows Condominium (Amberwood)	2.5	87-18
1996	6 E.	Dollof Land	82.7	57-3
1998	7 E.	Dollof Land	2.3	60-21
1995	8 E.	Bunker Property (Beech Hill Road)	36.7	18-3
1998	9 E.	McDonnell Property	18.0	104-77
1995	10 E.	Joseph & Nellie Swasey Land	40.0	79-10
1994	11 E.	Vaughan-Cusick Land (Newfields Road)	1.7	53-2
1998	12 E.	Waleryack Land	4.0	111-1
2000	13 E.	Chapman Woods	2.2	61-25, 1, 60-25
2001	14 E.	Atwood Property	3.3	47-4, 4, 1
2000	15 E.	Edmunds Easement	6.2	7-9
2000	16 E.	Mobil Land (Epping Road)	7.9	40-11
2001	17 E.	Exeter Hospital Land	3.2	68-129
2004	18 E.	Hanson Easement	34.3	112-9, 113-2
2005	19 E.	Amundsen Easement	22.2	61-27
2005	20 E.	Field Easement	41.8	60-16
2005	21 E.	Route 88 Connector LLC	5.8	51-13
2008	22 E.	Felder Kuehl Properties	2.1	55-75
2008	23 E.	Felder Kuehl Properties	6.7	55-75.1

TOTAL EASEMENTS ADMINISTERED BY THE CONSERVATION COMMISSION: 496.8 ACRES



Trail Maps
 Trail Maps

Future Trails
 Future Trails

Trails
 Trails

Conservation Lands

- Exeter Cons Comm Easement
- Exeter Cons Comm Land
- Out Parcel
- Private Common Area
- Private Open Space
- State Conservation Land
- Trustees of Gilman Park
- Trustees of Swasey Parkway

Roads

- State
- Local
- Not Maintained

Town Boundaries

- Exeter
- Other towns

Trail Network
Town of Exeter, NH



Exeter Trail Network Overview

