

SITE SPECIFIC SOIL MAPPING STANDARDS:

THIS MAP PRODUCT IS WITHIN THE TECHNICAL STANDARDS OF THE NATIONAL COOPERATIVE SOIL SURVEY. IT IS A SPECIAL PURPOSE PRODUCT, INTENDED FOR INFILTRATION REQUIREMENTS BY THE NH DES ALTERATION OF TERRAIN BUREAU. IT WAS PRODUCED BY A PROFESSIONAL SOIL SCIENTIST, AND IS NOT A PRODUCT OF THE USDA NATURAL RESOURCES CONSERVATION SERVICE. THERE IS A REPORT THAT ACCOMPANIES THIS MAP.

THE SITE SPECIFIC SOIL SURVEY AND WETLAND DELINEATION WAS PRODUCED APRIL 29, 2021, AND WAS PREPARED BY JAMES P. GOVE, CSS # 004, GOVE ENVIRONMENTAL SERVICES, INC. THE LOCATION OF THE SOIL SURVEY IS AT CHARTER STREET, EXETER, NH.

SOILS WERE IDENTIFIED WITH THE NEW HAMPSHIRE STATE-WIDE NUMERICAL SOILS LEGEND, USDA NRCS, DURHAM, NH, ISSUE # 10, JANUARY 2011.

HIGH INTENSITY SOIL SURVEY (HISS) CONVERSION IS DETERMINED BY THE SOIL PROPERTIES IDENTIFIED IN "HIGH INTENSITY SOIL MAPPING STANDARD FOR NH", SSSNIE SPECIAL PUBLICATION NUMBER 1, DECEMBER, 2017.

HYDROLOGIC SOIL GROUPS ARE DETERMINED FROM SSSNIE SPECIAL PUBLICATION NUMBER 5, "K SAT VALUES FOR NEW HAMPSHIRE SOILS", SEPTEMBER, 2009.

SOIL MAP SYMBOL	SOIL MAP UNIT NAME	HISS CONVERSION	HSG
38	ELDRIDGE SANDY LOAM	343	C
100	UDORTMENTS, WET SUBSTRATUM	463	D
496	NATCHAUG MUCK	683	D
699	URBAN LAND	N/A	IMP
899	URBAN LAND-WINDSOR COMPLEX	161	A

B SLOPE = 0-8% C SLOPE = 8-15% E SLOPE = >25%

DRAINAGE NOTES:

- ALL DRAINAGE STRUCTURE AND SWALES WILL BE BUILT AND STABILIZED PRIOR TO HAVING RUN-OFF DIRECTED TO THEM.
- SEE DETAIL SHEETS FOR STANDARD CONSTRUCTION NOTES AND DETAILS.

KEY TO SOIL TYPES

HIGH INTENSITY SOIL SURVEYS UTILIZE A FIVE-PART CLASSIFICATION TO IDENTIFY SOIL TYPES. SYMBOLS A-E READ FROM LEFT TO RIGHT IN THE CLASSIFICATION.

SYMBOL A : DRAINAGE CLASS

- 1- EXCESSIVELY DRAINED
- 2- WELL DRAINED
- 3- MODERATELY WELL DRAINED
- 4- SOMEWHAT POORLY DRAINED
- 5- POORLY DRAINED
- 6- VERY POORLY DRAINED

SYMBOL B: PARENT MATERIAL

- 1- GLACIOFLUVIAL DEPOSITS (OUTWASH/TERRACES)
- 2- GLACIAL TILL
- 3- VERY FINE SAND AND SILT DEPOSITS
- 4- LOAMY/SANDY OVER SILT/CLAY DEPOSITS
- 5- SILT AND CLAY DEPOSITS
- 6- EXCAVATED, REGRADED, OR FILLED
- 7- ALLUVIAL DEPOSITS
- 8- ORGANIC MATERIALS - FRESHWATER
- 9- ORGANIC MATERIALS - TIDAL MARSH

SYMBOL C: RESTRICTIVE FEATURES

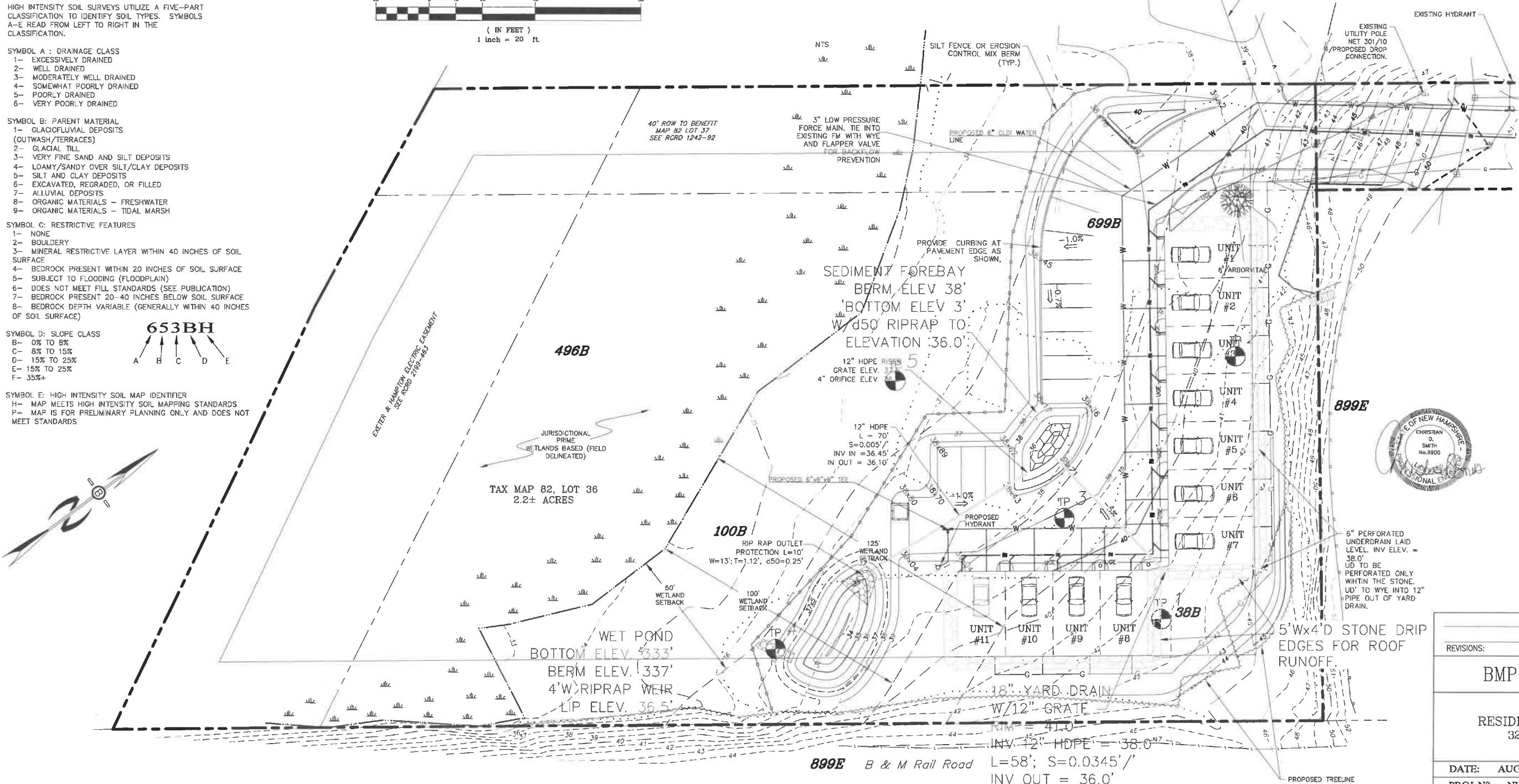
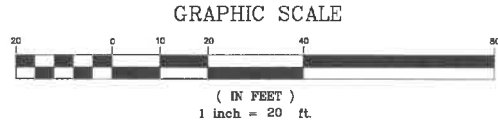
- 1- NONE
- 2- BOULDERS
- 3- MINERAL RESTRICTIVE LAYER WITHIN 40 INCHES OF SOIL SURFACE
- 4- BEDROCK PRESENT WITHIN 20 INCHES OF SOIL SURFACE
- 5- SUBJECT TO FLOODING (FLOODPLAIN)
- 6- DOES NOT MEET FILL STANDARDS (SEE PUBLICATION)
- 7- BEDROCK PRESENT 20-40 INCHES BELOW SOIL SURFACE
- 8- BEDROCK DEPTH VARIABLE (GENERALLY WITHIN 40 INCHES OF SOIL SURFACE)

SYMBOL D: SLOPE CLASS

- B- 0% TO 8%
- C- 8% TO 15%
- D- 15% TO 25%
- E- 15% TO 25%
- F- 35%+

SYMBOL E: HIGH INTENSITY SOIL MAP IDENTIFIER

- H- MAP MEETS HIGH INTENSITY SOIL MAPPING STANDARDS
- P- MAP IS FOR PRELIMINARY PLANNING ONLY AND DOES NOT MEET STANDARDS



PREPARED FOR:
ONE HOME BUILDERS LLC
 PO BOX 334
 STRATHAM, NH 03885

BEALS · ASSOCIATES PLLC
 70 PORTSMOUTH AVE, STRATHAM, N.H. 03885
 PHONE: 603-583-4860, FAX: 603-583-4863

REVISIONS:	DATE:
BMP LOCATION PLAN	
PLAN FOR: RESIDENTIAL DEVELOPMENT 32 CHARTER STREET EXETER, NH	
DATE: AUG., 2021	SCALE: 1" = 40'
PROJ. NO: NH-1333	SHEET NO. 1 OF 1