

**PLANTING NOTES:**

- PLEASE REVIEW AND BECOME FULLY ACQUAINTED WITH THESE NOTES, CONSTRUCTION DETAILS, AND THE PLANTING PLAN.
- THE CONTRACTOR SHALL LOCATE AND VERIFY ALL EXISTING AND NEW UTILITY LINE LOCATIONS PRIOR TO PLANTING, AND SHALL REPORT ANY CONFLICT TO THE LANDSCAPE ARCHITECT OR OWNER'S REPRESENTATIVE.
- ALL PLANT MATERIAL SHALL CONFORM TO THE GUIDELINES ESTABLISHED BY THE "AMERICAN STANDARD FOR NURSERY STOCK" PUBLISHED BY THE AMERICAN SOCIETY OF NURSERY MEN, INC. LATEST EDITION.
- THE CONTRACTOR SHALL STAKE THE LOCATION OF ALL THE PROPOSED PLANT MATERIAL FOR APPROVAL BY THE LANDSCAPE ARCHITECT PRIOR TO PLANTING. NO PLANTS SHALL BE PLANTED BEFORE THE ACCEPTANCE OF ROUGH GRADING.
- THE BASE OF THE FLARE OF THE TREE TRUNK SHALL BE EXPOSED, IF NECESSARY, AND PLACED 2" ABOVE FINISH GRADE.
- ANY PROPOSED SUBSTITUTIONS OF PLANT SPECIES WILL BE PLANTS WITH EQUIVALENT OVERALL FORM, HEIGHT, BRANCHING HABIT, FLOWER COLOR, LEAF COLOR, FRUIT COLOR, AND TIME OF BLOOM, AS APPROVED BY THE LANDSCAPE ARCHITECT.
- EXISTING LOAM: STOCKPILING OF EXISTING LOAM IS SPECIFIED ELSEWHERE. REMOVE CLAY LUMPS, BRUSH, LITTER, ROOTS, STONES 1" AND LARGER, AND OTHER FOREIGN MATERIALS.
- ADDITIONAL LOAM: IF STOCKPILED LOAM QUANTITY IS INSUFFICIENT, PROVIDE LOAM, WHICH IS A "FINE SANDY LOAM", OR A "SANDY LOAM" DETERMINED BY MECHANICAL ANALYSIS AND BASED ON THE "U.S.D.A. CLASSIFICATION SYSTEM." IT SHALL BE OF UNIFORM COMPOSITION, WITHOUT ADDITION OF SUBSOIL. LOAM SHALL HAVE AN ACIDITY RANGE OF PH 5.8 TO PH 7.0 AND SHALL CONTAIN NOT LESS THAN 4% NOR MORE THAN 10% ORGANIC MATTER AS DETERMINED BY THE LOSS OF IGNITION OF OVEN-DRIED SAMPLES. PROVIDE LOAM WHICH IS FERTILE, FRIABLE, NATURAL LOAM FREE FROM SUBSOIL, CLAY LUMPS, BRUSH, LITTER, ROOTS, STONES 1" AND LARGER, AND ANY FOREIGN MATERIALS.
- PINE MULCH: PROVIDE PARTIALLY DECOMPOSED MINIMUM SIX MONTH AGED FINELY SHREDDED PINE BARK MULCH WITH DARK BROWN COLOR AND FREE OF WEEDS, EXCESSIVE FINE PARTICLES, STRINGY MATERIAL, AND CHUNKS OF WOOD THICKER THAN 1/2". PROVIDE BARK MULCH APPROVED BY THE LANDSCAPE ARCHITECT. APPLY TACKIFIED MULCH TO ALL SEEDED AREAS.
- ALL PLANTS SHALL BE PLUM VERTICALLY AFTER SETTLING.
- ALL PLANT MATERIAL SHALL BE MULCHED AFTER PLANTING.
- UNLESS OTHERWISE INDICATED, DICTATED BY CONDITIONS AT THE SITE, AND DIRECTED BY LANDSCAPE ARCHITECT OR OWNER'S REPRESENTATIVE, BACKFILL SHALL CONSIST OF UNAMENDED SOIL EXCAVATED FROM THE PLANTING PIT. BACKFILL IN 3-4" LAYERS AND CONSOLIDATE EACH LAYER WITH WATER TO ELIMINATE VOIDS AND ARE POCKETS BEFORE PLACING SUBSEQUENT LAYERS. CONTINUE UNTIL BACKFILL HAS REACHED FINISHED GRADE. WATER THOROUGHLY WHEN EXCAVATION IS BACK FILLED AND CONTINUE WATERING UNTIL SATURATED. IF EXISTING UNAMENDED SOIL IS NOT ACCEPTED, PROVIDE PLANTING SOIL MIXTURE CONSISTING OF 7 PARTS LOAM AND 1 PART HUMUS. MIX QUANTITY OF FERTILIZER AND SOIL AMENDMENTS AS RECOMMENDED BY SOIL ANALYSIS AND APPROVED BY THE LANDSCAPE ARCHITECT.
- WATERING: FLOOD ALL PLANTS WITH WATER TWICE WITHIN THE FIRST 24 HOURS AFTER PLANTING.
- LOAMING: LOOSEN SUBGRADE AND EXISTING LOAM AREAS BY DISCING OR ROTOTILLING TO MINIMUM DEPTH OF 6". REMOVE STONES GREATER THAN 1" AND ALL RUBBISH AND DEBRIS. PLACE LOAM IN TWO EQUAL LIFTS MIXING FIRST APPLICATION INTO LOOSENED SUBGRADE THEN PLACE SECOND LIFT TO BRING LOAM AFTER SETTLING AND COMPACTING TO THE LINES AND GRADES SHOWN IN THE CONTRACT DOCUMENTS, 6" DEEP MINIMUM. DO NOT HANDLE LOAM OR SUBSOIL IF IT IS WET OR FROZEN.
- AFTER LOAM HAS BEEN SPREAD, IT SHALL BE CAREFULLY PREPARED BY SCARIFYING AND HAND RAKING. ALL LARGE STIFF CLODS, LUMPS, BRUSH, ROOTS, STUMPS, LITTER AND FOREIGN MATTER, AND STONES OVER 1" DIAMETER SHALL BE REMOVED FROM THE LOAM. LOAM SHALL ALSO BE FREE OF SMALLER STONES IN EXCESSIVE QUANTITIES AS DETERMINED BY THE LANDSCAPE ARCHITECT.
- FINE GRADING: SET SUFFICIENT GRADE STAKES FOR CHECKING THE FINISHED GRADES. STAKES MUST BE SET AT THE BOTTOM AND TOP OF SLOPES. GRADES SHALL BE ESTABLISHED THAT ARE ACCURATE TO 1/10TH OF A FOOT EITHER WAY. CONNECT CONTOURS AND SPOT ELEVATIONS WITH AN EVEN SLOPE. ALL GRADING WILL INSURE DRAINAGE AWAY FROM STRUCTURES.
- FINE GRADE LAWN AREAS TO SMOOTH, FREE DRAINING, EVEN SURFACES WITH FINE TEXTURE. ROLL, RAKE AND DRAW LAWN AREAS TO FLATTEN RIDGES AND FILL DEPRESSIONS, EXCEPT AT SELECT AREAS SHOW ON THE DRAWINGS. CONTROL MOISTURE CONTENT TO MAINTAIN OPTIMUM CONDITIONS, BUT DO NOT CREATE A MUDDY CONDITION.
- ROLLING - TYPICAL: ROLL THE ENTIRE AREA WITH A HAND ROLLER WEIGHING NOT MORE THAN 100 POUNDS. DURING THE ROLLING, ALL DEPRESSIONS CAUSED BY SETTLEMENT OF ROLLING SHALL BE FILLED WITH ADDITIONAL LOAM AND THE SURFACE SHALL BE REGARDED AND ROLLED UNTIL PRESENTING A SMOOTH AND EVEN FINISH TO THE REQUIRED GRADE OR TO THE SHAPES AND CONFIGURATIONS AS SHOWN ON THE DETAILS.
- THE SILT FENCE SHALL BE LIMIT OF SEEDING UNLESS OTHERWISE INDICATED ON THE DRAWINGS. ALL AREAS DISTURBED OUTSIDE THE LIMIT OF WORK SHALL BE SEEDED AS INDICATED ON THE DRAWINGS AND IN NOTES. IN CASE OF DISCREPANCIES BETWEEN THE QUANTITIES SHOWN ON THE PLANT SCHEDULE AND THE QUANTITIES SHOWN ON THE PLANTING PLAN, THE QUANTITIES ON THE PLANTING PLAN SHALL BE PROVIDED BY THE CONTRACTOR.

**PRIME WETLAND AND PRIME WETLAND BUFFER RESTORATION NOTES:**

JAPANESE KNOTWEED AND PURPLE LOOSESTRIPE HAVE BEEN IDENTIFIED AND WILL REQUIRE REMOVAL AS FOLLOWS: REMOVE INVASIVE SPECIES FOLLOWING ACCEPTED METHODS AS DEFINED IN THE NHDOT INVASIVE SPECIES CONTROL MANUAL. THE USE OF HERBICIDE, APPLIED BY A LICENSED APPLICATOR FAMILIAR WITH INVASIVE SPECIES CONTROL METHODS IS RECOMMENDED. IT IS FURTHER RECOMMENDED TO USE A WICK APPLICATION TO PREVENT HERBICIDE MIGRATION INTO THE WETLAND SYSTEM.

DISTURBED AREAS REQUIRING RESTORATION SEEDING SHALL BE CAREFULLY GRADED WITH THE ADDITION OF 4 INCHES OF TOPSOIL / COMPOST WITH A TEXTURE OF FINE SANDY LOAM OR SANDY LOAM SHALL BE PLACED.

WITHIN THE PRIME WETLAND, NEW ENGLAND EROSION CONTROL/RESTORATION MIX FOR DETENTION BASINS AND MOIST SITES SHALL BE USED AT A RATE OF 35 LBS./ACRE. THIS SEED MIX IS AVAILABLE AT NEW ENGLAND WETLAND PLANTS, INC. WWW.NEWP.COM

WITHIN THE PRIME WETLAND BUFFER, NEW ENGLAND SEMI-SHADE GRASS AND FORBS MIX SHALL BE USED AT A RATE OF 30 LBS./ACRE. THIS SEED MIX IS AVAILABLE AT NEW ENGLAND WETLAND PLANTS, INC. WWW.NEWP.COM

IN ADDITION TO SEEDING DISTURBED AREAS WITHING THE PRIME WETLAND BUFFER 145 TREES/SHRUBS FROM THE FOLLOWING LIST SHALL BE PLANTED. NO MORE THAN 25 SHRUBS OF ANY SINGLE SPECIES SHALL BE USED. BOTH SPECIES WITH A WETLAND INDICATOR STATUS OF FACW SHALL BE PLANTED ALONG THE WETLAND EDGE.

**WETLAND BUFFER RESTORATION PLANT LIST**

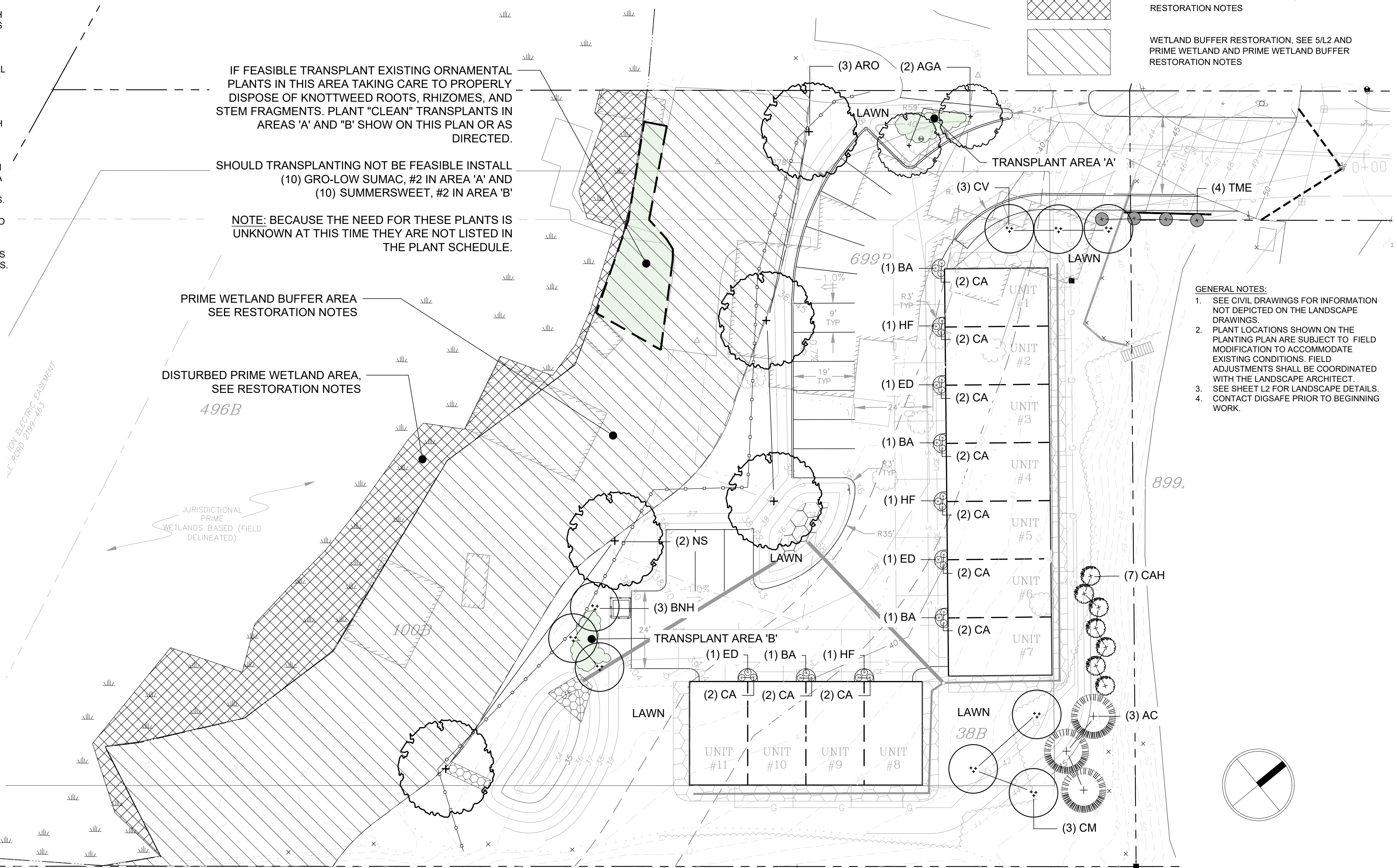
SCIENTIFIC NAME	COMMON NAME	WETLAND STATUS	SIZE / DELIVERY
AMELANCHIER CANIDENSIS	SHADBLOW/SERVICEBERRY	FAC	#1 / CONTAINER
ARONIA MELANOCARPA	BLACK CHOKEBERRY	FAC	#1 / CONTAINER
CORNUS SERICEA	RED OSIER DOGWOOD	FACW	#1 / CONTAINER
CORNUS RACEMOSA	GREY DOGWOOD	FAC	#1 / CONTAINER
ILEX GLABRA	INKBERRY	FACW	#1 / CONTAINER
ILEX VERTICILLATA	WINTERBERRY	FAC	#1 / CONTAINER
SPIREA LATIFOLIA	MEADOWSWEET	FAC	#1 / CONTAINER

**Plant Schedule**

DECIDUOUS SHADE OR STREET TREES					
QTY.	ABRV.	SCIENTIFIC NAME	COMMON NAME	SIZE	REMARKS
3	ARO	ACER RUBRUM 'OCTOBER GLORY'	OCTOBER GLORY RED MAPLE	3"-3 1/2" CAL.	B&B
2	NS	NYSSA SYLVATICA 'WILDFIRE'	WILDFIRE TUPELO	2"-2 1/2" CAL.	B&B
5					
DECIDUOUS UNDERSTORY OR FLOWERING FREES					
QTY.	ABRV.	SCIENTIFIC NAME	COMMON NAME	SIZE	REMARKS
2	AGA	AMELANCHIER x GRANDIFLORA 'AUTUMN BRILLIANCE'	AUTUMN BRILLIANCE SERVICEBERRY	6'-8' HT.	MULTI-STEM / B&B
3	CM	CORNUS MAS	CORNELIANCHERRY DOGWOOD	7'-8' HT.	MULTI-STEM / B&B
3	BNH	BETULA NIGRA 'HERITAGE' CLUMP	CLUMP 'HERITAGE' BIRCH	8'-10' HT.	MULTI-STEM / B&B
3	CV	CHIONANTHUS VIRGINICUS	WHITE FRINGETREE	6'-8' HT.	MULTI-STEM / B&B
11					
EVERGREEN TREES					
QTY.	ABRV.	SCIENTIFIC NAME	COMMON NAME	SIZE	REMARKS
3	AC	ABIES CONCOLOR	WHITE FIR	6'-7' HT.	B&B
3					
SHRUBS					
QTY.	ABRV.	SCIENTIFIC NAME	COMMON NAME	SIZE	REMARKS
7	CAH	CLETHRA ALNIFOLIA 'HUMMINGBIRD'	WHITE COMPACT SUMMERSWEET	2'-2 1/2' HT.	CONTAINER
4	TME	TAXUS MEDIA 'EVER-LOW'	EVER-LOW YEW	18"-24" SPD.	B&B
11					
PERENNIALS AND GRASSES					
QTY.	ABRV.	SCIENTIFIC NAME	COMMON NAME	SIZE	REMARKS
4	BA	BAPTISIA AUSTRALIS	FALSE INDIGO	#3	CONTAINER
20	CA	CALAMAGROSTIS ACUTIFLORA 'KARL FOERSTER'	FEATHER REED GRASS	#2	CONTAINER
3	ED	EUPATORIUM DUBIUM 'BABY JOE'	DWARF JOE PYE WEED	#2	CONTAINER
3	HF	HEMEROCALLIS FLAVA	DAYLILLY	#2	CONTAINER
30					

**Legend**

- DECIDUOUS SINGLE-STEMMED TREE PLANTING, SEE 1/L2
- DECIDUOUS MULTI-STEMMED TREE PLANTING, SEE 2/L2
- EVERGREEN TREE PLANTING, SEE 3/L2
- SHRUB PLANTING, SEE 7/L2
- PERENNIAL / ORNAMENTAL GRASS PLANTING, SEE 6/L2
- LOAM AND LAWN SEED MIX, SEE 4/L2
- PRIME WETLAND RESTORATION, SEE 5/L2 AND PRIME WETLAND AND PRIME WETLAND BUFFER RESTORATION NOTES
- WETLAND BUFFER RESTORATION, SEE 5/L2 AND PRIME WETLAND AND PRIME WETLAND BUFFER RESTORATION NOTES



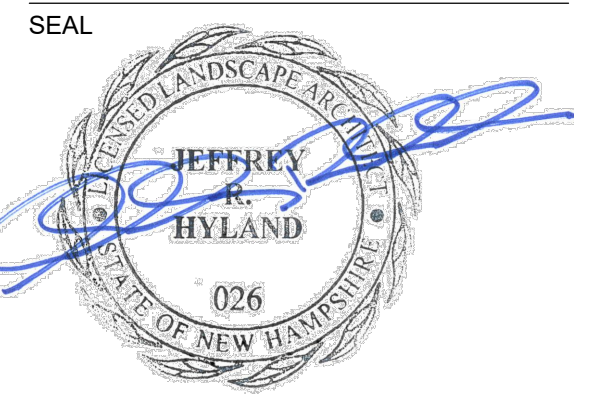
**RESIDENTIAL DEVELOPMENT**  
 32 CHARTER ST., EXETER, NH 03833  
 ONE HOME BUILDERS, LLC  
 PO BOX 334 STRATHAM, NH 03885

**LANDSCAPE PLAN**

REVISION LOG

REV#	DATE	DESCRIPTION

PROJECT NO. 21062.0  
 DESIGN BY J. HYLAND / K.OSGOOD  
 DRAWN BY K.OSGOOD  
 CHECKED BY J. HYLAND  
 DATE SEPTEMBER 17, 2021  
 SCALE 1" = 20'-0"

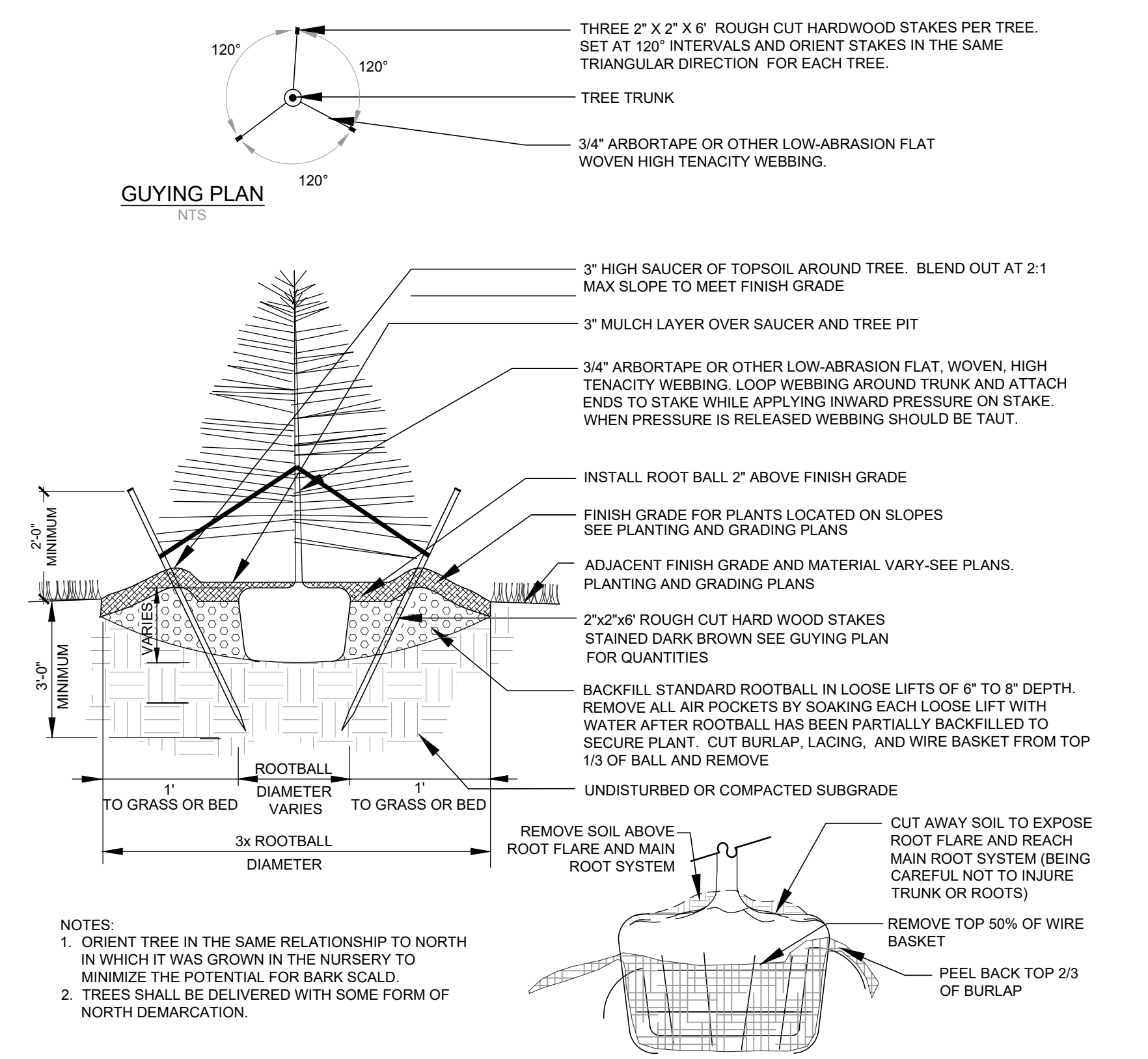
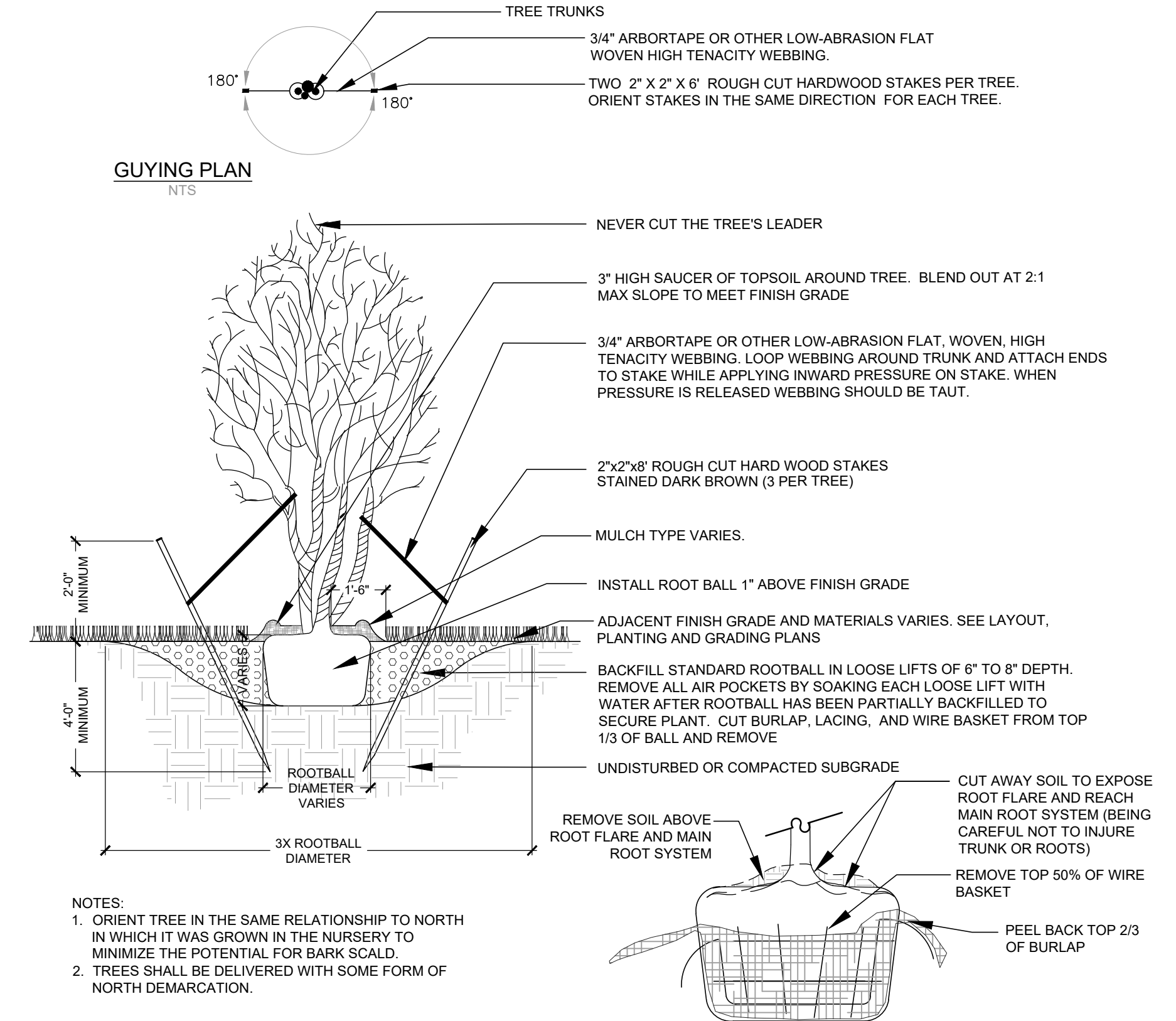
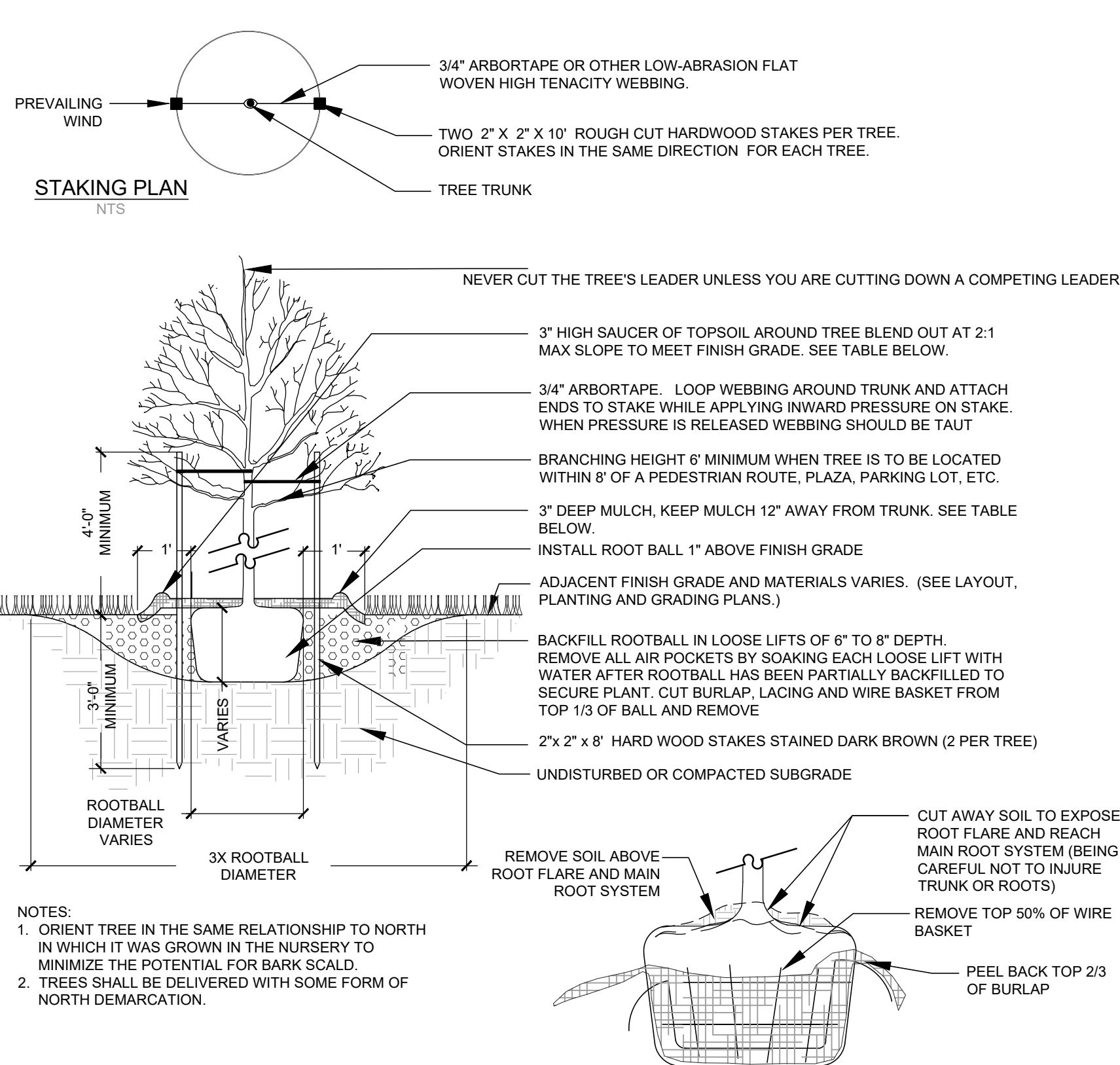


**L1**

DRAWING SUBMITTED FOR TOWN REVIEW

I:\DKS\STATION\Projects\21062.0 - Charter Street Condominiums\Drawings\LD\_SP\_210917.dwg, JRH 9/17/2021 11:37:42 AM





### Deciduous Single-Stemmed Tree Planting

Not to Scale

©IRONWOOD 2021

1  
L2

### Deciduous Multi-Stemmed Tree Planting

Not to Scale

©IRONWOOD 2021

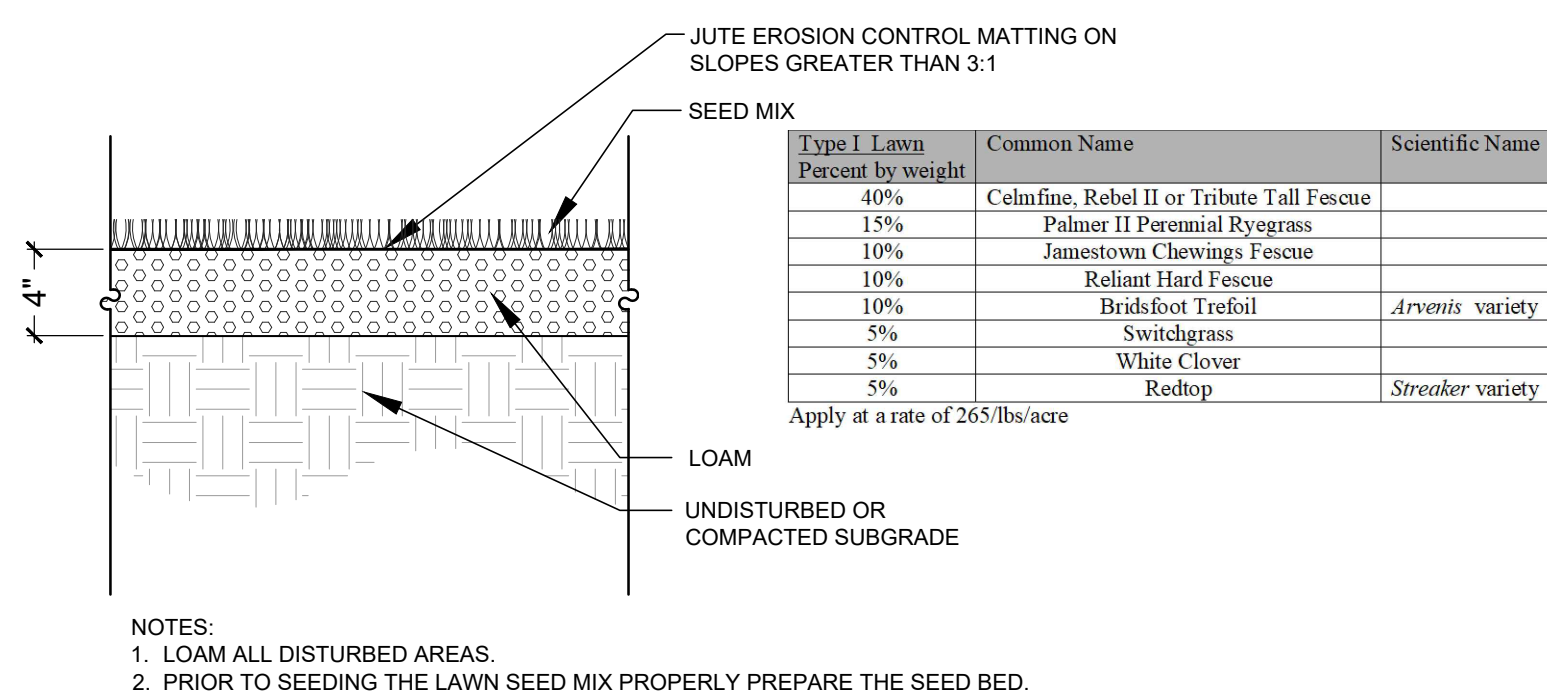
2  
L2

### Evergreen Tree Planting

Not to Scale

©IRONWOOD 2021

3  
L2

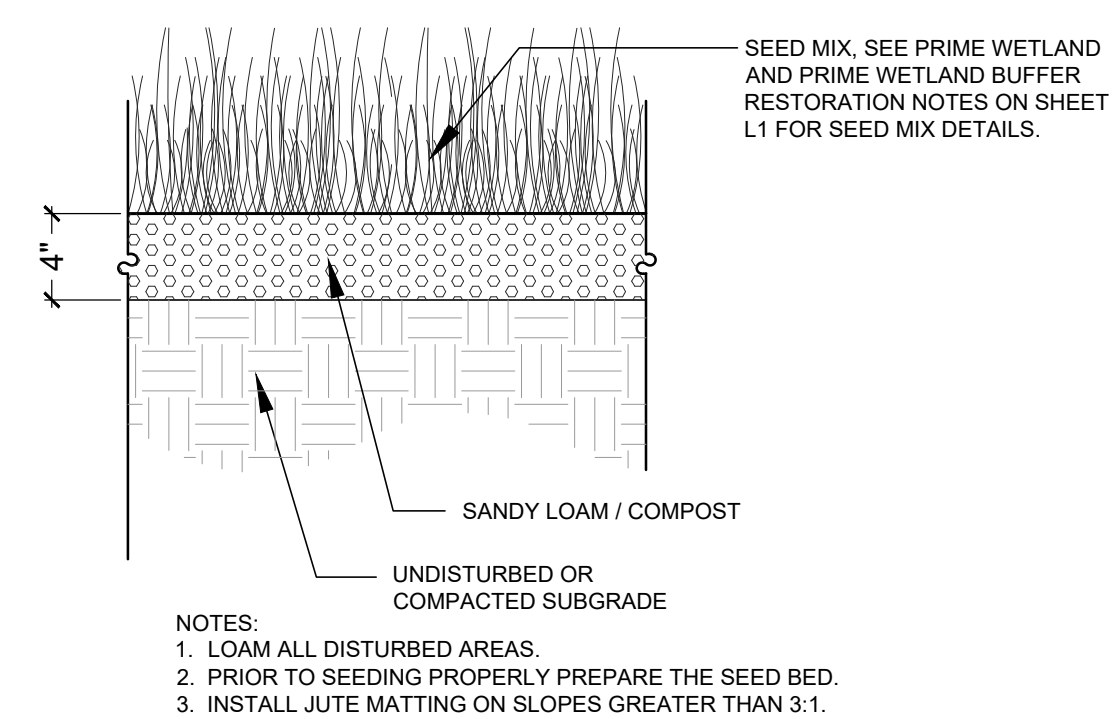


### Loam and Lawn Seed Mix

Not to Scale

©IRONWOOD 2021

4  
L2

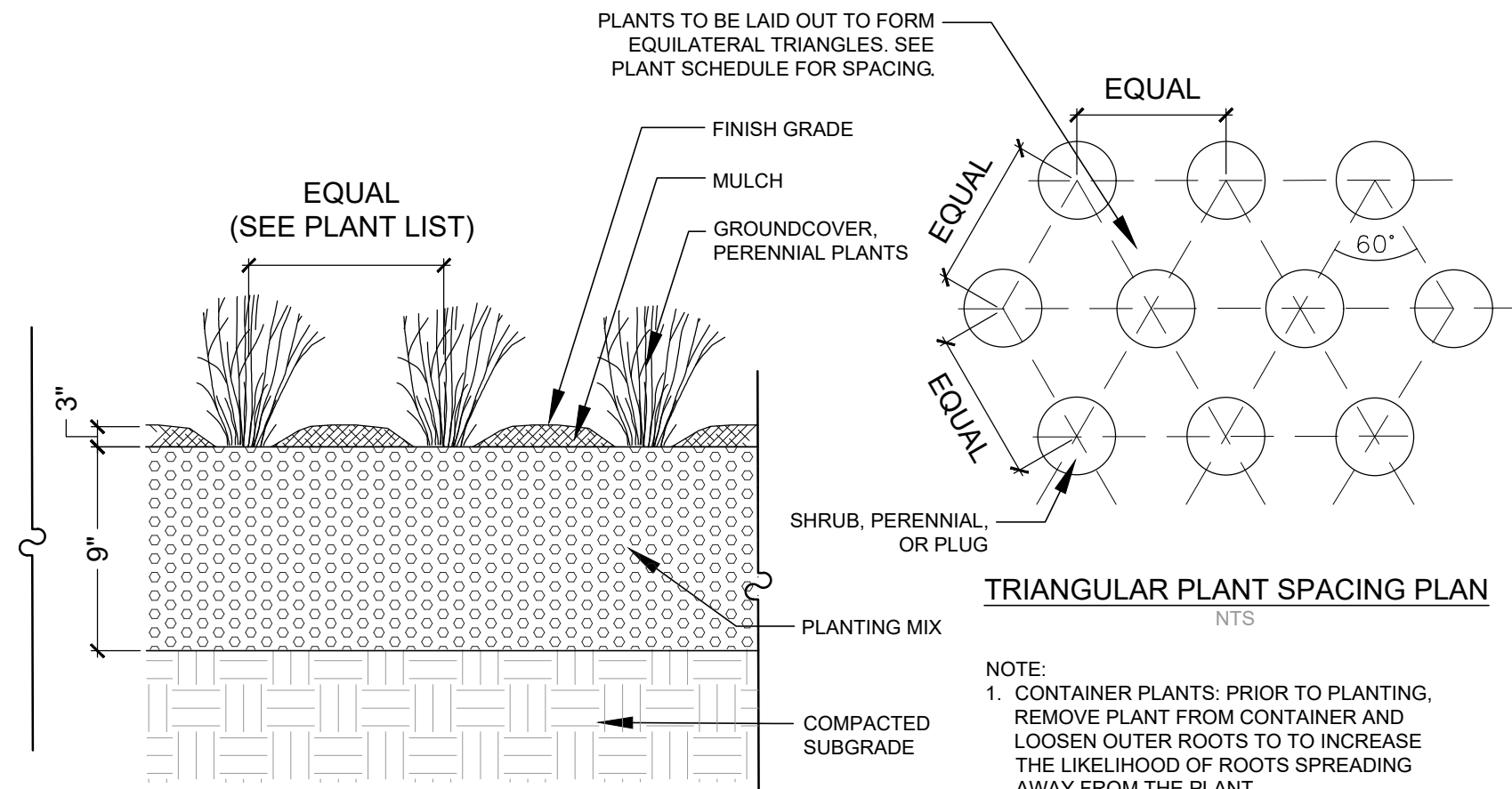


### Loam and Restoration Seed Mix

Not to Scale

©IRONWOOD 2021

5  
L2

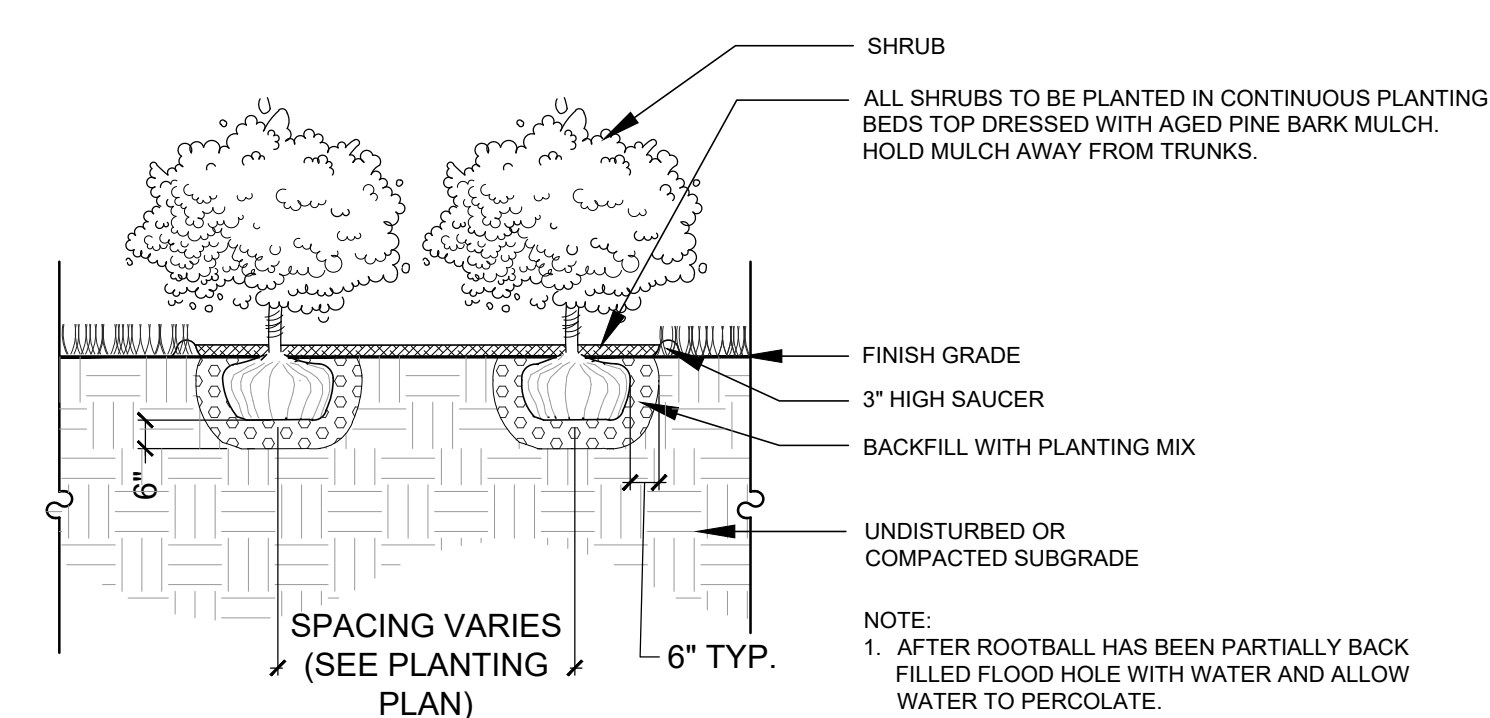


### Perennial / Ornamental Grass Planting

Not to Scale

©IRONWOOD 2021

6  
L2



### Shrub Planting

Not to Scale

©IRONWOOD 2021

7  
L2

I:\SKYSTATION\Projects\21062.0 - Charter Street Condominiums\Drawings\ID\_SP\_210917.dwg: JRH 9/17/2021 11:21:14 AM