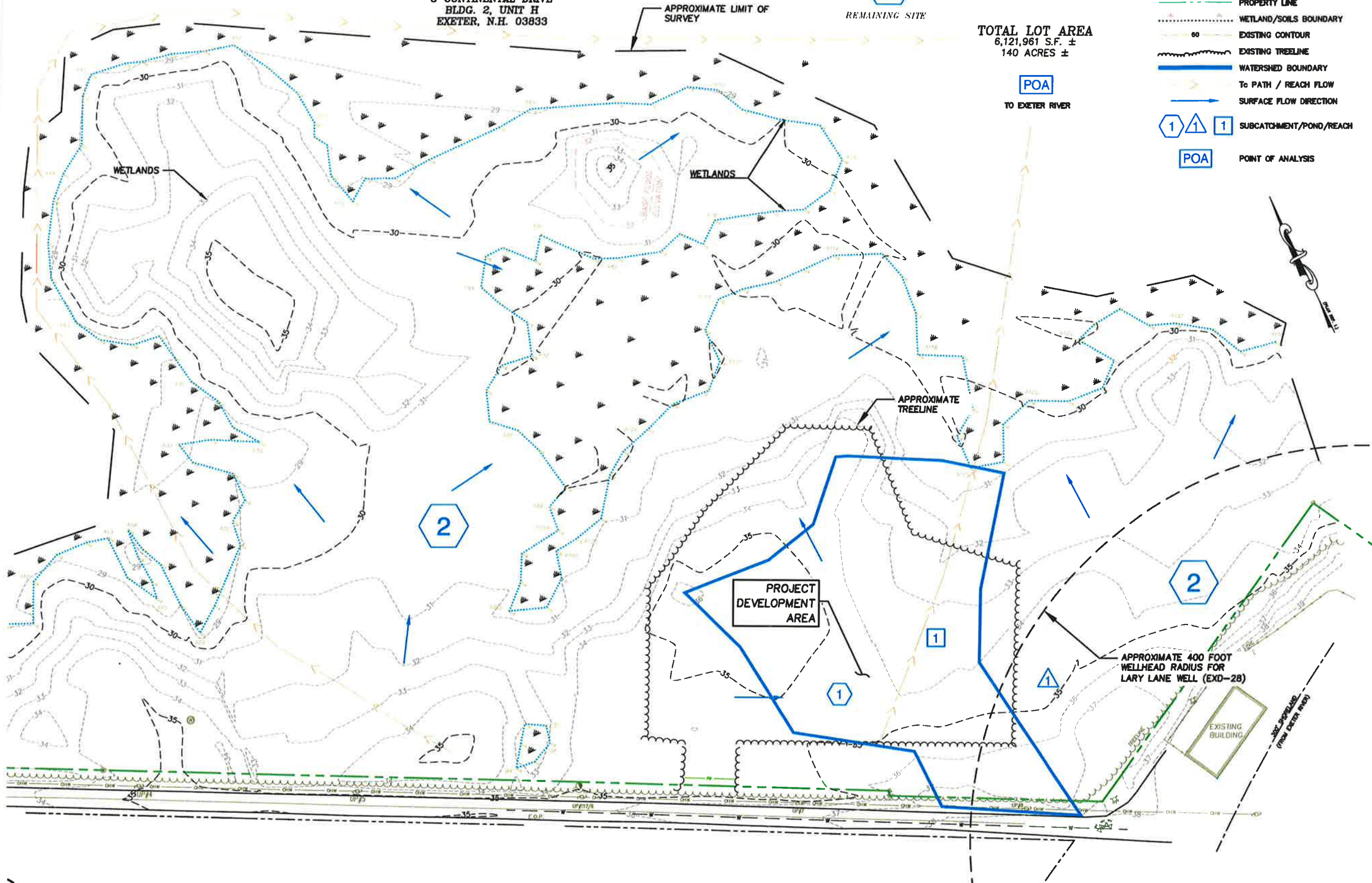


WETLANDS DELINEATION BY
GOVE ENVIRONMENTAL
SERVICES, INC.
8 CONTINENTAL DRIVE
BLDG. 2, UNIT H
EXETER, N.H. 03833



TOTAL LOT AREA
6,121,961 S.F. ±
140 ACRES ±

LEGEND

- PROPERTY LINE
- WETLAND/SOILS BOUNDARY
- EXISTING CONTOUR
- EXISTING TREE LINE
- WATERSHED BOUNDARY
- To PATH / REACH FLOW
- SURFACE FLOW DIRECTION
- SUBCATCHMENT/POND/REACH
- POA POINT OF ANALYSIS



PHILLIPS EXETER ACADEMY



133 COURT STREET PORTSMOUTH, NH 03801
(603) 435-2335 www.ALTUS-ENG.com



ISSUED FOR:
PLANNING BOARD APPROVAL

ISSUE DATE:
JUNE 11, 2021

NO.	DESCRIPTION	BY	DATE
0	INITIAL SUBMITTAL	CDB	05/18/21
1	TRC COMMENTS	CDB	06/11/21

DRAWN BY: _____ CDB
APPROVED BY: _____ EDW
DRAWING FILE: 4749SITE.DWG

SCALE: 1" = 50'

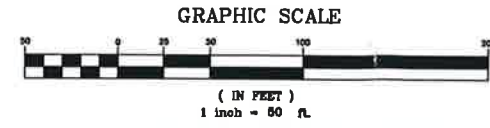
OWNER:
PHILLIPS EXETER ACADEMY
20 MAIN STREET
EXETER, NH

PROJECT:
GROUNDS STORAGE YARD
TAX MAP 94 LOT 19

PHILLIPS EXETER ACADEMY
LARY LANE
EXETER, NH 03833

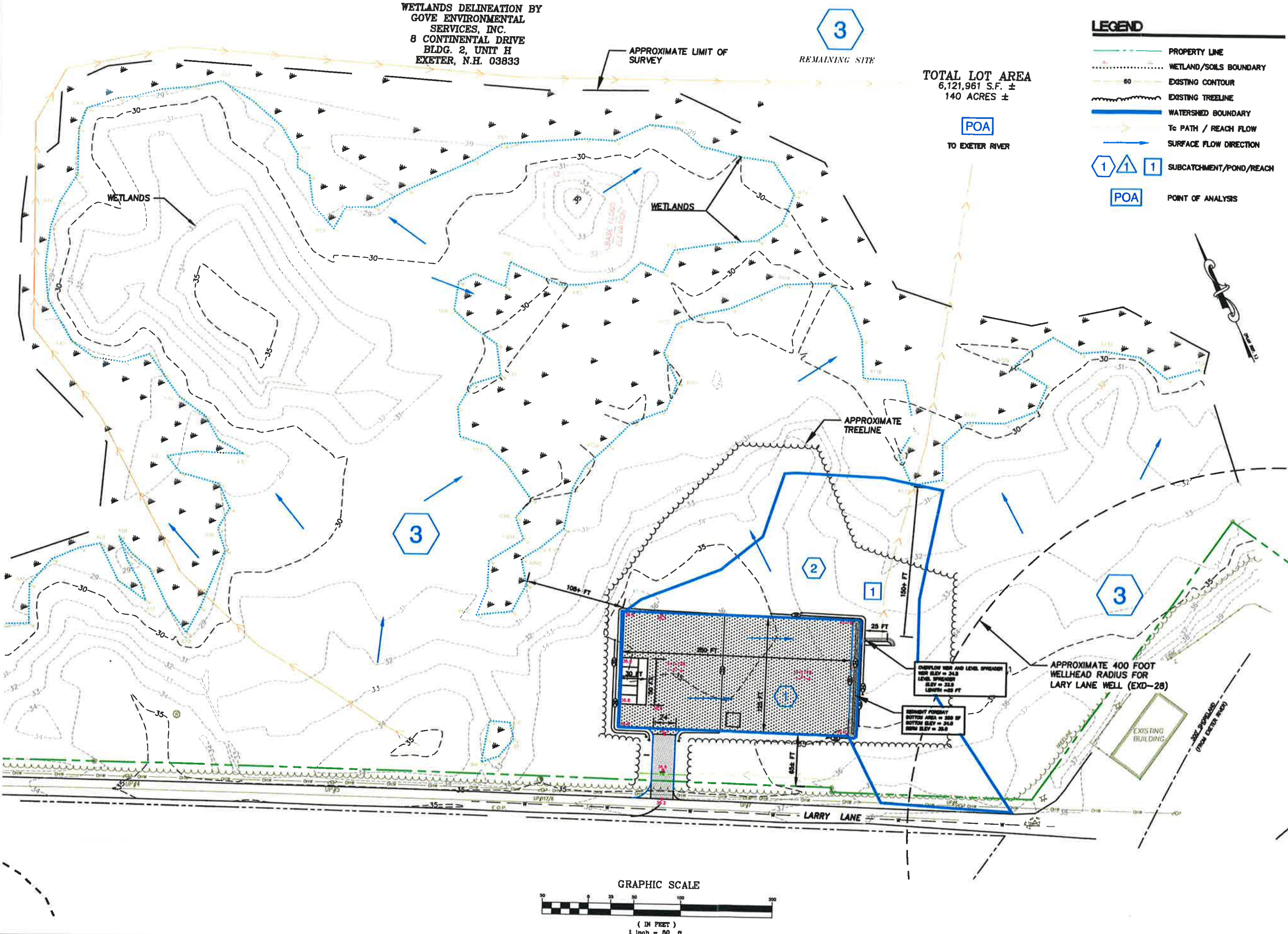
TITLE:
PRE DEVELOPMENT WATERSHED PLAN

SHEET NUMBER:
W-1



P4749

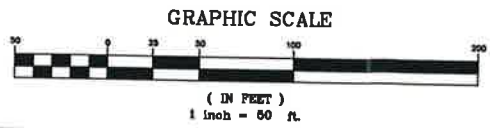
WETLANDS DELINEATION BY
GOVE ENVIRONMENTAL
SERVICES, INC.
8 CONTINENTAL DRIVE
BLDG. 2, UNIT H
EXETER, N.H. 03833



- LEGEND**
- PROPERTY LINE
 - WETLAND/SOILS BOUNDARY
 - EXISTING CONTOUR
 - EXISTING TREELINE
 - WATERSHED BOUNDARY
 - TO PATH / REACH FLOW
 - SURFACE FLOW DIRECTION
 - SUBCATCHMENT/POND/REACH
 - POINT OF ANALYSIS

TOTAL LOT AREA
6,121,961 S.F. ±
140 ACRES ±

POA
TO EXETER RIVER



PHILLIPS EXETER ACADEMY



133 COURT STREET PORTSMOUTH, NH 03801
(603) 433-2330 www.ALTUS-EHD.com



ISSUED FOR:
PLANNING BOARD APPROVAL
ISSUE DATE:
JUNE 11, 2021

REVISIONS

NO.	DESCRIPTION	BY	DATE
0	INITIAL SUBMITTAL	CDB	05/18/21
1	TRC COMMENTS	CDB	06/11/21

DRAWN BY: _____ CDB
APPROVED BY: _____ EDW
DRAWING FILE: 4749SITE.DWG

SCALE: 1" = 50'

OWNER:
PHILLIPS EXETER ACADEMY
20 MAIN STREET
EXETER, NH

PROJECT:
GROUNDS STORAGE YARD
TAX MAP 91 LOT 19

PHILLIPS EXETER ACADEMY
LARY LANE
EXETER, NH 03833

TITLE:
POST DEVELOPMENT WATERSHED PLAN

SHEET NUMBER:
W-2

P4749