

**New Hampshire Small MS4 General  
Permit**

**Annual Report**

**Town of Exeter**

**Permit Year 2**

**Reporting Period: July 1, 2019 to June 30, 2020**

**EPA NPDES Permit Number: NHR041007**

# Certification

“I certify under penalty of law that this document and all attachments were prepared under my direction or supervision in accordance with a system designed to assure that qualified personnel properly gathered and evaluated the information submitted. Based on my inquiry of the person or persons who manage the system, or those persons directly responsible for gathering the information, the information submitted is, to the best of my knowledge and belief, true, accurate, and complete. I am aware that there are significant penalties for submitting false information, including the possibility of fine and imprisonment for knowing violations.”

Printed Name	<input type="text" value="Russell Dean"/>
Title	<input type="text" value="Town Manager"/>
Signature	<input type="text" value="Handwritten Signature"/>
Date	<input type="text" value="9/28/2020"/>

# Contact Information

## Primary MS4 Program Manager Contact Information:

Name: Jennifer Mates, PE  
Title: Assistant Town Engineer  
Street Address: 13 Newfields Road  
Exeter NH 03833  
Email: [jmates@exeternh.gov](mailto:jmates@exeternh.gov)  
Phone Number: (603) 418-6431

# Small MS4 Authorization

The following annual report is intended to document on the activities undertaken over the reporting period from July 1, 2019 – June 30, 2020 in accordance with the Notice of Intent (NOI). The NOI can be found at the following (document name or web address):

<https://www3.epa.gov/region1/npdes/stormwater/nh/tms4noi/exeter.pdf>

Compliance activities have been identified and described in the Town of Exeter’s Stormwater Management Program (SWMP) and Illicit Discharge Detection and Elimination (IDDE) Plan. These documents can be found at the following (document name or web address) and will be referred to throughout this report:

SWMP:

[https://www.exeternh.gov/sites/default/files/fileattachments/public\\_works/page/38331/2019.06\\_exeternh\\_swmp.pdf](https://www.exeternh.gov/sites/default/files/fileattachments/public_works/page/38331/2019.06_exeternh_swmp.pdf)

IDDE Plan: Located at the Exeter Department of Public Works – 13 Newfields Road

# **MCM 1 - PUBLIC EDUCATION AND OUTREACH**

## **BMP 1: Pet Waste Brochures/Pamphlets**

### **Document Name and/or Web Address:**

"Every Drop" postcards or flyer <https://stateofourestuaries.org/everydrop/every-drop-matters/for-towns/>

See Attachments for BMP 1

See Attachment for Facebook Post "Lifetime Post Total Reach"

See Attachment for Additional Public Participation

### **Description:**

Distribution and promotion of "Every Drop" postcards or flyer with proper pet waste management, impacts of improper management, pet waste ordinance, and disposal requirements messaging. May include a pledge to pick up pet waste to be made available during dog registration and other events or venues (veterinarians, dog training, groomers, etc.). Every Drop is a collaborative education effort with PREP, NHDES, and other partners.

In Permit Year 2, the Town continued to use the same "Every Drop" flyer as in Permit Year 1. Flyers were made available at the Town Clerk and DPW offices. It was also shared via social media on DPW Facebook page and the Think Blue Exeter website. A "Think Blue: Pet Waste" poster, which included the "Every Drop" QR code and website, was displayed at the regional Household Hazardous (HHW) Collection event to be viewed by the people waiting to drop off their waste. There were 181 households from Exeter who attended the HHW event and are assumed to have seen the poster. See Attachment for Additional Public Participation for a copy of the Pet Waste poster displayed at the HHW event. One person from Exeter signed the "Every Drop" pledge in Permit Year 2 (<https://stateofourestuaries.org/everydrop/petpledge/>). As an additional method to assess the measurable goal, the "Lifetime Post Total Reach" for social media posts in Permit Year 2 related to BMP 1 was tallied. The two Pet Waste posts had a "Lifetime Post Total Reach" of 867.

### **Targeted Audience:**

Residents, businesses, institutions, and commercial facilities

### **Measurable Goal(s):**

Dog owners and/or dog walkers are aware of the potential water quality impacts from pet waste, local pet waste ordinances, and how to dispose of pet waste properly. If pledges are signed, there will be an increase of dog owners committed to picking up pet waste. For additional information, refer to: [https://www4.des.state.nh.us/nh-ms4/?page\\_id=54](https://www4.des.state.nh.us/nh-ms4/?page_id=54), "Minimum Control Measure 1: Public Outreach and Education".

### **Message Date:**

Annually in spring and throughout the permit year

## **BMP 2: Clean Water/Healthy Lawns Brochures/Pamphlets**

### **Document Name and/or Web Address:**

5 Easy Steps “Healthy Lawns – Clean Water”: <https://www.exeternh.gov/bcc/exeters-healthy-lawns-clean-water-initiative>

Facebook Page: <https://www.facebook.com/exeterhealthylawns-cleanwater/>

See Attachment for BMP 2

See Attachment for Facebook Post “Lifetime Post Total Reach”

### **Description:**

Distribute Clean Water/Healthy Lawns information. The following is a summary of Healthy Lawns Clean Water efforts in Permit Year 2:

- Healthy Lawns Clean Water magnets were made available at the Town Clerk’s office. A minimum of 50 magnets were picked up by residents.
- Healthy Lawns Clean Water magnets (9) were distributed with rain barrel purchases.
- Twelve rain barrels were sold to nine individual homes.
- The Healthy Lawns Clean Water Facebook page has 146 likes and 156 followers, as of September of 2020.
- The Healthy Lawns Clean Water Facebook page continued to post new content.
- Content from the Healthy Lawns Clean Water Facebook page was shared to the DPW Facebook page.

The Town continued engagement on social media and continued interest in rain barrels through sales. As a method to assess the measurable goal, the “Lifetime Post Total Reach” for social media posts in Permit Year 2 related to BMP 2 was tallied. The 15 Healthy Lawns Clean Water posts had a “Lifetime Post Total Reach” of 2,961.

### **Targeted Audience:**

Residents, businesses, institutions, and commercial facilities

### **Measurable Goal(s):**

To see an increased awareness of proper fertilizer use.

### **Message Date:**

Annually in the spring

## **BMP 3: Development Regulations Fact Sheet Brochures/Pamphlets**

### **Document Name and/or Web Address:**

[https://www.exeternh.gov/sites/default/files/fileattachments/planning\\_board/page/14051/withcover2019\\_for\\_spr\\_app.pdf](https://www.exeternh.gov/sites/default/files/fileattachments/planning_board/page/14051/withcover2019_for_spr_app.pdf)

### **Description:**

Distribute Regulations Fact Sheet to developers when they inquire about new land development projects. In Permit Year 2, the Town decided to rely on the checklist in the Planning Board applications for outreach to developers rather than distributing a separate

regulations fact sheet. This approach was discussed and reviewed with NHDES. There were 16 Planning Board applications submitted during Permit Year 2.

**Targeted Audience:**

Developers

**Measurable Goal(s):** To see an increased awareness of the local, state, and federal stormwater regulations.

**Message Date:**

Permit Year 2

**BMP 4: Advertise Green SnoPro Certification Website**

Deliverables will progress in accordance with the accepted NOI and is scheduled for Permit Year 3.

**BMP 5: Septic Smart Displays/Posters/Kiosks**

**Document Name and/or Web Address:**

Think Blue Exeter: <https://www.exeternh.gov/bcc/think-blue-septic-system-maintenance>

See Attachment for BMP 3

See Attachment for Facebook Post “Lifetime Post Total Reach”

See Attachment for Additional Public Participation

**Description:**

Utilize Septic Smart posters to encourage residents to inspect and maintain their septic systems each year. In Permit Year 2, the Septic Smart posters were displayed at the Town Office and Exeter Public Library from September 16 through September 20, 2019. Additionally, the Town posted information during Septic Smart week on the DPW Facebook page, and the Think Blue Exeter website includes a septic system maintenance page with similar information. A Septic Smart poster was also displayed at the regional HHW Collection event to be viewed by the people waiting to drop off their waste. There were 181 households from Exeter who attended the HHW event and are assumed to have seen the poster. See Attachment for Additional Public Participation for a copy of the Septic Smart poster displayed at the HHW event. As a method to assess the measurable goal, the “Lifetime Post Total Reach” for social media posts in Permit Year 2 related to BMP 5 was tallied. The 13 Septic System posts had a “Lifetime Post Total Reach” of 9,086.

**Targeted Audience:**

Residents with septic systems

**Measurable Goal(s):**

To see an increase in septic system testing/maintenance.

**Message Date:**

Annually in the fall during Septic Smart week.

## **BMP 6: Leaf and Yard Waste Collection**

### **Document Name and/or Web Address:**

See Attachment for BMP 6

See Attachment for Facebook Post “Lifetime Post Total Reach”

See Attachment for Additional Public Participation

### **Description:**

Post notices of leaf and yard waste collection. In Permit Year 2, notices were posted on the town’s website and Facebook pages (DPW and Town of Exeter) as well as in the Exeter News-Letter and at the Town Office in the Fall of 2019 and Spring of 2020. A poster was also displayed at the regional HHW Collection event to be viewed by the people waiting to drop off their waste. There were 181 households from Exeter who attended the HHW event and are assumed to have seen the poster. See Attachment for Additional Public Participation for a copy of the Leaf Pick-up poster displayed at the HHW event. A Yard Waste poster will be displayed at the HHW event in Permit Year 3 that also includes information on the importance of proper disposal of leaf and yard waste.

Residents are allowed to leave up to 12 bags of leaf litter at the curb for collection every spring and fall as well as drop off leaf and yard waste at the transfer station. On a calendar year basis, the total estimated volume of yard waste collected is 600 cubic yards. The amount has been around the same each year. As a method to assess the measurable goal, the “Lifetime Post Total Reach” for social media posts in Permit Year 2 related to BMP 6 was tallied. The 13 Leaf/Yard Waste posts had a “Lifetime Post Total Reach” of 8,044.

### **Targeted Audience:**

Residents, businesses, institutions, and commercial facilities

### **Measurable Goal(s):**

To see an increase in the disposal of leaf and yard waste at the transfer station.

### **Message Date:**

Annually in the spring and fall

## **BMP 7: Exeter Conservation Commission’s Guest Speaker Night**

Deliverables will progress in accordance with the accepted NOI and is scheduled for Permit Year 4.

Additional Conservation Commission events held in Permit Year 2 included the Exeter Conservation Commission and the Rockingham Planning Commission (RPC) hosted the Exeter Water Trail Tour on August 13, 2019. The event was open to the public and well-advertised; however, only four members of the Conservation Commission and a member of the RPC attended. The Conservation Commission also hosted a full moon snowshoe walk on the Irvine conservation property on February 8, 2020, and talked about the importance of conservation of this land for Squamscott River shoreline protection. The

snowshoe event had 42 registrants. See Attachment for BMP 7 and Attachment for Facebook Post “Lifetime Post Total Reach” for additional information.

**BMP 8: Stormwater Pollution Prevention for Industrial Sites Flyer**

Deliverables will progress in accordance with the accepted NOI and are scheduled for Permit Year 5.

**Additional Public Education and Outreach**

The Town aired several water quality/pollution prevention themed Public Service announcements on their local cable channel throughout Permit Year 2. The Public Service announcements can be viewed on-demand on the Town’s website: [https://videoplayer.telvue.com/player/LyAOBTaTsmn\\_CnwjwcB5-VoxQtyoKR1P/categories/1750?autostart=false&showtabssearch=true](https://videoplayer.telvue.com/player/LyAOBTaTsmn_CnwjwcB5-VoxQtyoKR1P/categories/1750?autostart=false&showtabssearch=true) (see Attachment for Additional Public Education and Outreach)

The following is a list of water quality/pollution prevention themed videos that aired on the local cable access channel and the number of times they were played during Permit Year 2:

- How to Build a Rain Garden – 11 plays
- Pollution Prevention 101 – 48 plays
- Instream Flow Program: Water for People and Wildlife – 2 plays
- Instream Flow NHDES videos – 23 plays
- What is pollution prevention – 3 plays

Septic Smart videos, which support BMP 5, will be added to the rotation of Public Service announcements in Permit Year 3.

The Exeter Water Trail, which is open to the public, is an educational installation on the campuses of Main Street and Lincoln Street Elementary Schools. The signage includes topics dealing with stormwater runoff, water quality, flooding, watersheds, and the water cycle. Curriculum materials for the Water Trail are available to teachers at the Main Street and Lincoln Street Elementary Schools as optional curriculum.

**MCM 2 - PUBLIC PARTICIPATION**

**BMP 9: Public Review of Stormwater Management Program (SWMP)**

The Town of Exeter’s Stormwater Management Program (SWMP) is available to the public for review on the Town’s website or at the Public Works office during regular business hours. See Attachment for BMP 9 & 10.

**BMP 10: Public Participation in SWMP Development**

The public is encouraged to submit written comments on the SWMP. Instructions on how to do this (email address provided of where to submit comments) was added to the Town’s Stormwater website on September 24, 2019. See Attachment for BMP 9 & 10.



### **BMP 11: Shoreline/Waterbody**

No spring clean-ups were held as a result of COVID-19 in 2020. The Public Works promoted the Great Bay National Wildlife Refuge Shoreline Clean-Up that was held on September 29, 2019, on their Facebook page. Additionally, the Exeter-Squamscott River Local Advisory Committee (ESRLAC) continued their role of plan reviews along designated waterbodies. The ESRLAC is made up of citizen volunteers living in towns within the watershed, including two representatives from the Town of Exeter. They created a Facebook page with 235 followers.

### **Additional Public Participation**

A regional Household Hazardous Waste (HHW) Collection event was held at the Exeter Public Works Garage on October 19, 2019. Participation from Exeter residents increased from the previous year with 181 households participating (up from 167 in 2018). Posters were displayed at the HHW Collection event to promote BMP 1 (Pet Waste Brochures/Pamphlets), BMP 5 (Septic Smart Displays/Posters/Kiosks), and BMP 6 (Leaf and Yard Waste Collection). See Attachment for Additional Public Participation for a report on the HHW Collection event as well as the posters to promote BMPs 1, 5, and 6.

## **MCM 3 – ILLICIT DISCHARGE DETECTION AND ELIMINATION**

### **BMP 12: Sanitary Sewer Overflow (SSO) Inventory**

There were four SSOs identified in Permit Year 2. All were reported to EPA and other government agencies, as required. The list of SSOs is available at:  
<https://www.exeternh.gov/publicworks/combined-sewer-sanitary-sewer-overflows>.

### **BMP 13: Storm Sewer System Map**

Phase 1 mapping of all known stormwater infrastructure has been completed. The map is continually updated as new information is available, and is in progress in accordance with the accepted NOI.

### **BMP 14: Written IDDE Program Development**

A written IDDE plan has been developed. The IDDE plan was reviewed and updated in Permit Year 2.

### **BMP 15: Implement IDDE Program**

An initial outfall inventory and priority ranking has been completed and included in the IDDE plan. The development of written catchment investigation procedures was completed in Permit Year 2. During Permit Year 2, one illicit discharge was reported to DPW by the Building Inspector on February 27, 2020 (date of incident was February 26, 2020). The illicit discharge was a transitory (one-time) event resulting from flushing of a fire sprinkler line in a parking garage at the Squamscott Block building. The discharge contained very stagnant water and a small amount of glycerin glycol. The material was discharged into the street. The Highway Department responded the same day the incident was reported and cleaned the materials using absorbent materials and shovels. No formal enforcement action was required; however, the sprinkler company and owner were informed this was not acceptable.

Additionally, during smoke testing at a privately-owned mobile home park, the Town discovered an overflow pipe at a private sewer pump station that discharges to a private ditch. The Sewer Department is working with the owners to get the problem corrected.

**BMP 16: Implement Employee Training**

The City of Dover and UNH provided Illicit Discharge videos prepared by senior civil and environmental engineering students at the Seacoast Stormwater Coalition meeting on June 17, 2020. No additional training was held in Permit Year 2 as a result of COVID-19; however, an IDDE training was held on September 22, 2020 (Permit Year 3) at the Dover DPW Complex. The training was for the Town of Exeter Water & Sewer and Highway Department managers and foremen and hosted by UNH and City of Dover.

**BMP 17: Conduct Dry Weather Screening**

No dry weather screening was conducted in Permit Year 2. Dry weather screening will progress in accordance with the accepted NOI and is scheduled to begin in Permit Year 3.

**BMP 18: Conduct Wet Weather Screening**

No wet weather screening was conducted in Permit Year 2. Wet weather screening will progress in accordance with the accepted NOI and is scheduled to begin in Permit Year 3.

**BMP 19: Ongoing Screening**

Ongoing screening will progress in accordance with the accepted NOI (upon completion of the IDDE program).

**BMP 20: IDDE Regulations**

The existing Storm Drainage Ordinance prevents illegal discharges to the drainage system, with fines. The ordinance has been reviewed and did not require modification for compliance with the 2017 NH Small MS4 General Permit. **This BMP has been achieved.**

**MCM4 – CONSTRUCTION SITE STORMWATER RUNOFF CONTROL**

**BMP 21: Sediment and Erosion Control Ordinance**

The Town of Exeter will rely on the Site Plan Review and Subdivision Regulations as a regulatory mechanism to require the use of sediment and erosion control practices at construction sites. The Site Plan Review and Subdivision Regulations were amended in April of 2018 to meet the provisions of the 2017 NH Small MS4 General Permit. **This BMP has been achieved.**

**BMP 22: Site Plan Review Procedures**

The Town of Exeter relies on the Site Plan Review and Subdivision Regulations, which outline the site plan review procedures. The Site Plan Review and Subdivision Regulations were amended in April of 2018 to meet the provisions of the 2017 NH Small

MS4 General Permit. During Permit Year 2, eight Site Plan Review and eight Subdivision Applications were received by the Planning Department and reviewed by the Technical Review Committee.

**BMP 23: Procedures for Site Inspection and Enforcement of Erosion and Sediment Control Measures**

The Town of Exeter contracts with a local engineering firm to perform site inspections of erosion and sediment control measures during construction. Written site plan review and construction site inspection and enforcement procedures were developed and included in Appendix 4.1 of the Town's SWMP.

The Town of Exeter conducts construction site inspections on all projects that get Planning Board approval, and since the trigger for Planning Board approval is less than an acre, the Town does not track the number of sites greater than an acre, rather they track and inspect all projects that required Planning Board approval. During Permit Year 2, nine sites were inspected with approximately 35 inspections completed per site (weekly inspections are typical during the construction season of April through November). The total number of inspections is approximately 315. No formal enforcement action was needed; deficiencies noted were brought to the attention of the contractor during the site visit and corrected by the contractor.

**BMP 24: Construction and Site Waste Controls**

The Town of Exeter incorporated requirements for construction operators to control onsite wastes into the Site Plan Review and Subdivision Regulations, which were amended in April of 2018 to meet the provisions of the 2017 NH Small MS4 General Permit. **This BMP has been achieved.**

**MCM5 – POST CONSTRUCTION STORMWATER MANAGEMENT IN NEW DEVELOPMENT AND REDEVELOPMENT**

**BMP 25: Post-Construction Ordinance**

The Town of Exeter will rely on the Site Plan Review and Subdivision Regulations as a regulatory mechanism to address post-construction stormwater management. The Site Plan Review and Subdivision Regulations were amended in April of 2018 to meet the provisions of the 2017 NH Small MS4 General Permit. **This BMP has been achieved.**

**BMP 26: Street Design and Parking Lot Guidance Report**

Deliverables will progress in accordance with the accepted NOI and is scheduled for Permit Year 4.

**BMP 27: Green Infrastructure Report**

Deliverables will progress in accordance with the accepted NOI and is scheduled for Permit Year 4.

**BMP 28: List of Municipal Retrofit Opportunities**

Deliverables will progress in accordance with the accepted NOI and is scheduled for Permit Year 4.

**BMP 29: As-built Plans for On-site Stormwater Controls**

The Town of Exeter will rely on the Site Plan Review and Subdivision Regulations for procedures to require submission of as-built plans from private development projects. The Site Plan Review and Subdivision Regulations were amended in April of 2018 to meet the provisions of the 2017 NH Small MS4 General Permit. **This BMP has been achieved.**

**MCM6 – GOOD HOUSEKEEPING AND POLLUTION PREVENTION FOR PERMITTEE OWNED OPERATIONS**

**BMP 30: Parks and Open Spaces Operations and Maintenance (O&M) Procedures**

Written Parks and Open spaces O&M procedures were developed and included in Appendix 6.1 of the Town’s SWMP.

**BMP 31: Buildings and Facilities Operations and Maintenance (O&M) Procedures**

Written Buildings and Facilities O&M procedures were developed and included in Appendix 6.1 of the Town’s SWMP.

**BMP 32: Vehicles and Equipment Operations and Maintenance (O&M) Procedures**

Written Vehicles and Equipment O&M procedures were developed and included in Appendix 6.1 of the Town’s SWMP.

**BMP 33: Inventory Town-owned Parks and Open Spaces, Buildings and Facilities, and Vehicles and Equipment**

An inventory of town-owned parks and open spaces, buildings and facilities, and vehicles and equipment was developed and included in Appendix 6.1 of the Town’s SWMP.

**BMP 34: Infrastructure Operations and Maintenance (O&M) Procedures**

Written infrastructure O&M procedures were developed and included in Appendix 6.1 of the Town’s SWMP.

**BMP 35: Catch Basin Cleaning Program**

The current schedule for catch basin cleaning is to clean approximately half of the catch basins each year. Data collected from catch basin cleaning efforts are being used to identify catch basins that are more than 50% full for increased cleaning; however, progress on the development of the catch basin cleaning optimization program has been delayed due to staff/budget cuts as a result of the COVID-19 pandemic. During Permit Year 2, catch basin cleaning was conducted August 7, 2019 to August 14, 2019, October 22 to October 24, 2019, and May 4 to May 13, 2020. Catch basin cleanings are stored at the Town sand pit to mix with compost and do not discharge to receiving waters. The following is a summary of catch basin cleaning completed during Permit Year 2:

<b>Permit Year 2 Catch Basin Cleaning Summary</b>	<b>2019</b>	<b>2020</b>
Total Town Maintained Catch Basins	1,732	1,732
Catch Basins Cleaned	455	444
Catch Basin Inspected	455	444
Total Sediment Removed (ft <sup>3</sup> )	2,455	4,171

**BMP 36: Street Sweeping Program**

The Town of Exeter sweeps streets and municipally-owned parking lots several times per year. Sweeping occurs three to four days per week between April and October. During Permit Year 2, 917 lane-miles were swept and 1,080 cubic yards of material were removed. Street sweepings are stored at the Town sand pit to mix with compost and do not discharge to receiving waters.

**BMP 37: Winter Road Maintenance Program**

The Town of Exeter follows the guidance of the Green SnoPro certification for optimizing salt spreading operations. A winter road maintenance program has been established with a goal of reducing salt usage and included in Appendix 6.1 of the Town’s SWMP.

**BMP 38: Stormwater Treatment Structures Inspection and Maintenance Procedures**

Town operated treatment units are inspected and maintained annually. During Permit Year 2, water quality units were not cleaned as a result of a new contractor along with budget constraints due to COVID-19; however, the rain garden at the Founder’s Park was cleaned in the spring of 2020 and the Lincoln Street infiltration trench and media box filters were still under warranty and maintained by the construction contractor that installed them. Water quality units are scheduled to be cleaned in 2021. An inventory of municipally-owned or operated structural BMPs and written inspection and maintenance procedures were developed and included in Appendix 6.1 of the Town’s SWMP.

**BMP 39: Stormwater Pollution Prevention Plan (SWPPP)**

The existing Exeter DPW Complex SWPPP was updated in Permit Year 2 to fully incorporate the recent upgrades to the Wastewater Treatment Facility into the DPW Complex SWPPP.

A SWPPP evaluation was prepared for other town-owned facilities within the MS4, including Public Safety Complex and the Recreation Center Maintenance Garage. Based on the evaluation, it was determined that the existing SWPPPs for these two facilities be superseded by the O&M Procedures related to Buildings and Facilities and Vehicles and Equipment. The evaluation was included as Appendix 6.2 of the SWMP. The Town determined the Transfer Station is located outside of the MS4 Urbanized Area.

## **TMDLS AND WATER QUALITY LIMITED WATERS**

### **Bacteria/Pathogens**

Outfalls to these receiving waters will be ranked as high priority for the IDDE implementation when the initial outfall inventory and priority ranking is updated (relevant BMP: 15). For the status of other relevant BMPs in the SWMP that address enhanced BMPs for Bacteria/Pathogens, refer to BMPs 1 and 5.

### **Nitrogen**

Outfalls to these receiving waters will be ranked as high priority for the IDDE implementation when the initial outfall inventory and priority ranking is updated (relevant BMP: 15). For the status of other relevant BMPs in the SWMP that address enhanced BMPs for Nitrogen, refer to BMPs 1, 2, 6, and 36.

The Town of Exeter through its participation in the Seacoast Stormwater Coalition and continued involvement with the NHDES led Pollutant Tracking and Accounting Pilot Project (PTAPP) will satisfy the tracking and accounting requirement of the municipally-owned structural BMPs listed in Attachment 1 to Appendix H. The PTAPP 2019 report is attached to the annual report (see Attachment for TMDL and Water Quality Limited Waters – Nitrogen).

### **Solids, Oil and Grease (Hydrocarbons), or Metals**

Outfalls to these receiving waters will be ranked as high priority for the IDDE implementation when the initial outfall inventory and priority ranking is updated (relevant BMP: 15). For the status of other relevant BMPs in the SWMP that address enhanced BMPs for Solids, Oil and Grease (Hydrocarbons), or Metals, refer to BMPs 35 and 36.

## **DESCRIPTION OF ANY CHANGES IN IDENTIFIED BMPS OR MEASURABLE GOALS**

The Town of Exeter has implemented activities in accordance with the approved NOI. All BMPs and measurable goals as outlined in the approved NOI are appropriate.

It should be noted that the description of BMP 1 was expanded with more detail as included in the annual report (Permit Year 1).

In Permit Year 2, BMP 3 Development Regulations Fact Sheet Brochures/Pamphlets was modified by relying on the Town's checklist in the Planning Board applications for outreach to developers rather than distributing a separate regulations fact sheet to developers.

## **ACTIVITIES FOR THE NEXT REPORTING PERIOD**

The Town of Exeter will continue to implement activities in accordance with the approved NOI and as noted in the Annual Report.



Exeter, NH Public Works

May 30 · 🌐



Looking for a new route to walk your pup this weekend? Maybe choose a route that has one of the handy pet waste stations!

Where ever you choose to walk your pup please do your part and clean-up your dog's waste. Pet waste (including that associated with farm animals) is more than just a nightmare for our shoes. Just like human sewage, untreated pet fecal matter is harmful to waterways. Rain washes pet waste containing excess nitrogen and disease-causing organisms, such as ... [See More](#)



**EVERY DROP**  
Small Changes. Big Difference.

We love our dogs! But dog waste carries harmful bacteria that can make our waters unsafe for drinking or swimming. So always pick it up and throw it in the trash!

**EVERY DROP**  
Small Changes. Big Difference.

Take the Pledge to Scoop the Poop!  
Visit [stateofnorestuaries.org/everydrop/petpledge](http://stateofnorestuaries.org/everydrop/petpledge) or just scan the QR code to let your town know that you're doing your part by scooping the poop!





Many NH towns have over 1,000 dogs living in them, and each dog "goes" once or twice a day. That's a lot of poop! Not only is it gross when it's left around, but it can be dangerous. Harmful bacteria and parasites - such as Giardia or Salmonella - that lives in pet waste, can come in contact with other people and pets or wash into nearby waterways or storm drains. **Picking up our dog's waste and throwing it out is a small change that can make a big difference in keeping our waters clean.**

### 5 Small Changes that Make a Big Difference:

1. Always carry a plastic bag when you walk your dog.
2. Always pick up that poop.
3. Always dispose of it in a trashcan.
4. Never put bagged or unbagged waste in a storm drain.
5. Take the Pledge to tell your town you're making a difference!

You and 4 others

5 Comments



Like



Comment



Share

Most Relevant



Write a comment...



Jen Mates

There are maps of the pet waste station on the Town's website, too. <https://www.exeternh.gov/bcc/think-blue-pet-waste>



EXETERNH.GOV

Think Blue: Pet Waste | Town of Exeter New Hampshire Official...



Like · Reply · Remove Preview · 12w



Willard Urban

And it's not enough to bag the poop. I have found full bags on several trails. CARRY OUT!

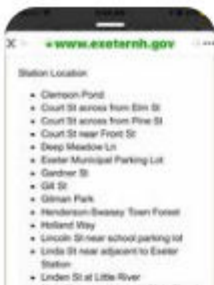


Like · Reply · 12w

↳ 2 Replies



Dana Skreslet Trahan



 **Exeter, NH Public Works** March 4 · 🌐 ⋮

A message from NHDES:  


Our pets can play an important role to be environmentally friendly too! Changing your pets' diet, properly disposing of their waste, and making smart choices with their toys and accessories can make a huge difference!

[NH Department of Environmental Services](#)

---

 MYEMAIL.CONSTANTCONTACT.COM  
**January GREENWorks: Say 'I Do' to Sustainability**


---

 7

---

 Like     Comment     Share

---

 Write a comment...    



Exeter, NH Public Works

April 22 · 🌐



Place your rain barrel order by May 25th for the Exeter discount!

## 2020 Rain Barrel Program

Order Online at

[www.greatamericanrainbarrel.com](http://www.greatamericanrainbarrel.com)

Choose the Exeter NH Community Program



Orders must be placed by  
**May 25th**

We will arrange to drop barrels  
off the first week of June

**Sponsored by the Exeter Conservation Commission  
and the Healthy Lawns Clean Water Committee**

For more info. Contact Kristen Murphy at 418-6452 or email [kmurphy@exeternh.gov](mailto:kmurphy@exeternh.gov)

Exeter NH Conservation Commission

March 18 · 🌐

Need a distraction? Plan for your gardening and purchase a rain barrel today. Due to the need to deliver, this is open to Exeter residents only. Visit:

<https://www.greatamericanrainbarrel.com/community/>

👍 1

2 Shares

👍 Like

💬 Comment

➦ Share



Write a comment...





Exeter, NH Public Works

May 29 · 🌐



Think Blue! 💧

Are you finding yourself focusing on your home improvement projects due to the stay at home order?

We can tell with the increased traffic at the Transfer Station!

If your next focus is your lawn check out these homeowner tips! 🏡

<https://www.exeternh.gov/bcc/think-blue-homeowners>



👍 You and 3 others

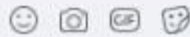
👍 Like

💬 Comment

➦ Share



Write a comment...





Exeter, NH Public Works

May 15 · 🌐



Rain barrels are a great way to conserve water and reduce your water usage. Order one before May 25th for the most convenient way to receive a rain barrel with Exeter's discount.

Rain Water Facts:

- 💧 It takes less than 1/8 inch of rain water to fill a well situated in a 60 gallon rain barrel.
- 💧 Sixty gallons can cover about 100 square feet with 1 inch of water.
- 💧 Water consumption increase between 20 and 200% in the summer months.

Order here:

<https://www.greatamericanrainbarrel.com/community/>

#waterconservation

#rainwater



GREATAMERICANRAINBARREL.COM

home - The Great American Rain Barrel

Reuse, Repurpose, Recycle. When it Rains, You Save.

👍 6

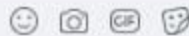
👍 Like

💬 Comment

➦ Share



Write a comment...





Exeter NH Conservation Commission

June 12 · 🌐

...

Want to learn how to care for your lawn without impacting the environment? Register today!  
[Exeter, NH Public Works](#)

## "GREEN GRASS, CLEAR WATER" WEBINAR

**June 15, 2020 6:30PM**



Many of us enjoy the time we spend working on our lawns and are willing to try new practices as long as our lawns continue to look nice. Watch to learn how you can grow and maintain a beautiful lawn that also helps protect our valuable water resources. Hear about grass seed choices, and fertilizer, watering and mowing tips to keep your yard beautiful, healthy, and safer for our environment.

Julia Peterson, Coastal Water Resources Specialist at the University of NH will present this informative and helpful information, and will be available to answer your questions.

**Please click [HERE](#) to register for this important and informative online presentation.  
 Registration is free, but is required.**

This project is funded, in part, by NOAA's Office of Coastal Management under the Coastal Zone Management Act in conjunction with the New Hampshire Department of Environmental Services Coastal Program



Seabrook-Hamptons Estuary Alliance

June 11 · 🌐



Exeter, NH Public Works

September 17 · 🌐



Septic Smart Week is 9/16/19 through 9/20/19. Over the next few days we'll have tips for residents to be "septic smart" and to help keep waterways clean!



👍 4

1 Comment 2 Shares

👍 Like

💬 Comment

➦ Share



**Exeter, NH Public Works**

September 17 · 🌐



Think at the sink! Septic Smart tip #2

<https://www.epa.gov/septic/septicsmart-week>

# Think at the Sink!



What goes down your drain has a big impact on your septic system. Avoid harsh chemicals and use cleaners/ detergents in moderation. Learn more at [www.epa.gov/septic](http://www.epa.gov/septic).



👍 3

👍 Like

💬 Comment

➦ Share





Exeter, NH Public Works

September 18 · 🌐



Don't strain your drain! Use water efficiently by spacing out your dishwasher and laundry loads!

# Don't Strain Your Drain!



Use water efficiently and stagger use of water-based appliances (such as a washing machine) to avoid a back up of your septic system into your house. Learn more at [www.epa.gov/septic](http://www.epa.gov/septic).



👍 4

👍 Like

💬 Comment

➦ Share



**Exeter, NH Public Works**

September 19 · 🌐



Keep your well water clean! If you have a well, you should have your well water tested regularly.

A list of accredited lab testing services can be found here:

<http://des.nh.gov/.../dwgb/n.../documents/labs-private-wells.pdf>

# Keep it Clean!



If you have a well, many things can contaminate your drinking water, such as a failing septic system. Test your well water regularly! Learn more at [www.epa.gov/septic](http://www.epa.gov/septic).



👍 1

👍 Like

💬 Comment

➦ Share



Exeter, NH Public Works

September 20 · 🌐



Final Septic Smart week tip... Shield your field!  
That's a wrap for Septic Smart week, but that shouldn't stop you from learning more!  
[www.epa.gov/septic](http://www.epa.gov/septic)

**Shield Your Field!**

www.epa.gov/septic

Drain Field  
Please  
Stay Off

Tree and shrub roots, cars, and livestock can damage your drainfield. Learn more at [www.epa.gov/septic](http://www.epa.gov/septic).

👍 3

2 Comments 1 Share

👍 Like

💬 Comment

➦ Share



**Exeter, NH Public Works**

September 24 · 🌐



#TipTuesday 🗣️: Human waste & toilet paper 🧻 are the ONLY flushable items. Whether you're on private septic or public sewer service!

None of the following items are flushable:

- ❌ flushable wipes
- ❌ wipes of any kind (make-up wipes, baby wipes, etc.)
- ❌ facial tissues
- ❌ paper towels
- ❌ dental floss
- ❌ toys
- ❌ feminine products
- ❌ cotton swabs
- ❌ cigarettes
- ❌ diapers
- ❌ toys (regardless of what your toddler might think)

Don't let misleading packaging fool you... disposable items and items that state "flushable" on the package are not flushable! These items can cause clogs in your home and public sewer systems resulting in costly repairs!

#getpumpednh #educateothers

<https://getpumpednh.com/.../uploa.../2018/10/whats-flushable.pdf>





Exeter, NH Public Works shared a post.

November 27 · 🌐

Great reminder for our Thanksgiving chefs! 🍽️

Fat, oil, and grease (FOG) cannot be disposed of down the drain. Once the water containing any FOG cools it solidifies and causes clogging in your pipes.

Thank you NH Department of Environmental Services!



119 Views

NH Department of Environmental Services

November 27 · 🌐

Who would think that the recipes you choose for Thanksgiving could cause a problem (other than the heartburn you get from Aunt Martha's green bean casserole)? B...

See More



2

1 Share

👍 Like

💬 Comment

➦ Share



**Exeter, NH Public Works** shared an event.



October 18 at 12:59 PM · 🌐

Reminder: Tomorrow is Household Hazardous Waste Day!  
Do you have any questions regarding what is or isn't accepted? Let us know below or email [publicworks@exeternh.gov](mailto:publicworks@exeternh.gov)!



SAT, OCT 19

### Household Hazardous Waste Collection Day

Exeter, NH Public Works · Exeter

★ Interested

🌐 You like Town of Stratham

👍 1

1 Comment

👍 Like

💬 Comment



**Exeter, NH Public Works**

October 8 · 🌐

**Important dates !!**

Starting Oct 15th through Dec 15th the Transfer Station hours will be extended for fall clean-up:

Tuesday 9:00 am - 1:00 pm

Friday 9:00 am - 2:30 pm

Saturday 8:00 am - 2:30 pm

Sunday Noon - 4:00 pm

\*Please check the Transfer Station page for disposal information.

Household Hazardous Waste ☢️ Day will be Saturday, October 19, 2019 at the Public Works Complex 8am-1pm.

Leaf 🍂 pick-up will be during the week of Thanksgiving (Nov 25th) on your regular pick-up day unless your day is Thursday or Friday. Thursday's pick-up will be on Friday, and Friday's will be Saturday.

The next holiday observed by Waste Management ♻️ will be Thanksgiving. If your normal day is Thursday or Friday pick-up will be delayed 1 day due to the holiday.

Please let us know if you have any questions!

[publicworks@exeternh.gov](mailto:publicworks@exeternh.gov)

[www.exeternh.gov/publicworks](http://www.exeternh.gov/publicworks)





**Exeter, NH Public Works**



November 5 at 9:13 AM · 🌐

Reminder! 🍁🍁🍁🍁

Curbside fall leaf pick-up will be during the week of November 25th on your regular pick-up day unless your day is Thursday or Friday. Thursday's pick-up will be on Friday, and Friday's will be on Saturday.

Waste Management picks-up leaves curbside twice each year (1 spring and 1 fall date). Bags must be biodegradable paper leaf bags and placed curbside by 7 a.m. on your pick-up day (12 bag limit per residence). Bags are available to purchase at local hardware or grocery stores. In addition, leaves can be taken directly to the Transfer Station (no permit required) during hours of operation.

Leaves brought to the Transfer Station or collected curbside are composted. Compost is available to residents free of charge!

<https://www.exeternh.gov/publicworks/fall-leaf-pick-0>







Exeter, NH Public Works shared a post.



December 27 at 2:59 PM · 🌐

Christmas tree pick up will be during the week of January 6th on your regular pick-up day or you can bring them to Memories for their goats!

Either way please remove all tinsel, ornaments, and lights! 🌲 🌲



### Memories Ice Cream

Ice Cream Shop

Send Message

#### Memories Ice Cream

December 27 at 9:56 AM · 🌐

Like Page

8

1 Comment 4 Shares

Like

Comment

Share



Exeter, NH Public Works

January 6 · 🌐



Don't forget to have your tree out by 7am on your regular pick-up day this week!

Trees are also accepted at the Transfer Station, proof of residency is required or contact your local farm to see if they will accept it as a special treat for their goats! 😊

<https://www.exeternh.gov/publicworks/christmas-tree-pick>



Exeter, NH Public Works  
Government Organization

Send Message

9

1 Comment 4 Shares

Like

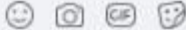
Comment

Share

Most Relevant ▾



Write a comment...



Paul Royal

Nothing says "Christmas is over," quite like the mobile wood chipper. Thanks for this service.

Like · Reply · 33w

1



Exeter, NH Public Works

March 19 · 🌐



Spring leaf pick-up will be April 27th - May 1st on your regular pick-up day!

Please have your leaves curbside by 7am on your regular pick-up day during the week of April 27th.



Waste Management picks-up leaves curbside twice each year (1 spring and 1 fall date). Bags must be biodegradable paper leaf bags and placed curbside by 7 a.m. on your pick-up day (12 bag limit per residence). Bags are available to purchase at local hardware or grocery stores. In addition, leav... [See More](#)



👍 5

1 Comment 2 Shares



**Exeter, NH Public Works**

April 8 · 🌐



Reminder: Spring leaf pick-up will be April 27th - May 1st on your regular pick-up day!

Please have your leaves curbside by 7am on your regular pick-up day during the week of April 27th.



Waste Management picks-up leaves curbside twice each year (1 spring and 1 fall date). Bags must be biodegradable paper leaf bags and placed curbside by 7 a.m. on your pick-up day (12 bag limit per residence). Bags are available to purchase at local hardware or grocery stores. In addition, leaves can be taken directly to the Transfer Station (no permit required) during hours of operation.

Leaves brought to the Transfer Station or collected curbside are composted. Compost is available to residents free of charge.

<https://www.exeternh.gov/publicworks/spring-leaf-pick-2>



EXETERNH.GOV

**Spring Leaf Pick-up | Town of Exeter New Hampshire Official Website**

Waste Management picks-up leaves curbside twice each year (1 spring and 1 fall date). Bags must be biodegradable paper leaf bags and...

👍 2

1 Comment 5 Shares

👍 Like

💬 Comment

➦ Share

Most Relevant ▾



Write a comment...



**Elizabeth Charity Barber**

In raking up my leaves, I got a few pine cones and needles - can they be added to the bags as well?

Like · Reply · 20w



Exeter, NH Public Works

April 22 · 🌐



Reminder: Spring leaf pick-up is next week on your regular pick-up day!

Please have your leaves curbside by 7am on your regular pick-up day during the week of April 27th.



Waste Management picks-up leaves curbside twice each year (1 spring and 1 fall date). Bags must be biodegradable paper leaf bags and placed curbside by 7 a.m. on your pick-up day (12 bag limit per residence). Bags are available to purchase at local hardware or grocery stores. In addition, leaves can be taken directly to the Transfer Station (no permit required) during hours of operation.

Leaves brought to the Transfer Station or collected curbside are composted. Compost is available to residents free of charge.

<https://www.exeternh.gov/publicworks/spring-leaf-pick-2>



EXETERNH.GOV

### Spring Leaf Pick-up | Town of Exeter New Hampshire Official Website

Waste Management picks-up leaves curbside twice each year (1 spring and 1 fall date). Bags must be biodegradable paper leaf bags and...



👍 2

4 Comments 4 Shares

👍 Like

💬 Comment

➦ Share

## Learn about water!

The Exeter Water Trail is an educational installation on the campuses of the Main Street and Lincoln Street Elementary Schools. The Trail consists of a series of five signs located at various landscape features that illustrate concepts relating to water. Topics such as stormwater runoff, water quality, flooding, watersheds and the water cycle are displayed in brightly colored graphic images and narrative explanations.



**Water is everywhere – above ground and below ground!**

## Water Trail Activity Sheet

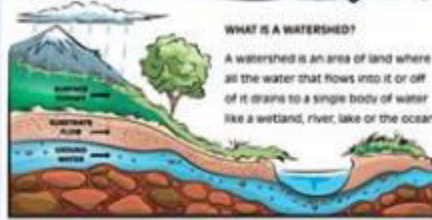
Use the interactive Water Trail Activity Sheet to discover answers to these questions:



What is the water cycle?

What is a watershed?

Why are wetlands important?



WHAT IS A WATERSHED?

A watershed is an area of land where all the water that flows into it or off of it drains to a single body of water like a wetland, river, lake or the ocean.

What is stormwater?

AUG

13

## Exeter Water Trail Tour

Public - Hosted by Rockingham Planning Commission and Exeter NH Conservation Commission

★ Interested

✓ Going

...

🕒 Tuesday, August 13, 2019 at 5 PM – 6:30 PM  
about 4 weeks ago

📍 Begin from Main Street Elementary School playground

About

Discussion

### Details

You're invited to join the Exeter Conservation Commission and the Rockingham Planning Commission on a tour of the Exeter Water Trail, Tuesday August 13th from 5:00-6:30pm. Tours on the hour and half hour. Stop by to learn more about water!

Kid Friendly

Sign Up

Join or Log Into Facebook

Events

Events



**FEB 8** 2020 Full Moon Snowshoe

Public · Hosted by **Exeter NH Conservation Commission** and **Exeter Parks and Recreation**

🕒 Saturday, February 8, 2020 at 6:30 PM – 9:30 PM EST  
about 7 months ago

📍 Exeter NH Conservation Commission

**15 Went · 303 Interested**  
Share this event with your friends

Details

The Exeter Conservation Commission and Parks and Recreation invite you to our 2020 Full Moon Snowshoe Hike on Saturday, February 8th at 6:30 pm.

We will meet at the Exeter Country Club parking lot for a family-friendly guided walk to the Irvine Conservation Land, followed by hot cocoa. \*Note: This event will occur with or without snow.

To help us plan for cocoa, please reserve your free ticket through the link below. For more information, contact Kristen Murphy at [kmurphy@exeternh.gov](mailto:kmurphy@exeternh.gov)

Wellness Kid Friendly

Hosted by



Exeter NH Conservation Commission



Exeter Parks and Recreation

About the Venue



English (US) · Español · Português (Brasil) · Français (France) · Deutsch

Privacy · Terms · Advertising · Ad Choices · Cookies · More

Facebook © 2020

BMP	Post Message	Posted	Lifetime Post Total Reach	Permalink
<b>Public Works FB Page</b>				
7	Mark your calendar for August 13th at 5PM (meet at Main St Elementary). You'll have the chance to tour the newly installed Water Trail!	8/8/19 11:48 AM	321	<a href="https://www.facebook.com/ExeterNHPublicWorks/posts/1862670700546487">https://www.facebook.com/ExeterNHPublicWorks/posts/1862670700546487</a>
Add'l Pub. Partic.	Household Hazardous Waste Day October 19th 2019 8:00 am - 1:00 pm Exeter Public Works Complex 13 Newfields Rd - Exeter ** Please note during this event Newfields Road will remain one way inbound from 101 (exit 10). Once a year Rockingham Planning hosts a Hazardous Waste Day at the Public Works Department. This provides an opportunity for residents to dispose of any of the hazardous waste they have accumulated over the year. A \$10 donation per household to help offset costs is appreciated. There is a 10 gallon or equivalent limit. <a href="https://www.exeternh.gov/publicworks/household-hazardous-waste-day">https://www.exeternh.gov/publicworks/household-hazardous-waste-day</a>	9/6/19 10:50 AM	823	<a href="https://www.facebook.com/ExeterNHPublicWorks/posts/1890589284421295">https://www.facebook.com/ExeterNHPublicWorks/posts/1890589284421295</a>
Add'l Pub. Partic.	Let's talk about PAINT! ☹️ One of the common misconceptions about paint is that it is all hazardous, but latex paint is NOT accepted at Household Hazardous Waste Day (HHW). HHW day will be: Saturday, Oct 19th 8am-1pm here at Public Works. Before disposing of latex/water-based paint in your household trash these paints must be solid and dry. 1) If the container is nearly full, you may need to pour some of the paint into an empty container to make room for absorbent material. 2) Pour kitty-litter, speedy-dry or some other absorbent material (not sand or dirt) into the paint container. 3) Mix the absorbent material into the paint. 4) Keep the lid off and allow the paint to dry & solidify. This may take several days. If you are pressed for time, there are chemicals that can be purchased at your local hardware store that will dry the paint in a matter of hours. 5) Once the paint is completely solid dispose of it in your trash/blue bags. Be sure to not exceed the weight limit printed on the bag. OIL BASED PAINT: Oil-based paint (wet or dry) is hazardous is accepted at the annual Household Hazardous Waste Collection Day (Oct 19th). Other disposal questions can be answered by our "How to dispose of list" on our Transfer Station page or refer to the HHW day flyer! <a href="https://www.exeternh.gov/publicworks/household-hazardous-waste-day">https://www.exeternh.gov/publicworks/household-hazardous-waste-day</a> <a href="https://www.exeternh.gov/publicworks/transfer-station">https://www.exeternh.gov/publicworks/transfer-station</a>	9/13/19 7:47 AM	556	<a href="https://www.facebook.com/ExeterNHPublicWorks/posts/1897541083726115">https://www.facebook.com/ExeterNHPublicWorks/posts/1897541083726115</a>
5	Septic Smart Week is 9/16/19 through 9/20/19. Over the next few days we'll have tips for residents to be "septic smart" and to help keep waterways clean!	9/17/19 12:05 PM	847	<a href="https://www.facebook.com/ExeterNHPublicWorks/posts/1901915419955348">https://www.facebook.com/ExeterNHPublicWorks/posts/1901915419955348</a>
5	Think at the sink! Septic Smart tip #2 <a href="https://www.epa.gov/septic/septic-smart-week">https://www.epa.gov/septic/septic-smart-week</a>	9/17/19 12:12 PM	346	<a href="https://www.facebook.com/ExeterNHPublicWorks/posts/1901920693288154">https://www.facebook.com/ExeterNHPublicWorks/posts/1901920693288154</a>
5	Don't strain your drain! Use water efficiently by spacing out your dishwasher and laundry loads!	9/18/19 6:39 AM	389	<a href="https://www.facebook.com/ExeterNHPublicWorks/posts/1902683199878570">https://www.facebook.com/ExeterNHPublicWorks/posts/1902683199878570</a>
5	Keep your well water clean! If you have a well, you should have your well water tested regularly. A list of accredited lab testing services can be found here: <a href="http://des.nh.gov/organization/divisions/water/dwgb/nhelap/documents/labs-private-wells.pdf">http://des.nh.gov/organization/divisions/water/dwgb/nhelap/documents/labs-private-wells.pdf</a>	9/19/19 5:55 AM	298	<a href="https://www.facebook.com/ExeterNHPublicWorks/posts/1903714373108786">https://www.facebook.com/ExeterNHPublicWorks/posts/1903714373108786</a>
5	Final Septic Smart week tip... Shield your field! That's a wrap for Septic Smart week, but that shouldn't stop you from learning more! <a href="http://www.epa.gov/septic">www.epa.gov/septic</a>	9/20/19 5:41 AM	531	<a href="https://www.facebook.com/ExeterNHPublicWorks/posts/1904767499670140">https://www.facebook.com/ExeterNHPublicWorks/posts/1904767499670140</a>
5	#TipTuesday 🗑️: Human waste & toilet paper 🧻 are the ONLY flushable items. Whether you're on private septic or public sewer service! None of the following items are flushable: <input checked="" type="checkbox"/> flushable wipes <input checked="" type="checkbox"/> wipes of any kind (make-up wipes, baby wipes, etc.) <input checked="" type="checkbox"/> facial tissues <input checked="" type="checkbox"/> paper towels <input checked="" type="checkbox"/> dental floss <input checked="" type="checkbox"/> toys <input checked="" type="checkbox"/> feminine products <input checked="" type="checkbox"/> cotton swabs <input checked="" type="checkbox"/> cigarettes <input checked="" type="checkbox"/> diapers <input checked="" type="checkbox"/> toys (regardless of what your toddler might think) Don't let misleading packaging fool you... disposable items and items that state "flushable" on the package are not flushable! These items can cause clogs in your home and public sewer systems resulting in costly repairs! #getpumpednh #educateothers <a href="https://getpumpednh.com/wp-content/uploads/2018/10/whats-flushable.pdf">https://getpumpednh.com/wp-content/uploads/2018/10/whats-flushable.pdf</a>	9/24/19 5:59 AM	1675	<a href="https://www.facebook.com/ExeterNHPublicWorks/posts/1909007419246148">https://www.facebook.com/ExeterNHPublicWorks/posts/1909007419246148</a>
11	Great Bay NWR Shoreline Clean-up	9/24/19 7:30 AM	177	<a href="https://www.facebook.com/ExeterNHPublicWorks/posts/1909092179237672">https://www.facebook.com/ExeterNHPublicWorks/posts/1909092179237672</a>
6	The leaves are changing! For those that are curious... Fall leaf pick-up will be during the week of November 25th on your regular pick-up day unless your day is Thursday or Friday. Thursday's pick-up will be on Friday, and Friday's will be on Saturday due to the holiday. <a href="https://www.exeternh.gov/publicworks/fall-leaf-pick-0">https://www.exeternh.gov/publicworks/fall-leaf-pick-0</a>	9/27/19 10:18 AM	395	<a href="https://www.facebook.com/ExeterNHPublicWorks/posts/1912516628895227">https://www.facebook.com/ExeterNHPublicWorks/posts/1912516628895227</a>
Pub. Partic.	Mark your calendar for Household Hazardous Waste Day October 19, 2019 8am - 1pm at the Public Works Complex	9/30/19 12:12 PM	322	<a href="https://www.facebook.com/ExeterNHPublicWorks/posts/1915848468562043">https://www.facebook.com/ExeterNHPublicWorks/posts/1915848468562043</a>



BMP	Post Message	Posted	Lifetime Post Total Reach	Permalink
6	Important dates! Starting Oct 15th through Dec 15th the Transfer Station hours will be extended for fall clean-up: Tuesday 9:00 am - 1:00 pm Friday 9:00 am - 2:30 pm Saturday 8:00 am - 2:30 pm Sunday Noon - 4:00 pm *Please check the Transfer Station page for disposal information. Household Hazardous Waste ☹️ Day will be Saturday, October 19, 2019 at the Public Works Complex 8am-1pm. Leaf 🍁 pick-up will be during the week of Thanksgiving (Nov 25th) on your regular pick-up day unless your day is Thursday or Friday. Thursday's pick-up will be on Friday, and Friday's will be Saturday. The next holiday observed by Waste Management 🗑️ 🗑️ will be Thanksgiving. If your normal day is Thursday or Friday pick-up will be delayed 1 day due to the holiday. Please let us know if you have any questions! publicworks@exeternh.gov www.exeternh.gov/publicworks	10/8/19 7:25 AM	1185	<a href="https://www.facebook.com/ExeterNHPublicWorks/posts/1924659707680919">https://www.facebook.com/ExeterNHPublicWorks/posts/1924659707680919</a>
6	Starting this week (until Dec 15th) the Transfer Station hours are extended for fall clean-up.	10/15/19 4:42 AM	480	<a href="https://www.facebook.com/ExeterNHPublicWorks/posts/1932613223552234">https://www.facebook.com/ExeterNHPublicWorks/posts/1932613223552234</a>
Pub. Partic.	Reminder: Tomorrow is Household Hazardous Waste Day! Do you have any questions regarding what is or isn't accepted? Let us know below or email publicworks@exeternh.gov!	10/18/19 9:59 AM	206	<a href="https://www.facebook.com/ExeterNHPublicWorks/posts/1936657293147827">https://www.facebook.com/ExeterNHPublicWorks/posts/1936657293147827</a>
6	Reminder! 🍁🍁🍁 Curbside fall leaf pick-up will be during the week of November 25th on your regular pick-up day unless your day is Thursday or Friday. Thursday's pick-up will be on Friday, and Friday's will be on Saturday. Waste Management picks-up leaves curbside twice each year (1 spring and 1 fall date). Bags must be biodegradable paper leaf bags and placed curbside by 7 a.m. on your pick-up day (12 bag limit per residence). Bags are available to purchase at local hardware or grocery stores. In addition, leaves can be taken directly to the Transfer Station (no permit required) during hours of operation. Leaves brought to the Transfer Station or collected curbside are composted. Compost is available to residents free of charge! <a href="https://www.exeternh.gov/publicworks/fall-leaf-pick-0">https://www.exeternh.gov/publicworks/fall-leaf-pick-0</a>	11/5/19 6:13 AM	569	<a href="https://www.facebook.com/ExeterNHPublicWorks/posts/1959008757579347">https://www.facebook.com/ExeterNHPublicWorks/posts/1959008757579347</a>
6	2020 Transfer Station Permits are now available to purchase! <a href="https://www.exeternh.gov/publicworks/transfer-station">https://www.exeternh.gov/publicworks/transfer-station</a>	11/5/19 9:16 AM	346	<a href="https://www.facebook.com/ExeterNHPublicWorks/posts/1959196380893918">https://www.facebook.com/ExeterNHPublicWorks/posts/1959196380893918</a>
6	Reminder!! 🍁🍁🍁 Fall leaf pick-up will be during the week of Thanksgiving on your regular pick-up day unless your pick-up day is Thursday or Friday. Thursday's pick-up will be Friday Friday's pick-up will be Saturday <a href="https://www.exeternh.gov/publicworks/fall-leaf-pick-0">https://www.exeternh.gov/publicworks/fall-leaf-pick-0</a>	11/19/19 7:45 AM	1867	<a href="https://www.facebook.com/ExeterNHPublicWorks/posts/1976792989134257">https://www.facebook.com/ExeterNHPublicWorks/posts/1976792989134257</a>
6	Reminder!! 🍁🍁🍁 Fall leaf pick-up will be during the week of Thanksgiving on your regular pick-up day unless your pick-up day is Thursday or Friday. Thursday's pick-up will be Friday Friday's pick-up will be Saturday <a href="https://www.exeternh.gov/publicworks/fall-leaf-pick-0">https://www.exeternh.gov/publicworks/fall-leaf-pick-0</a>	11/24/19 6:32 AM	270	<a href="https://www.facebook.com/ExeterNHPublicWorks/posts/1982993128514243">https://www.facebook.com/ExeterNHPublicWorks/posts/1982993128514243</a>
5	Great reminder for our Thanksgiving chefs! 🍴 Fat, oil, and grease (FOG) cannot be disposed of down the drain. Once the water containing any FOG cools it solidifies and causes clogging in your pipes. Thank you NH Department of Environmental Services!	11/27/19 6:10 AM	171	<a href="https://www.facebook.com/ExeterNHPublicWorks/posts/1986598771487012">https://www.facebook.com/ExeterNHPublicWorks/posts/1986598771487012</a>
6	Update 11/27/19: Trash collection today (Wednesday) will occur, but pick-up time may be later than usual due to leaf pick-up and a possible truck break down (not yet confirmed). If your trash is not picked up by 7pm this evening, please bring it back in and notify Waste Management 800-847-5303. <a href="https://www.exeternh.gov/publicworks/curbside-collection">https://www.exeternh.gov/publicworks/curbside-collection</a>	11/27/19 12:52 PM	344	<a href="https://www.facebook.com/ExeterNHPublicWorks/posts/1986971204783102">https://www.facebook.com/ExeterNHPublicWorks/posts/1986971204783102</a>
6	Christmas tree pick up will be during the week of January 6th on your regular pick-up day or you can bring them to Memories for their goats! Either way please remove all tinsel, ornaments, and lights! 🎄🎄	12/27/19 11:59 AM	583	<a href="https://www.facebook.com/ExeterNHPublicWorks/posts/2024712777675611">https://www.facebook.com/ExeterNHPublicWorks/posts/2024712777675611</a>
6	Don't forget to have your tree out by 7am on your regular pick-up day this week! Trees are also accepted at the Transfer Station, proof of residency is required or contact your local farm to see if they will accept it as a special treat for their goats! 😊 <a href="https://www.exeternh.gov/publicworks/christmas-tree-pick">https://www.exeternh.gov/publicworks/christmas-tree-pick</a>	1/6/20 6:19 AM	764	<a href="https://www.facebook.com/ExeterNHPublicWorks/posts/2037716799708542">https://www.facebook.com/ExeterNHPublicWorks/posts/2037716799708542</a>
5	Interested in learning more about the new Wastewater Treatment Plant? We highly encourage watching this to learn more about Exeter's largest capital improvement project! With stunning aerial views displaying the immense scale of the entire operation. <a href="https://youtu.be/rBNOKJ1UkRI">https://youtu.be/rBNOKJ1UkRI</a>	1/17/20 4:21 AM	906	<a href="https://www.facebook.com/ExeterNHPublicWorks/posts/2051654654981423">https://www.facebook.com/ExeterNHPublicWorks/posts/2051654654981423</a>
7	Let your voice be heard! Public Input Session for CCMP   Piscataqua Regional Estuaries Partnership	2/7/20 12:27 PM	275	<a href="https://www.facebook.com/ExeterNHPublicWorks/posts/2074838465996375">https://www.facebook.com/ExeterNHPublicWorks/posts/2074838465996375</a>

BMP	Post Message	Posted	Lifetime Post Total Reach	Permalink
1	A message from NHDES: 🐾🐾🐾 Our pets can play an important role to be environmentally friendly too! Changing your pets' diet, properly disposing of their waste, and making smart choices with their toys and accessories can make a huge difference! NH Department of Environmental Services	3/4/20 5:43 AM	349	<a href="https://www.facebook.com/ExeterNHPublicWorks/posts/2102441113236110">https://www.facebook.com/ExeterNHPublicWorks/posts/2102441113236110</a>
5	Reminder: Even if you run out of toilet paper during this crazy toilet paper shortage... Only 2 things can be flushed down your toilet: 🧻 toilet paper 🧻 bodily functions Stay healthy! 🧻	3/13/20 3:07 PM	464	<a href="https://www.facebook.com/ExeterNHPublicWorks/posts/2112226355590919">https://www.facebook.com/ExeterNHPublicWorks/posts/2112226355590919</a>
6	Spring leaf pick-up will be April 27th - May 1st on your regular pick-up day! Please have your leaves curbside by 7am on your regular pick-up day during the week of April 27th. 🍃🍃🍃 Waste Management picks-up leaves curbside twice each year (1 spring and 1 fall date). Bags must be biodegradable paper leaf bags and placed curbside by 7 a.m. on your pick-up day (12 bag limit per residence). Bags are available to purchase at local hardware or grocery stores. In addition, leaves can be taken directly to the Transfer Station (no permit required) during hours of operation. Leaves brought to the Transfer Station or collected curbside are composted. Compost is available to residents free of charge. <a href="https://www.exeternh.gov/publicworks/spring-leaf-pick-2">https://www.exeternh.gov/publicworks/spring-leaf-pick-2</a>	3/19/20 9:23 AM	444	<a href="https://www.facebook.com/ExeterNHPublicWorks/posts/2118627588284129">https://www.facebook.com/ExeterNHPublicWorks/posts/2118627588284129</a>
5	Flushable wipes are not flushable regardless of what is printed on the packaging! This photo is a small scale pump clogged by "flushable wipes" and other items that do not belong in sewer systems. The only flushable items are bodily functions and toilet paper. That's it! <a href="https://www.unionleader.com/news/health/coronavirus/hoping-to-avoid-clogs-nh-sewer-plants-issue-warning-about/article_5f1163ec-3fff-5455-9d1d-271172a7d95e.html">https://www.unionleader.com/news/health/coronavirus/hoping-to-avoid-clogs-nh-sewer-plants-issue-warning-about/article_5f1163ec-3fff-5455-9d1d-271172a7d95e.html</a>	3/23/20 8:37 AM	2088	<a href="https://www.facebook.com/ExeterNHPublicWorks/posts/2123289347817953">https://www.facebook.com/ExeterNHPublicWorks/posts/2123289347817953</a>
36	Tuesday & Wednesday morning this week the Highway crew will be clearing the sand and loose debris from the sidewalks downtown. This will begin at 6am on both days!	4/6/20 1:43 PM	444	<a href="https://www.facebook.com/ExeterNHPublicWorks/posts/2139906206156267">https://www.facebook.com/ExeterNHPublicWorks/posts/2139906206156267</a>
6	Reminder: Spring leaf pick-up will be April 27th - May 1st on your regular pick-up day! Please have your leaves curbside by 7am on your regular pick-up day during the week of April 27th. 🍃🍃🍃 Waste Management picks-up leaves curbside twice each year (1 spring and 1 fall date). Bags must be biodegradable paper leaf bags and placed curbside by 7 a.m. on your pick-up day (12 bag limit per residence). Bags are available to purchase at local hardware or grocery stores. In addition, leaves can be taken directly to the Transfer Station (no permit required) during hours of operation. Leaves brought to the Transfer Station or collected curbside are composted. Compost is available to residents free of charge. <a href="https://www.exeternh.gov/publicworks/spring-leaf-pick-2">https://www.exeternh.gov/publicworks/spring-leaf-pick-2</a>	4/8/20 10:00 AM	393	<a href="https://www.facebook.com/ExeterNHPublicWorks/posts/2141851552628399">https://www.facebook.com/ExeterNHPublicWorks/posts/2141851552628399</a>
7	How will you celebrate Earth Day today? The Town would like to wish everyone a Happy and Healthy Earth Day! 🌍 While we're at home reflecting on this special day, why not check out the Exeter TV documentary about the Great Dam removal and the return of fish in downtown Exeter. As we speak, the fish are preparing to make the journey from the Gulf of Maine to the fresh water of the Exeter River. 🐟 We truly live in a beautiful town full of wondrous nature!	4/22/20 7:31 AM	270	<a href="https://www.facebook.com/ExeterNHPublicWorks/posts/2158007691012785">https://www.facebook.com/ExeterNHPublicWorks/posts/2158007691012785</a>
2	Place your rain barrel order by May 25th for the Exeter discount!	4/22/20 7:33 AM	355	<a href="https://www.facebook.com/ExeterNHPublicWorks/posts/2158008704346017">https://www.facebook.com/ExeterNHPublicWorks/posts/2158008704346017</a>
6	Reminder: Spring leaf pick-up is next week on your regular pick-up day! Please have your leaves curbside by 7am on your regular pick-up day during the week of April 27th. 🍃🍃🍃 Waste Management picks-up leaves curbside twice each year (1 spring and 1 fall date). Bags must be biodegradable paper leaf bags and placed curbside by 7 a.m. on your pick-up day (12 bag limit per residence). Bags are available to purchase at local hardware or grocery stores. In addition, leaves can be taken directly to the Transfer Station (no permit required) during hours of operation. Leaves brought to the Transfer Station or collected curbside are composted. Compost is available to residents free of charge. <a href="https://www.exeternh.gov/publicworks/spring-leaf-pick-2">https://www.exeternh.gov/publicworks/spring-leaf-pick-2</a>	4/22/20 7:34 AM	404	<a href="https://www.facebook.com/ExeterNHPublicWorks/posts/2158009454345942">https://www.facebook.com/ExeterNHPublicWorks/posts/2158009454345942</a>
5	Home Improvement Project Idea 🏠🧰🔧 Perform a water usage audit to see where you can reduce your water usage! NH Department of Environmental Services has a great outline to assist you in performing this task! Need a copy of your Water Sewer Bill? Email <a href="mailto:watersewerbilling@exeternh.gov">watersewerbilling@exeternh.gov</a> for assistance! <a href="https://www.des.nh.gov/organization/commissioner/pip/factsheets/dwgb/documents/dwgb-26-25.pdf">https://www.des.nh.gov/organization/commissioner/pip/factsheets/dwgb/documents/dwgb-26-25.pdf</a>	4/28/20 5:44 AM	457	<a href="https://www.facebook.com/ExeterNHPublicWorks/posts/2164793960334158">https://www.facebook.com/ExeterNHPublicWorks/posts/2164793960334158</a>
5	Need some more projects to do at home? How about replacing your bathroom fixtures with water sense certified fixtures! Install water-efficient bathroom faucets that use no more than 1.5 gallons per minute or instead, for only a couple of dollars, install low-flow faucet aerators. These devices are readily available at most hardware and building supply stores. Check out more facts on NHDES. <a href="https://www.des.nh.gov/organization/commissioner/pip/factsheets/dwgb/documents/dwgb-26-18.pdf">https://www.des.nh.gov/organization/commissioner/pip/factsheets/dwgb/documents/dwgb-26-18.pdf</a>	4/29/20 11:34 AM	387	<a href="https://www.facebook.com/ExeterNHPublicWorks/posts/2166217660191788">https://www.facebook.com/ExeterNHPublicWorks/posts/2166217660191788</a>

BMP	Post Message	Posted	Lifetime Post Total Reach	Permalink
2	Rain barrels are a great way to conserve water and reduce your water usage. Order one before May 25th for the most convenient way to receive a rain barrel with Exeter's discount. Rain Water Facts: ☪ It takes less than 1/8 inch of rain water to fill a well situated in a 60 gallon rain barrel. ☪ Sixty gallons can cover about 100 square feet with 1 inch of water. ☪ Water consumption increase between 20 and 200% in the summer months. Order here: <a href="https://www.greatamericanrainbarrel.com/community/">https://www.greatamericanrainbarrel.com/community/</a> #waterconservation #rainwater	5/15/20 6:00 AM	534	<a href="https://www.facebook.com/ExeterNHPublicWorks/posts/2182775861869301">https://www.facebook.com/ExeterNHPublicWorks/posts/2182775861869301</a>
2	Think Blue! ☪ Are you finding yourself focusing on your home improvement projects due to the stay at home order? We can tell with the increased traffic at the Transfer Station! If your next focus is your lawn check out these homeowner tips! 🏠 <a href="https://www.exeternh.gov/bcc/think-blue-homeowners-HealthyLawns/CleanWater">https://www.exeternh.gov/bcc/think-blue-homeowners-HealthyLawns/CleanWater</a>	5/29/20 7:46 AM	378	<a href="https://www.facebook.com/ExeterNHPublicWorks/posts/2199177510229136">https://www.facebook.com/ExeterNHPublicWorks/posts/2199177510229136</a>
1	Looking for a new route to walk your pup this weekend? Maybe choose a route that has one of the handy pet waste stations! Where ever you choose to walk your pup please do your part and clean-up your dog's waste. Pet waste (including that associated with farm animals) is more than just a nightmare for our shoes. Just like human sewage, untreated pet fecal matter is harmful to waterways. Rain washes pet waste containing excess nitrogen and disease-causing organisms, such as giardia and salmonella, into rivers and streams via storm drains. <a href="https://www.exeternh.gov/bcc/think-blue-pet-waste">https://www.exeternh.gov/bcc/think-blue-pet-waste</a>	5/30/20 5:01 AM	518	<a href="https://www.facebook.com/ExeterNHPublicWorks/posts/2199380583542162">https://www.facebook.com/ExeterNHPublicWorks/posts/2199380583542162</a>
2	Want to learn more about growing and maintaining a beautiful lawn, but also protecting our valuable water resources? Tune into this great webinar to learn about grass seed options, fertilizer, watering and even mowing!	6/12/20 11:05 AM	334	<a href="https://www.facebook.com/ExeterNHPublicWorks/posts/2215606201919600">https://www.facebook.com/ExeterNHPublicWorks/posts/2215606201919600</a>
5	A slight unpleasant, but very important reminder! The New Hampshire Department of Environmental Services is urging residents to only flush human waste & toilet paper! Many items claim to be "flushable," but they don't break down easily and can clog public sewer and septic systems. The bottom line is that the only safe items to flush are human waste and toilet paper. If you are forced to use something other than toilet paper, please place it in a bag and dispose of it in your trash. NH Department of Environmental Services #flushable #onething4earth <a href="https://www.des.nh.gov/media/pr/2020/20200324-flush.htm">https://www.des.nh.gov/media/pr/2020/20200324-flush.htm</a>	6/17/20 10:35 AM	527	<a href="https://www.facebook.com/ExeterNHPublicWorks/posts/2221098994703654">https://www.facebook.com/ExeterNHPublicWorks/posts/2221098994703654</a>
<b>Conservation Commission FB Page</b>				
2	Just a reminder: there is still time to order your rain barrel. Exeter Parks and Recreation, Exeter, NH Public Works, Town of Exeter, NH	4/20/20 7:02 AM	258	<a href="https://www.facebook.com/permalink.php?story_fbid=2900496910035927&amp;id=473302939422015">https://www.facebook.com/permalink.php?story_fbid=2900496910035927&amp;id=473302939422015</a>
7	These 6 minutes of peace brought to you by the beautiful Norris Brook.	4/15/20 5:09 PM	589	<a href="https://www.facebook.com/permalink.php?story_fbid=2890171651068453&amp;id=473302939422015">https://www.facebook.com/permalink.php?story_fbid=2890171651068453&amp;id=473302939422015</a>
2	While we are home with our gardens and yards to putter in, consider attending this upcoming webinar to learn how small changes you can make in your yard can make a big difference for wildlife including pollinators.	4/10/20 11:56 AM	244	<a href="https://www.facebook.com/permalink.php?story_fbid=2878514788900806&amp;id=473302939422015">https://www.facebook.com/permalink.php?story_fbid=2878514788900806&amp;id=473302939422015</a>
2	Need a distraction? Plan for your gardening and purchase a rain barrel today. Due to the need to deliver, this is open to Exeter residents only. Visit: <a href="https://www.greatamericanrainbarrel.com/community/">https://www.greatamericanrainbarrel.com/community/</a>	3/18/20 9:41 AM	682	<a href="https://www.facebook.com/permalink.php?story_fbid=2828796010539351&amp;id=473302939422015">https://www.facebook.com/permalink.php?story_fbid=2828796010539351&amp;id=473302939422015</a>
7	Here are some of our highlights from 2019. Thank you for a wonderful year! 13 PUBLIC EVENTS, 535 PEOPLE, 24.4K FB REACH #185 Event Attendees and #350 Students We had a very active event season this year! Highlights include: Full Moon Snowshoe at Irvine, Cottontail Survey Workshop, 5th Grade Spring Tree Program, #TrashTag Clean-Up with SST Students, Invasive Pull with PEA Students, Bats and Bat House Workshop, CMS 8th Grade Water Quality Project, Invasive Plant Pull at Henderson Swasey, McDonnell Bird Walk, Window Repair Workshop, Exploring Exeter: Little River, Water Trail Tour and Raynes Farm Winter Solstice	1/7/20 7:16 AM	507	<a href="https://www.facebook.com/permalink.php?story_fbid=2676625985756355&amp;id=473302939422015">https://www.facebook.com/permalink.php?story_fbid=2676625985756355&amp;id=473302939422015</a>
7	Some reasons we work to protect our intact forested landscape. 21 Reasons Why Forests Are Important: On top of flood control, soaking up surface runoff also protects ecosystems downstream. Modern stormwater increasingly carries toxic chemicals, from gasoline and lawn fertilizer to pesticides and pig manure, that accumulate through watersheds and eventually create low-oxygen "dead zones."	9/30/19 6:46 AM	133	<a href="https://www.facebook.com/permalink.php?story_fbid=2454597441292545&amp;id=473302939422015">https://www.facebook.com/permalink.php?story_fbid=2454597441292545&amp;id=473302939422015</a>

BMP	Post Message	Posted	Lifetime Post Total Reach	Permalink
7	Hey Exeter! Every Drop wants to know what your favorite restaurant with a view is around the seacoast. Chime in with your pick and give Every Drop a like!	8/29/19 2:43 PM	81	<a href="https://www.facebook.com/permalink.php?story_fbid=2394028824016074&amp;id=473302939422015">https://www.facebook.com/permalink.php?story_fbid=2394028824016074&amp;id=473302939422015</a>
7	Join the Exeter Conservation Commission and Parks and Recreation for the 3rd event in our Exploring Exeter series. This time, we take it to the river!	8/29/19 8:29 AM	162	<a href="https://www.facebook.com/permalink.php?story_fbid=2393511290734494&amp;id=473302939422015">https://www.facebook.com/permalink.php?story_fbid=2393511290734494&amp;id=473302939422015</a>
7	Explore the estuary with the Great Bay Waterkeeper Melissa Paly and Bob Glowacky. .	8/25/19 8:47 AM	135	<a href="https://www.facebook.com/permalink.php?story_fbid=2386117624807194&amp;id=473302939422015">https://www.facebook.com/permalink.php?story_fbid=2386117624807194&amp;id=473302939422015</a>
7	Brentwood Fall Paddle - Open to All	8/21/19 11:49 AM	123	<a href="https://www.facebook.com/permalink.php?story_fbid=2379099312175692&amp;id=473302939422015">https://www.facebook.com/permalink.php?story_fbid=2379099312175692&amp;id=473302939422015</a>
7	Did you miss our tour of the water trail? No problem! Follow the rain drop markings along this path starting at Main Street School for a self-guided tour! <a href="http://www.therpc.org/application/files/1115/5742/2614/Water_Trail_Flyer_with_map2.pdf">http://www.therpc.org/application/files/1115/5742/2614/Water_Trail_Flyer_with_map2.pdf</a>	8/19/19 10:00 AM	136	<a href="https://www.facebook.com/permalink.php?story_fbid=2375141722571451&amp;id=473302939422015">https://www.facebook.com/permalink.php?story_fbid=2375141722571451&amp;id=473302939422015</a>
7	Another delightful history minute about our rivers. Did you know that Exeter, New Hampshire, was a seaport? The town was founded around two rivers -- the fresh water Exeter River and the salt water Squamscott -- and the rivers served as the major transportation route for many years, as well as a source of economic prosperity. Tune into our latest episode of the Exeter History Minute to learn more about Exeter the seaport.	8/15/19 11:24 AM	207	<a href="https://www.facebook.com/permalink.php?story_fbid=2368503023235321&amp;id=473302939422015">https://www.facebook.com/permalink.php?story_fbid=2368503023235321&amp;id=473302939422015</a>
7	Please join us for this exciting tour of the newly installed Water Trail with Rockingham Planning Commission's Julie LaBranche on August 13th at 5PM. We will meet at the Main Street Elementary School's parking lot.	8/8/19 7:46 AM	87	<a href="https://www.facebook.com/permalink.php?story_fbid=2355714837847473&amp;id=473302939422015">https://www.facebook.com/permalink.php?story_fbid=2355714837847473&amp;id=473302939422015</a>
7	Exeter-Squamscott River Local Advisory Committee wants to know...can you name the 5 rivers that feed Great Bay? First correct post wins a gold star for the day 🌟	8/7/19 1:42 PM	192	<a href="https://www.facebook.com/permalink.php?story_fbid=2354340257984931&amp;id=473302939422015">https://www.facebook.com/permalink.php?story_fbid=2354340257984931&amp;id=473302939422015</a>
7	Always entertaining, this History Minute details our not so respectful past with our local rivers. Did you know that Exeter, New Hampshire, was a seaport? The town was founded around two rivers -- the fresh water Exeter River and the salt water Squamscott -- and the rivers served as the major transportation route for many years, as well as a source of economic prosperity. Tune into our latest episode of the Exeter History Minute to learn more about Exeter the seaport.	7/31/19 11:10 AM	117	<a href="https://www.facebook.com/permalink.php?story_fbid=2341978392554451&amp;id=473302939422015">https://www.facebook.com/permalink.php?story_fbid=2341978392554451&amp;id=473302939422015</a>
<b>Healthy Lawns/Clean Water FB Page</b>				
2	We know that mowing less encourages stronger grass roots so grass requires less water. Did you know it can also reduce lawn weeds? Check out this article from the Wild Seed Project out of Portland. Be sure to give their page a "like". They are a great seed and info resource for landscaping with native plants.	12/21/19 5:34 AM	23	<a href="https://www.facebook.com/exeterhealthylawns-cleanwater/posts/2600807973370372">https://www.facebook.com/exeterhealthylawns-cleanwater/posts/2600807973370372</a>
2	Rain got you down? Learn how to create a beautiful water loving rain garden.	12/14/19 10:33 AM	31	<a href="https://www.facebook.com/exeterhealthylawns-cleanwater/posts/2586131814837988">https://www.facebook.com/exeterhealthylawns-cleanwater/posts/2586131814837988</a>
2	Looking to design your water quality spring plantings?	12/12/19 2:46 PM	23	<a href="https://www.facebook.com/exeterhealthylawns-cleanwater/posts/2581968821920954">https://www.facebook.com/exeterhealthylawns-cleanwater/posts/2581968821920954</a>
2	Supporting a healthy soil complete with all its biological players is an important component to healthy lawns and landscaping—not to mention essential in natural areas to sustain the cycle of life.	11/27/19 11:46 AM	14	<a href="https://www.facebook.com/exeterhealthylawns-cleanwater/posts/2547218638729306">https://www.facebook.com/exeterhealthylawns-cleanwater/posts/2547218638729306</a>

BMP	Post Message	Posted	Lifetime Post Total Reach	Permalink
7	We look forward to the outcome from this important research at UNH aimed at helping us understand the role forests play in nitrogen removal and carbon storage.	11/14/19 5:48 PM	27	<a href="https://www.facebook.com/exeterhealthylawnscleanwater/posts/2518425511608619">https://www.facebook.com/exeterhealthylawnscleanwater/posts/2518425511608619</a>
7	Tune in to hear how TNC is working to improve culverts for habitat improvement and flood reduction. Tune in to The Exchange this morning beginning at 9am to hear our own David Patrick talking making NH's tidal culverts friendlier to nature and safer for people with Annie Ropeik and Sam Evans-Brown. We'll be listening!	8/25/19 8:56 AM	19	<a href="https://www.facebook.com/exeterhealthylawnscleanwater/posts/2354587364659102">https://www.facebook.com/exeterhealthylawnscleanwater/posts/2354587364659102</a>
7	Join RPC and the Conservation Commission tonight at 5 pm for a guided walk along the newly installed Water Trail!	8/13/19 9:27 AM	11	<a href="https://www.facebook.com/exeterhealthylawnscleanwater/posts/2332391866878652">https://www.facebook.com/exeterhealthylawnscleanwater/posts/2332391866878652</a>
2	We have long been intrigued and fascinated by what our healthy oceans may support.	8/8/19 4:19 AM	22	<a href="https://www.facebook.com/exeterhealthylawnscleanwater/posts/2322902551160917">https://www.facebook.com/exeterhealthylawnscleanwater/posts/2322902551160917</a>
2	Where are our water enthusiasts? ESRLAC wants to know...can you name the 5 rivers that feed Great Bay?	8/7/19 1:40 PM	32	<a href="https://www.facebook.com/exeterhealthylawnscleanwater/posts/2321810251270147">https://www.facebook.com/exeterhealthylawnscleanwater/posts/2321810251270147</a>
2	Register today to learn about how to have healthy lawn AND clean water!	6/12/20 10:23 AM	12	<a href="https://www.facebook.com/exeterhealthylawnscleanwater/posts/3010340285750470">https://www.facebook.com/exeterhealthylawnscleanwater/posts/3010340285750470</a>
2	Exeter residents: We have opened the 2020 Rain Barrel sale. Purchase yours today. <a href="https://www.greatamericanrainbarrel.com/community/">https://www.greatamericanrainbarrel.com/community/</a>	3/18/20 9:42 AM	19	<a href="https://www.facebook.com/exeterhealthylawnscleanwater/posts/2802137539904080">https://www.facebook.com/exeterhealthylawnscleanwater/posts/2802137539904080</a>

BMP	Description	BMP Total Posts
1	Pet Waste	867
2	Fertilizer, Healthy Lawn/Clean Water	2,961
5	Septic Systems	9,086
6	Leaf/Yard Waste	8,044
7	Conservation Commission guests and events	3,392
11	Cleanups - shoreline/waterbody	177
Add'l Pub. Partic.	Additonal Public Participation - HHW Collection Event	1,907
36	Street Sweeping	444
	<b>Total</b>	<b>26,878</b>

EXTV PSAs



Clean Campfire PSA

Added 7 months ago

[Show More](#)



Digging Out a Fire Hydrant PSA

Added 7 months ago

[Show More](#)



Electric Car? How About an Electric Lawn Mower

Added about a year ago

[Show More](#)



Exeter, NH Waste Water Treatment Project

Added 2 months ago

[Show More](#)



How to Build a Rain Garden

Added about a year ago

[Show More](#)



Instream Flow - NHDES Videos

Added 7 months ago

[Show More](#)



Instream Flow Program: Water for People and Wildlife

Added about a year ago

[Show More](#)



Pollution Prevention 101

Added about a year ago

[Show More](#)



Protecting New Hampshire's Wetlands

Added about a year ago

[Show More](#)



Reducing Water Pollution

Added about a year ago

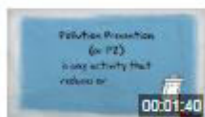
[Show More](#)



Salem Street Utilities Project

Added about 22 hours ago

[Show More](#)



What is Pollution Prevention?

Added about a year ago

[Show More](#)

## Public Works

View

Edit

Revisions

Clone content

### Stormwater



Rain and snowmelt (stormwater) on buildings, streets, parking lots, and other impervious surfaces cannot soak into the ground. As stormwater moves across these surfaces, it collects dirt, debris, and chemicals carrying them directly to our rivers and streams.

In March 2003, Exeter was required to apply to the Environmental Protection Agency (EPA) for a permit to discharge stormwater. In order to meet the requirements of the permit, Exeter must reduce pollutants in stormwater discharges to the "maximum extent practicable." The permit

required the development of a Stormwater Pollution Prevention Plan (SWPPP) to address how we would reduce stormwater pollution.

In January 2017, EPA issued an update to the MS4 permit, which went into effect on July 1, 2018. The new permit has expanded the requirements of the 2003 permit to include enhanced mapping, record keeping, pollutant tracking, and reporting requirements. The [Stormwater Management Program \(SWMP\)](#) describes the Best Management Practices that the Town is using to address the MS4 requirements. It is available for review online or at the Public Works office during regular business hours. **The public is encouraged to submit written comments on the SWMP to [publicworks@exeternh.gov](mailto:publicworks@exeternh.gov).**

- + About Us
- Subscribe to News
- Water Restrictions
- + Drinking Water
- + Engineering
- + Highway
- + Maintenance
- + Reports and Studies
- Stormwater
- Transfer Station
- + Trash and Recycling
- + Wastewater

Added to website 9/24/2019

**Introduction**

This report highlights overall participation in the October 19, 2019 Household Hazardous Waste Collection as well as participation by Exeter residents. This collection was funded by municipal assessments, participant donations, and a grant received by the Rockingham Planning Commission from the NH Dept. of Environmental Services.

**2019 Collection Overview**

The October 19, 2019 HHW collection event was held at the Exeter Public Works Garage from 8:00AM-1:00PM. Residents from East Kingston, Epping, Exeter, Newfields, Seabrook, South Hampton, and Stratham could participate in the event.

**2019 Total Participation**

In 2019, a total of 433 households participated in the HHW collection region-wide. This was down slightly from the 2018 total of 448 households. However, participation from Exeter residents increased. In 2019, 181 Exeter households participated in the HHW collection compared to 167 in 2018. 43% of Region-wide participants were first time attendees in 2019, compared to 40% in 2018. Among Exeter residents, 43% of participants were first time attendees in 2019 compared to 38% in 2018.

The table below shows the number of households that participated in the collection event from each municipality and the percentage of first-time participants from each municipality. For comparison, it also highlights the population of each municipality and its percentage of the total population. Exeter residents participate in the HHW collection at a higher rate than expected based on population; Exeter accounts for 35% of the region-wide population but comprised 42% of HHW participants.



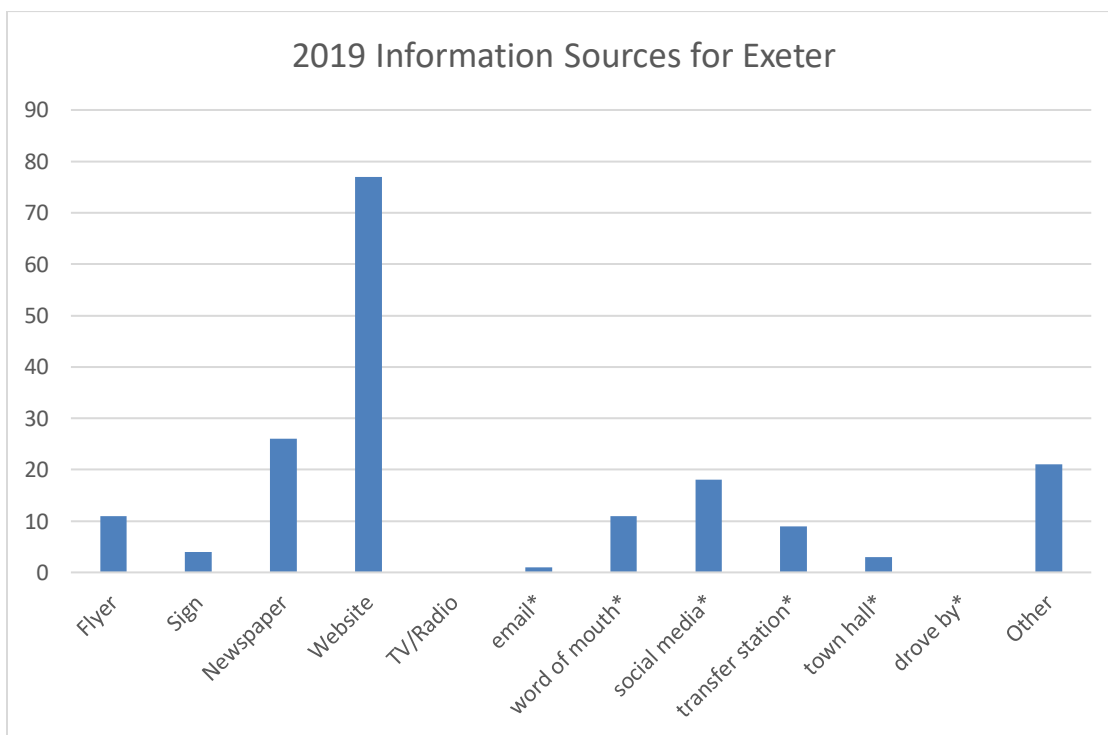
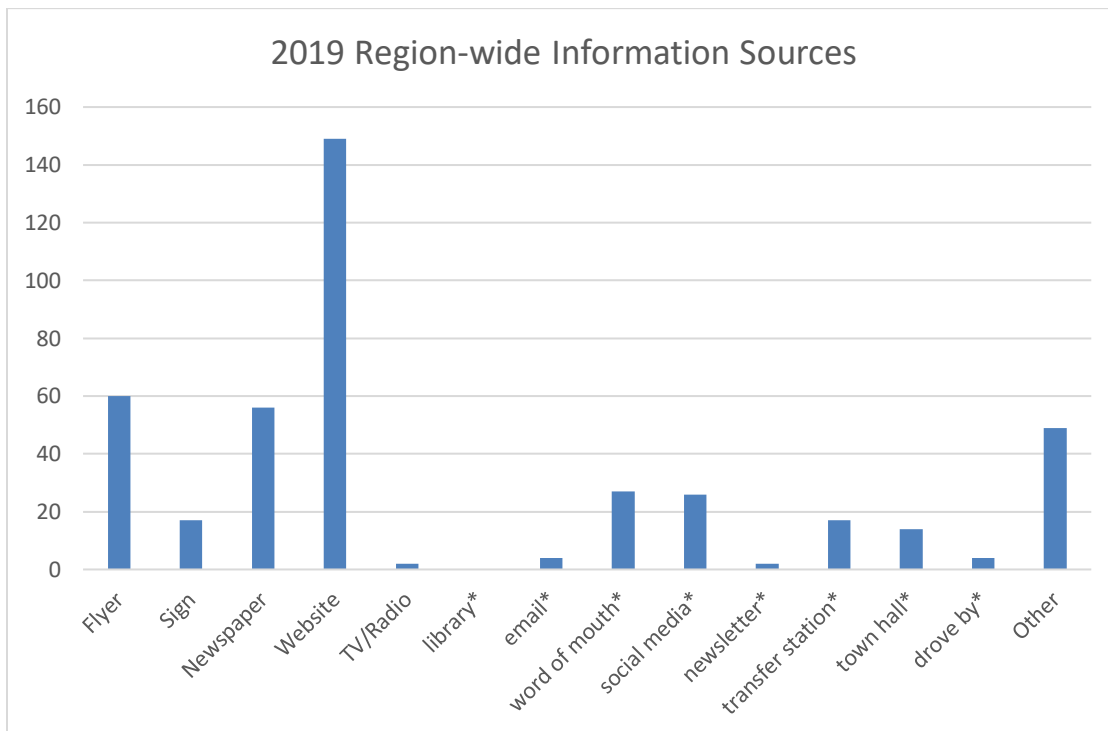
Municipality	Population*	% of Region-wide Population	Households Participating	% of First Time Participants
East Kingston	2,425	6%	14	43%
Epping	7,025	16%	51	43%
Exeter	15,365	35%	181	43%
Newfields	1,721	4%	18	33%
Seabrook	8,908	20%	12	75%
South Hampton	826	2%	4	25%
Stratham	7,492	17%	153	42%
Region-wide	43,762		433	43%

*\*NH Office of Strategic Initiatives 2018 Population Estimates*

### Information Sources

Region-wide, websites provided the largest source of information to participants; 149 households reported learning about the collection through a website. Websites were also the most widely used source of information in 2018. Several entities have websites that list the HHW collection event, including Rockingham Planning Commission, NH Dept. of Environmental Services, and each participating municipality. Therefore, it may be beneficial in future years to distinguish these options on the survey. Among Exeter residents, websites were also the most commonly cited source of information in both 2018 and 2019.

Region-wide, 60 households reported learning about the collection from a flier, making it the second most used information source in 2019 and 2018. 56 households region-wide reported learning about the collection through the newspaper and this was the second most common source of information among Exeter residents. 49 households reported learning about the collection from a source not included in the survey. Information sources marked with an asterisk below denote sources that were not listed as options on the survey, but rather were reported by individuals who selected “other” and then specified a source. It may be beneficial to update the survey in 2020 to include these sources.



**Materials Collected**

The October 19, 2019 HHW collection manifested a total of 10,860 pounds of waste. Of this, 8,160 pounds were ignitable; 0 pound was reactive; 2,400 pounds were toxic, and 300 pounds were corrosive. This is down significantly from the volume of waste collected in 2018.

	<b>2018</b>	<b>2019</b>
<b>Total waste collected (lbs)</b>	23,039	10,860
<b>Ignitable (lbs)</b>	17,877	8,160
<b>Reactive (lbs)</b>	1	0
<b>Toxic (lbs)</b>	2,281	2,400
<b>Corrosive (lbs)</b>	976	300
<b>Waste per household (lbs)</b>	51.4	25.1

The fact that the volume of waste per household decreased in 2019 may be an indication that the HHW program is having a positive impact on purchasing decisions. Every HHW collection program should have 3 primary goals:

1. Help residents identify the HHW they currently have in their homes.
2. Provide a safe way for residents to properly dispose of the HHW they currently have.
3. Educate residents about environmentally friendly products so they can reduce the amount of HHW they purchase going forward.

As such, a reduction in the volume of waste collected per household may indicate that residents are making more environmentally friendly purchasing decisions and are therefore generating less HHW to dispose of.

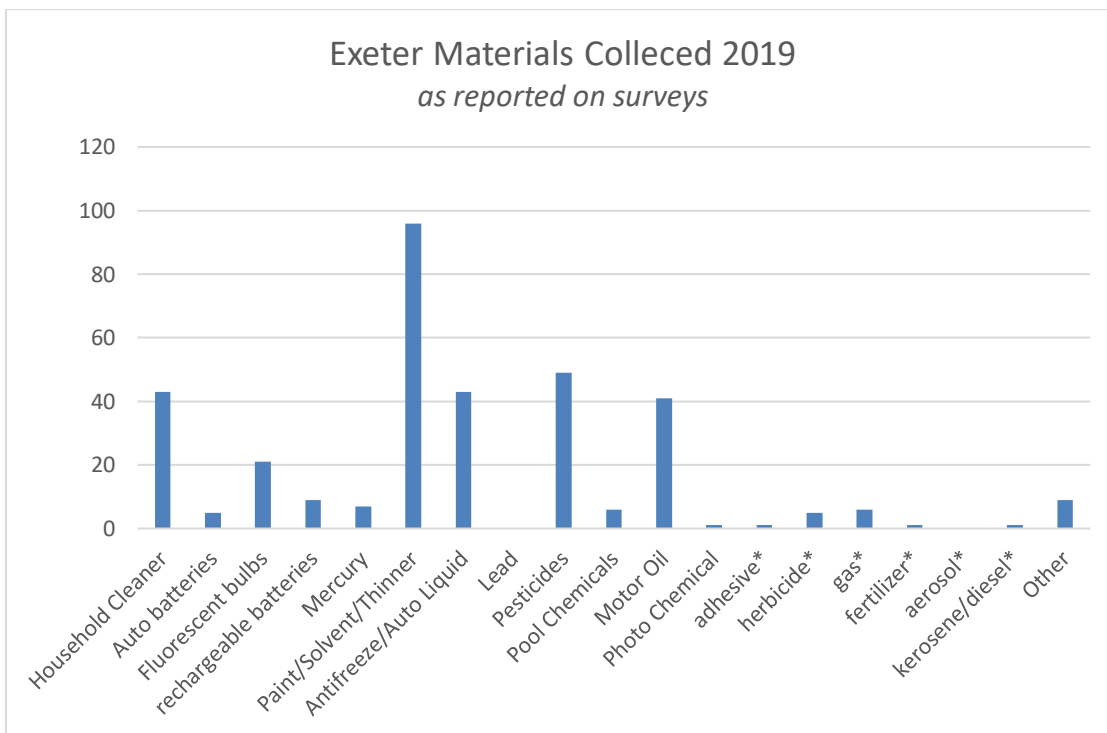
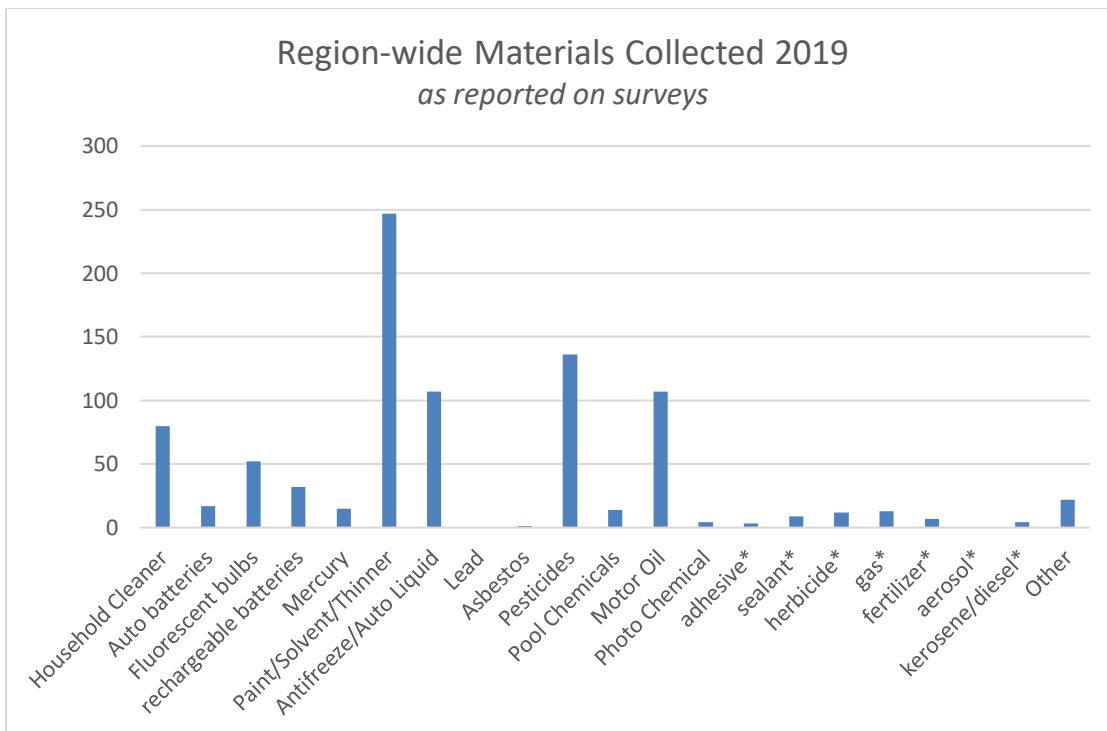
The composition of waste collected through the October 19, 2019 HHW event, as reported on participant surveys, is shown below. Oil-based Paint/Solvents/Thinners were the most common item received; 247 households Region-wide (57%) brought these items to the 2019 collection event. This is down slightly from 2018 when 64% of participants brought these materials, but it remains the largest category of items collected. Because Paint/Solvents/Thinners is a broad category and because paint historically comprises such a large percentage of the waste collected at HHW events, it is recommended that future surveys separate Paint from Solvents/Thinners.

Pesticides were the second most common item collected in 2019, with 136 households (31%) reporting to bring them. This was an increase from 2018 when pesticides were the third most common item at 113 households (25%).

Antifreeze/Automotive Liquid and Used Motor Oil tied as the third most common types of items collected in 2019. 107 households (24%) reported bringing each of these categories of materials to the HHW collection.

Among Exeter residents, Paint/Solvents/Thinners were the most commonly collected items again in 2019, with 96 households bringing these materials. This was down slightly from 110 households in 2018. Pesticides were the second most commonly collected item in 2019 among Exeter residents (49 households), followed by household cleaners and antifreeze/auto liquids (43 households each), and motor oil (41 households).

HHW types marked with an asterisk below denote categories that were not listed as options on the survey, but rather were reported by individuals who selected “other” and then specified what material they brought. It may be beneficial to update the survey for 2020 to include these categories.





# Think Blue: Pet Waste



## → Pet Waste

- Harmful to waterways
- Rain washes pet waste into stream and rivers
- Contains excess nitrogen and disease-causing organisms

## → You Can Help

- Clean up after your pet
- Always carry a pet waste bag
- Dispose of bag in the garbage or any of the 19 pet waste disposal stations in Town
- Commit to “Scoop the Poop”

**EVERY DROP**

Small Changes. Big Difference.



Your town wants to hear from you! Visit [stateofourestuaries.org/everydrop/doody](https://stateofourestuaries.org/everydrop/doody)

## → Resources

- **Exeter, NH Think Blue: Pet Waste**  
<https://www.exeternh.gov/bcc/think-blue-pet-waste>
- **Exeter, NH Dog License**  
<https://www.exeternh.gov/townclerk/dog-license>
- **NHDES Pet Waste Outreach Campaign**  
[https://www.des.nh.gov/organization/divisions/water/wmb/coastal/scoop\\_the\\_poop.htm](https://www.des.nh.gov/organization/divisions/water/wmb/coastal/scoop_the_poop.htm)
- **State of the Estuaries**  
<https://stateofourestuaries.org/everydrop/petpledge/>

Contact: Town of Exeter, NH 10 Front St Exeter, NH 03833 (603) 772-6112



# YOUR SEPTIC SYSTEM IS YOUR RESPONSIBILITY

## Do Your Part Be SepticSmart

### On a Septic System?

When's the last time you thought about it?

### Did You Know?

Common Household leaks can add hundreds of extra gallons of water everyday, stressing your septic system.

Overloading your septic system with water is a leading cause of failure.

Save water and support your septic system's health. For the long-term care of your system, have your septic tank inspected and pumped out by a licensed septic tank contractor as needed (on average every three to five years).

Know your part, be  
SepticSmart!

Learn more at:

[www.epa.gov/septicSMART](http://www.epa.gov/septicSMART)

  
septicSMART™

U.S. Environmental Protection Agency

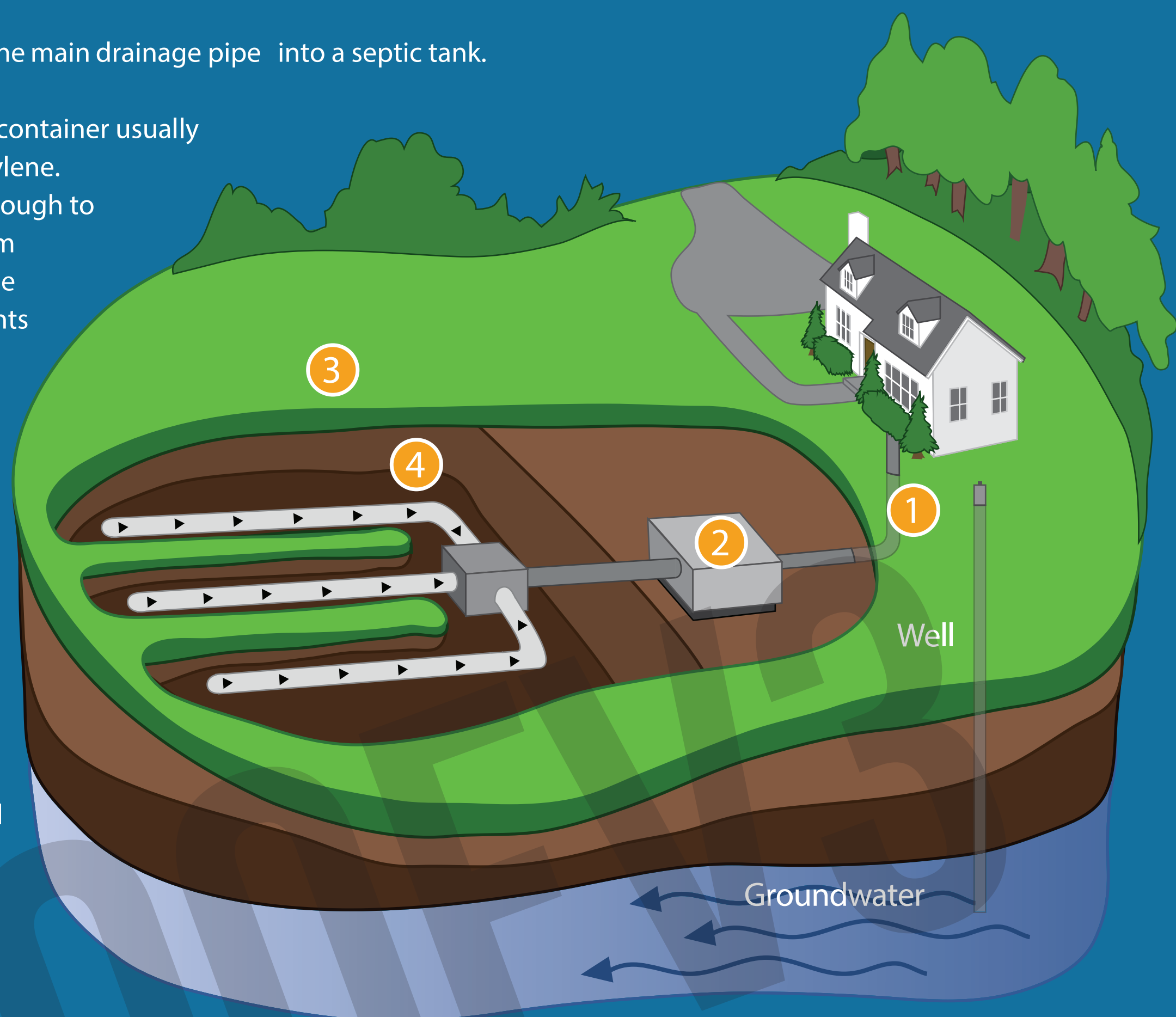


# FAILING SEPTIC SYSTEMS IS A MAJOR WATER QUALITY CONCERN IN THE GREAT BAY WATERSHED

## How does a septic system work?

This is a simplified overview of how a septic system works.

- 1 All water runs out of your house from one main drainage pipe into a septic tank.
- 2 The septic tank is a buried, water-tight container usually made of concrete, fiberglass or polyethylene. Its job is to hold the wastewater long enough to allow solids to settle down to the bottom (forming sludge), while the oil and grease floats to the top (as scum). Compartments and a T-shaped outlet prevent the sludge and scum from leaving the tank and traveling into the drainfield area.
- 3 The liquid wastewater then exits the tank into the drainfield. If the drainfield is overloaded with too much liquid, it will flood, causing sewage to flow to the ground surface or create backups in toilets and sinks.
- 4 Finally, the wastewater percolates into the soil, naturally removing harmful bacteria, viruses, and nutrients.



**HOW A SEPTIC SYSTEM WORKS** AgriLIFE EXTENSION  
For More Info

**Wastewater Source (House)**

The source of wastewater is the domestic water used in homes, schools or businesses that the treatment system serves. Domestic wastewater is water discharged from plumbing fixtures, appliances, toilets, baths, laundry and the dishwasher. Wastewater is typically 99.9% liquid.

**Overview**

To Septic Tank To Aerobic System

**HOW A SEPTIC SYSTEM WORKS** AgriLIFE EXTENSION  
For More Info

**To House**

**Conventional Septic System Final Treatment and Dispersal**

This is the final step in removing contaminants from the wastewater. Gravity flow systems are the most widely used and least expensive, and they require the least amount of operation and maintenance. The dispersal of the wastewater is typically a standard subsurface drain field. This consists of gravel filled trenches, plastic chambers or plastic pipe installed underground to hold the wastewater leaving the tanks until it can seep into the surrounding soil. The soil provides most of the wastewater treatment. Microbes living in the soil break down solids and kill bacteria and pathogens in the wastewater.

**Final Treatment and Dispersal**

Septic System Pretreatment

**HOW A SEPTIC SYSTEM WORKS** AgriLIFE EXTENSION  
For More Info

**To House**

**Conventional Septic System Pretreatment**

In the pretreatment portion of a septic system, many of the contaminants are removed from the wastewater in order to prepare it for final treatment and discharging to the environment. The main unit of the pretreatment portion of the system is the tank - commonly called a septic tank. Septic tanks are used to settle out solids and partially treat wastewater before it reaches the distribution system. Many of the septic tanks used now are 2 compartment tanks. Multiple tanks can improve sludge and scum removal. Sludge are solids that fall to the bottom of the tanks and scum is the fat, oils and grease that float on the top of the water in the tank. Tanks should be pumped every 2 - 3 years.

**Final Treatment and Dispersal**

Septic System Pretreatment

**HOW A SEPTIC SYSTEM WORKS** AgriLIFE EXTENSION  
For More Info

**To House**

**Conventional Septic System Final Treatment and Dispersal**

When a septic system is not properly maintained or if it fails, untreated domestic wastewater can back up into the house or leach out through the drain field. The untreated water could also reach the groundwater, river, stream or lake. If numerous septic tanks in an area are failing, the waste can become a major source of pollution

**Final Treatment and Dispersal**

Septic System Pretreatment

Your septic system is part of your home and your responsibility!





# EXETER FALL LEAF PICK-UP 11/25 – 11/30

## 2019 Fall Leaf Pick-Up

Waste Management will pick-up leaves on curbside. Bags **MUST** be biodegradable paper bags and placed curbside by 7 a.m. on your rubbish collection day (12 bag limit per residence). Bags are available to purchase at local hardware or grocery stores. In addition, leaves can be taken directly to the Transfer Station (no permit required) during hours of operation. Leaves brought to the Transfer Station or collected curbside are composted. Compost is available to residents free of charge.



Town of Exeter

Fall 2019  
Leaf Pick-Up

11/25/19  
to  
11/30/19

## PUBLIC WORKS

13 Newfields Rd.  
Exeter, NH 03833  
603-773-6157  
[www.exeternh.gov/publicworks](http://www.exeternh.gov/publicworks)

Monday-Friday  
7:00 am – 3:30 pm



Exeter, NH Public Works

April 6 · 🌐



Tuesday & Wednesday morning this week the Highway crew will be clearing the sand and loose debris from the sidewalks downtown. This will begin at 6am on both days!

You and 5 others

1 Comment 2 Shares

Like

Comment

Share

Most Relevant ▾



Write a comment...



Paul Royal

Who knew two months ago that the most coveted job in town would be street sweeper driver?

Alone, safe, productive, no one on the road.

Thanks, whomever you are!



Like · Reply · 20w

3

# Exeter Municipal Report (2019-01-01 - 2019-12-31)

## Land Use Conversion Table

Soils		Existing Conditions			Future Conditions			Report of Origin
Hydrologic Group	Acres	Land Use Type	Acres	Impervious and/or Paved Surfaces Acres	Land Use Type	Acres	Impervious and/or Paved Surfaces Acres	
B	1.25	Forest	1.25	0.00	Open Space	1.25	0.00	TIF Road Development Plans
B	1.11	Forest	1.11	0.00	Transportation (roads/parking lots)	1.11	1.11	
B	0.08	Forest	0.08	0.00	Disturbed	0.08	0.00	
B	0.09	Disturbed	0.09	0.00	Transportation (roads/parking lots)	0.09	0.09	
C	0.02	Forest	0.02	0.00	Open Space	0.02	0.00	
B	1.20	Forest	1.20	0.00	Transportation (roads/parking lots)	1.20	1.20	Tif Road Development Plans
B	0.06	Open Space	0.06	0.00	Transportation (roads/parking lots)	0.06	0.06	Town of Exeter, NH Utility Extension Project on Epping Road
C/D	0.28	Forest	0.09	0.00	Transportation (roads/parking lots)	0.09	0.09	
		Open Space	0.19	0.00	Transportation (roads/parking lots)	0.19	0.19	
Not Specified	0.00	Not Specified	0.00	0.00	Not Specified	0.00	0.00	DPW Maintenance 2018
Not Specified	0.00	Not Specified	0.00	0.00	Not Specified	0.00	0.00	DPW Maintenance MS4 permit Y2 activities 7/1/19-6/30/20
Not Specified	0.00	Not Specified	0.00	0.00	Not Specified	0.00	0.00	Exeter Municipal Report 2019 activities

Soils		Existing Conditions			Future Conditions			Report of Origin
B	2.52	Forest	2.43	0.00	Open Space	1.25	0.00	Ray Farm
					Transportation (roads/parking lots)	1.11	1.11	
					Disturbed	0.08	0.00	
		Disturbed	0.09	0.00	Transportation (roads/parking lots)	0.09	0.09	
C	0.02	Forest	0.02	0.00	Open Space	0.02	0.00	
C	1.48	Commercial/Institutional	1.48	0.73	Commercial/Institutional	1.48	0.76	18 Hampton Road, Exeter, NH
B	0.52	Commercial/Institutional	0.52	0.00	Commercial/Institutional	0.52	0.29	Wayside Drive Dental Office
B/C	11.70	Forest	11.70	0.00	Commercial/Institutional	11.70	4.60	Unitil/NH Electric Operations DOC - Seacoast Region
<b>Totals</b>	<b>20.33</b>		<b>20.33</b>	<b>0.73</b>		<b>20.34</b>	<b>9.59</b>	

## Land Use Change Summary Table

Land Use	Existing Conditions (acres)		Future Conditions (acres)		Change (acres)	
	Total	IC	Total	IC	Total	IC
Commercial/Institutional	2	0.73	13.7	5.65	11.7	4.92
Disturbed	0.18	0	0.16	0	-0.02	0
Forest	17.9	0	0	0	-17.9	0
Open Space	0.25	0	2.54	0	2.29	0
Transportation (roads/parking lots)	0	0	3.94	3.94	3.94	3.94
<b>Totals</b>	<b>20.33</b>	<b>0.73</b>	<b>20.34</b>	<b>9.59</b>	<b>0.01</b>	<b>8.86</b>

# Impervious Cover Management Table

Structural BMP	Impervious Cover Managed	Runoff Volume Storage at Design Capacity (ft <sup>3</sup> )	Design Storm Depth (")	Infiltration Rate (in/hr)	Report of Origin
Bio-filtration	1.02	25507.00	2.0	0.27	TIF Road Development Plans
Bio-filtration	0.33	4587.00	2.0	0.27	
Bio-filtration	0.11	3435.00	2.0	0.27	
Bio-filtration	1.02	25507.00	2.0	0.27	Tif Road Development Plans
Bio-filtration	0.33	4587.00	2.0	0.27	
Bio-filtration	0.11	3435.00	2.0	0.27	
Not Specified	0.00	0.00	0.0	Not Specified	Ray Farm
Not Specified	0.00	0.00	0.1	0	Town of Exeter, NH Utility Extension Project on Epping Road
Extended Dry Detention Pond	0.50	4695.00	2.0	0	18 Hampton Road, Exeter, NH
Infiltration Trench	0.16	230.00	0.5	0.52	DPW Maintenance 2018
Not Specified	0.00	0.00	0.1	Not Specified	DPW Maintenance MS4 permit Y2 activities 7/1/19-6/30/20
Bio-filtration	0.10	182.00	0.5	0.52	Exeter Municipal Report 2019 activities
Bio-filtration	0.20	363.00	0.5	0.52	
Bio-filtration	1.20	2178.00	0.5	0.52	
Infiltration/Surface Infiltration	0.03	560.00	1.0	8.27	Wayside Drive Dental Office
Infiltration Trench	0.26	1987.00	1.5	8.27	
Wet Ponds	4.55	43694.00	1.0	0	Unitil/NH Electric Operations DOC - Seacoast Region
<b>Total Impervious Cover (acres)</b>	<b>0</b>				
<b>Total Management (acres)</b>	<b>9.92</b>				
<b>Effective Impervious Cover (acres)</b>	<b>-9.92</b>				

## BMP List Table

Structural BMP	Infiltration Rate (in/hr)	Impervious Cover Managed	Design Storm Depth (")	Instance Count
<b>Bio-filtration</b>				
	0.52	1.5	1.5	3
	0.27	2.92	12	6
<b>Extended Dry Detention Pond</b>				
	0	0.5	2	1
<b>Infiltration/Surface Infiltration</b>				
	8.27	0.03	1	1
<b>Infiltration Trench</b>				
	8.27	0.26	1.5	1
	0.52	0.16	0.5	1
<b>Wet Ponds</b>				
	0	4.55	1	1
<b>Not Specified</b>				
	0	0	0.1	1
	Not Specified	0	0.1	2

## BMP Summary Table

Structural BMP	IC Managed (acres)	# of BMPs
Bio-filtration	4.42	9
Extended Dry Detention Pond	0.5	1
Infiltration/Surface Infiltration	0.03	1
Infiltration Trench	0.42	2
Wet Ponds	4.55	1
Not Specified	0	3
<b>Totals</b>	<b>9.92</b>	<b>17</b>
<b>Total EIC</b>	<b>-1.06</b>	

## Impervious Cover Management Table - Non Structural BMPs

Non Structural BMP	Amount	Description	Report of Origin
Street Sweeping (# street-miles)	0.13	Annual street sweeping to remove sand and litter	TIF Road Development Plans

<b>Non Structural BMP</b>	<b>Amount</b>	<b>Description</b>	<b>Report of Origin</b>
Catch Basin Cleaning (# basins)	16.00	Bi-annual cleaning of catch basins	
BMP Operation and Maintenance	2.00	Bi-annual inspection for erosion and accumulated sediment and debris. Mow twice a year. Inspect after any rainfall event exceeding 2 inches in 24 hrs	
Street Sweeping (# street-miles)	0.13	Annual street sweeping to remove sand and litter	<a href="#">Tif Road Development Plans</a>
Catch Basin Cleaning (# basins)	16.00	Bi-annual cleaning of catch basins	
Catch Basin Cleaning (# basins)	561.00	catchbasins cleaned June 2018	<a href="#">DPW Maintenance 2018</a>
Street Sweeping (# street-miles)	1400.00	Lane-miles swept from February through November 2018	
Leaf Collection Composting Program (frequency of collection)	2.00	May and November 2018, residents are allowed to have up to 12 bags of leaves picked up. The transfer station also accepts yard waste all year.	
Fertilizer Control Program	1.00	updates to fertilizer ordinance	
Pet Waste Pickup Program	19.00	# of pet waste stations (bags and receptacles) owned and maintained by the town	
BMP Operation and Maintenance	2.00	Bi-annual inspection for erosion and accumulated sediment and debris. Mow twice a year. Inspect after any rainfall event exceeding 2 inches in 24 hrs	
Not Specified	0.00		<a href="#">Town of Exeter, NH Utility Extension Project on Epping Road</a>
Catch Basin Cleaning (# basins)	200.00	Issues with the contractor resulted in less cleaning than planned	<a href="#">DPW Maintenance MS4 permit Y2 activities 7/1/19-6/30/20</a>
Catch Basin Cleaning (# basins)	118.00	Catchbasins cleaned in August 2019	<a href="#">Exeter Municipal Report 2019 activities</a>
Pet Waste Pickup Program	19.00	# of pet waste stations (bags and receptacles) owned and maintained by the Town	
Leaf Collection Composting Program (frequency of collection)	2.00	May and November 2019, residents are allowed to have up to 12 bags of leaves picked up. The transfer station also accepts yard waste all year.	
Pet Waste Pickup Program	1500.00	#rolls of pet waste bags provided to Town residents who register their dog at the start of the year.	
Street Sweeping (# street-miles)	1598.00	Lane-miles swept from February through November 2019	
Other	2.00	Public Involvement: Shoreline/Waterbody Cleanups: April 2019 Seacoast School of Tech (SST) Earth Day spring cleanup of SST parking lot and Morrissette property with 65 students. April 2019 PEA students remove invasive plants from Henderson Swasey Town Forest as part of Climate Action Day.	
Not Specified	0.00		<a href="#">Wayside Drive Dental Office</a>

Non Structural BMP	Amount	Description	Report of Origin
BMP Operation and Maintenance	0.00	Routine inspection and maintenance of on-site surface stormwater pond and subsurface detention system	Unitil/NH Electric Operations DOC - Seacoast Region
Catch Basin Cleaning (# basins)	0.00	Routine inspection and maintenance of on-site catch basins	
Not Specified	0.00		Ray Farm
BMP Operation and Maintenance	0.00	See municipal I & M Mnaual	18 Hampton Road, Exeter, NH

## Impervious Cover Management Summary Table - Non Structural BMPs

Non Structural BMP	Amount
BMP Operation and Maintenance	4
Catch Basin Cleaning (# basins)	911
Fertilizer Control Program	1
Leaf Collection Composting Program (frequency of collection)	4
Pet Waste Pickup Program	1538
Street Sweeping (# street-miles)	2998.26
Other	2



## Wastewater Management Table

Existing Conditions			Future Conditions			Report of Origin
Management Option	Discharge (GPD)	Description	Management Option	Discharge (GPD)	Description	
Sewered	0.00	added	Not Specified	0.00		DPW Maintenance MS4 permit Y2 activities 7/1/19-6/30/20
Undeveloped	0.00	Site has been leveled 8 plus years ago.	Sewered	590.00	Sewer connection from proposed dental office.	Wayside Drive Dental Office
Undeveloped	0.00		Sewered	1686.00		Unitil/NH Electric Operations DOC - Seacoast Region
Sewered	0.00		Sewered	0.00		18 Hampton Road, Exeter, NH
<b>Totals</b>	<b>0</b>			<b>2276</b>		

## Wastewater Management Summary Table

Management Option	Existing Discharge (GPD)	Future Discharge (GPD)	Change (GPD)
Sewered	0	2276	2276
	<b>0</b>	<b>2276</b>	<b>2276</b>