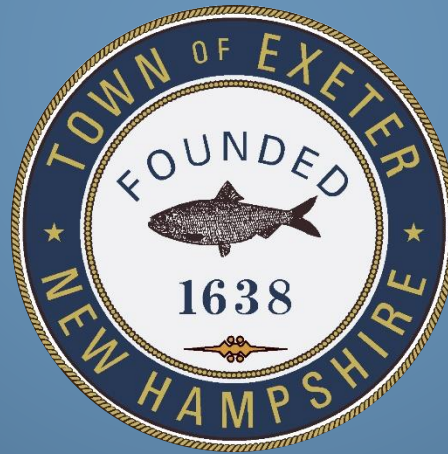


Westside Drive Area Improvements Planning

Select Board Update



May 31, 2022

Introductions

Participants and Project Team

- Town of Exeter
 - Paul Vlasich, PE – Town Engineer
 - Jennifer Perry, PE – DPW Director
- Underwood Engineers
 - Cole Melendy, PE – Project Manager
- NH Department of Environmental Services
 - Deborah Loiselle – Stormwater Coordinator
 - Dennis Greene, PE – Design Engineer



Agenda

1. Background
2. Project Goals and Evaluations Performed
3. Public Participation
4. Conceptual Plan and Budget
5. Next Steps and Schedule
6. Questions



Westside Drive

Project Area

Laperle Ave

Silvio Dr.

Scammon Lane

Tilton Ave.

Westside Drive

Blanche Lane

Westside Drive

Front St

N

11

© 2020 Google

Background

- Phase III Infiltration and Inflow Evaluation (2013)
- CSO Long Term Control Plan Update (2017)
- Westside Drive identified as an area with significant private I/I

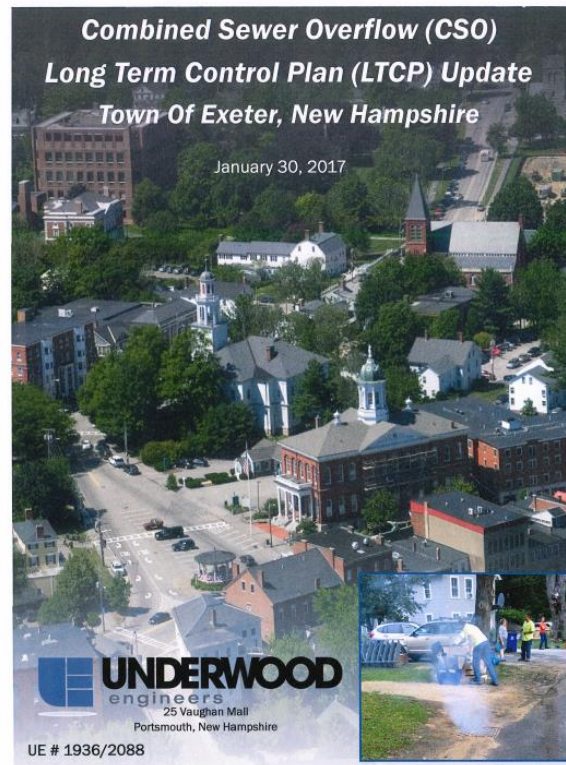
TOWN OF EXETER,
NEW HAMPSHIRE

DRAFT

PHASE III
INFILTRATION AND INFLOW
EVALUATION

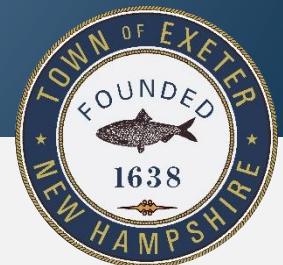
Combined Sewer Overflow (CSO)
Long Term Control Plan (LTCP) Update
Town-Of Exeter, New Hampshire

January 30, 2017



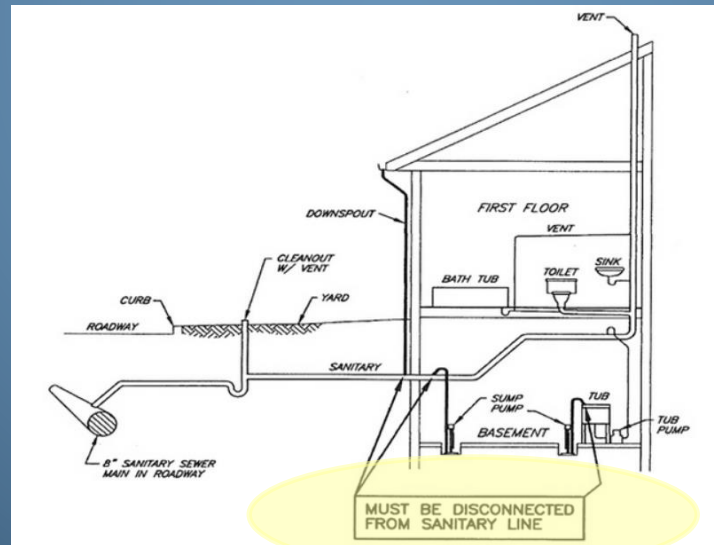
**SUMP PUMP
REMOVAL
PROGRAM***

*Includes roof leaders, floor drains, foundation drains
and other illicit connections



Background

- Private I/I Sources
 - Stormwater systems (sumps/drains) connected to the sewer system
 - Takes up sewer capacity (CSO)
 - Increases WWTF treatment and user costs

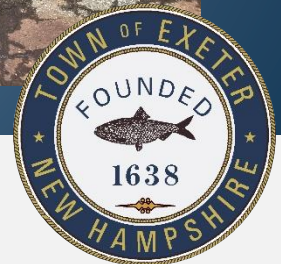


Background

- Project Funding
 - \$100k budget to develop planning documents for the Westside Drive Area
 - \$75K from NHDES CWSRF Loan (with principal forgiveness)
 - \$25K from Town's sewer maintenance fund

Project Goals

- Gather data and evaluate the condition of existing Town infrastructure in the neighborhood (sewer, water, drainage, roads, etc.).
- Solicit input/feedback from residents and public throughout the process.
- Develop a plan to improve Town utilities in the neighborhood to meet the identified infrastructure needs.

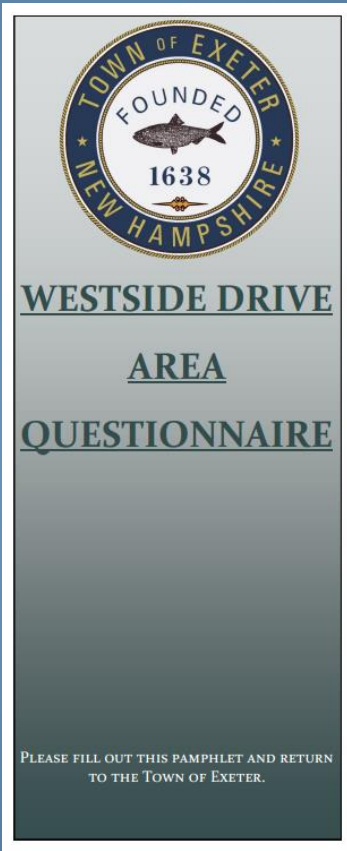


Engineering Evaluations

- Topographical survey of road centerline
- Geotechnical borings and evaluation
- Condition assessment of municipal sewer, water, drainage, and roadway infrastructure
- Building inspections for illicit sewer connections
- Public participation and involvement

Public Participation

- **Public Involvement:**
 - Questionnaire and online survey
 - Public Meeting #1 (October 28, 2020)
 - Public Meeting #2 (September 20, 2021)
 - Summary Meeting (happening tonight)



IC ON THE ADDITIONAL RE THE RE:
 (NE)?
 CHECK ALL THAT
 pes _____
 NG CONNECTED?
 d Drain / Sump Pumps

 ckups

 ATIVE TO IS
 SIBTANCE?

 OUR THE AERIAL
 ADDITIONAL





Rust stains on Westside Drive

Cottage Street (~15 higher), Stormwater and pipes broken?

Sidewalks not necessarily needed. (7)

3-5" ice due to ponding.

Ponding typical in non drought years

Highwater year round, sumps running constantly/often

Soggy backyards, and stormwater runoff damaging fences

Highwater year round, sumps running constantly/often

Storm Drain clogs and creates ponding

Stormwater Flow

Storm Drain clogs and creates ponding

Blind corner for traffic, SW needed possibly

Stormwater runoff flows to driveway

Wet basement

Storm drain appears broken, causing sinkhole in back yard

Ponding regular, check on 19,21

Sewer services rooted, vc pipes maybe broken, I/I

Stormwater runoff flows to driveway

Legend

Drainage Issues



Recommended Project Components

- Drainage Improvements (~4,500')
- Sump Pump Collectors (~1,400')
- Water Main Replacement (~5,500')
- Roadway Improvements with Pedestrian Safety Considerations (~5,500')

**Lengths are approximate for planning purposes pending final design*

LEGEND:

--- PROPOSED UNDERDRAIN

— PROPOSED DRAIN

- - - PROPOSED SUMP PUMP COLLECTOR

■ PROPOSED DRAIN STRUCTURE

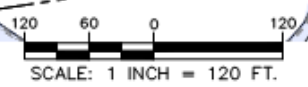
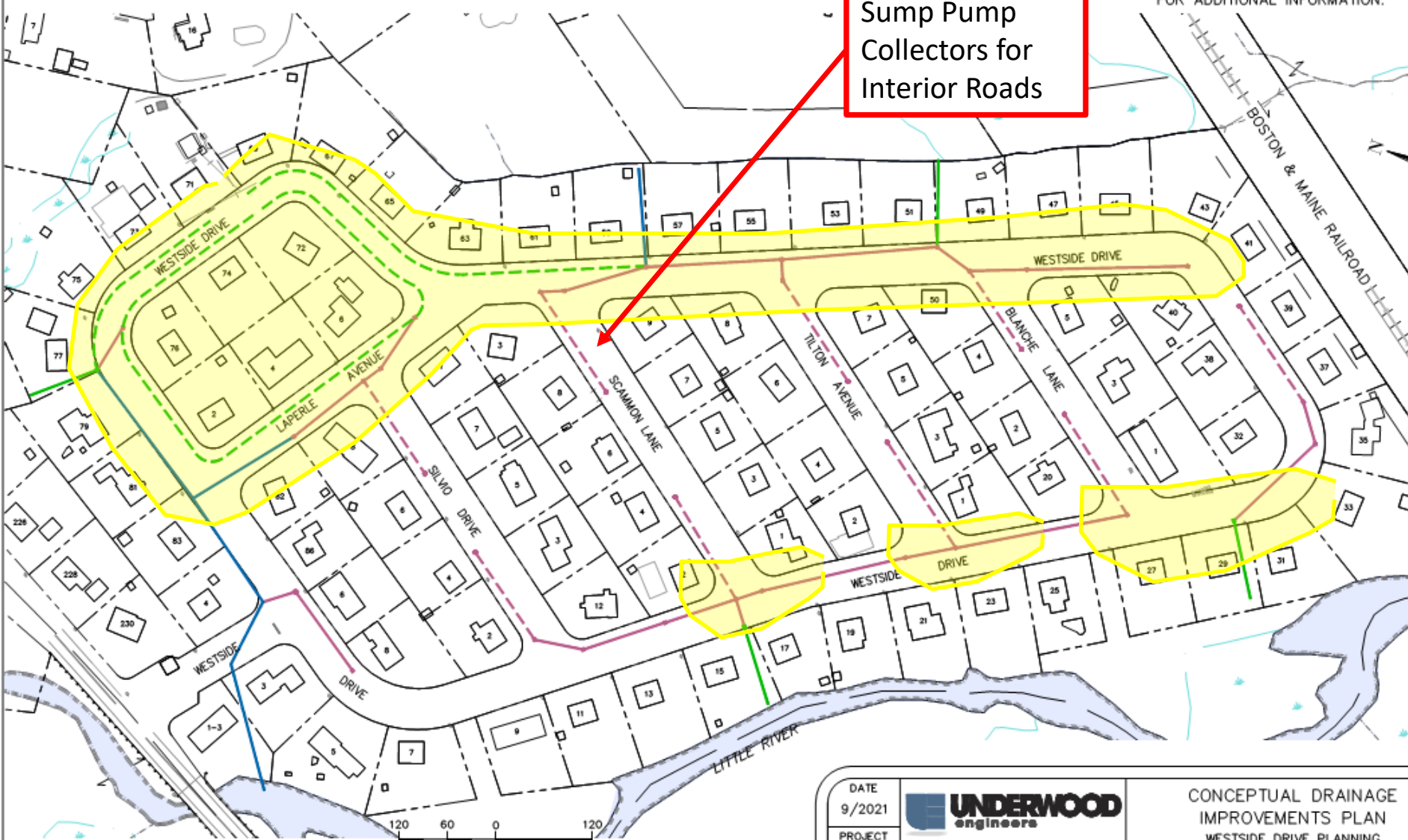
— EXISTING DRAIN TO REMAIN IN USE

— EXISTING DRAIN TO BE REPLACED

NOTES:

1. PROPOSED DRAINS ARE CONCEPTUAL LOCATIONS, SIZES, AND ALIGNMENT. MUST BE REFINED DURING FINAL DESIGN.
2. SEE CONCEPTUAL DRAINAGE PROFILE FOR ADDITIONAL INFORMATION.

Sump Pump Collectors for Interior Roads



DATE
9/2021
PROJECT
2588

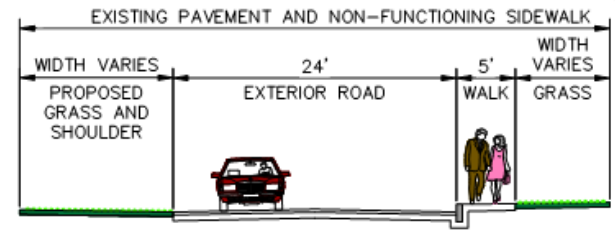
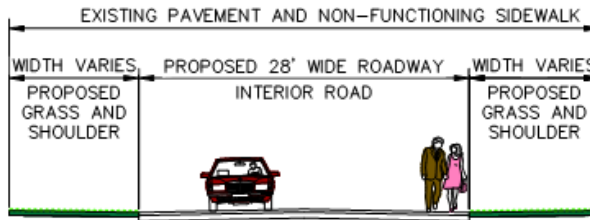


25 Vaughan Mall, Portsmouth, N.H. 03801
Tel. 603-436-6192 Fax. 603-431-4733

CONCEPTUAL DRAINAGE
IMPROVEMENTS PLAN
WESTSIDE DRIVE PLANNING
EXETER, NEW HAMPSHIRE

LEGEND:

- PROPOSED GRASS/GRAVEL SHOULDER
- PROPOSED SIDEWALK
- PROPOSED PAVEMENT/TRAVEL WAY



INTERIOR ROAD SECTION
SCALE: 1"=10'

EXTERIOR ROAD SECTION
SCALE: 1"=10'



DATE 5/2022		CONCEPTUAL ROADWAY PLAN #1	FIG. 3A
PROJECT 2588		(PERIMETER SIDEWALK) WESTSIDE DRIVE PLANNING EXETER, NEW HAMPSHIRE	
25 Vaughan Mall, Portsmouth, N.H. 03801 Tel. 603-436-6192 Fax. 603-431-4733			

Project Planning Budget

– Roadway and Sidewalk Improvements*	\$2,200,000
– I/I and Stormwater Improvements	\$1,500,000
– Municipal Water Improvements	<u>\$2,600,000</u>
TOTAL PROJECT COST	\$6,300,000

*Roadway improvements also required for stormwater management improvements

Next Steps and Schedule

- Final Design and Funding Applications FY 2022
 - 2022 Town Warrant Authorization (\$330,715)
 - ARPA Grant and CWSRF Principal Forgiveness (\$122,365)
 - CWSRF and DWSRF Pre-Applications for Construction

- Town Meeting and Warrant for Construction March 2023

- Possible Construction FY 2023/2024

Ongoing Public Info

- Please go to the Town's website:

<https://www.exeternh.gov/publicworks/westside-drive-area-utility-improvement-project>

Questions

