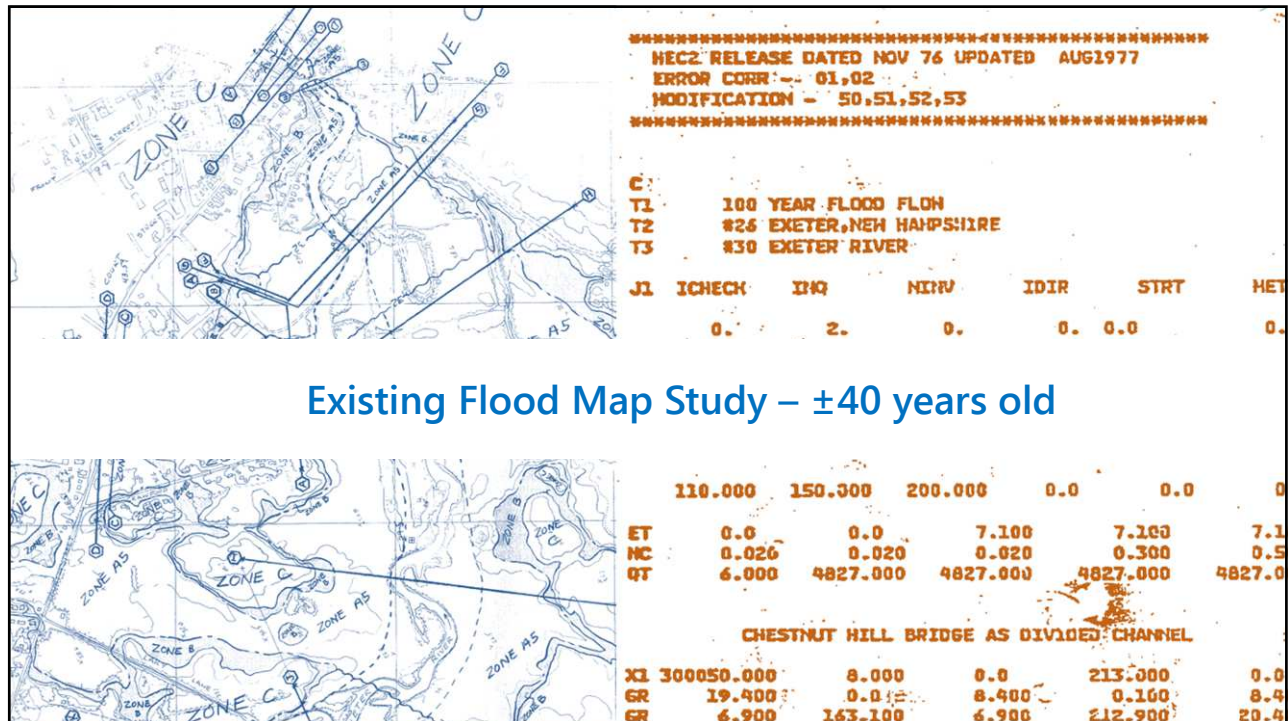
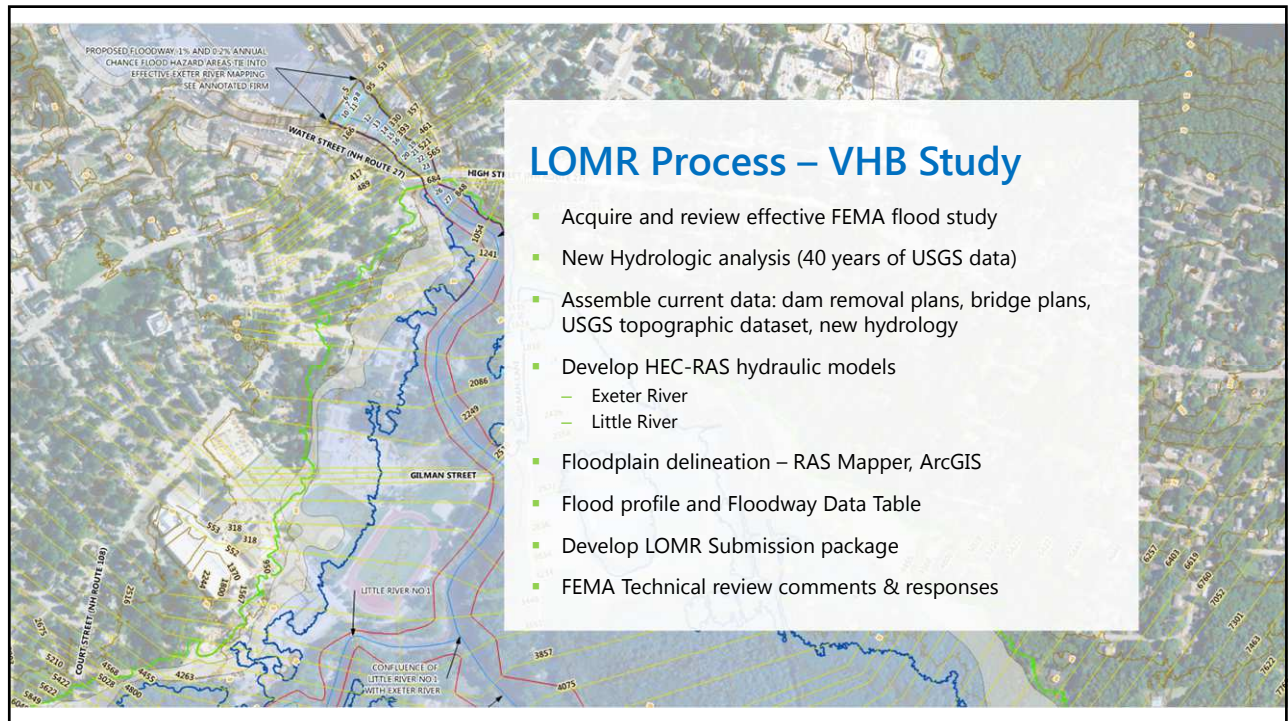
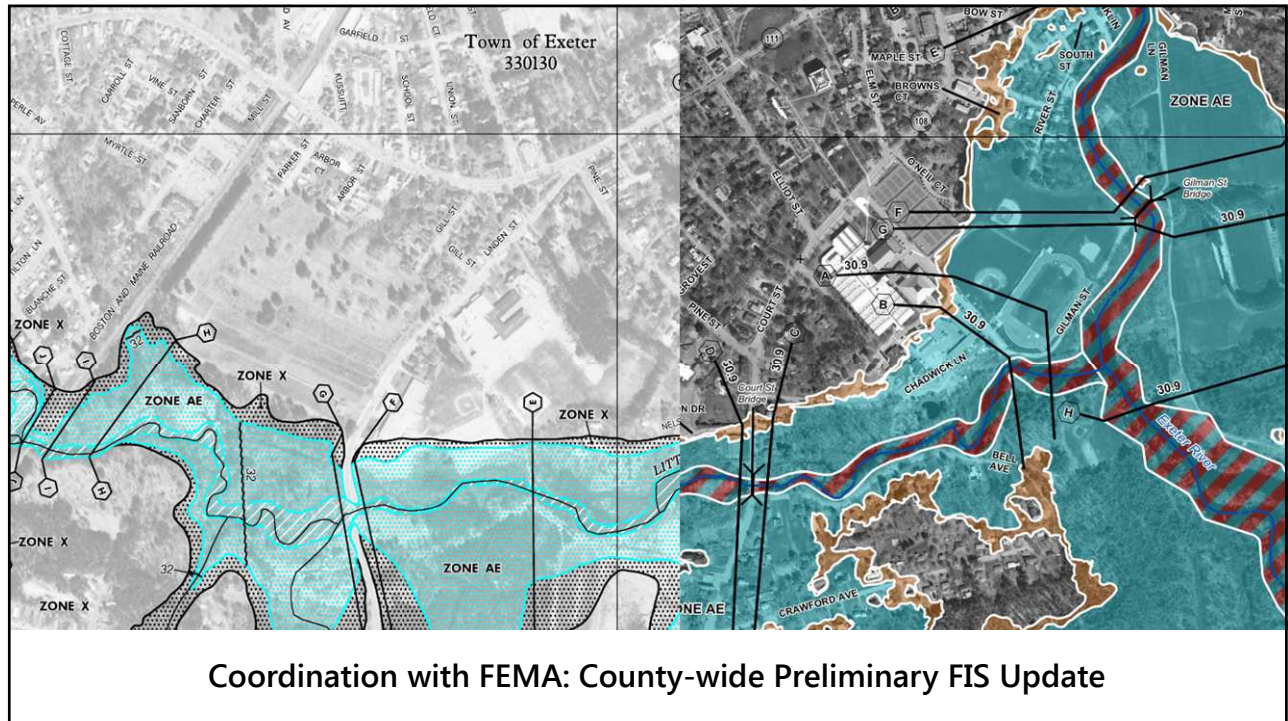


Project Background

- (October 2016) Dam removal construction completed
- NFIP regulations require documenting change in floodplain elevations/extents following dam removal
- Flood map update process: Letter of Map Revision (LOMR)
 - FEMA administers process
 - LOMR amends the official effective NFIP flood maps that delineate flood zones
 - Flood zones determine who is required to purchase flood insurance
 - Flood map change reflects dam removal, but also improved topographic data (LiDAR) and hydrologic data (USGS river gage data)
 - (Concurrent with the LOMR process): Preliminary FIS County-wide flood mapping update
 - VHB has been coordinating with FEMA to integrate this LOMR with Preliminary FIS





Letter of Map Revision (LOMR) Timeline

- (Spring-Fall 2017) VHB prepares hydraulic analysis and mapping for draft filing, coordinates with Town Engineer on revisions prior to for filing to FEMA
- (October 2017) – LOMR filing
- (December 2017) – technical comments from FEMA, VHB response to comments
- (February 9, 2018) – FEMA technical review complete, public notifications required (90-day deadline) **← YOU ARE HERE**
- (May 9, 2018) – Deadline for public notifications
- (Summer 2018) – FEMA issues LOMR
- (Fall 2018) – LOMR becomes effective after 90-day appeal period

Next Steps

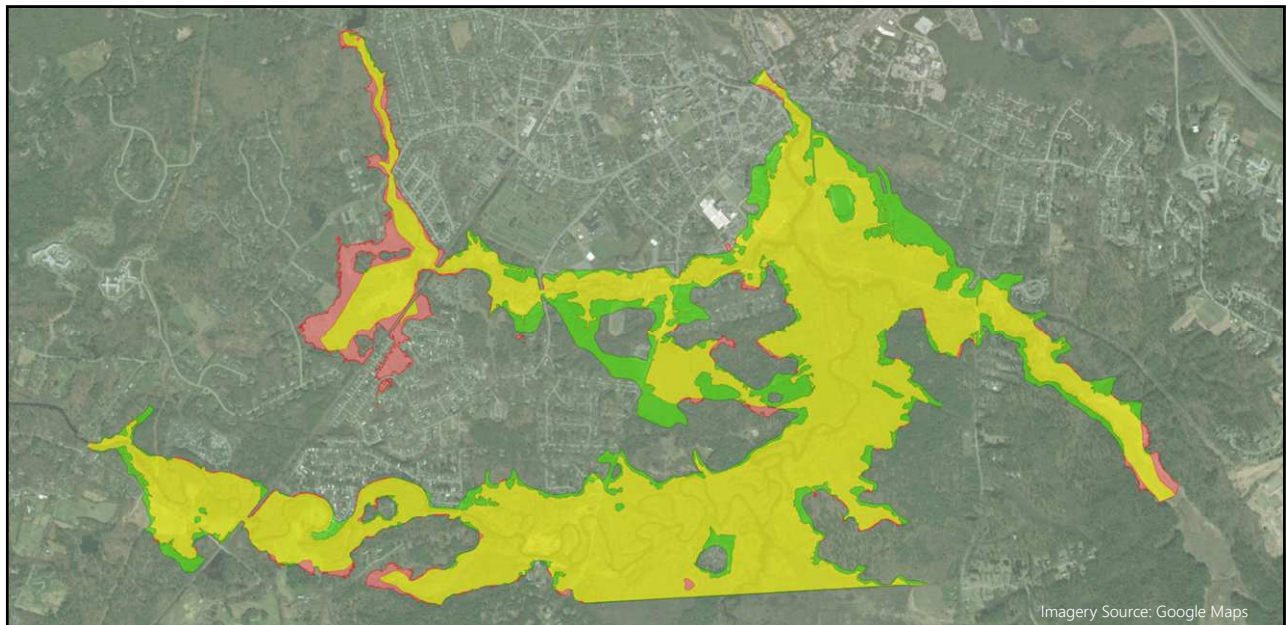
- Send notification letters to property owners (May 9, 2018 deadline)
- Additional public education of map change?
 - Not required by FEMA
 - At Town's discretion
- Following receipt of notification letters, FEMA will issue LOMR in 1-2 months
- LOMR becomes effective after 90-day appeal period
- When the countywide Preliminary FIS map revision is completed, it will incorporate the revised mapping from the LOMR.

Public Education – FEMA Flood Map Revisions

- Introduction: Why are flood maps changing?
 - Dam removal
 - Replacing outdated data
- Maps showing differences between Effective/Preliminary/LOMR
 - Overlay flood zones vs. tax parcels, buildings
- Explanation of FEMA terms
 - (SFHA, BFE, Zone AE, Zone X, Floodway, etc.)
- Discussion of flood risk assessment (1% vs 100-year storm)
- Explanation of flood insurance requirements
 - Who must purchase flood insurance
 - LOMA process for buildings above BFE but located in floodplain



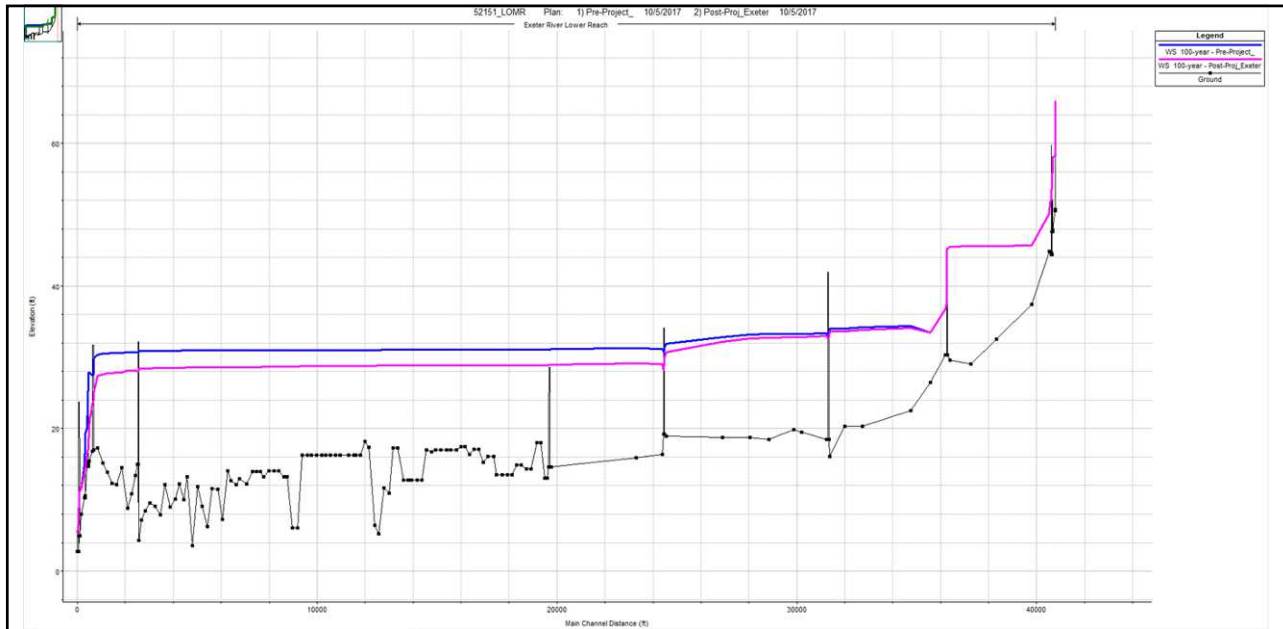
Image Source: FEMA



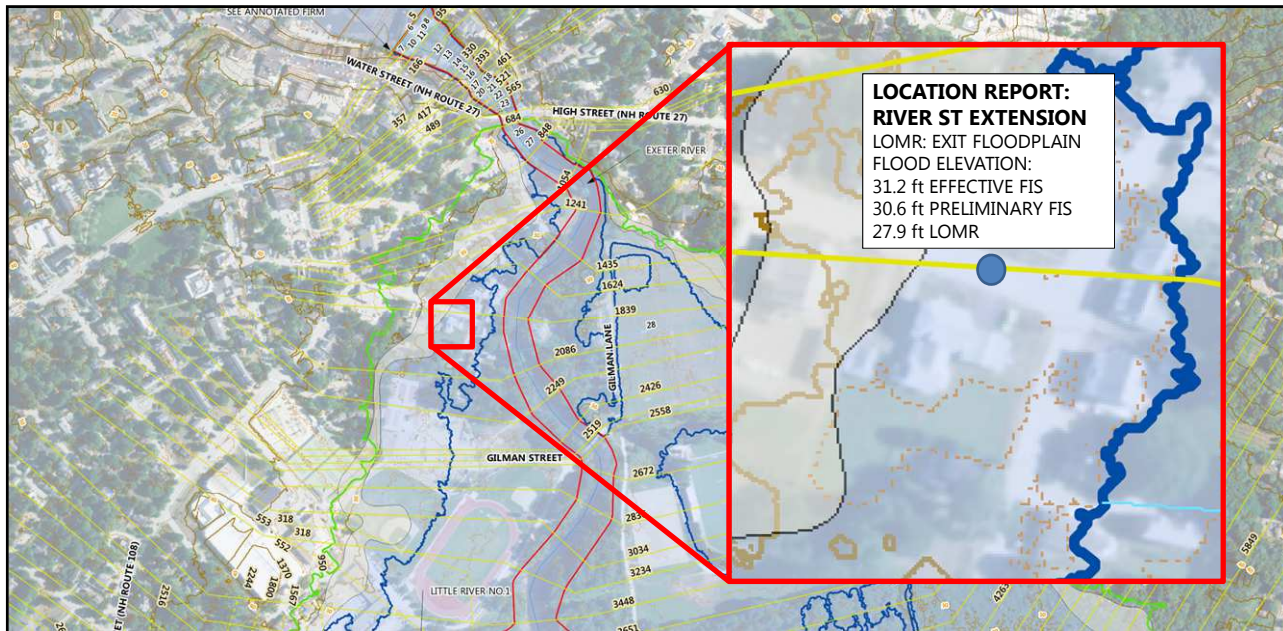
Imagery Source: Google Maps

Great Dam Removal LOMR: Overview of Flood Map Changes

Exeter River | Exeter, New Hampshire



Great Dam Removal LOMR: Overview of Flood Profile Changes
Exeter River | Exeter, New Hampshire



Great Dam Removal LOMR: Public Education using GIS
Exeter River | Exeter, New Hampshire

Jake San Antonio, PE | jsanantonio@vhb.com | 617.607.2710

Dave Cloutier, PE | dcloutier@vhb.com | 207.536.2582

www.vhb.com



Stay Connected



Facebook

www.facebook.com/VHBNow



Twitter

www.twitter.com/VHBnow



LinkedIn

www.linkedin.com/company/vhb



Instagram

www.instagram.com/vhbnow

